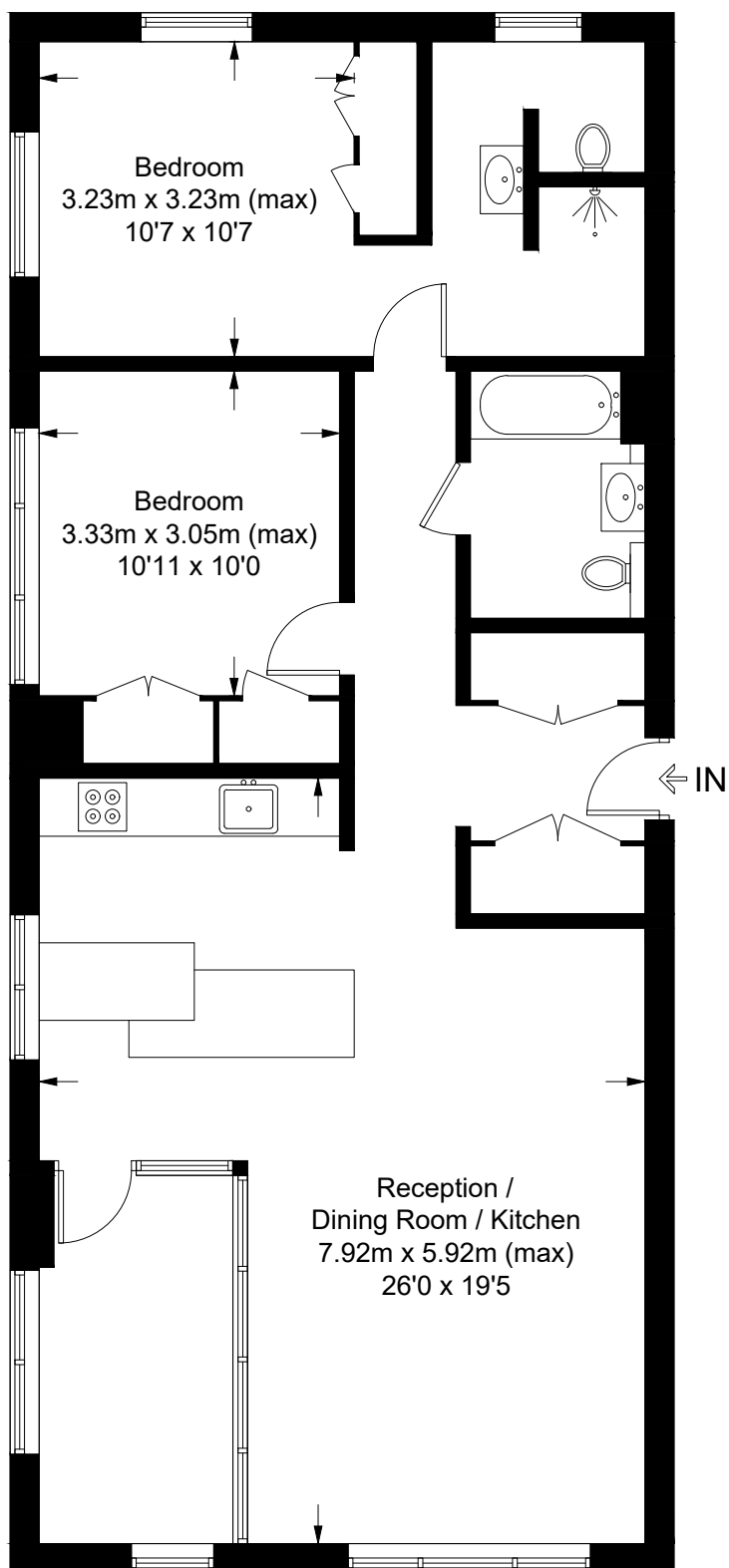


# Douglas Tower, E14

Approximate Gross Internal Area = 97 sq m / 1044 sq ft



## Twenty Third Floor

This floor plan is for representation purposes only and is not drawn to scale.

**The Gross Internal Area includes outbuildings shown on the plan.**

Whilst every attempt has been made to ensure the accuracy of the plan measurements of doors, windows and rooms are approximate only and should be checked before making any decisions reliant upon them.

Copyright Bespokeplans.co.uk (ID902860)