

0247 401 2020 | enquiries@globalhousestates.com

ASHBURNHAM ROAD,, CHELSEA, LONDON

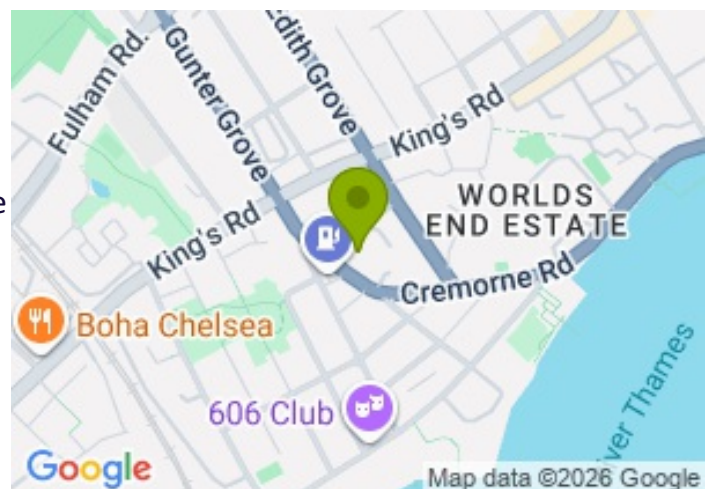
£899,000.00



FOR SALE



- Share of freehold
- Four-bedroom apartment
- Private balcony
- Off-street parking and a dedicated motorbike bay
- Chain free
- Excellent amenities and transport links
- Lift access
- High Ceilings and parquet wood flooring



Property Description

This impressive four-bedroom apartment is set within the highly sought-after Ashburnham Mansions, an elegant red-brick Victorian development in the heart of Chelsea. Extending to approximately 1,300 sq. ft., this beautiful home combines generous living space with a prime location, moments from Fulham Broadway and the River Thames.

Located on the second floor, the apartment opens into a long hallway that thoughtfully separates the layout. The large reception room offers a great space for both everyday living and entertaining, enhanced by sash windows that flood the room with natural light and direct access to a private balcony. The separate kitchen is fitted with ample storage and preparation space alongside a breakfast bar.

The property comprises four well-proportioned double bedrooms. The principal bedroom benefits from an en-suite, whilst the other bedrooms are fitted with built-in wardrobe space. The fourth bedroom has direct access to the private balcony, creating a peaceful retreat within the home.

A generous family bathroom made out of marble, and a separate WC serve the remaining bedrooms, ensuring convenience for residents. High ceilings create a sense of space throughout the apartment.

Residents can enjoy secure off-street parking, a covered bicycle rack and a dedicated motorbike bay. The apartment is ideally positioned with easy access to the boutiques, cafés and restaurants on King's Road, as well as picturesque riverside walks along the Thames.

Excellent transport connections are available nearby, with Fulham Broadway Underground Station providing convenient access to Central London and beyond, alongside numerous bus routes serving the surrounding areas.

The property is offered with a share of freehold and vacant possession. Contact Global House Estates for further information.

Service charge: circa £7728 per year

Length of lease: approx. 858 years remaining

All data and information set forth on this website regarding real property, for sale, purchase, rental and/or financing, are from sources regarded as reliable. No warranties are made as to the accuracy of any descriptions and/or other details and such information is subject to errors, omissions, changes of price, tenancies, commissions, prior sales, leases or financing, or withdrawal without notice. Square footages are approximate and may be verified by consulting a professional architect or engineer.

Viewing

Please contact our Global House Estates Ltd Office on 0207 401 2020 if you wish to arrange a viewing appointment for this property or require further information.

Disclaimer

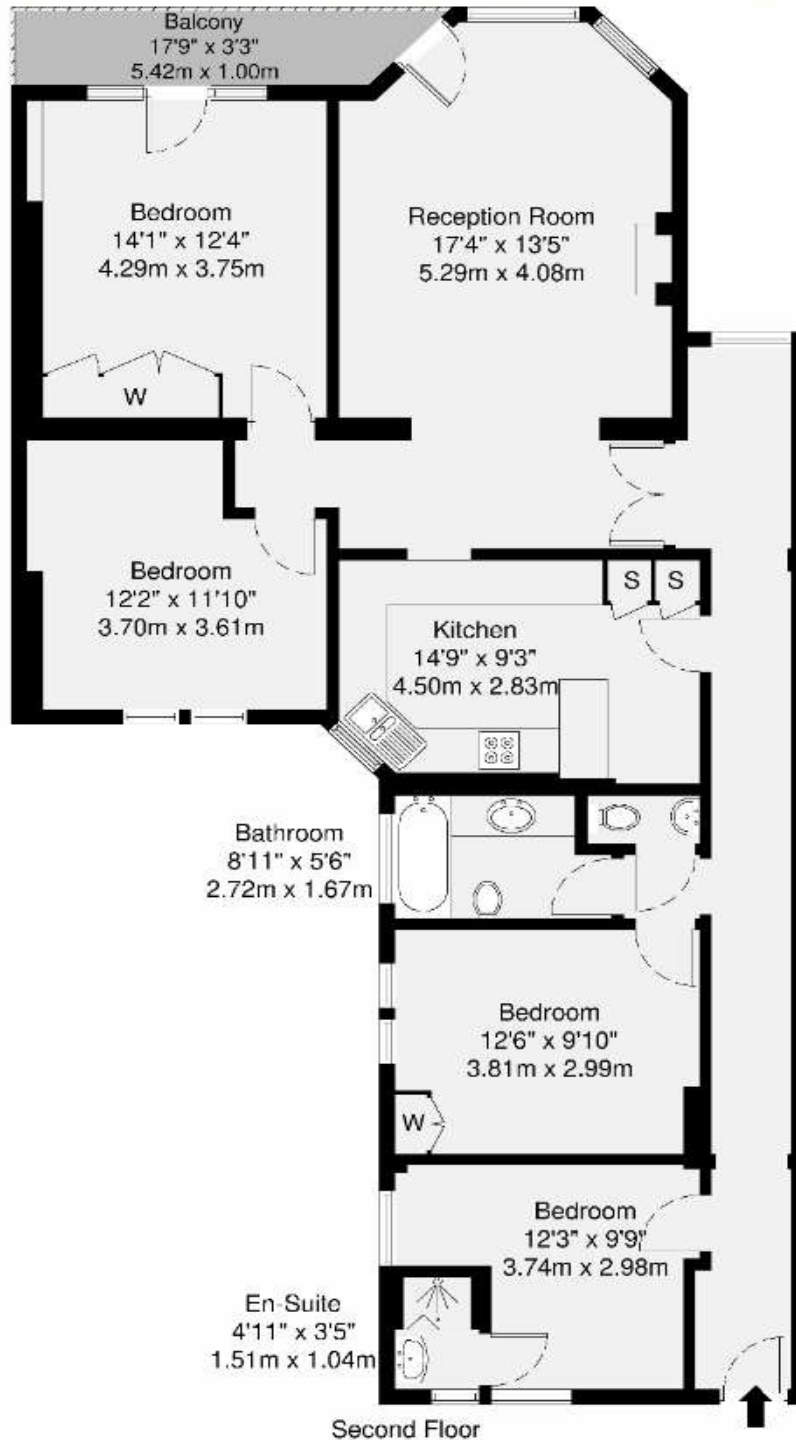
This website provides information about buying, selling, renting UK property. The information is from reliable sources, but we can't guarantee that it's always accurate. There may be mistakes or changes in the information, such as price, availability, leases, or financing. The square footage is also an estimate and should be confirmed by a professional architect or engineer.

Floor plan



Ashburnham Mansions, SW10

GROSS INTERNAL AREA
121 sq m / 1302 sq ft



GROSS INTERNAL AREA (GIA)
The interior of the property
121 sq m / 1302 sq ft

TOTAL STORAGE SPACE
Storage and wardrobe total area
2.1 sq m / 22 sq ft

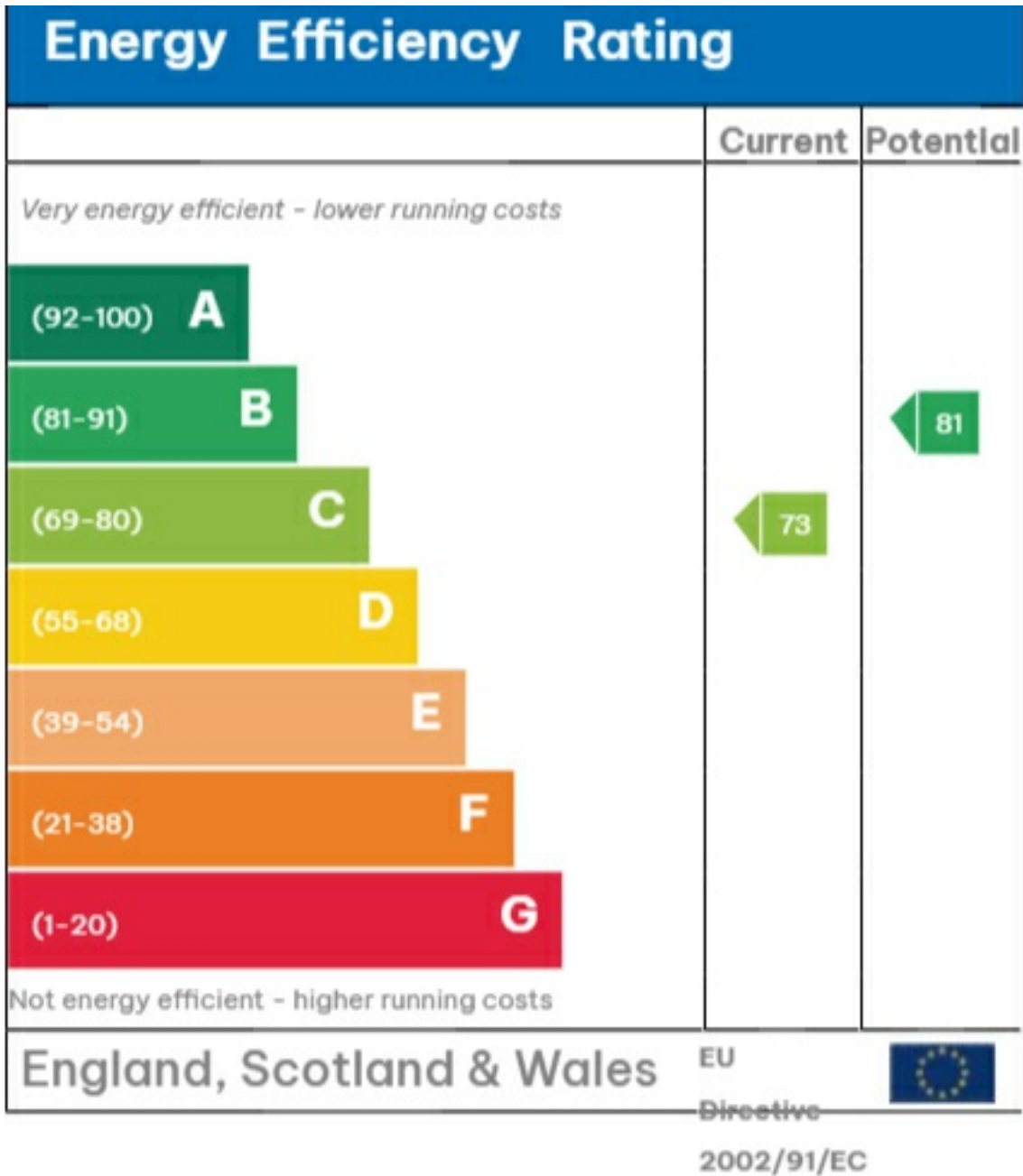
EXTERNAL FEATURES
Garden, Balcony, Terrace, Verandah etc.
4.9 sq m / 53 sq ft

RESTRICTED HEAD HEIGHT
Limited use area under 1.5m
0.0 sq m / 0.0 sq ft

Disclaimer : Floorplan measurements are approximate and are for illustrative purposes only. While we do not count the floorplan accuracy and completeness, you or your advisors should conduct a careful, independent investigation of the property in respect of monetary valuation.

Maison
VUE

EPC









35a St Georges Road, London,
SE1 6EW
+44 (0) 207 401 2020

<https://globalhousestates.com>

Level 24, Lee Garden One,
33 Hysan Ave, Causeway Bay,
Hong Kong
+852 3963 8411