

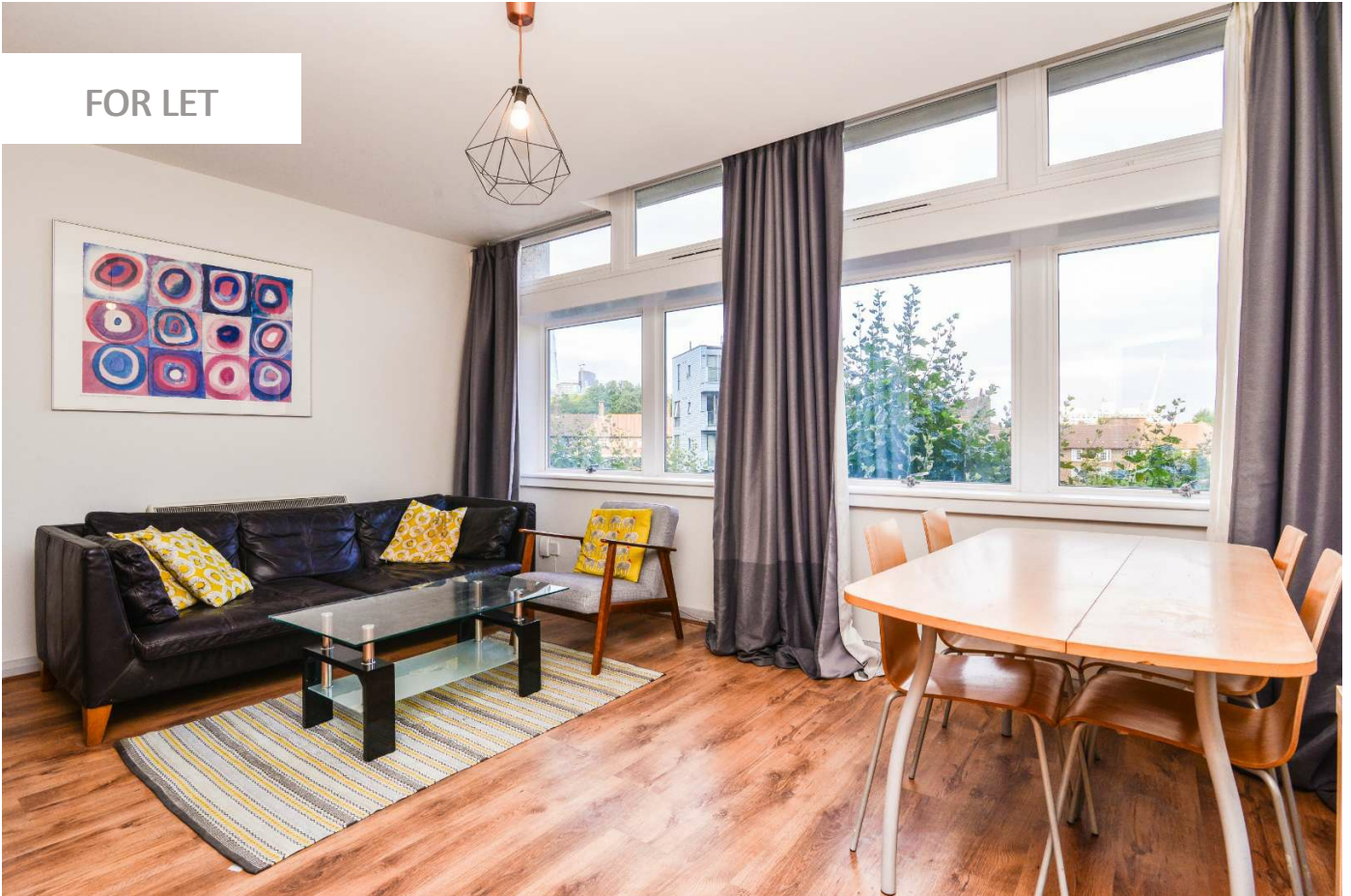
0247 401 2020 | enquiries@globalhousestates.com

119 NEWINGTON CAUSEWAY, ELEPHANT AND CASTLE, LONDON

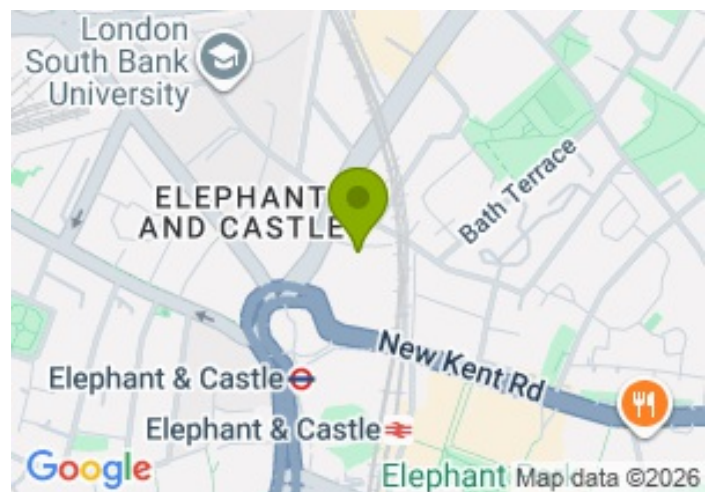
£2,600.00



FOR LET



- Two double bedrooms
- 2 Baths
- Gym, Pool, Concierge, Parking
- Double Glazing
- Furnished, Available now



Property Description

A very spacious two bed room apartment available now outside Elephant and Castle underground station .

This apartment benefits from two double bed rooms, newly modernised ensuite, a family bathroom, storage room, open plan kitchen reception, new double glazed windows

Property comes fully furnished.

Resident will enjoy use of Gym, Pool, 24 hr Concierge service, Off road underground gated parking.

Location is phenomenal, Elephant and Castle has access to 2 underground lines, an overground direct to Kings Cross St Pancras.

Close proximity to numerous universities near by.

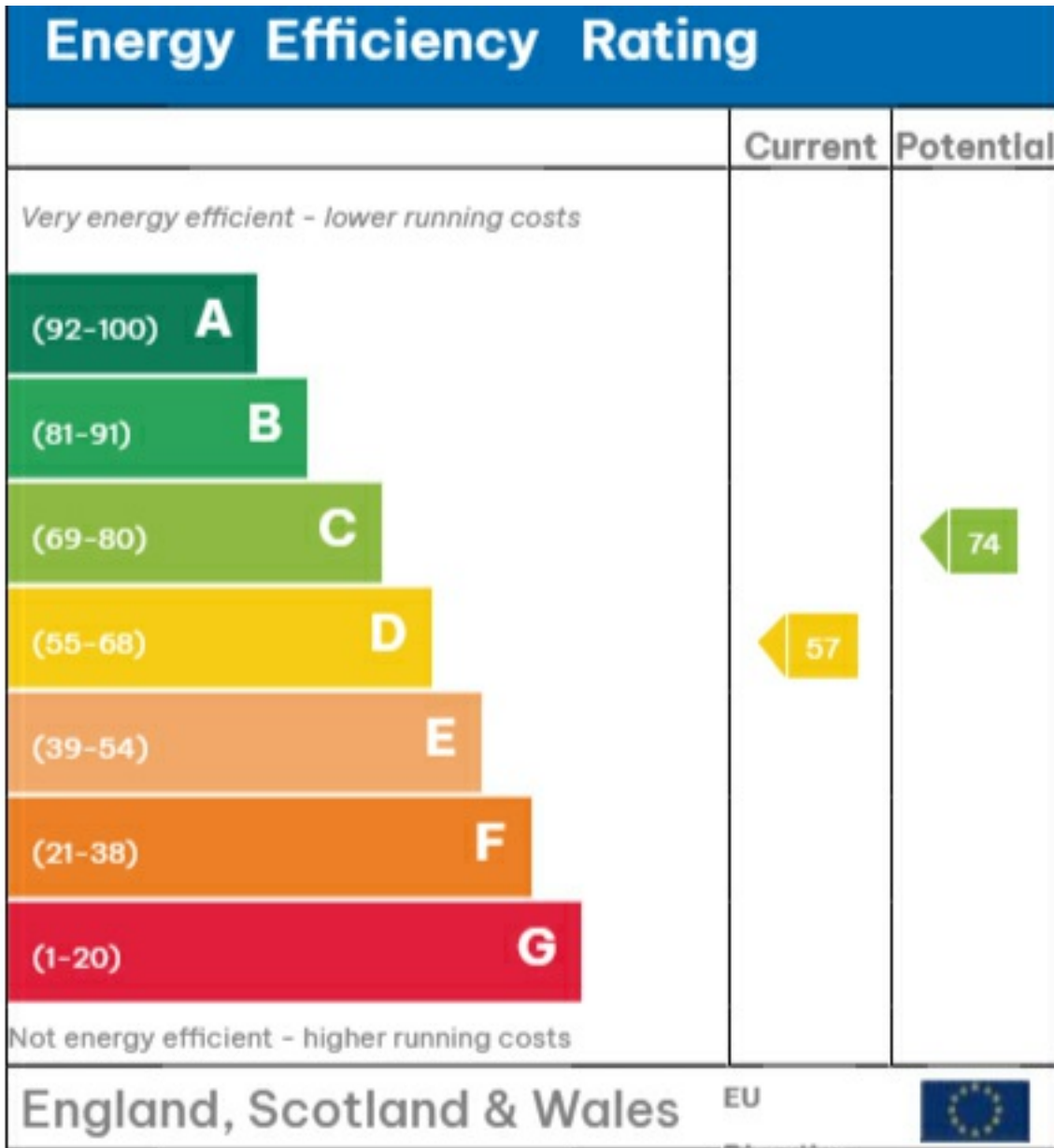
Viewing

Please contact our Global House Estates Ltd Office on 0207 401 2020 if you wish to arrange a viewing appointment for this property or require further information.

Disclaimer

This website provides information about buying, selling, renting UK property. The information is from reliable sources, but we can't guarantee that it's always accurate. There may be mistakes or changes in the information, such as price, availability, leases, or financing. The square footage is also an estimate and should be confirmed by a professional architect or engineer.

EPC



Directive

2002/91/EC





35a St Georges Road, London,
SE1 6EW
+44 (0) 207 401 2020

<https://globalhousestates.com>

Level 24, Lee Garden One,
33 Hysan Ave, Causeway Bay,
Hong Kong
+852 3963 8411