

0247 401 2020 | enquiries@globalhousestates.com

## MITCHAM LANE, STREATHAM, LONDON

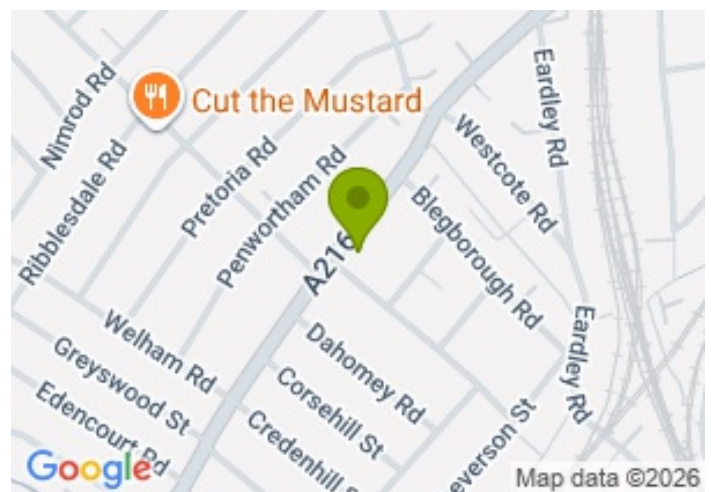
£1,550.00



FOR LET



- One Bedroom Apartment
- Wooden Floor
- Open Plan Kitchen
- Juliet Balcony
- Modern Bathroom
- Short Walk To Streatham Common Station
- Unfurnished



## Property Description

Stylishly decorated one bedroom apartment just a short walk to Streatham Common Station. Offering generous living space and modern open plan kitchen, benefiting from a light and contemporary interior. The property comprises of; spacious bathroom tiled throughout and with wooden floors and access to Juliet balcony, Large bedroom with beautiful skylights windows.

The property is in a great location if you are travelling into The City due to its close proximity to Streatham, Streatham Common Rail & Tooting Stations. In addition to the excellent transport links, the property is situated close to a wide array of popular, convenient local amenities and both Streatham and Tooting Common.

## Viewing

Please contact our Global House Estates Ltd Office on 0207 401 2020 if you wish to arrange a viewing appointment for this property or require further information.

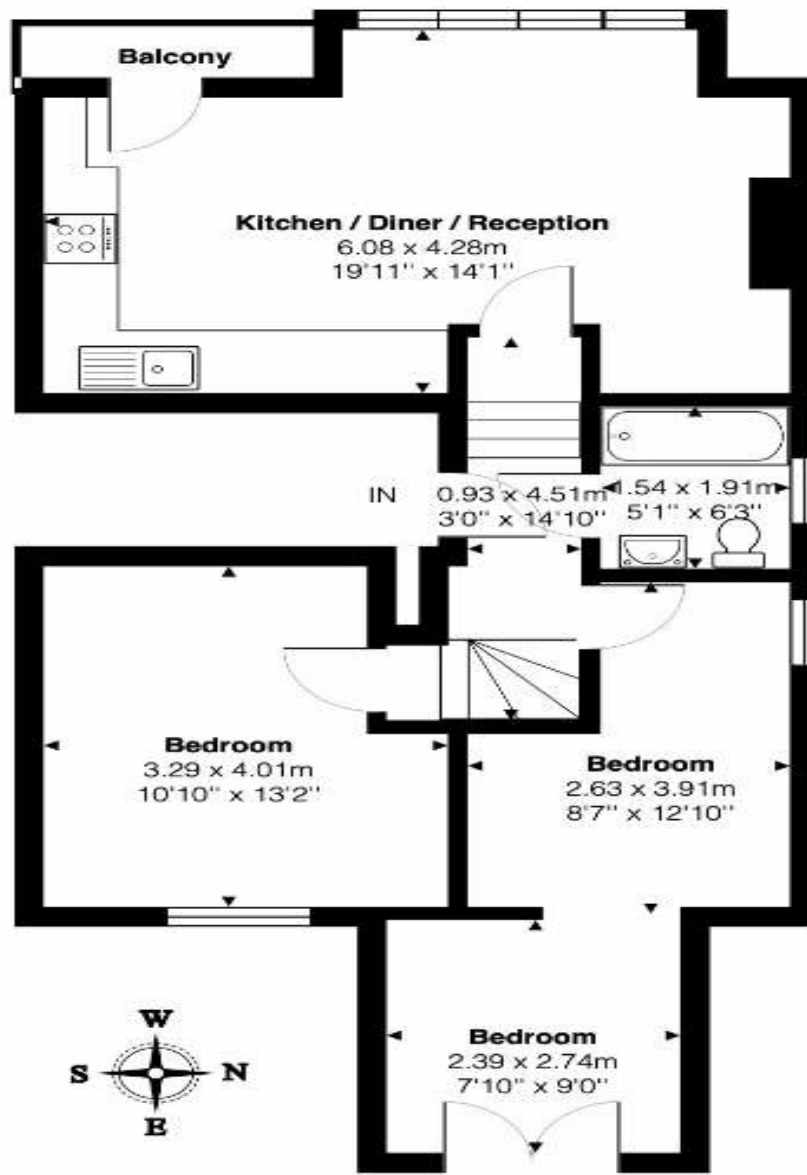
## Disclaimer

This website provides information about buying, selling, renting UK property. The information is from reliable sources, but we can't guarantee that it's always accurate. There may be mistakes or changes in the information, such as price, availability, leases, or financing. The square footage is also an estimate and should be confirmed by a professional architect or engineer.

# Floor plan

## 167B Mitcham Lane, SE16

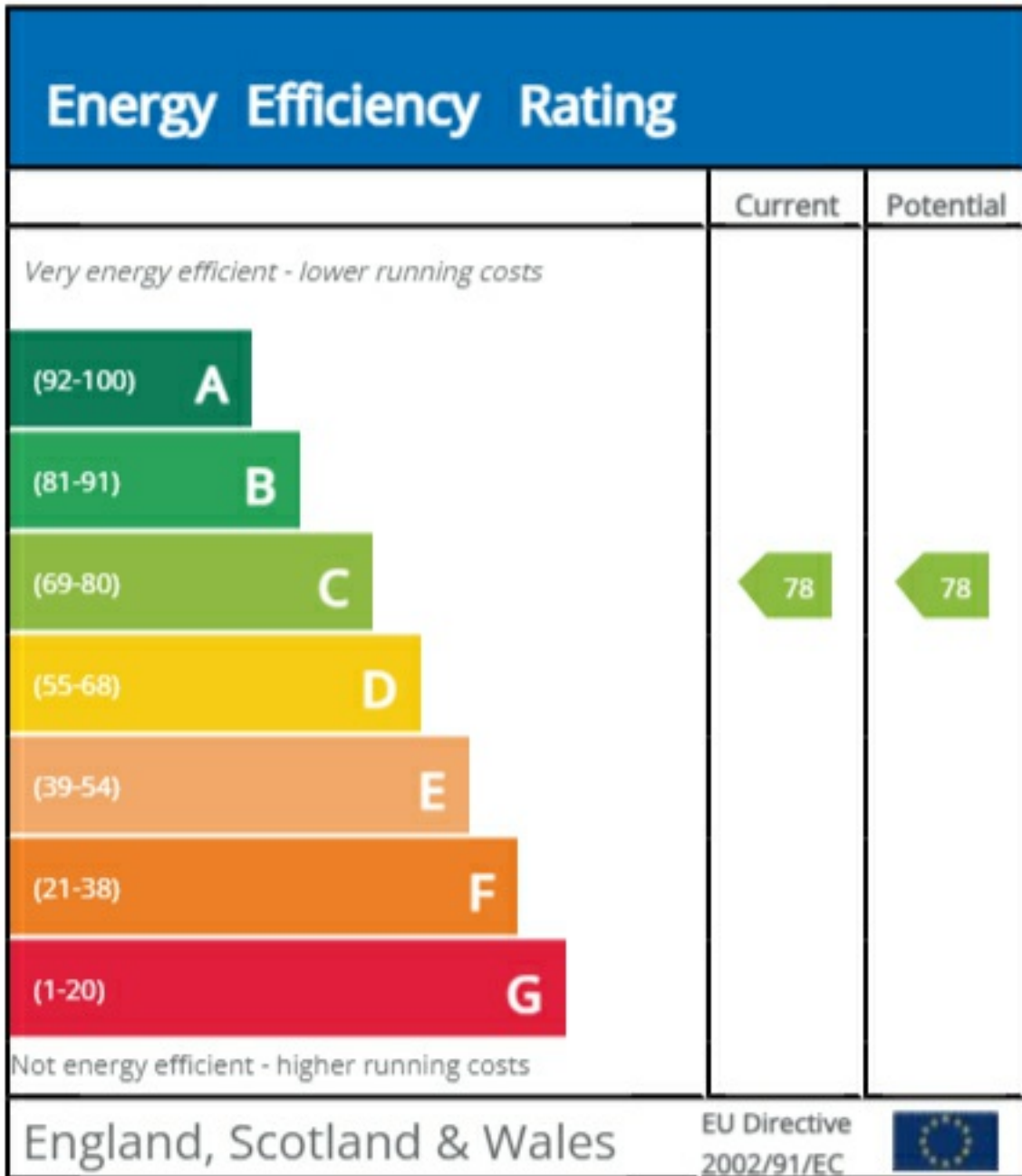
Total Area: 59.6 m<sup>2</sup> ... 642 ft<sup>2</sup> (excluding balcony)

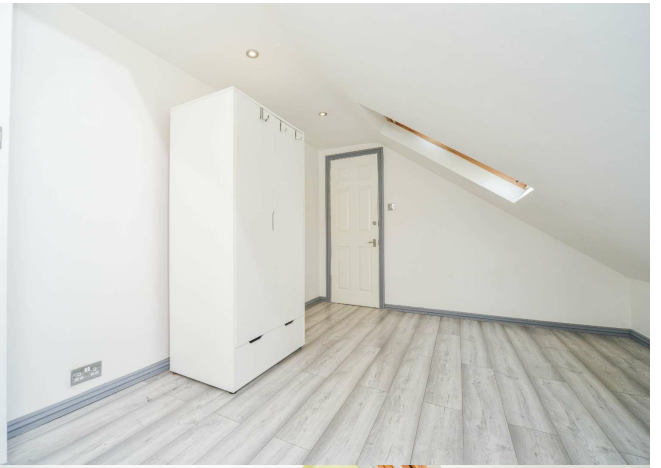


First Floor

This Floorplan is provided without warranty, of any kind.  
Bespoke Plans disclaims any warranty including,  
without limitation, satisfaction, quality or accuracy of any dimensions

# EPC







35a St Georges Road, London,  
SE1 6EW  
+44 (0) 207 401 2020

<https://globalhouseestates.com>

Level 24, Lee Garden One,  
33 Hysan Ave, Causeway Bay,  
Hong Kong  
+852 3963 8411