

0247 401 2020 | enquiries@globalhousestates.com

ONE PARK AVENUE, SALE, MANCHESTER

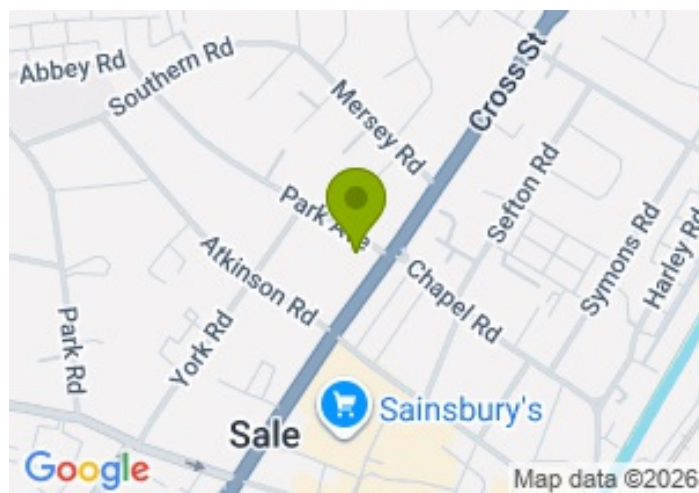
£1,450.00



FOR LET



- two bedroom apartment / fully furnished
- available mid-Aug26
- one secure allocated parking space
- bluetooth internal speakers & underfloor heating
- 5 mins walk to Sale Town Centre
- 8 mins walk to Sale Metrolink Station



Property Description

GHE is delighted to have been instructed To Let this two-double bedroom, fully furnished apartment with a secured parking, in the south Manchester suburb of Sale.

The apartment is situated in one of south Manchester's most thriving neighbourhoods, populated with good quality schools, leisure facilities, supermarkets, shops, cafes and the outstanding Sale Water Park on its doorstep.

The property comprises of open plan living and dining areas. The kitchen is fully integrated with dishwasher, fridge freezer, oven, hob and extractor.

The apartment is what millennials would call a 'dumbbells' style apartment, with the living and dining space in the middle, with a bedroom to each side. Both bedrooms are very generously sized, fully furnished with double/single bed, wardrobes, chest of drawers and bedside tables.

The master also benefits from an en-suite with shower, WC and wash hand basin. The main bathroom benefits from a bath/shower and alongside matching appliances. Both are supplemented by a heated tiled floor. There is also a separate utility cupboard which houses the washing machine.

The location is outstanding, with Metrolink just an 8 minute walk away, Manchester Airport a 10-15 minute drive and the wider motorway network just 1 mile away.

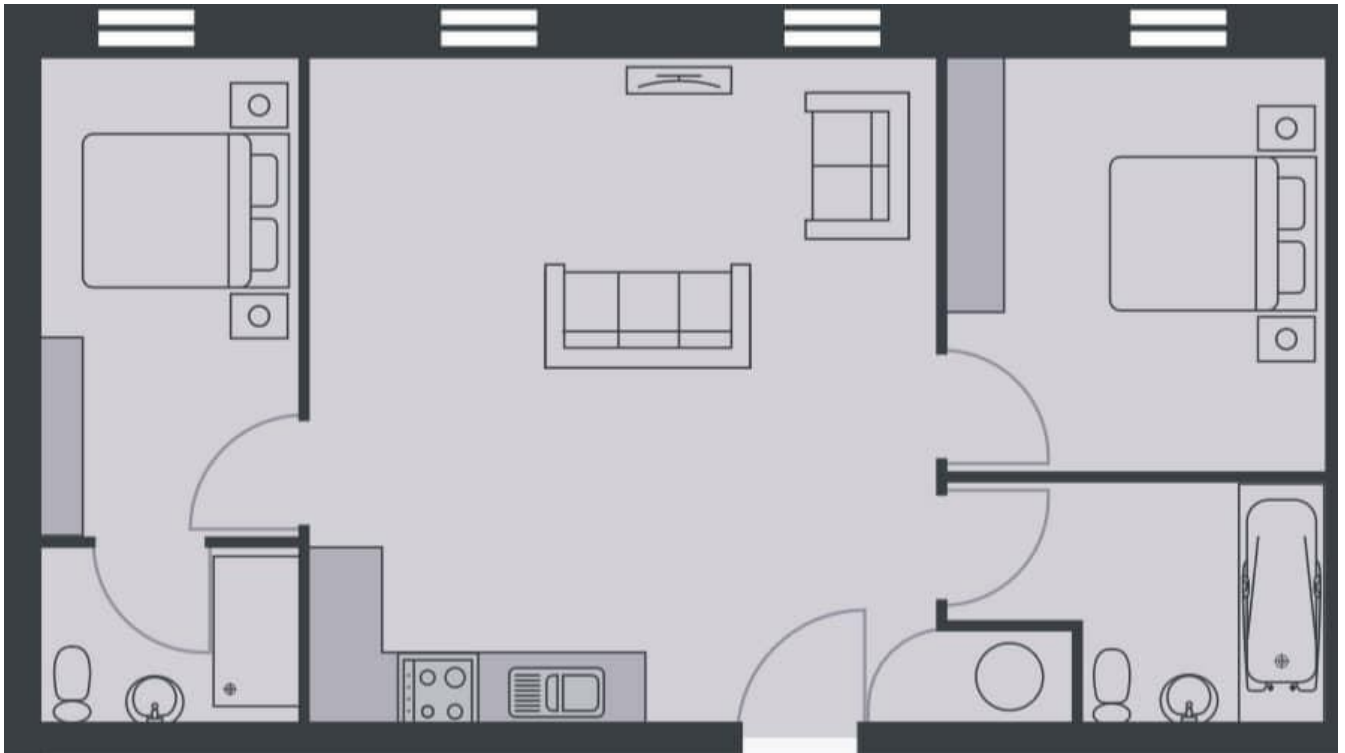
Viewing

Please contact our Global House Estates Ltd Office on 0207 401 2020 if you wish to arrange a viewing appointment for this property or require further information.

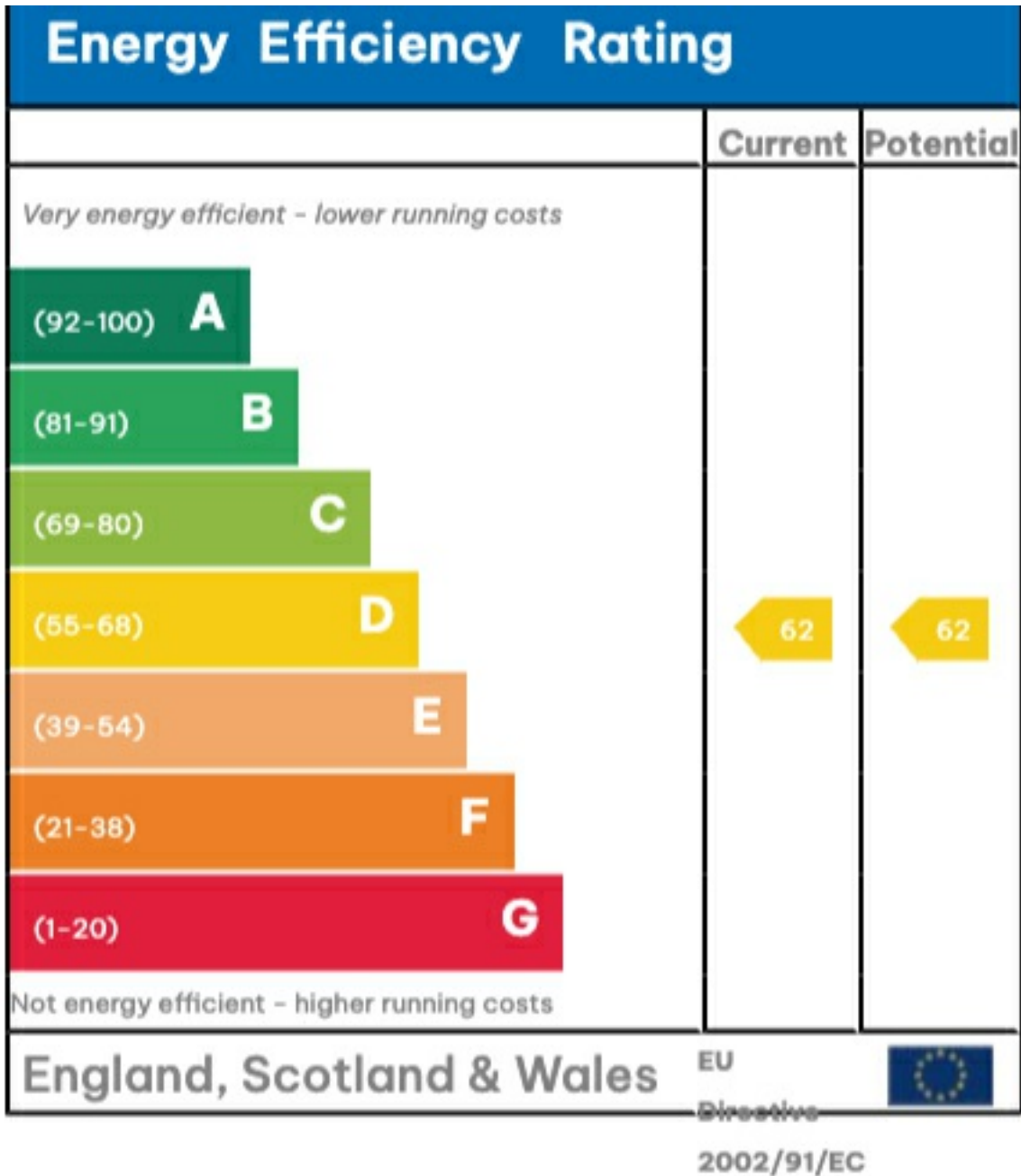
Disclaimer

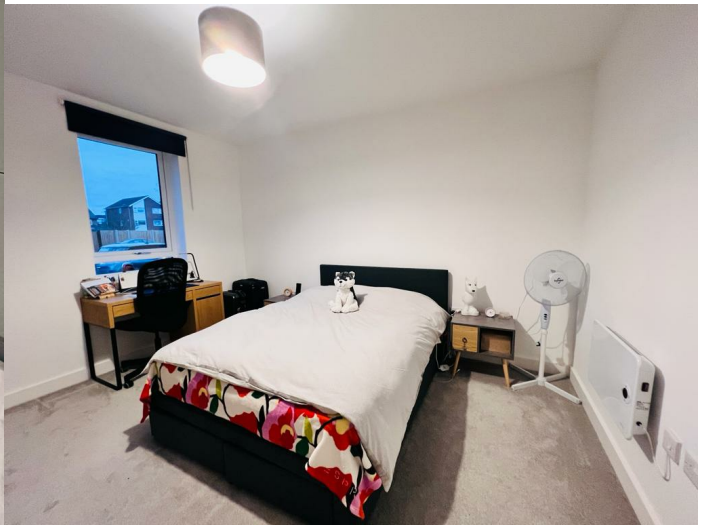
This website provides information about buying, selling, renting UK property. The information is from reliable sources, but we can't guarantee that it's always accurate. There may be mistakes or changes in the information, such as price, availability, leases, or financing. The square footage is also an estimate and should be confirmed by a professional architect or engineer.

Floor plan

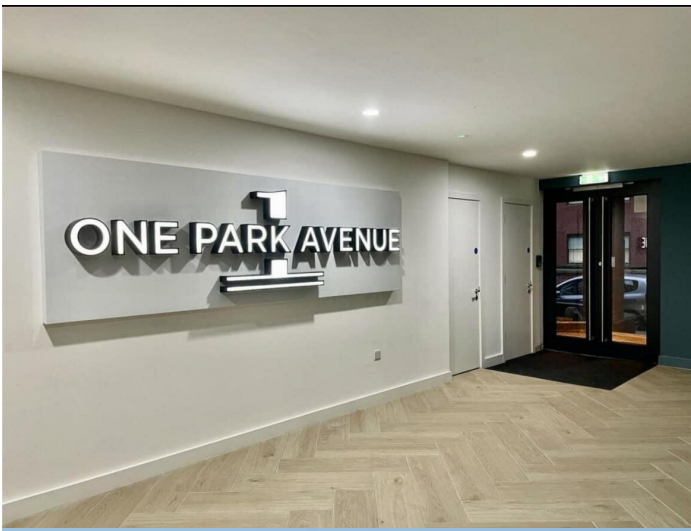


EPC









35a St Georges Road, London,
SE1 6EW
+44 (0) 207 401 2020

<https://globalhouseestates.com>

Level 24, Lee Garden One,
33 Hysan Ave, Causeway Bay,
Hong Kong
+852 3963 8411