

0247 401 2020 | enquiries@globalhousestates.com

## FORT ROAD, BERMONDSEY, LONDON

£885,000.00

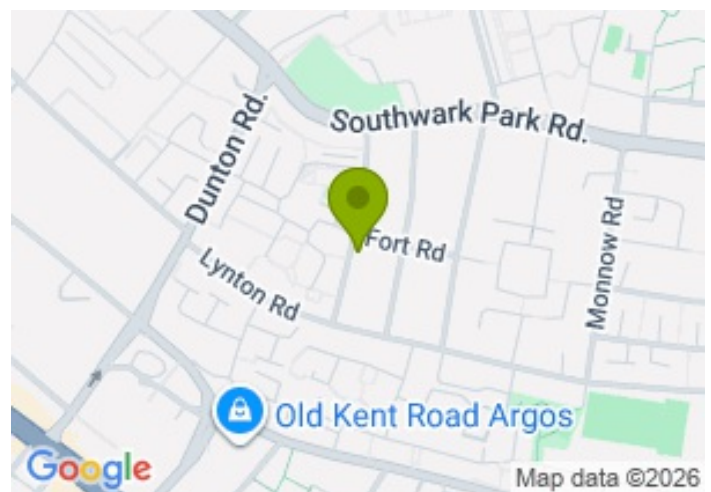


FOR SALE



ghe GLOBAL HOUSE ESTATES

- Freehold property
- Three-bedroom house
- Modern interior
- Spacious open-plan living area
- Approximately 1,170 sq. ft.
- Sought after and quiet area
- Excellent transport links
- Chain free



## Property Description

We are excited to present this freehold opportunity on Fort Road, set in the sought-after residential area of Bermondsey. This spacious three-bedroom home offers approximately 1,170 sq. ft. of thoughtfully designed living space arranged over three floors.

Upon entering the house, you are welcomed by a generous entrance hallway, complete with a useful built-in storage cupboard. The ground floor accommodates the very spacious master bedroom, which benefits from fitted wardrobes and a contemporary en-suite bathroom.

The property boasts a bright and large reception room and open-plan kitchen with integrated appliances on the first floor, creating the perfect setting for both everyday living and entertaining. Large double-glazed windows allow an abundance of natural light to flood the space.

On the top floor, there are two well-proportioned double bedrooms, both completed with a built-in wardrobe space. A modern three-piece bathroom and a separate WC serve the rest of the home.

Residents are within easy reach of the vibrant amenities of Bermondsey Street, Borough, and London Bridge and are renowned for their mix of independent cafes, restaurants, boutique shops and popular local attractions.

Excellent transport connections are within easy reach, with Bermondsey, London Bridge and Borough stations providing convenient access across the City and beyond.

The property will be offered with vacant possession. Please contact Global House Estates for more details.

All data and information set forth on this website regarding real property, for sale, purchase, rental and/or financing, are from sources regarded as reliable. No warranties are made as to the accuracy of any descriptions and/or other details and such information is subject to errors, omissions, changes of price, tenancies, commissions, prior sales, leases or financing, or withdrawal without notice. Square footages are approximate and may be verified by consulting a professional architect or engineer.

## Viewing

Please contact our Global House Estates Ltd Office on 0207 401 2020 if you wish to arrange a viewing appointment for this property or require further information.

## Disclaimer

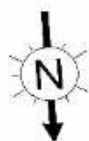
This website provides information about buying, selling, renting UK property. The information is from reliable sources, but we can't guarantee that it's always accurate. There may be mistakes or changes in the information, such as price, availability, leases, or financing. The square footage is also an estimate and should be confirmed by a professional architect or engineer.

# Floor plan

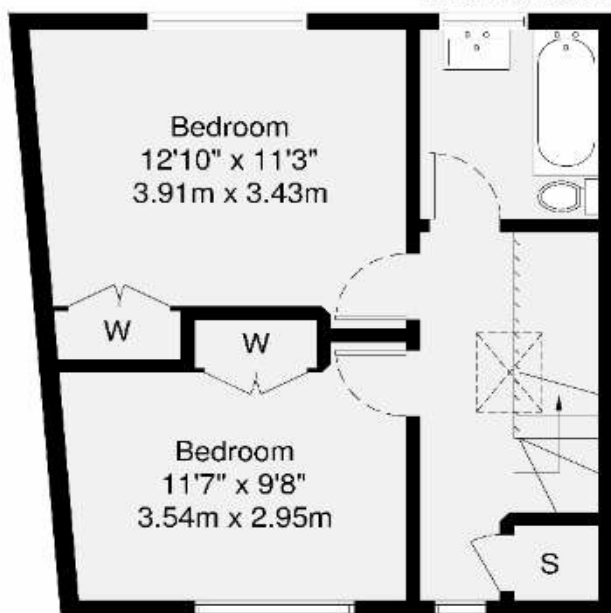


Fort Road, SE1

GROSS INTERNAL AREA  
108.5 sq m / 1168 sq ft

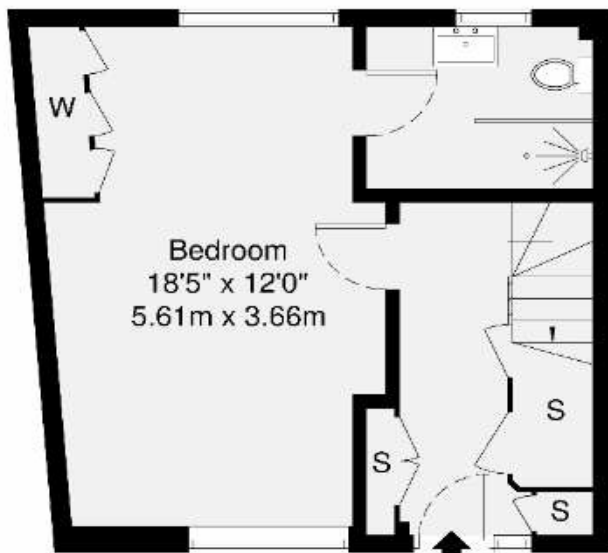


Bathroom  
7'1" x 5'11"  
2.15m x 1.80m

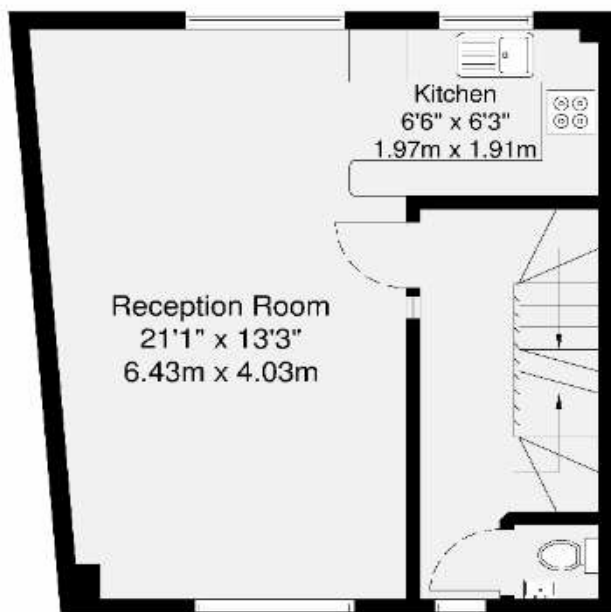


Second Floor

En-Suite  
7'10" x 6'1"  
2.39m x 1.86m



Ground Floor



First Floor

GROSS INTERNAL AREA (GIA)  
The scope is of the property  
108.5 sq m / 1168 sq ft

TOTAL STORAGE SPACE  
Storage and wardrobe total area  
5.6 sq m / 60 sq ft

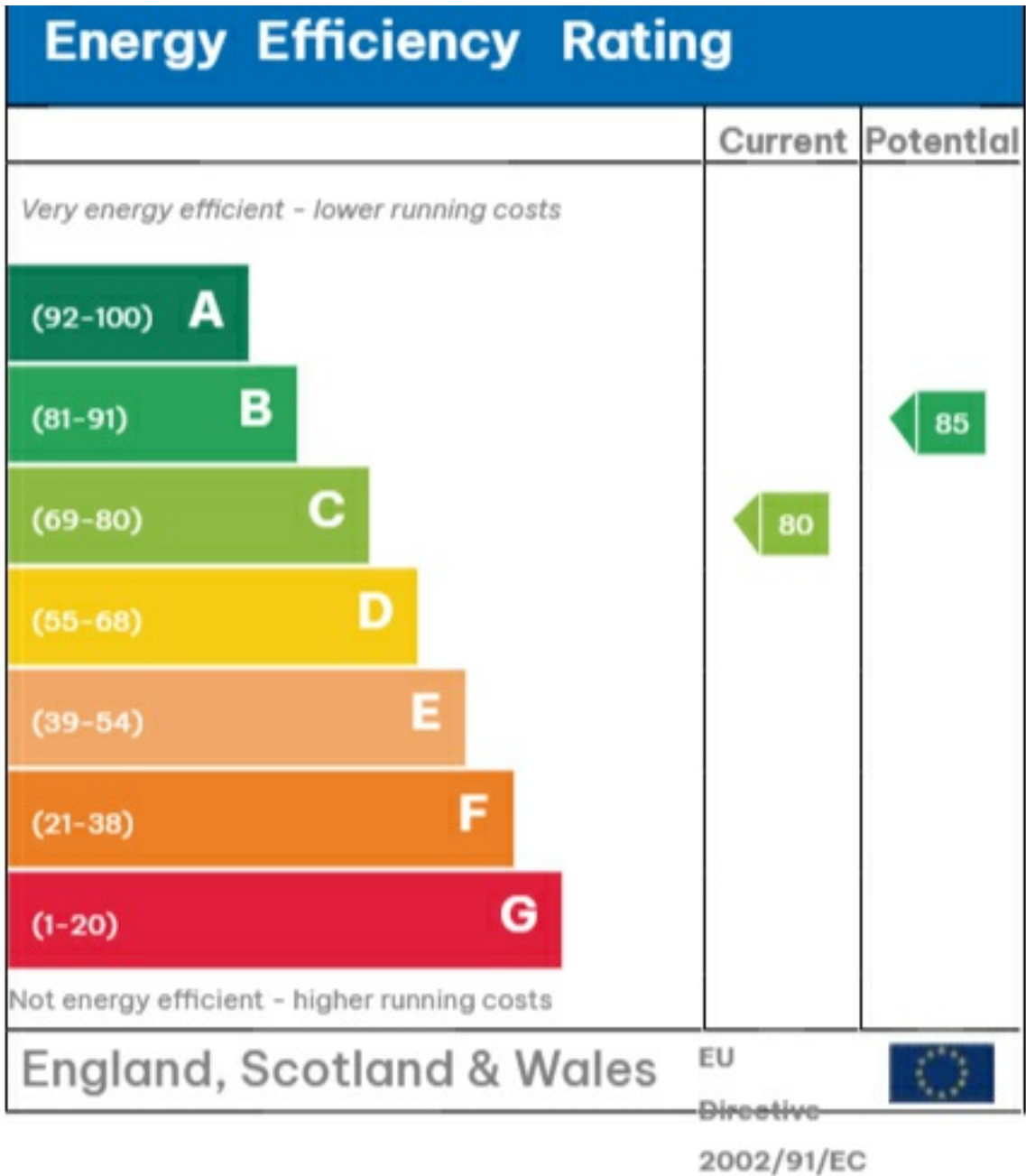
EXTERNAL FEATURES  
Garden, Balcony, Terrace, Verandah etc.  
0.0 sq m / 0.0 sq ft

RESTRICTED HEAD HEIGHT  
Limited use area under 1.5m  
0.0 sq m / 0.0 sq ft

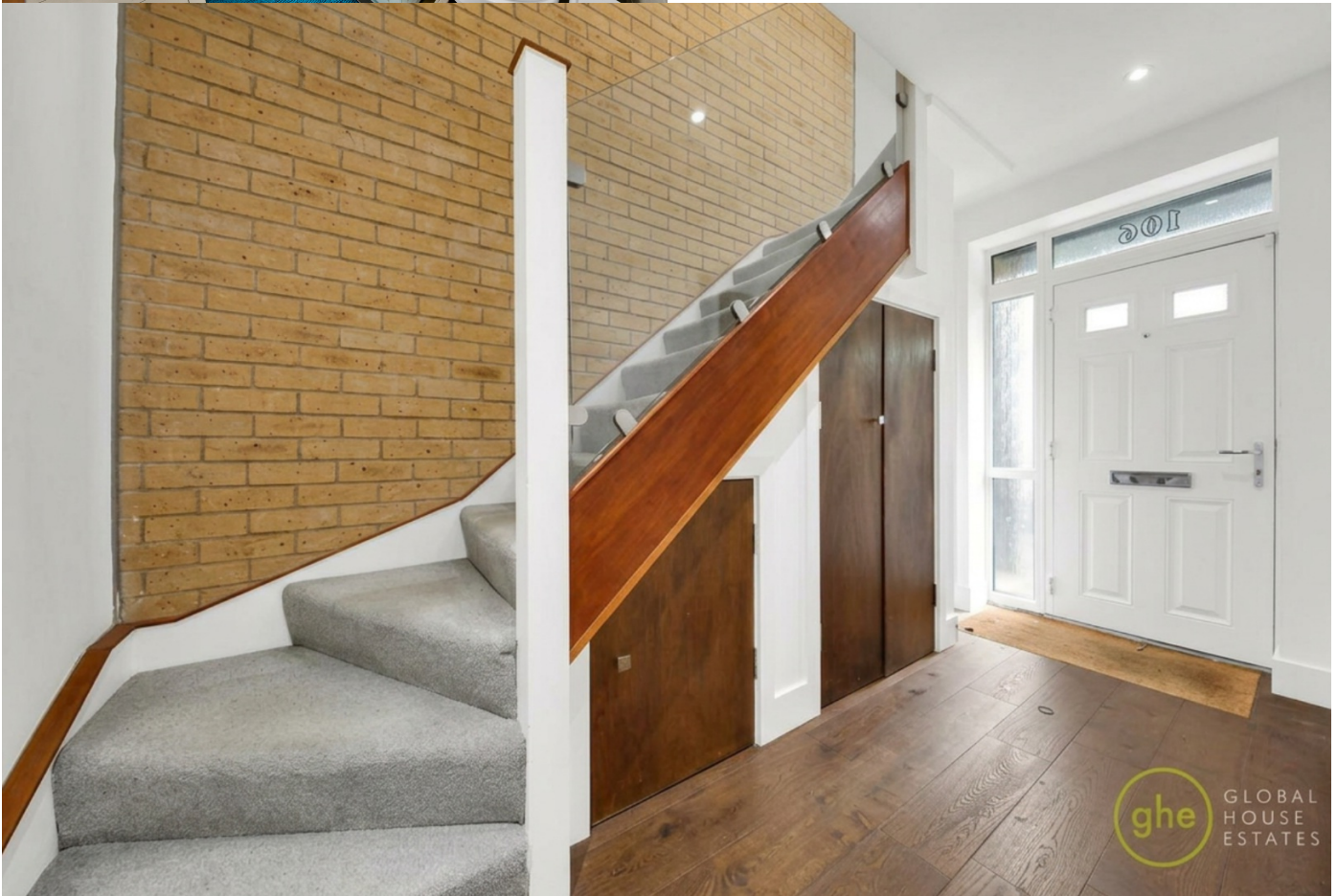
Disclaimer : Floorplan measurements are approximate and are for illustrative purposes only. While we do not count the floorplan accuracy and completeness, you or your advisors should conduct a careful, independent investigation of the property in respect of monetary valuation.

Maison  
VUE

# EPC







35a St Georges Road, London,  
SE1 6EW  
+44 (0) 207 401 2020

<https://globalhouseestates.com>

Level 24, Lee Garden One,  
33 Hysan Ave, Causeway Bay,  
Hong Kong  
+852 3963 8411