

0247 401 2020 | enquiries@globalhousestates.com

ANTONINE HEIGHTS, LONDON BRIDGE, LONDON

£2,200.00



FOR LET



- One bedroom
- Just off Bermondsey Street
- 5 minutes from London Bridge station
- Balcony



Property Description

A stunning 1 bedroom apartment just a 5 minute walk from London Bridge station in sought after Antonine Heights. Located just off Bermondsey Street you can't get much closer to the fashionable shops and restaurants. Comprising spacious reception with balcony, separate kitchen, double bedroom and family bathroom. This development also benefits from a lift. A must see.

Viewing

Please contact our Global House Estates Ltd Office on 0207 401 2020 if you wish to arrange a viewing appointment for this property or require further information.

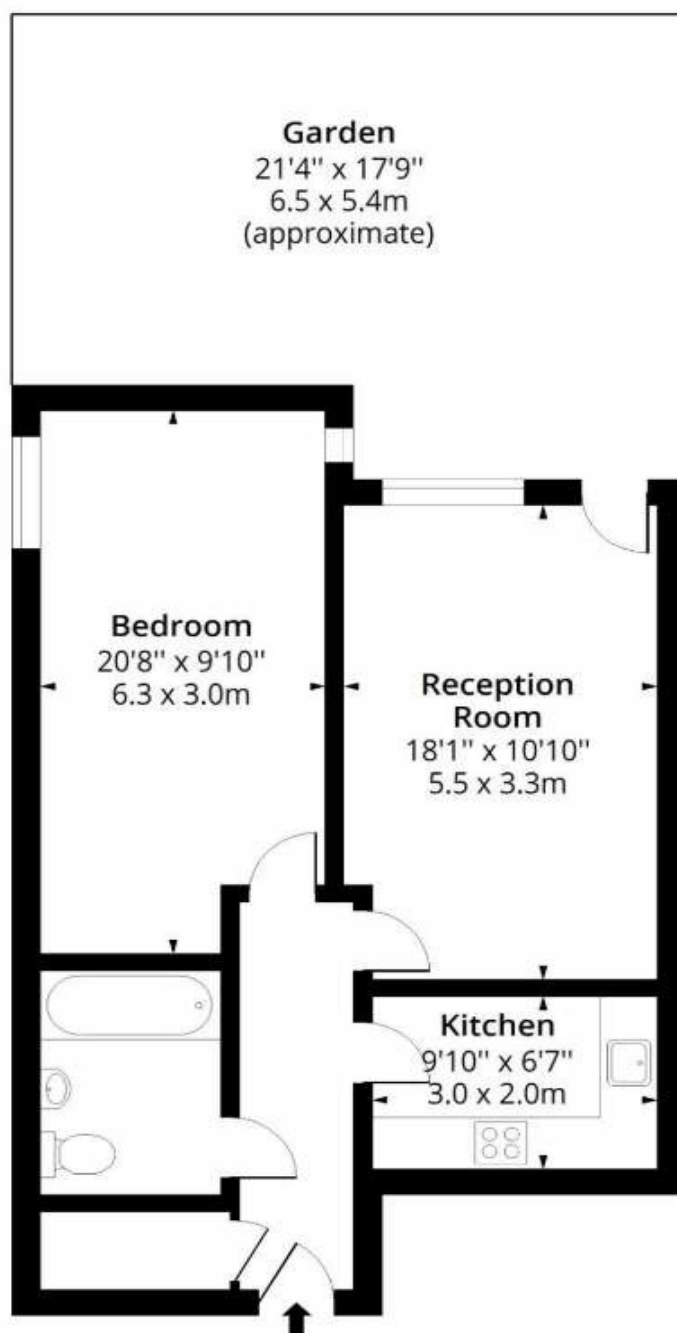
Disclaimer

This website provides information about buying, selling, renting UK property. The information is from reliable sources, but we can't guarantee that it's always accurate. There may be mistakes or changes in the information, such as price, availability, leases, or financing. The square footage is also an estimate and should be confirmed by a professional architect or engineer.

Floor plan

Antonine Heights, SE1

Approx. Gross Internal Area 624 Sq Ft - 57.97 Sq M



Ground Floor

Floor Area 624 Sq Ft - 57.97 Sq M

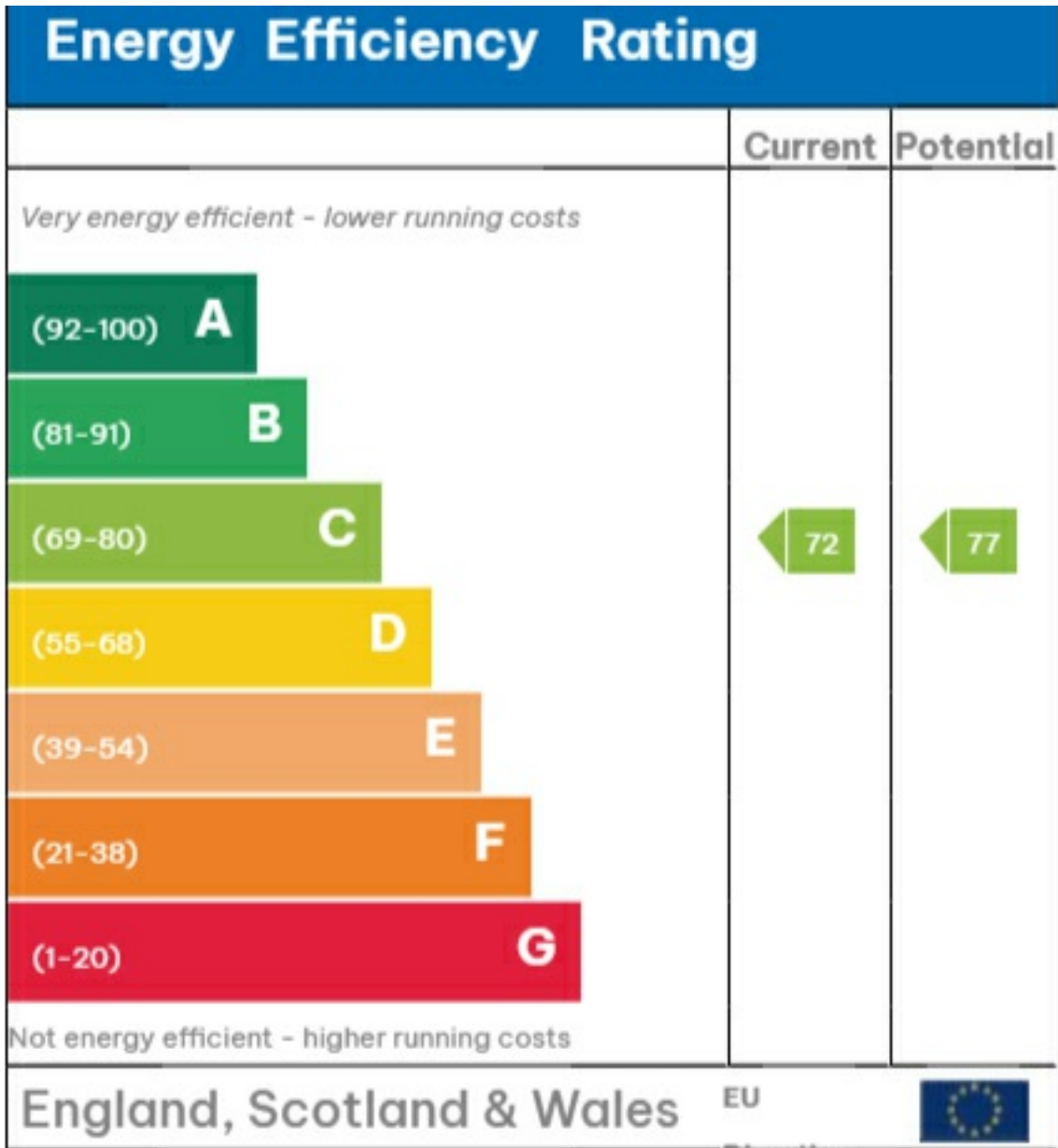


Measured according to RICS IPMS2. Floor plan is for illustrative purposes only and is not to scale. Every attempt has been made to ensure the accuracy of the floor plan shown, however all measurements, fixtures, fittings and data shown are an approximate interpretation for illustrative purposes only. 1 sq m = 10.76 sq feet.

lpaplus.com

Date: 26/5/2023

EPC



Directive

2002/91/EC





35a St Georges Road, London,
SE1 6EW
+44 (0) 207 401 2020

<https://globalhousestates.com>

Level 24, Lee Garden One,
33 Hysan Ave, Causeway Bay,
Hong Kong
+852 3963 8411