

0247 401 2020 | enquiries@globalhousestates.com

THORPARCH ROAD, VAUXHALL, LONDON

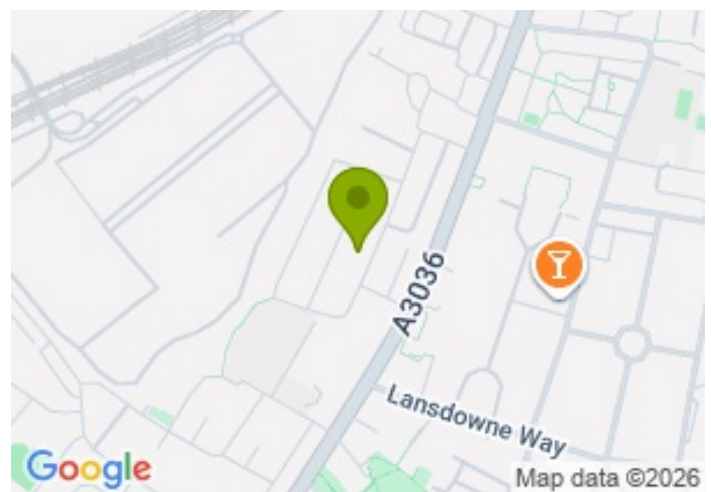
£2,150.00



FOR LET



- One Bedroom Flat
- Part furnished
- Newly Painted
- Brand New Carpet
- Private Roof Terrace
- Short Walk to Vauxhall
- Lots Of Local Amenities
- Heating Included



## Property Description

This beautifully presented one-bedroom flat offers comfortable and stylish living, ideally suited to professionals or couples. Recently refreshed throughout, the property benefits from brand-new carpeting and has been newly painted, creating a bright, clean, and modern living environment.

The accommodation comprises a spacious reception room, a well-proportioned bedroom, a fitted kitchen, and a bathroom. A standout feature of the property is the private roof terrace, providing an excellent outdoor space for relaxing, entertaining, or enjoying outdoor dining.

Conveniently located close to local amenities and transport links, this attractive flat combines indoor comfort with valuable outdoor living space.

This property is conventionally located within a short walk to both Vauxhall and Nine Elms stations

Early viewing is highly recommended to fully appreciate all that this property has to offer.

## Viewing

Please contact our Global House Estates Ltd Office on 0207 401 2020 if you wish to arrange a viewing appointment for this property or require further information.

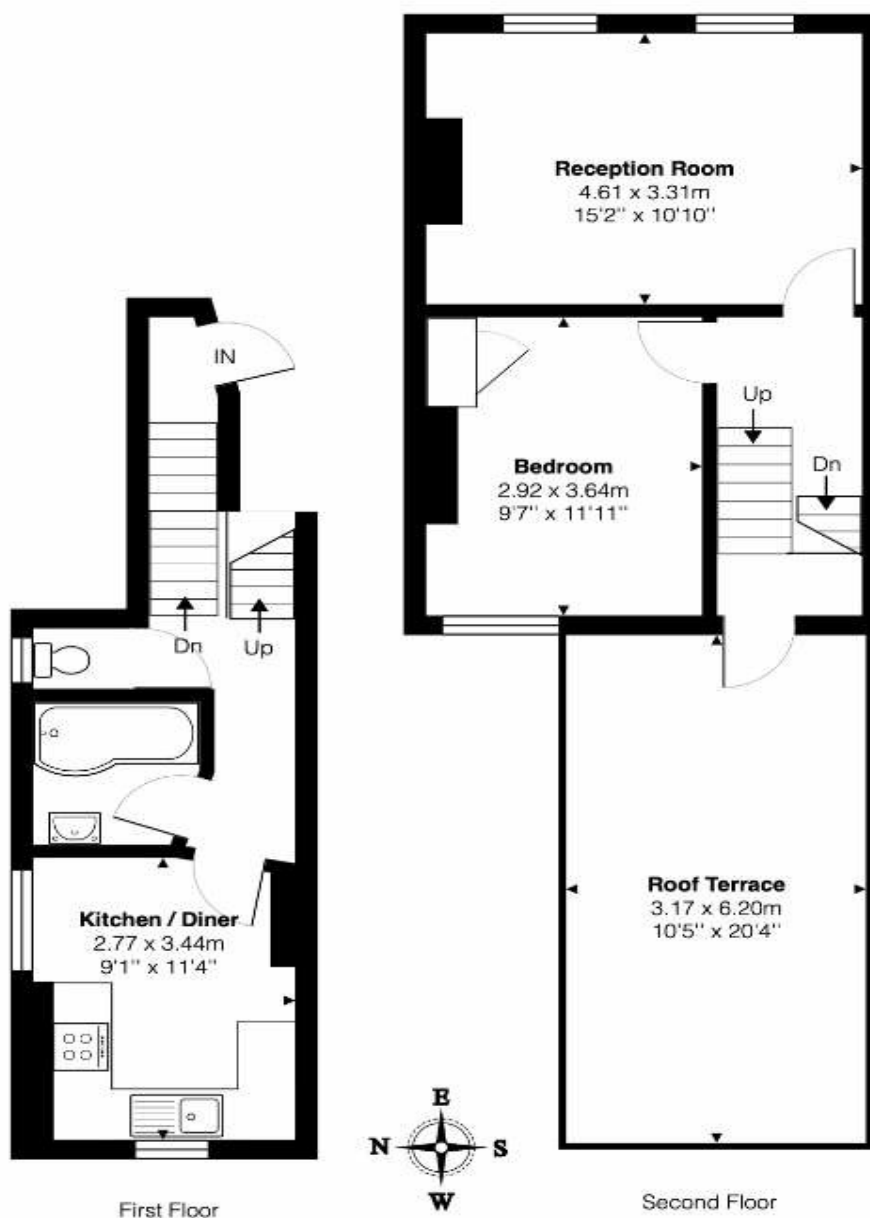
## Disclaimer

This website provides information about buying, selling, renting UK property. The information is from reliable sources, but we can't guarantee that it's always accurate. There may be mistakes or changes in the information, such as price, availability, leases, or financing. The square footage is also an estimate and should be confirmed by a professional architect or engineer.

# Floor plan

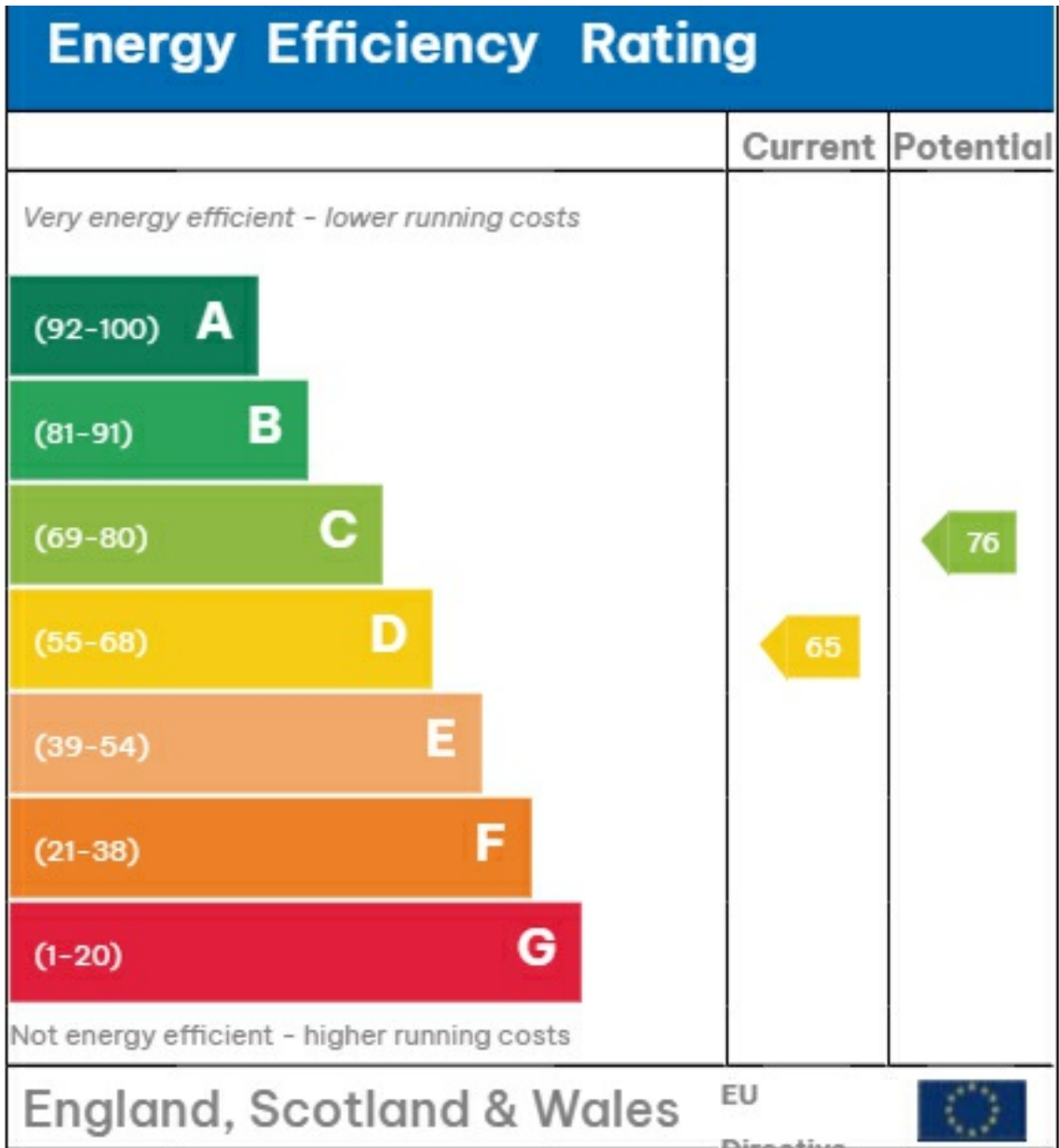
## Top Floor Flat, Thorpach Road, SW8

Total Area: 53.9 m<sup>2</sup> ... 580 ft<sup>2</sup> (excluding roof terrace)



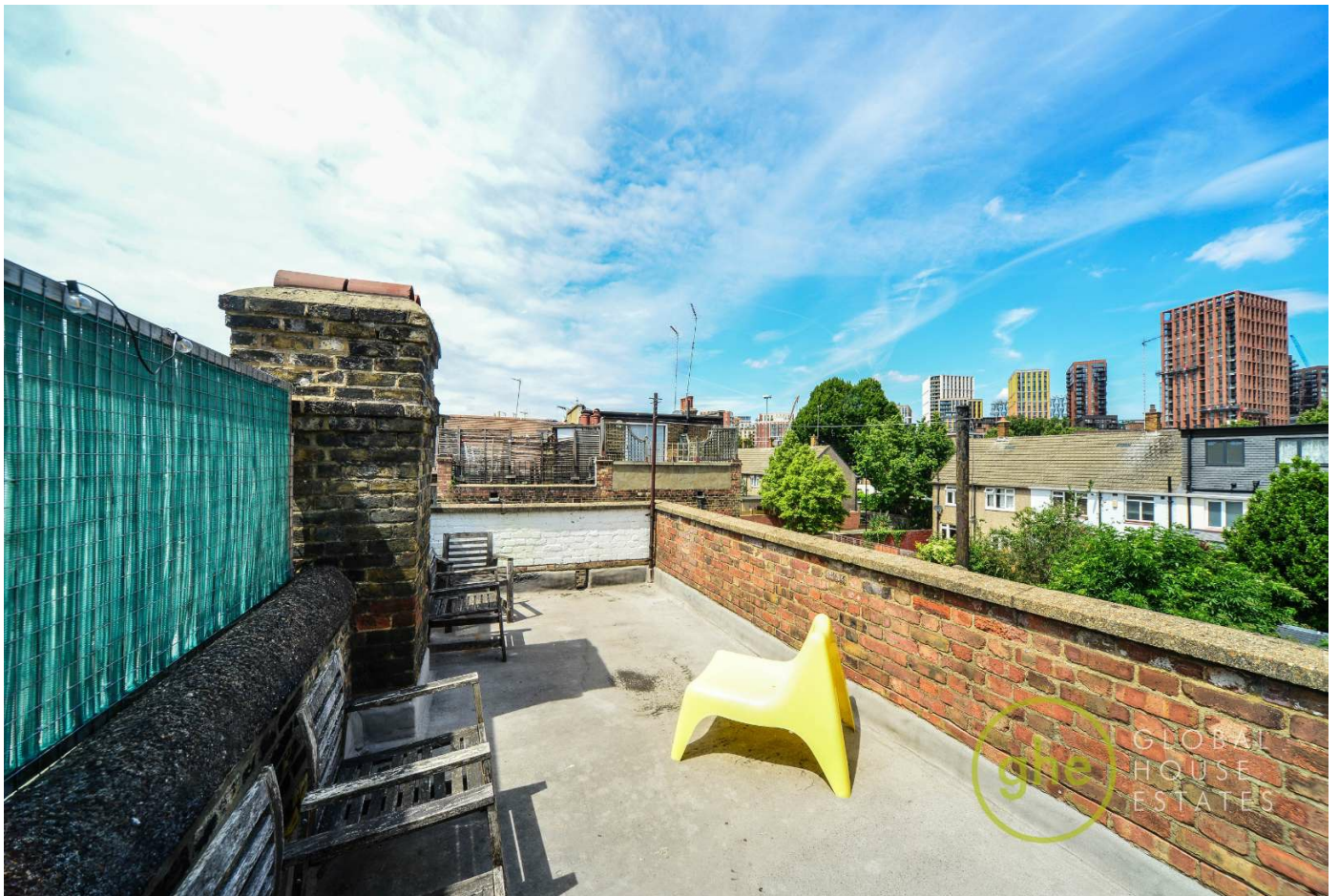
This Floorplan is provided without warranty, of any kind.  
Bespoke Plans disclaims any warranty including,  
without limitation, satisfaction, quality or accuracy of any dimensions

# EPC



2002/91/EC





35a St Georges Road, London,  
SE1 6EW  
+44 (0) 207 401 2020

<https://globalhouseestates.com>

Level 24, Lee Garden One,  
33 Hysan Ave, Causeway Bay,  
Hong Kong  
+852 3963 8411