

0247 401 2020 | enquiries@globalhouseestates.com

DUNBLANE ROAD, ELTHAM, LONDON

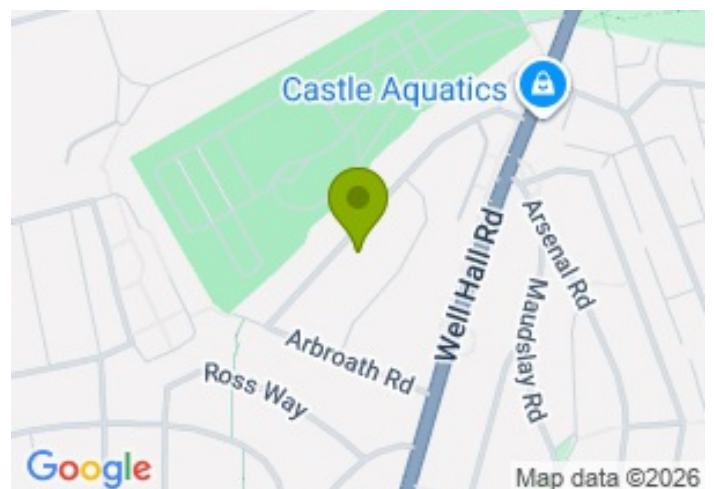
£2,700.00



FOR LET



- Semi detached family house
- 4 bedrooms
- Beautiful garden
- Drive for 2 cars
- Excellent location



Property Description

This beautifully newly refurbished four bedroom family house offers excellent living space in the popular and leafy area of Eltham. The heart of the home is a large, bright kitchen and dining area with a striking skylight, perfect for family meals and entertaining. There are two bathrooms and four good-sized bedrooms, large rear garden features a spacious decking area, ideal for summer entertaining, plus a useful outhouse. To the front is a wide driveway providing off-street parking for two cars. Eltham offers an excellent family lifestyle with parks, local schools, and shops nearby. Eltham station is just a short walk away, with frequent services to London Charing Cross, Victoria and Canon Street in approximately 20-25 minutes. Bus routes also available to North Greenwich Jubilee Line, Woolwich DLR and the Elizabeth Line.

Viewing

Please contact our Global House Estates Ltd Office on 0207 401 2020 if you wish to arrange a viewing appointment for this property or require further information.

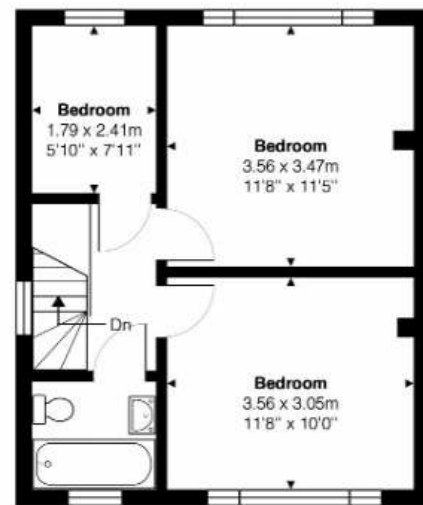
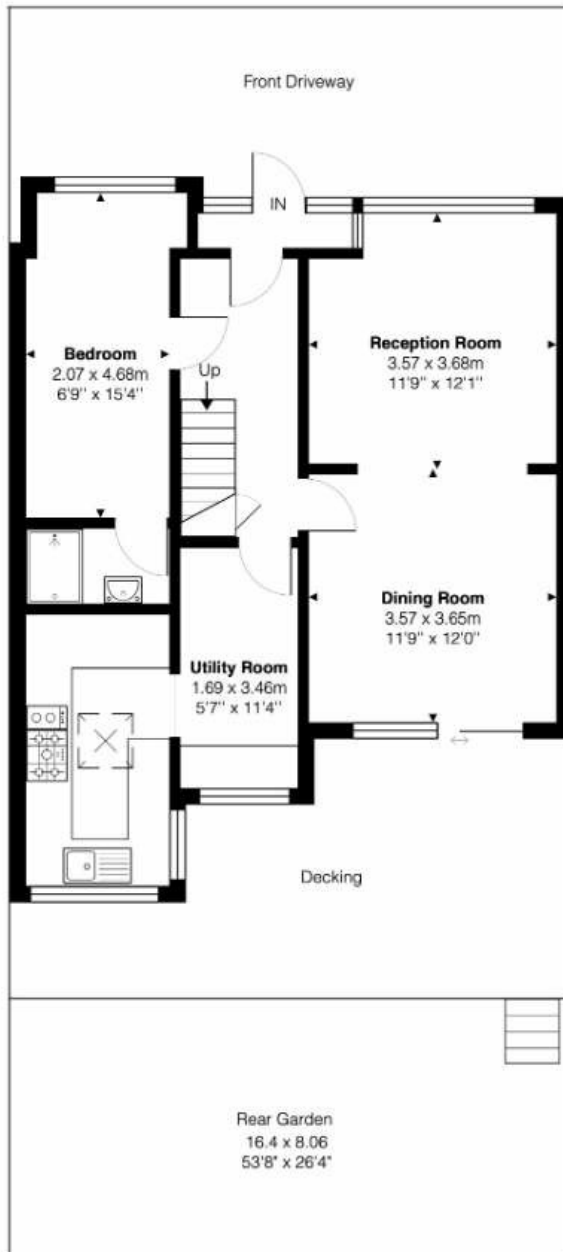
Disclaimer

This website provides information about buying, selling, renting UK property. The information is from reliable sources, but we can't guarantee that it's always accurate. There may be mistakes or changes in the information, such as price, availability, leases, or financing. The square footage is also an estimate and should be confirmed by a professional architect or engineer.

Floor plan

Dunblame Road, SE9

Total Area: 100.1 m² ... 1077 ft²

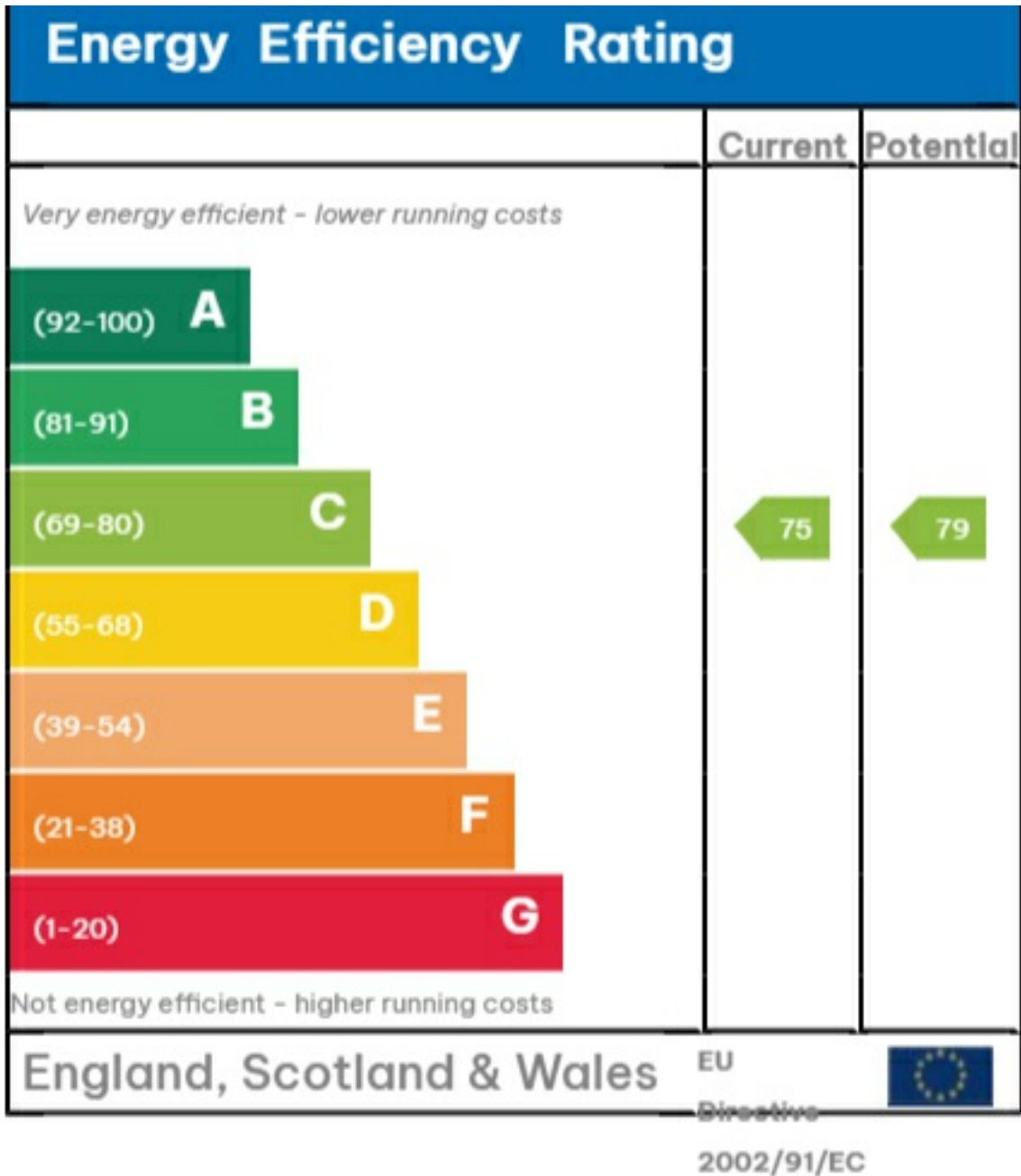


First Floor



This Floorplan is provided without warranty, of any kind.
Bespoke Plans disclaims any warranty including,
without limitation, satisfaction, quality or accuracy of any dimensions

EPC











35a St Georges Road, London,
SE1 6EW
+44 (0) 207 401 2020

<https://globalhouseestates.com>

Level 24, Lee Garden One,
33 Hysan Ave, Causeway Bay,
Hong Kong
+852 3963 8411