

0247 401 2020 | enquiries@globalhousestates.com

NORTHDOWN STREET, KINGS CROSS, LONDON

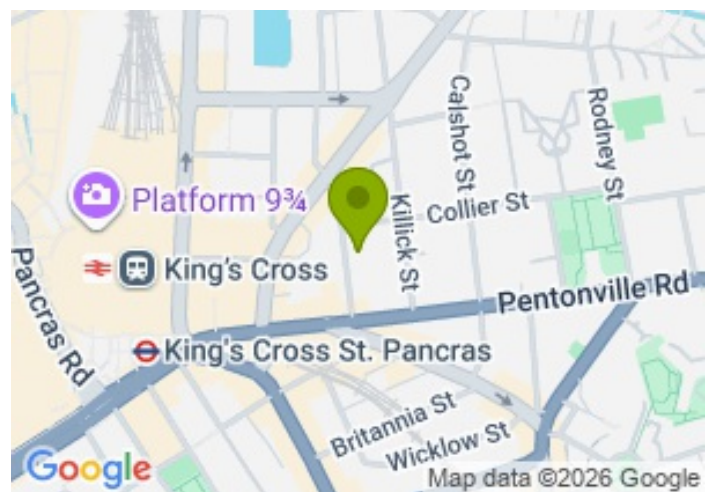
£1,000,000.00



FOR SALE



- Three-bedroom duplex penthouse
- Two private balconies
- Modern boutique development
- Near Kings Cross Station
- On-street parking available
- Chain Free
- Healthy length of lease



Property Description

Situated on a quiet residential street in the heart of King's Cross, this exceptional three-bedroom duplex penthouse offers luxurious contemporary living within a modern development completed in 2017. Set across the upper floors of an elegant five-storey building with lift access, the property combines stylish interiors with beautifully bright living space, all just moments from King's Cross St Pancras station.

Upon entering the apartment, you are welcomed by an impressive open-plan kitchen and reception room. The beautifully appointed Poggenpohl kitchen, with built-in appliances, seamlessly flows into the spacious living and dining area, perfect for entertaining. A private terrace extends directly from the reception room, providing a peaceful outdoor retreat.

Also located on the lower floor is a versatile double bedroom, alongside a stylish contemporary three-piece bathroom.

The upper floor hosts the generous principal bedroom, complete with a luxurious en-suite bathroom and ample fitted storage. A second spacious double bedroom and an additional modern family bathroom complete the home. Throughout the apartment, high-specification finishes include engineered oak flooring, underfloor heating, and energy-efficient Schuco double-glazed windows.

Perfectly positioned just a four-minute walk from King's Cross St Pancras Underground, mainline, and international stations, the property offers exceptional connectivity across London, the UK, and Europe. Residents benefit from being surrounded by an outstanding selection of cafés, restaurants, boutiques, and cultural attractions.

The property is under short-term lettings. Please contact Global House Estates for additional information.

Length of lease: 240 years

Service charge: circa £6176 per annum

Ground rent: £450.00 per annum

All data and information set forth on this website regarding real property, for sale, purchase, rental and/or financing, are from sources regarded as reliable. No warranties are made as to the accuracy of any descriptions and/or other details and such information is subject to errors, omissions, changes of price, tenancies, commissions, prior sales, leases or financing, or withdrawal without notice. Square footage is approximate and may be verified by consulting a professional architect or engineer.

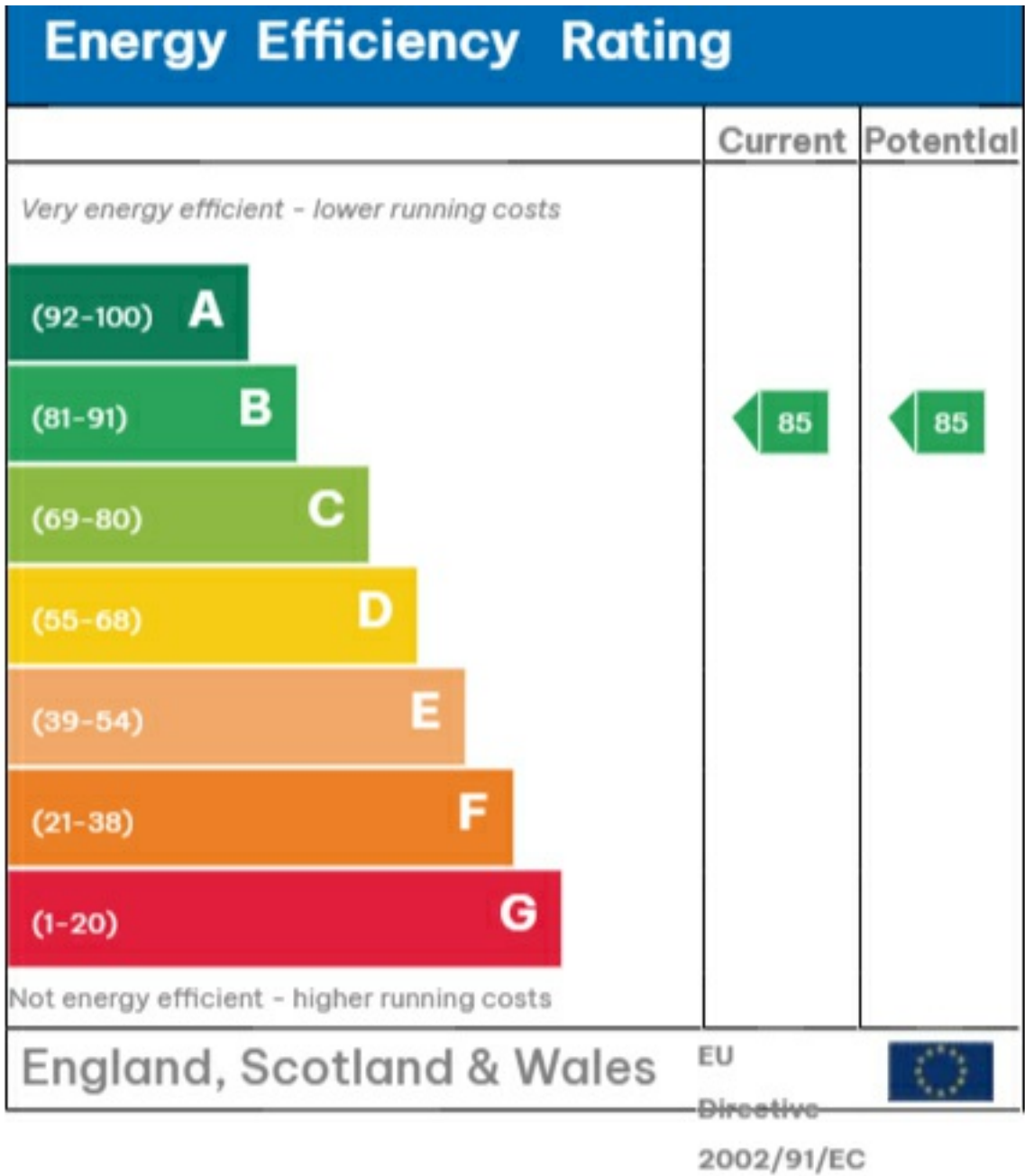
Viewing

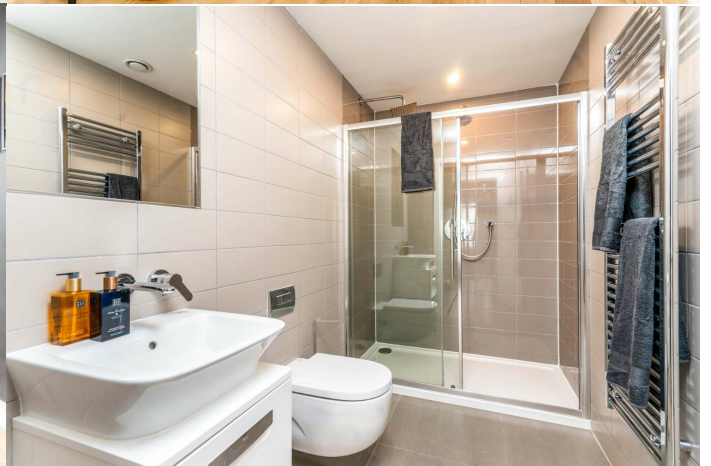
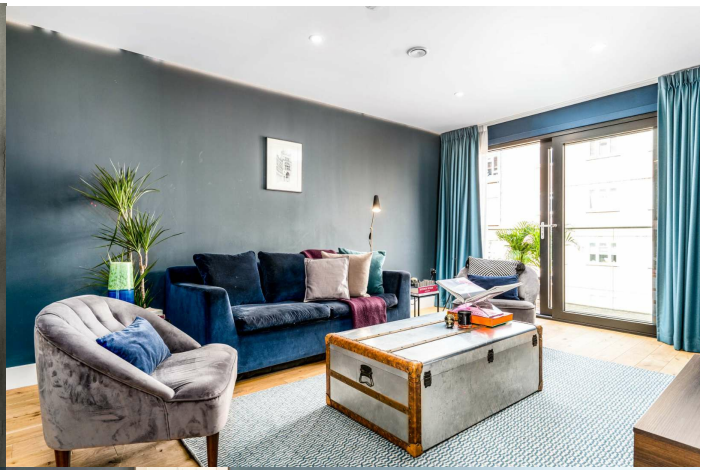
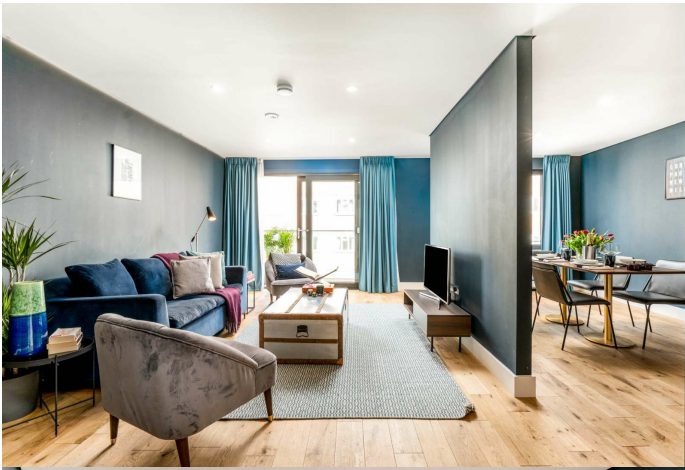
Please contact our Global House Estates Ltd Office on 0207 401 2020 if you wish to arrange a viewing appointment for this property or require further information.

Disclaimer

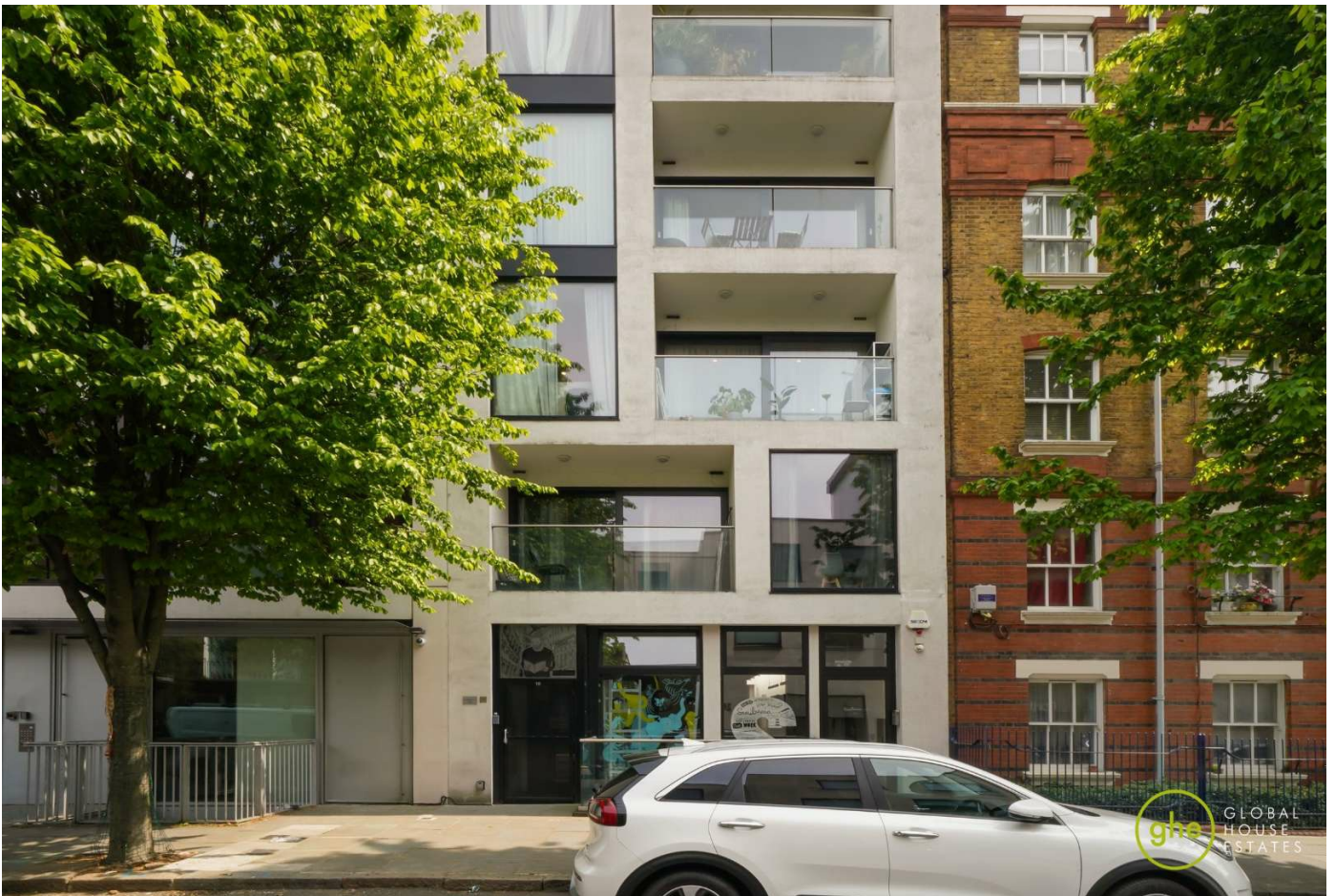
This website provides information about buying, selling, renting UK property. The information is from reliable sources, but we can't guarantee that it's always accurate. There may be mistakes or changes in the information, such as price, availability, leases, or financing. The square footage is also an estimate and should be confirmed by a professional architect or engineer.

EPC









35a St Georges Road, London,
SE1 6EW
+44 (0) 207 401 2020

<https://globalhouseestates.com>

Level 24, Lee Garden One,
33 Hysan Ave, Causeway Bay,
Hong Kong
+852 3963 8411