

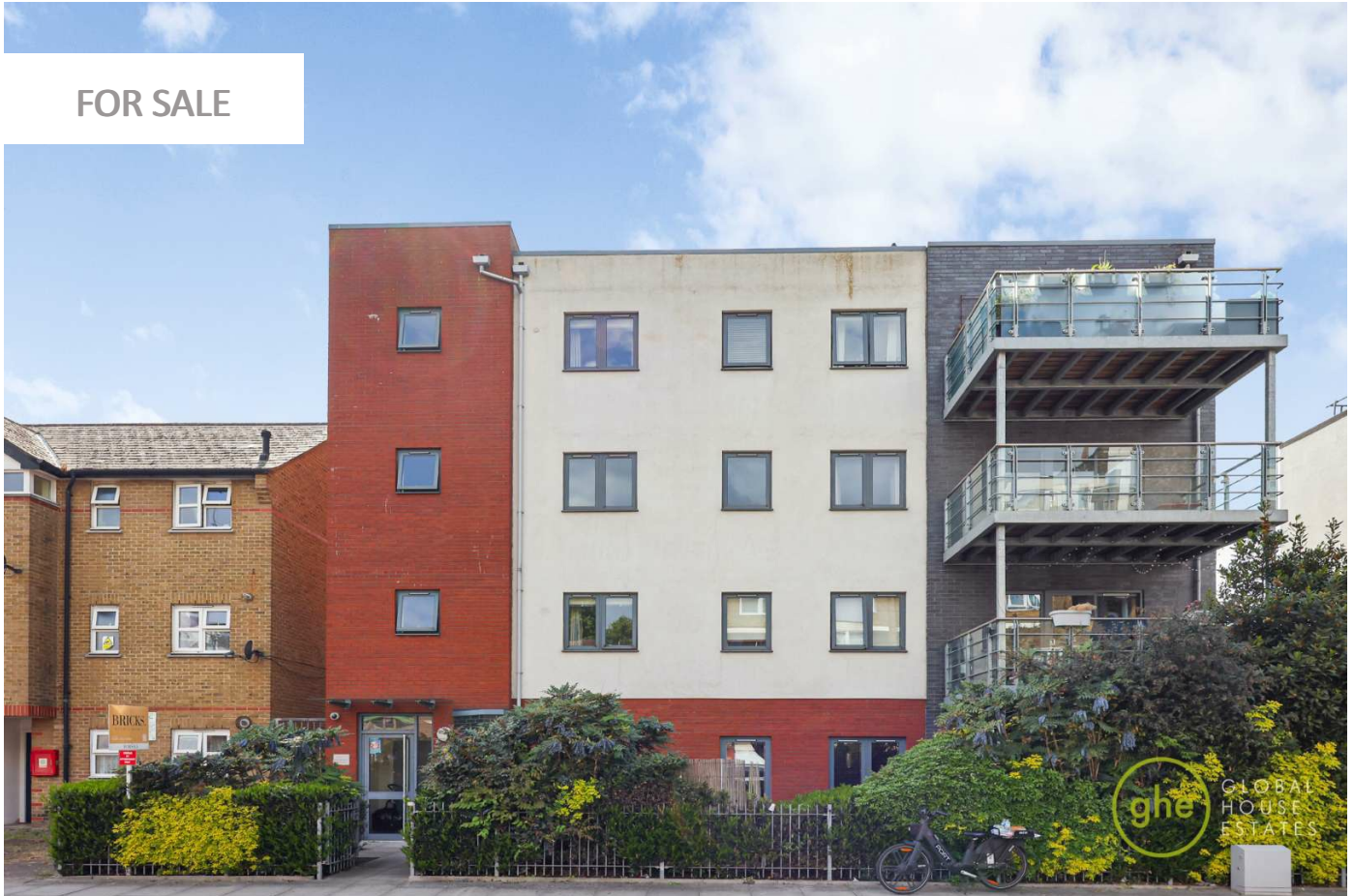
0247 401 2020 | enquiries@globalhousestates.com

36C ENGLISH STREET, BOW, LONDON

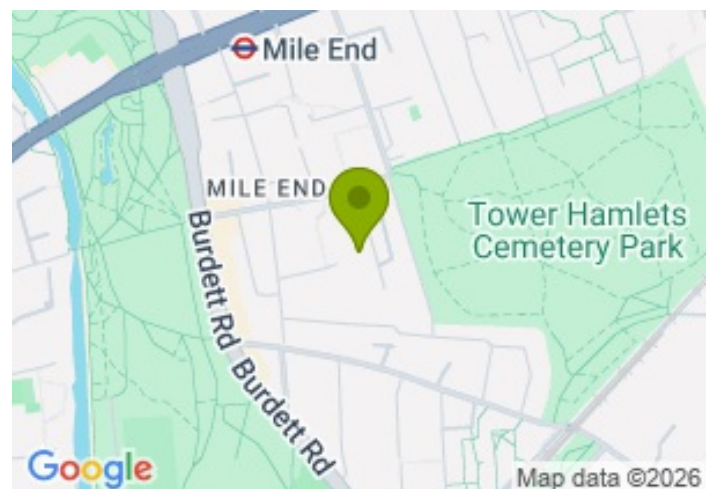
£450,000.00



FOR SALE



- Three double bedroom flat
- Two bathrooms
- Excellent location
- Private balcony
- Open plan Kitchen and dining area
- Natural light throughout
- Progressed transaction- no onward chain
- Long lease



Property Description

Located in the vibrant heart of Bow, this beautifully presented three-bedroom apartment is situated on the second floor of the secure and peaceful development, which comprises three flats in total. Beatrix Apartments, offering contemporary living in one of East London's most well-connected neighbourhoods.

The property welcomes you with a spacious entrance hallway leading through to a bright and expansive open-plan reception, dining and kitchen area, beautifully designed to maximise natural light and create an ideal space for both relaxing and entertaining. The modern fitted kitchen is seamlessly integrated into the living space, offering ample storage, generous worktop space and a stylish contemporary finish. Sliding doors open directly onto a charming private balcony, providing the perfect outdoor retreat to unwind and enjoy the surroundings. Double-glazed windows throughout further enhance the home's comfort and energy efficiency.

The apartment further benefits from a spacious principal double bedroom complete with a sleek modern en-suite bathroom, while two additional well-proportioned bedrooms offer flexible accommodation ideal for family living, guests or working from home. A stylish three-piece family bathroom, as well as a separate storage cupboard, completes this beautifully presented flat.

Perfectly positioned in Bow, the property is surrounded by an excellent selection of local amenities, including cafés, restaurants, shops, and parks, making it an ideal choice for professionals, families, and investors alike.

Excellent transport links are within walking distance, with nearby underground stations and bus routes providing convenient access to Canary Wharf, the City and beyond.

Offered with vacant possession. Please contact Global House Estates for more information.

Length of lease: approximately 236 years remaining

Ground rent: £250 per annum

Service charge: approximately £3,470 per annum

All data and information set forth on this website regarding real property, for sale, purchase, rental and/or financing, are from sources regarded as reliable. No warranties are made as to the accuracy of any descriptions and/or other details and such information is subject to errors, omissions, changes of price, tenancies, commissions, prior sales, leases or financing, or withdrawal without notice. Square footages are approximate and may be verified by consulting a professional architect or engineer.

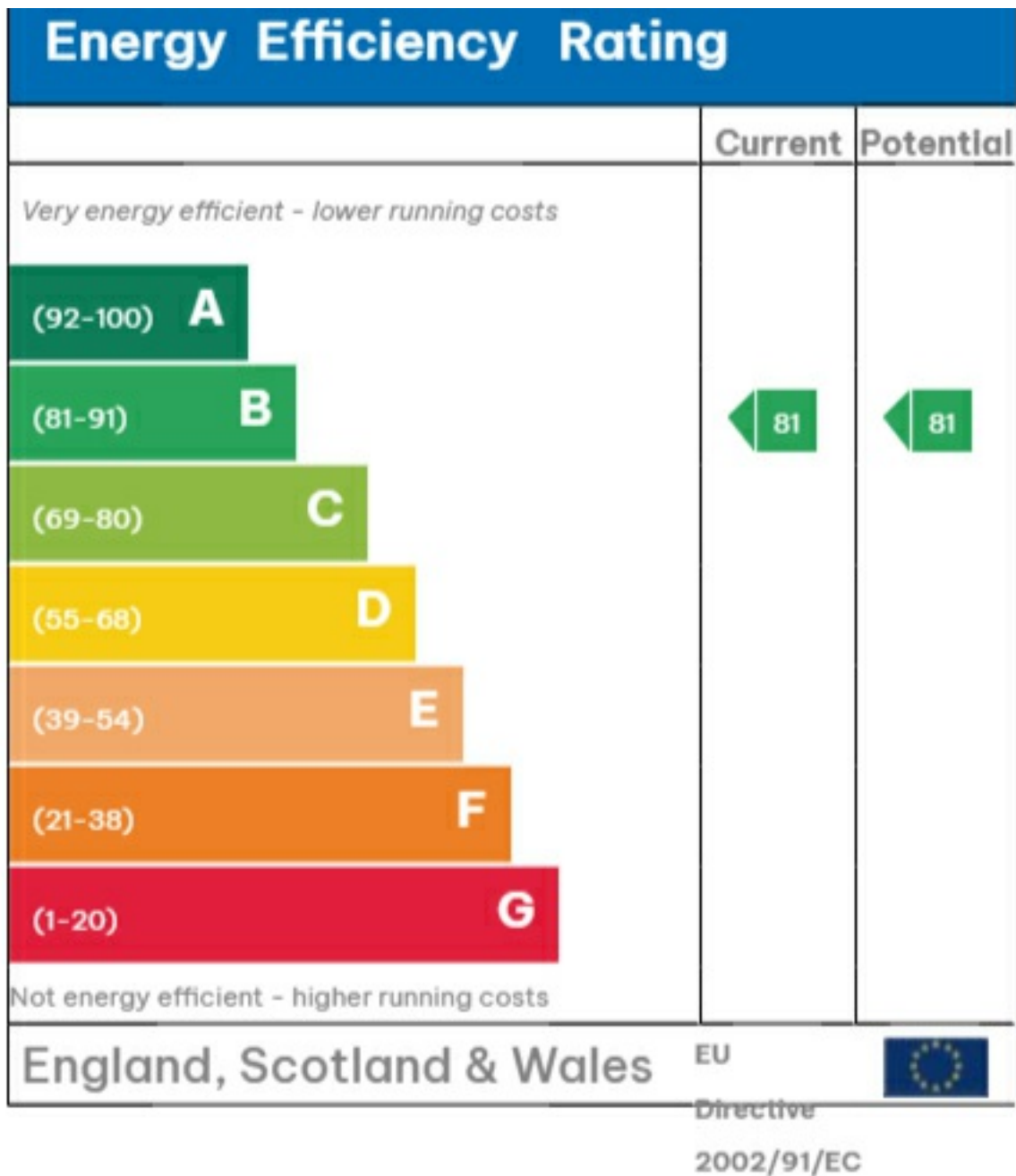
Viewing

Please contact our Global House Estates Ltd Office on 0207 401 2020 if you wish to arrange a viewing appointment for this property or require further information.

Disclaimer

This website provides information about buying, selling, renting UK property. The information is from reliable sources, but we can't guarantee that it's always accurate. There may be mistakes or changes in the information, such as price, availability, leases, or financing. The square footage is also an estimate and should be confirmed by a professional architect or engineer.

EPC







35a St Georges Road, London,
SE1 6EW
+44 (0) 207 401 2020

<https://globalhouseestates.com>

Level 24, Lee Garden One,
33 Hysan Ave, Causeway Bay,
Hong Kong
+852 3963 8411