

0247 401 2020 | enquiries@globalhousestates.com

## HALF MOON LANE, HERNE HILL, LONDON

£807.69



FOR LET



- Two Bedrooms
- Three Bathrooms
- Secure Parking For Two Cars
- Furnished
- Private Garden
- Wooden Floors
- Large Study Space
- Great Transport Links



## Property Description

Tucked away on the charming Half Moon Lane right in the heart of Dulwich, this beautifully renovated two-bedroom home spread over two floors offers spacious living with delightful period features. The entire property has been freshly updated to a high standard. It features a large living area divided into two parts and a spacious studio space—perfect for those working from home—plus a generous utility room just off the modern kitchen.

The apartment includes two generously sized bedrooms, with a walk-in wardrobe providing fantastic storage, along with an additional third storage room or study/gym room for extra flexibility.

Lovely wooden floorboards throughout add to the character of the home. The brand new, high-spec kitchen boasts beautiful worktops with a full-height upstand and top-of-the-line appliances. There are 3 bathrooms in total, including 2 en-suites, and you'll also get to enjoy access to a private jacuzzi that's been fully renovated and finished to a sleek, modern standard. Other upgrades include a newly installed energy-efficient boiler, solid oak-finished doors throughout, and fresh decoration across the entire property. This home wonderfully blends original period features like fireplaces with modern comforts, offering great energy efficiency for a period property. Plus, you'll benefit from a large private garden and secure parking space for two cars.

Just a short stroll from North Dulwich station, you'll have direct rail links to London Bridge—ideal for commuters. The vibrant Dulwich Village centre is close by, filled with independent cafés, restaurants, bars, and local shops. Plus, the beautiful green spaces of Dulwich Park & Brockwell Park, including the popular Brockwell, are nearby, offering some of South London's favourite spots for outdoor fun and relaxation.

This is a fantastic opportunity to rent this beautifully refurbished home in one of South London's most sought-after neighbourhoods, perfectly combining period charm with high-quality modern finishes and wonderful local amenities.

All data and information set forth on this website regarding real property, for sale, purchase, rental and/or financing, are from sources regarded as reliable. No warranties are made as to the accuracy of any descriptions and/or other details and such information is subject to errors, omissions, changes of price, tenancies, commissions, prior sales, leases or financing, or withdrawal without notice. Square footages are approximate and may be verified by consulting a professional architect or engineer.

## Viewing

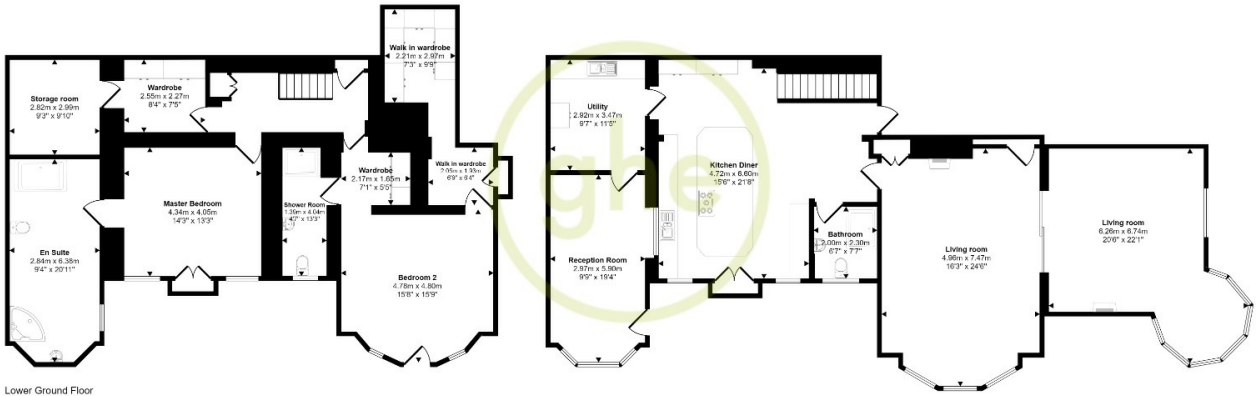
Please contact our Global House Estates Ltd Office on 0207 401 2020 if you wish to arrange a viewing appointment for this property or require further information.

## Disclaimer

This website provides information about buying, selling, renting UK property. The information is from reliable sources, but we can't guarantee that it's always accurate. There may be mistakes or changes in the information, such as price, availability, leases, or financing. The square footage is also an estimate and should be confirmed by a professional architect or engineer.

# Floor plan

Approx Gross Internal Area  
270 sq m / 2904 sq ft

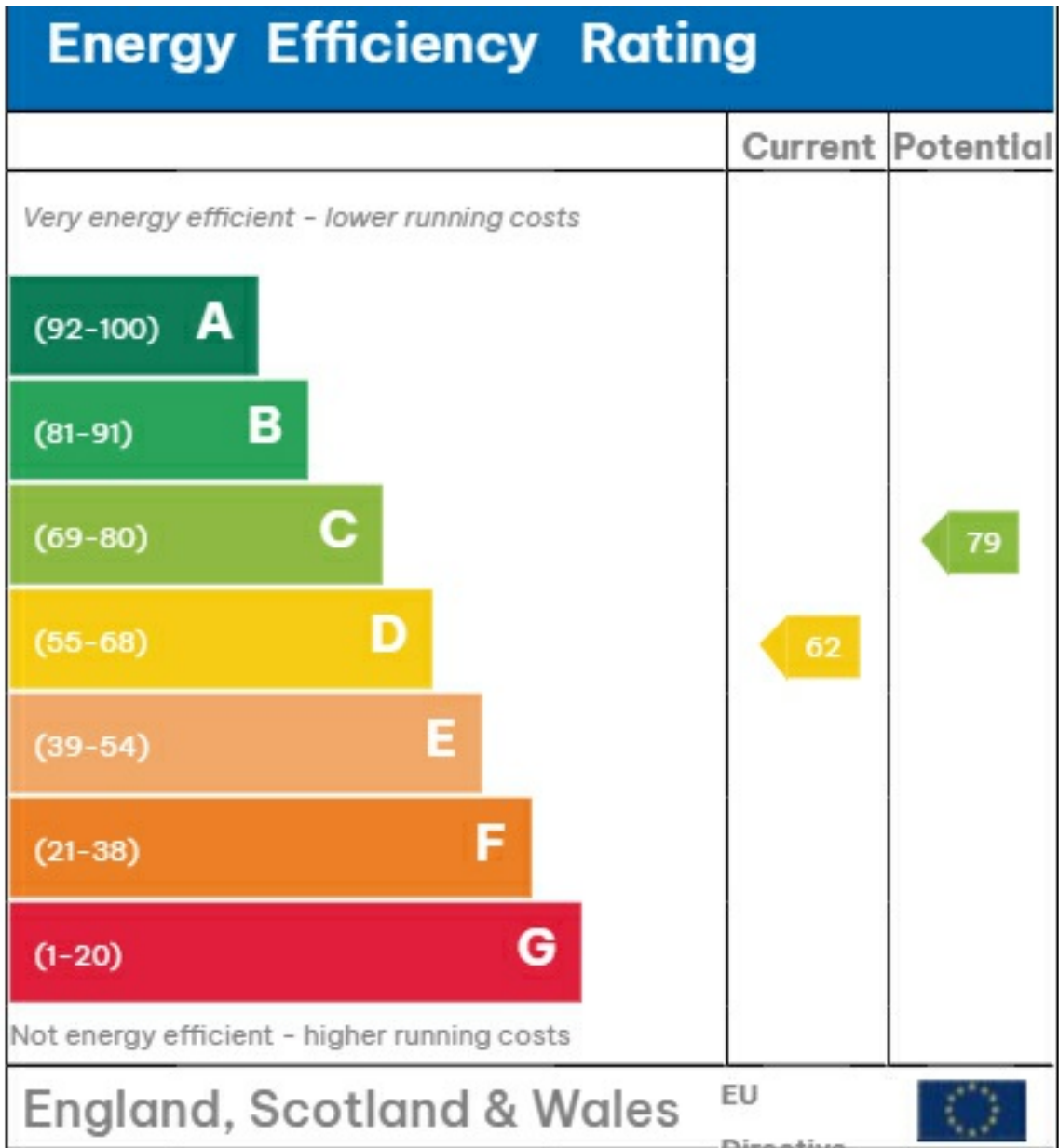


Lower Ground Floor  
Approx 123 sq m / 1328 sq ft

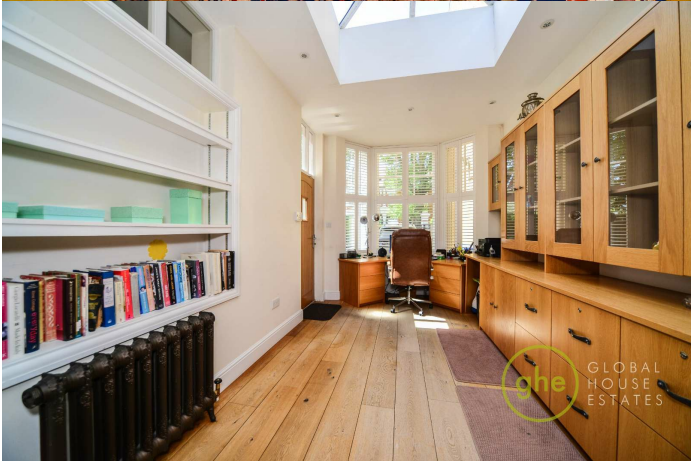
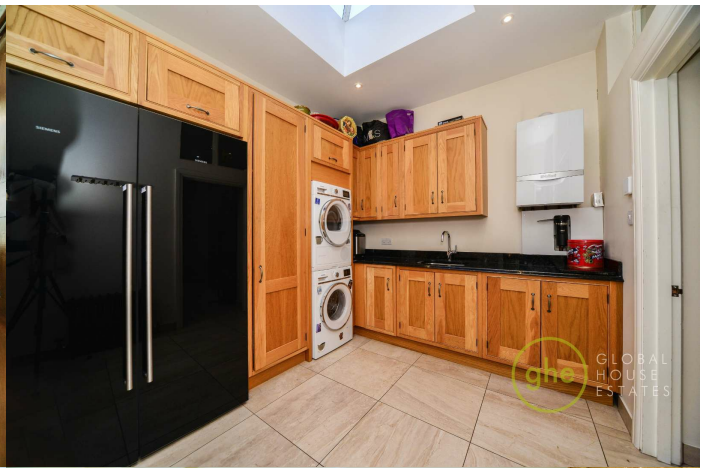
Ground Floor  
Approx 147 sq m / 1577 sq ft

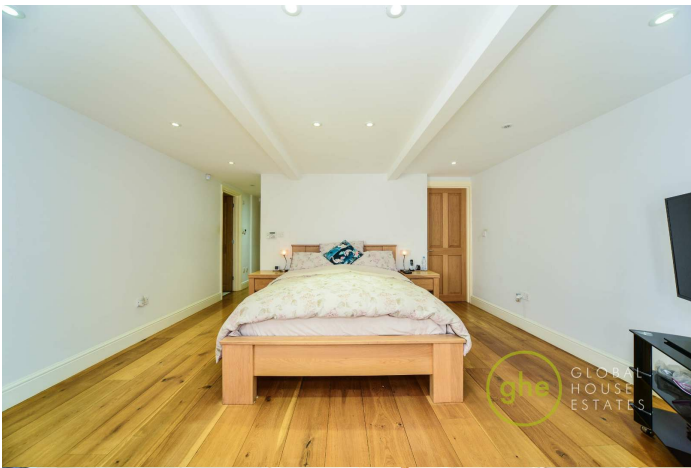
This floor plan is only for illustrative purposes and is not to scale. Measurements of rooms, areas, windows, and any items are approximate and no responsibility is taken for any error, omission or misrepresentation, lack of detail or any other omissions or misrepresentations only and may not look like it in real life. Made with MyEzzy 360.

# EPC



2002/91/EC









35a St Georges Road, London,  
SE1 6EW  
+44 (0) 207 401 2020

<https://globalhouseestates.com>

Level 24, Lee Garden One,  
33 Hysan Ave, Causeway Bay,  
Hong Kong  
+852 3963 8411