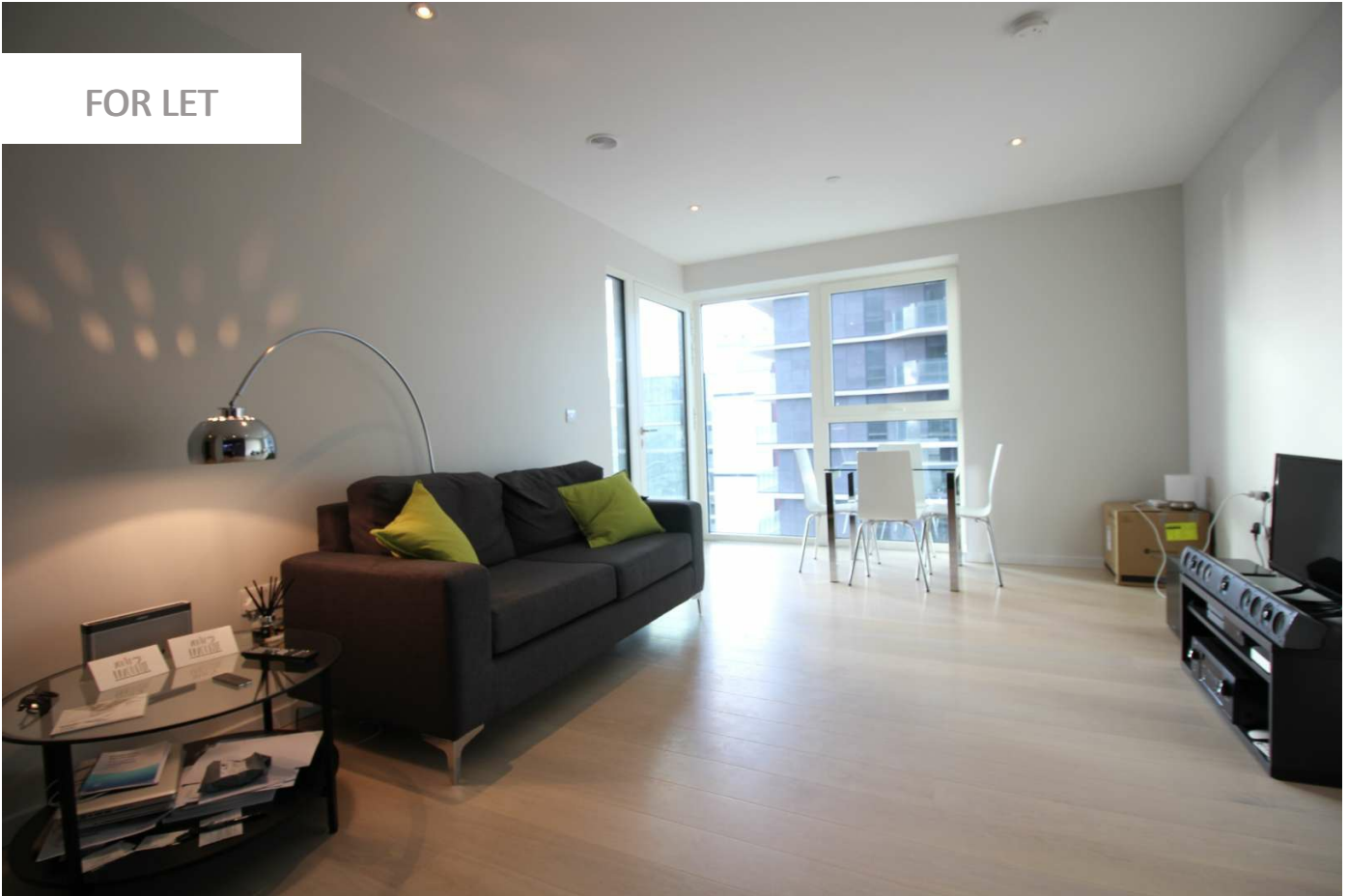


WESTFIELD AVENUE, STRATFORD, LONDON

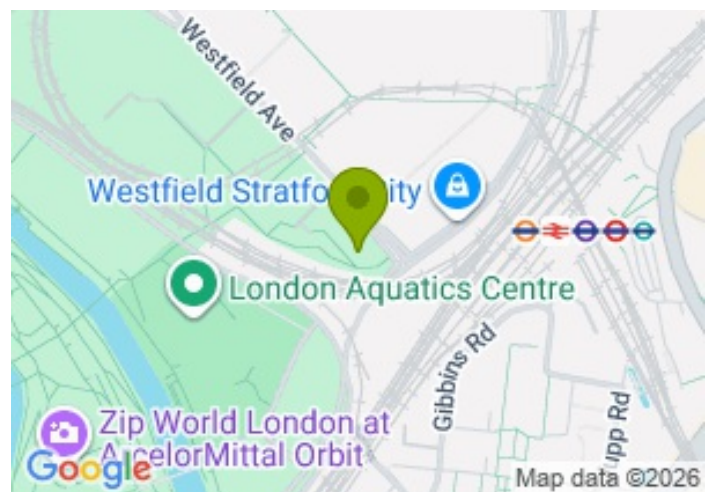
£2,300.00



FOR LET



- 540 sq ft 1 bedroom with balcony
- Views over Queen Elizabeth Park
- Conveniently located to Westfield shopping center
- DLR, Jubilee, Overground and Eurostar in walking distance
- Concierge and Gym
- Council Tax band C



## Property Description

This MODERN 1 bedroom, 1 bathroom apartment within Glasshouse Gardens is available to rent.

Lantana Heights is 540 sq.ft of space in addition outside space with great views over the Queen Elizabeth Olympic park. The kitchen hosts bespoke counters with the superb addition of high end integrated appliances, while the feeling of luxury is evident throughout the apartment thanks to the addition of underfloor heating.

Glasshouse Gardens provides a communal lounge & terrace, there is a private resident's gym & bicycle storage. The tower has a 24 hour concierge desk providing ease of mind for all that reside at Glasshouse Gardens.

Glasshouse Gardens is only moments away from Stratford Station, which is one the best-connected stations in Greater London - with Underground, Overground, National & DLR rail services all utilising this station.

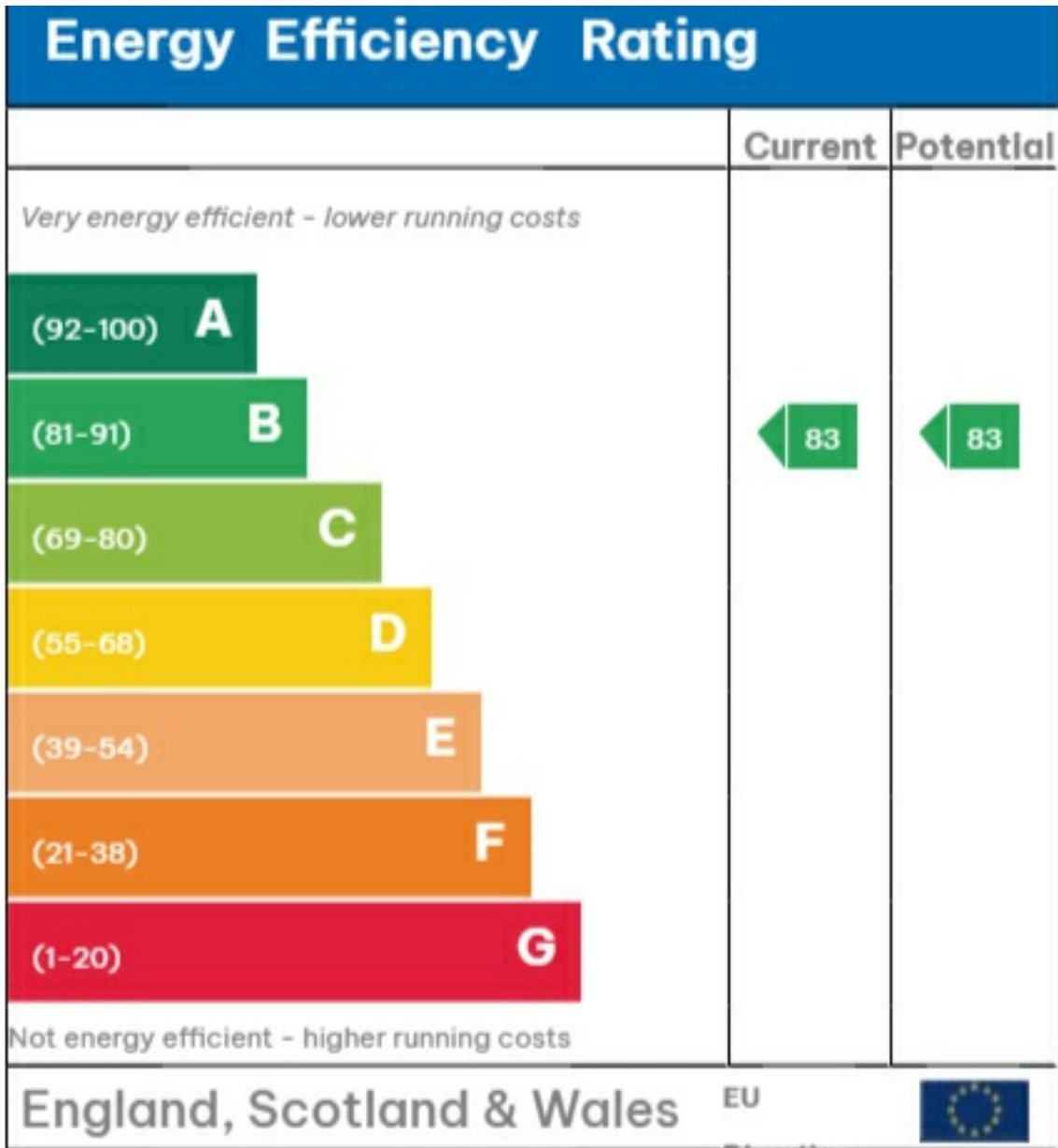
## Viewing

Please contact our Global House Estates Ltd Office on 0207 401 2020 if you wish to arrange a viewing appointment for this property or require further information.

## Disclaimer

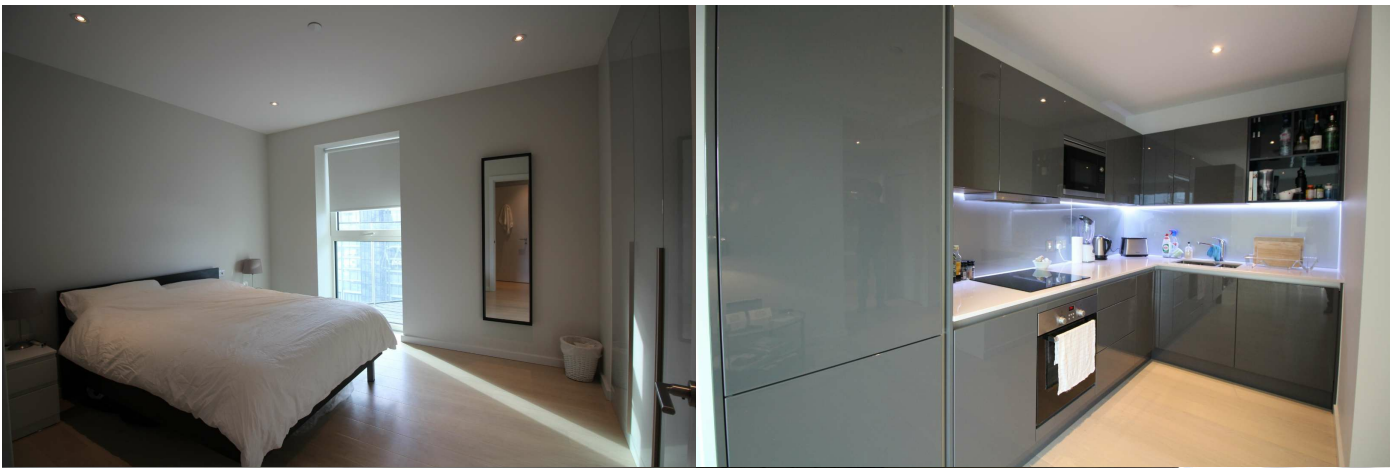
This website provides information about buying, selling, renting UK property. The information is from reliable sources, but we can't guarantee that it's always accurate. There may be mistakes or changes in the information, such as price, availability, leases, or financing. The square footage is also an estimate and should be confirmed by a professional architect or engineer.

# EPC



Directive

2002/91/EC



35a St Georges Road, London,  
SE1 6EW  
+44 (0) 207 401 2020

<https://globalhousestates.com>

Level 24, Lee Garden One,  
33 Hysan Ave, Causeway Bay,  
Hong Kong  
+852 3963 8411