

0247 401 2020 | enquiries@globalhousestates.com

GARDEN ROW, ELEPHANT AND CASTLE, LONDON

£2,050.00



FOR LET



- Excellent location
- Modern interior
- Two double bedrooms
- Furnished



Property Description

Introducing a well-maintained two-bedroom flat in the vibrant neighbourhood of Elephant and Castle. This bright and airy home features large windows that fill the space with natural light, creating a warm and welcoming atmosphere. The property includes a modern bathroom with a shower and a generously sized living area, perfect for relaxation or entertaining.

Ideally located just a 3-minute walk from Elephant and Castle tube and train stations, and within easy reach of Waterloo and numerous bus routes, it offers exceptional transport connections.

Residents will also enjoy the abundance of local amenities, including trendy cafés, restaurants, shops, and cultural attractions right on their doorstep. With its prime location and lively surroundings, this flat offers a dynamic and convenient city lifestyle.

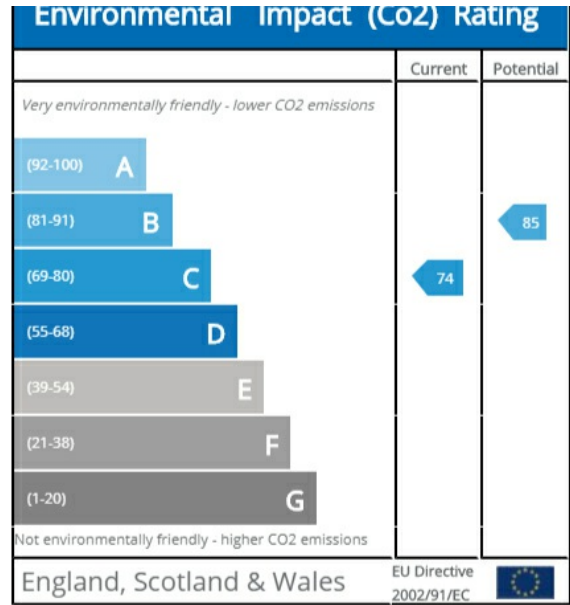
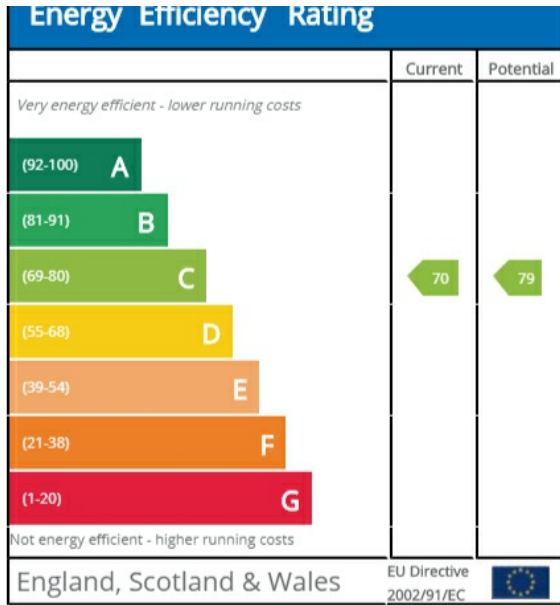
Viewing

Please contact our Global House Estates Ltd Office on 0207 401 2020 if you wish to arrange a viewing appointment for this property or require further information.

Disclaimer

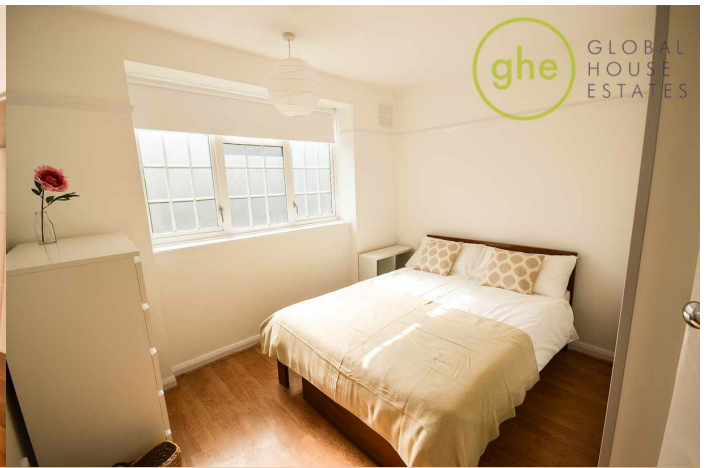
This website provides information about buying, selling, renting UK property. The information is from reliable sources, but we can't guarantee that it's always accurate. There may be mistakes or changes in the information, such as price, availability, leases, or financing. The square footage is also an estimate and should be confirmed by a professional architect or engineer.

EPC





ghe GLOBAL HOUSE ESTATES



ghe GLOBAL HOUSE ESTATES



ghe GLOBAL HOUSE ESTATES



ghe GLOBAL HOUSE ESTATES



ghe GLOBAL HOUSE ESTATES