

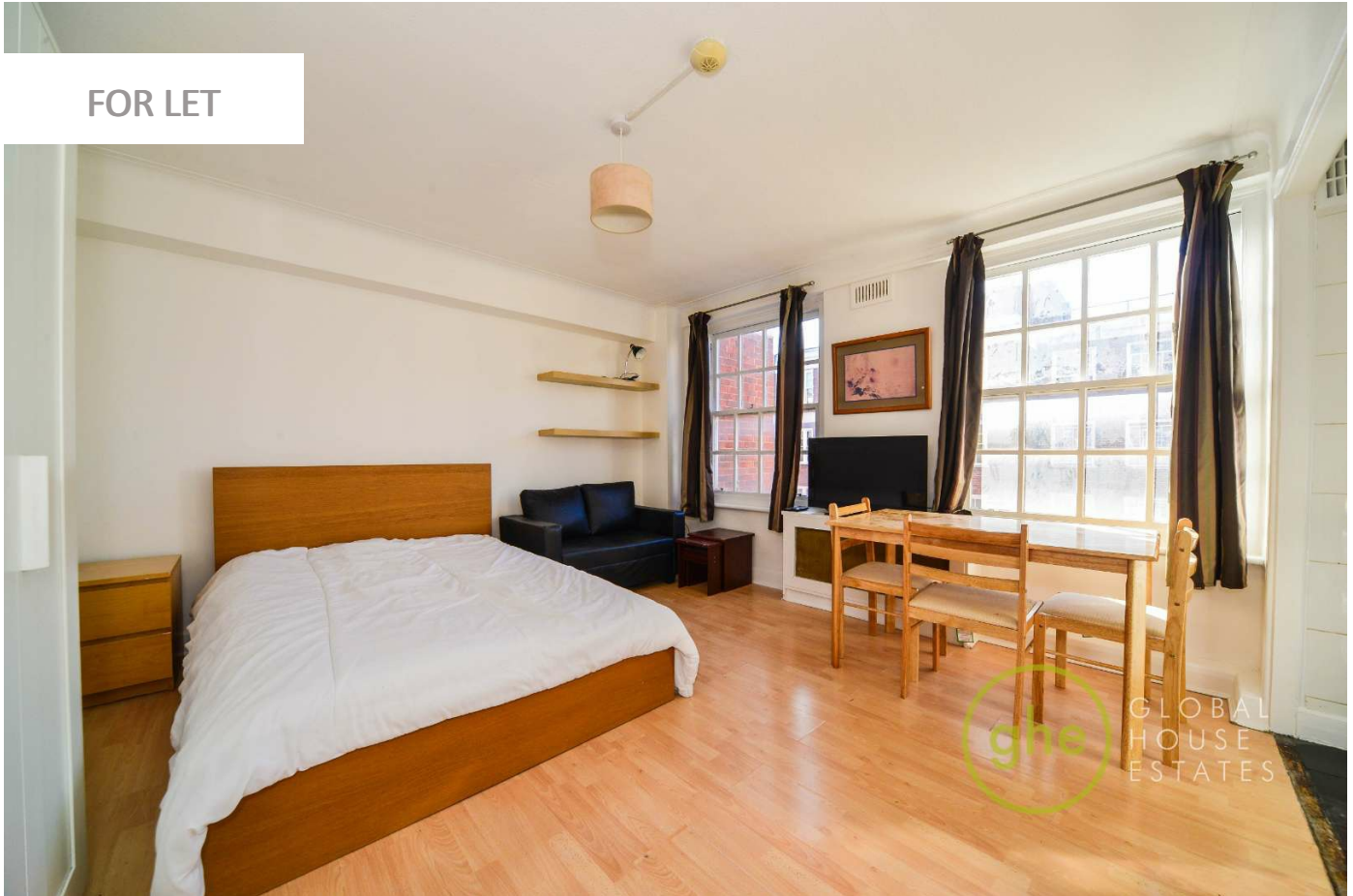
0247 401 2020 | enquiries@globalhousestates.com

PARK WEST PLACE, MARBLE ARCH, LONDON

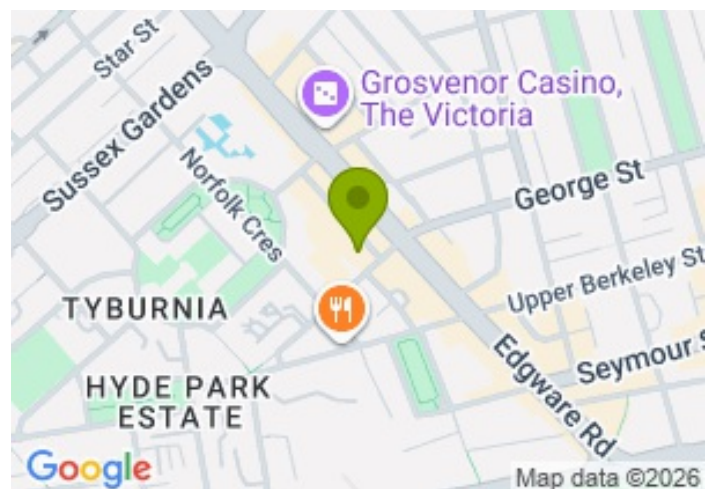
£1,700.00



FOR LET



- Studio apartment
- Heating and hot water is included
- 24 Hour concierge
- Secure entry
- Moments from Hyde Park



## Property Description

This elegant studio apartment is located within a well-maintained, portered building, benefiting from 24-hour concierge service, secure entry, and a meticulously, carefully managed communal setting. The apartment is generously proportioned, located on the 7th floor, featuring a bright open-plan design that maximises natural light and provides a flexible living space suited to both relaxation and entertaining. Heating and hot water is included in the rent

Park West Place enjoys an exceptional location just moments from the open green spaces of Hyde Park, the charming boutiques of Connaught Village, and the renowned shopping destinations of Oxford Street and Bond Street. Residents benefit from a unique blend of city convenience and nearby tranquillity, with many of London's most iconic landmarks within easy walking distance.

The property is conveniently situated within a short walk of Marble Arch (approximately 9 minutes), Edgware Road (9 minutes), and Paddington Station (14 minutes), providing excellent transport connections, including access to the Heathrow Express and mainline rail services to the South West of England.

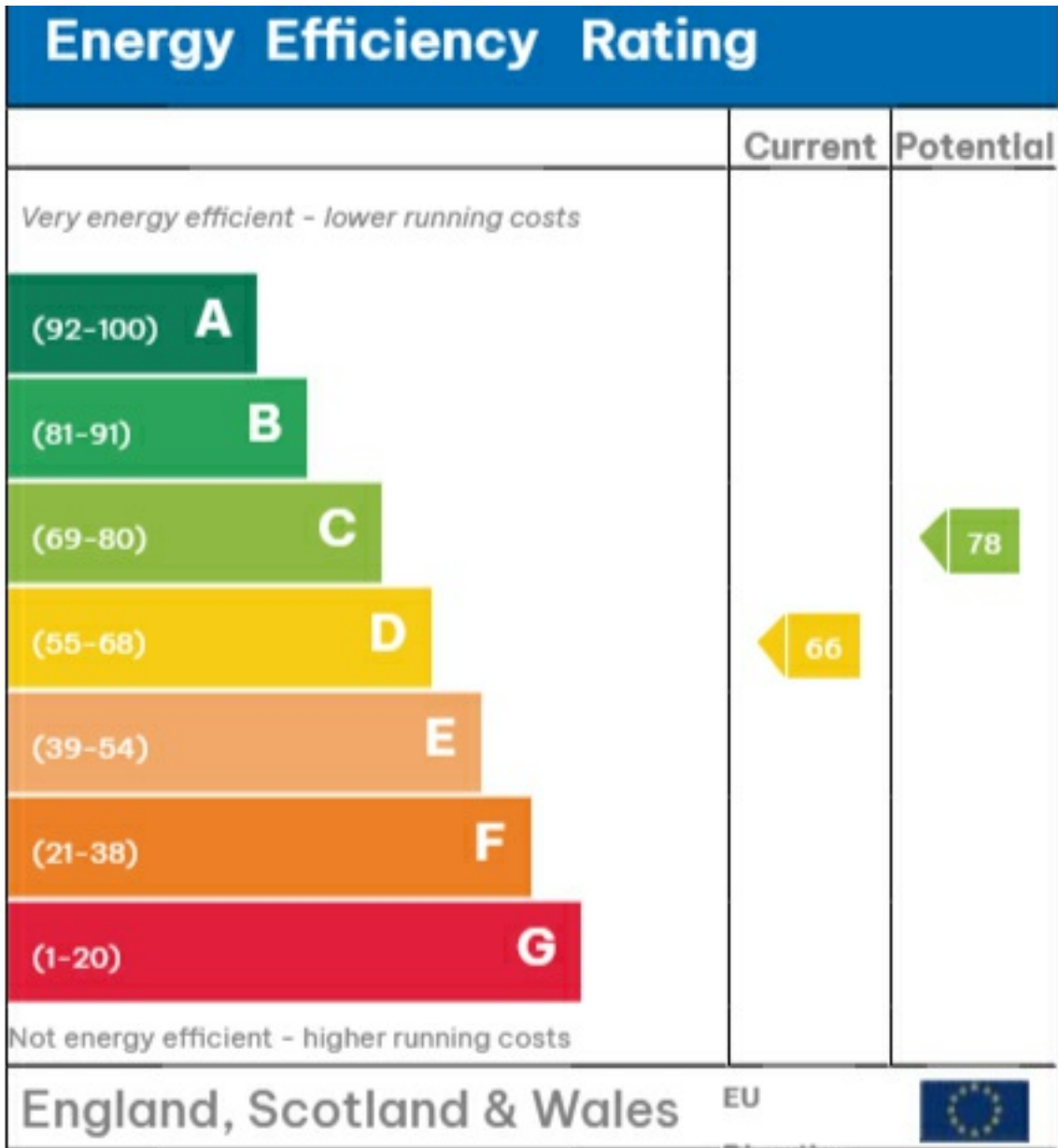
## Viewing

Please contact our Global House Estates Ltd Office on 0207 401 2020 if you wish to arrange a viewing appointment for this property or require further information.

## Disclaimer

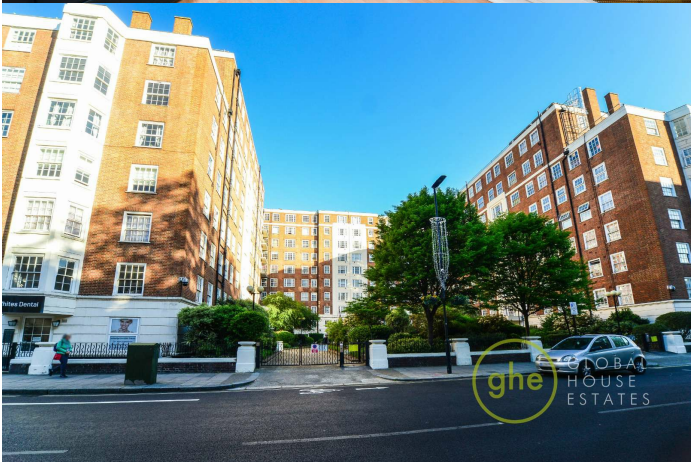
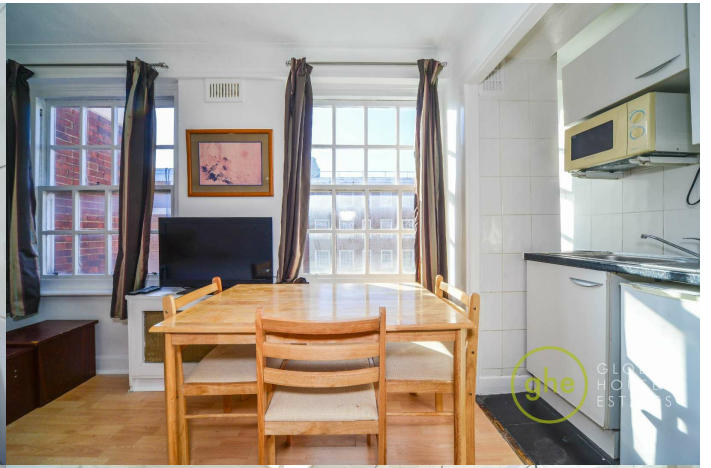
This website provides information about buying, selling, renting UK property. The information is from reliable sources, but we can't guarantee that it's always accurate. There may be mistakes or changes in the information, such as price, availability, leases, or financing. The square footage is also an estimate and should be confirmed by a professional architect or engineer.

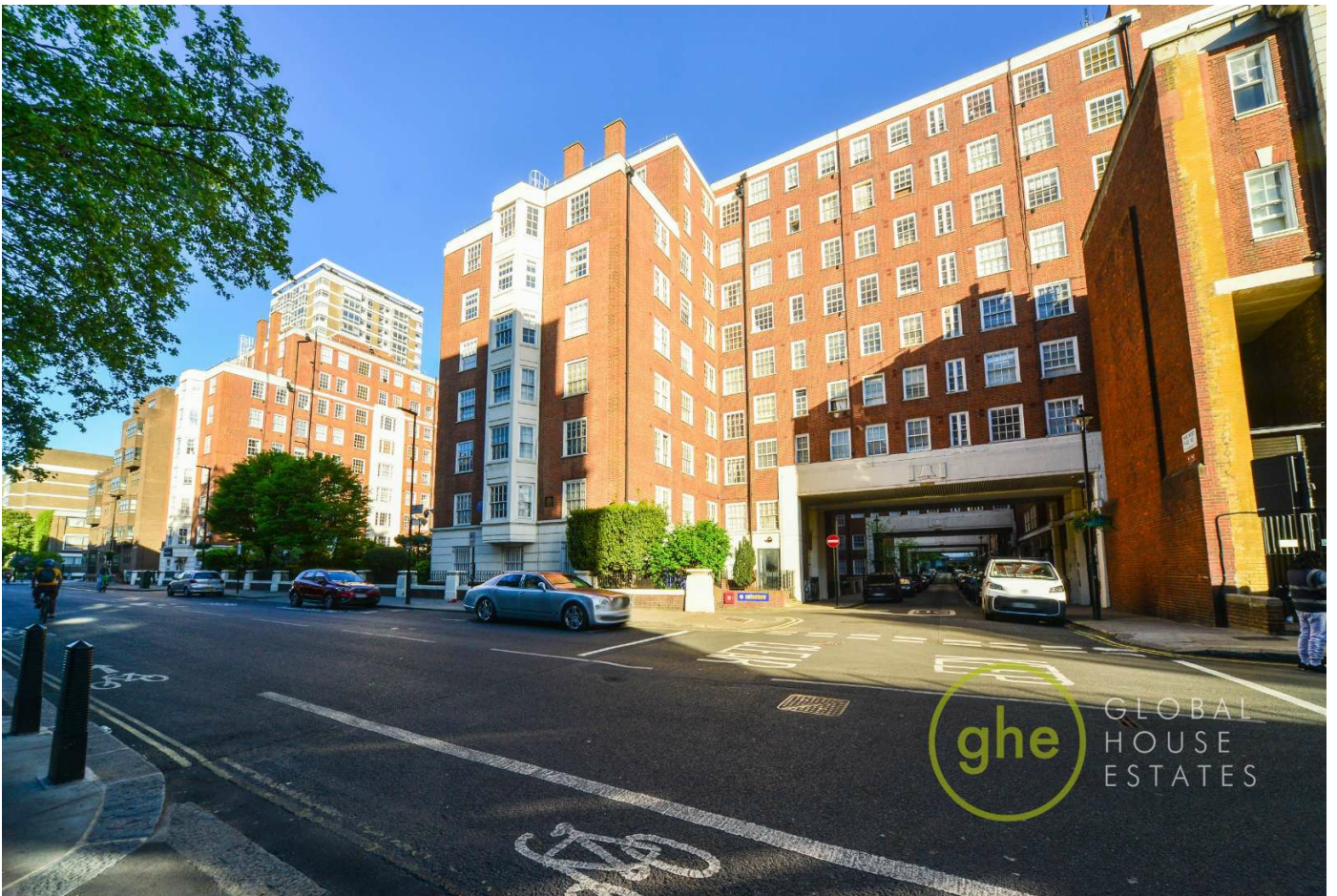
# EPC



Directive

2002/91/EC





35a St Georges Road, London,  
SE1 6EW  
+44 (0) 207 401 2020

<https://globalhouseestates.com>

Level 24, Lee Garden One,  
33 Hysan Ave, Causeway Bay,  
Hong Kong  
+852 3963 8411