

0247 401 2020 | enquiries@globalhousestates.com

GOODWIN CLOSE, BERMONDSEY, LONDON

£1,800.00



FOR LET



- 1st Floor Apartment
- Two bedrooms (one double and one single)
- Wood floors throughout
- Spacious lounge
- Close to transport



Property Description

We are delighted to present a 1st floor two bedroom apartment located close to Bermondsey Tube and London Bridge station. The property comprises of a spacious living room, modern fully fitted kitchen, shower over bath and wood flooring throughout. Bermondsey offers a great selection of shops, bars and amenities.

London Bridge station is also walking distance and benefits from excellent transport links via Jubilee, Northern, mainline train lines, and bus services. Borough High Street, Shad Thames, Borough Market, and the Southbank are all accessible on foot.

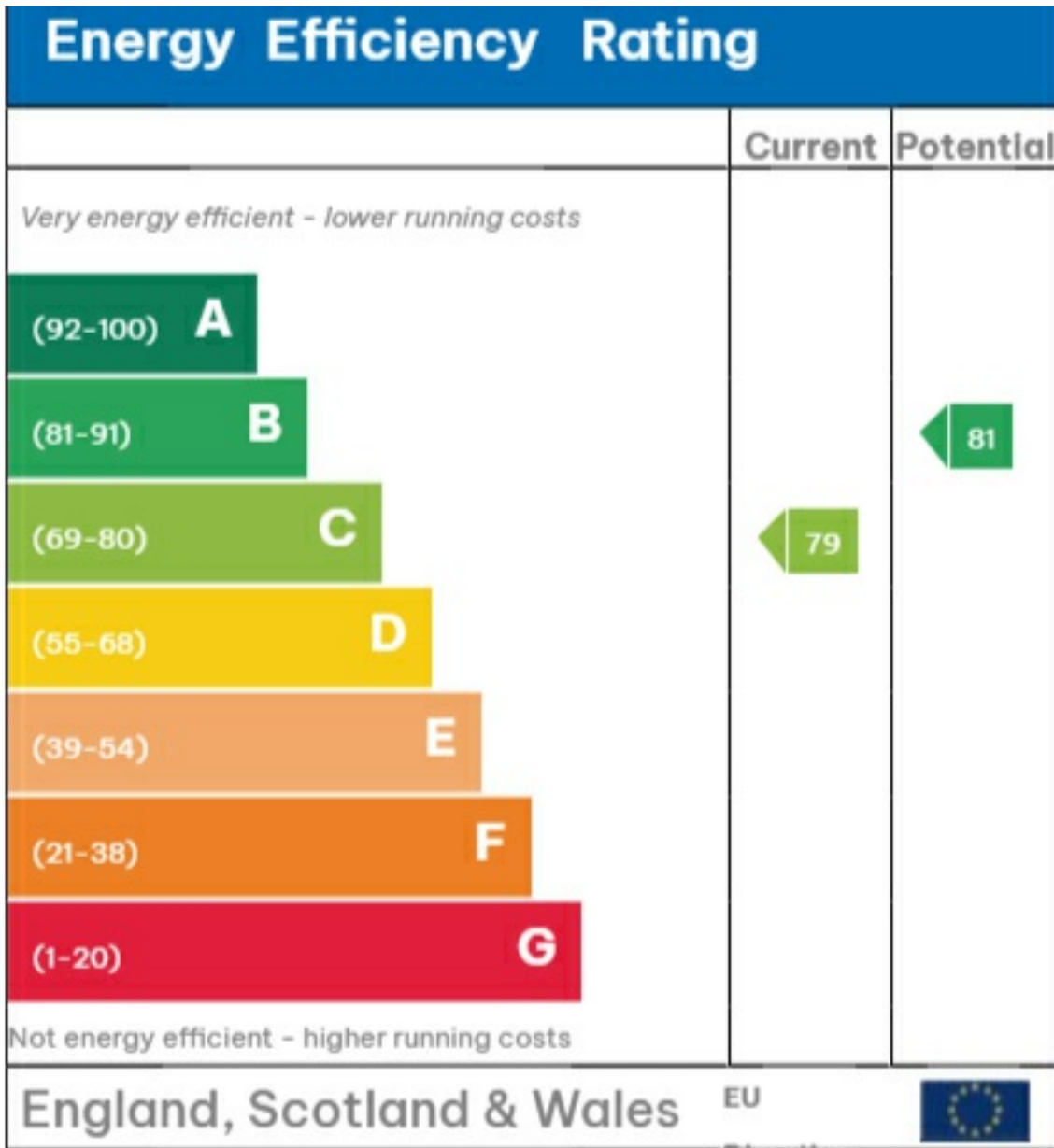
Viewing

Please contact our Global House Estates Ltd Office on 0207 401 2020 if you wish to arrange a viewing appointment for this property or require further information.

Disclaimer

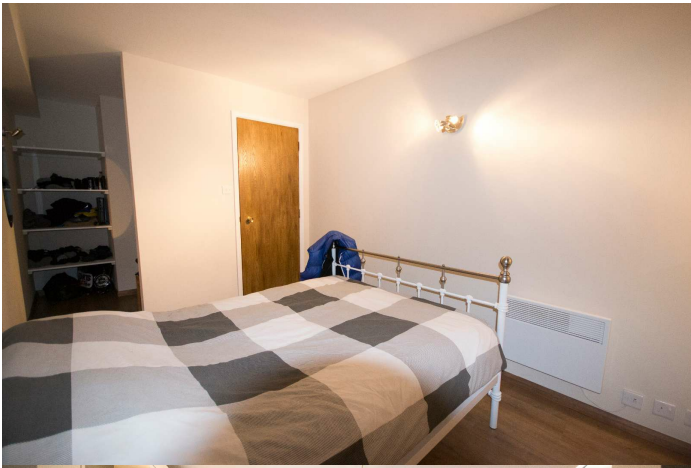
This website provides information about buying, selling, renting UK property. The information is from reliable sources, but we can't guarantee that it's always accurate. There may be mistakes or changes in the information, such as price, availability, leases, or financing. The square footage is also an estimate and should be confirmed by a professional architect or engineer.

EPC



Directive

2002/91/EC



35a St Georges Road, London,
SE1 6EW
+44 (0) 207 401 2020

<https://globalhousestates.com>

Level 24, Lee Garden One,
33 Hysan Ave, Causeway Bay,
Hong Kong
+852 3963 8411