

0247 401 2020 | enquiries@globalhousestates.com

## RUSHGROVE MEWS, WOOLWICH, LONDON

£4,450.00



FOR LET



- 4 Bedroom House
- Furnished
- 3 Bathrooms (2 en-suites)
- Off Street Parking
- Gated Mews
- Good Sized Rear Garden
- Wooden Floors
- Stunning Kitchen



## Property Description

Rare to the market this four double bedroom property in the heart of Woolwich. Located within an exclusive private, gated mews development of only six individual, stylish houses. The property has been architecturally designed to the highest standards and offers a unique, completely private home in a peaceful, tranquil location. The property benefits from access to a beautiful boating lake, just moments from the property with beautiful walks, around the lake, where you can see the abundant wildlife within this unique setting. The house extends to over 3000 square feet internally.

The property is available now, Local transport links including Woolwich Dockyard Overground and the Woolwich Arsenal DLR service are within a 10 minute walk.

## Viewing

Please contact our Global House Estates Ltd Office on 0207 401 2020 if you wish to arrange a viewing appointment for this property or require further information.

## Disclaimer

This website provides information about buying, selling, renting UK property. The information is from reliable sources, but we can't guarantee that it's always accurate. There may be mistakes or changes in the information, such as price, availability, leases, or financing. The square footage is also an estimate and should be confirmed by a professional architect or engineer.

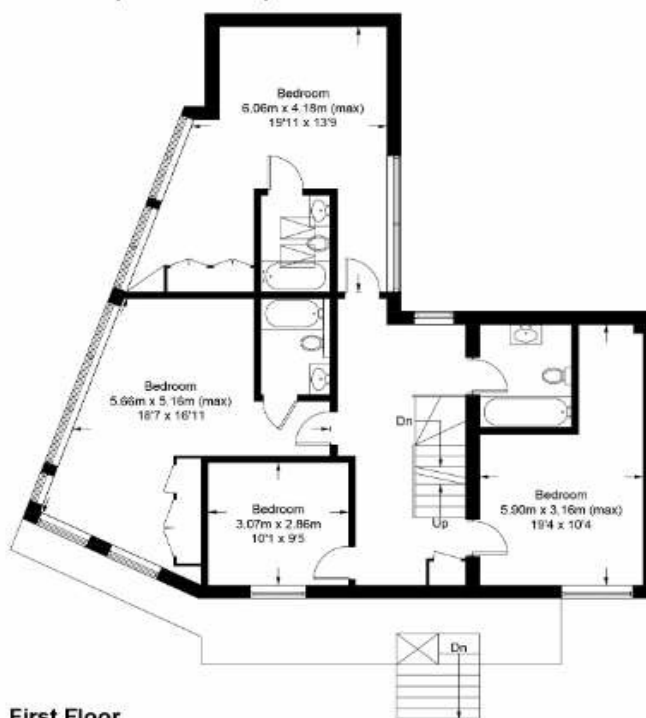
# Floor plan

## Rushgrove Street, SE18

Approximate Gross Internal Area = 189.6 sq m / 2041 sq ft

Basement = 37.8 sq m / 407 sq ft

Total = 227.4 sq m / 2448 sq ft



First Floor



Ground Floor



Basement

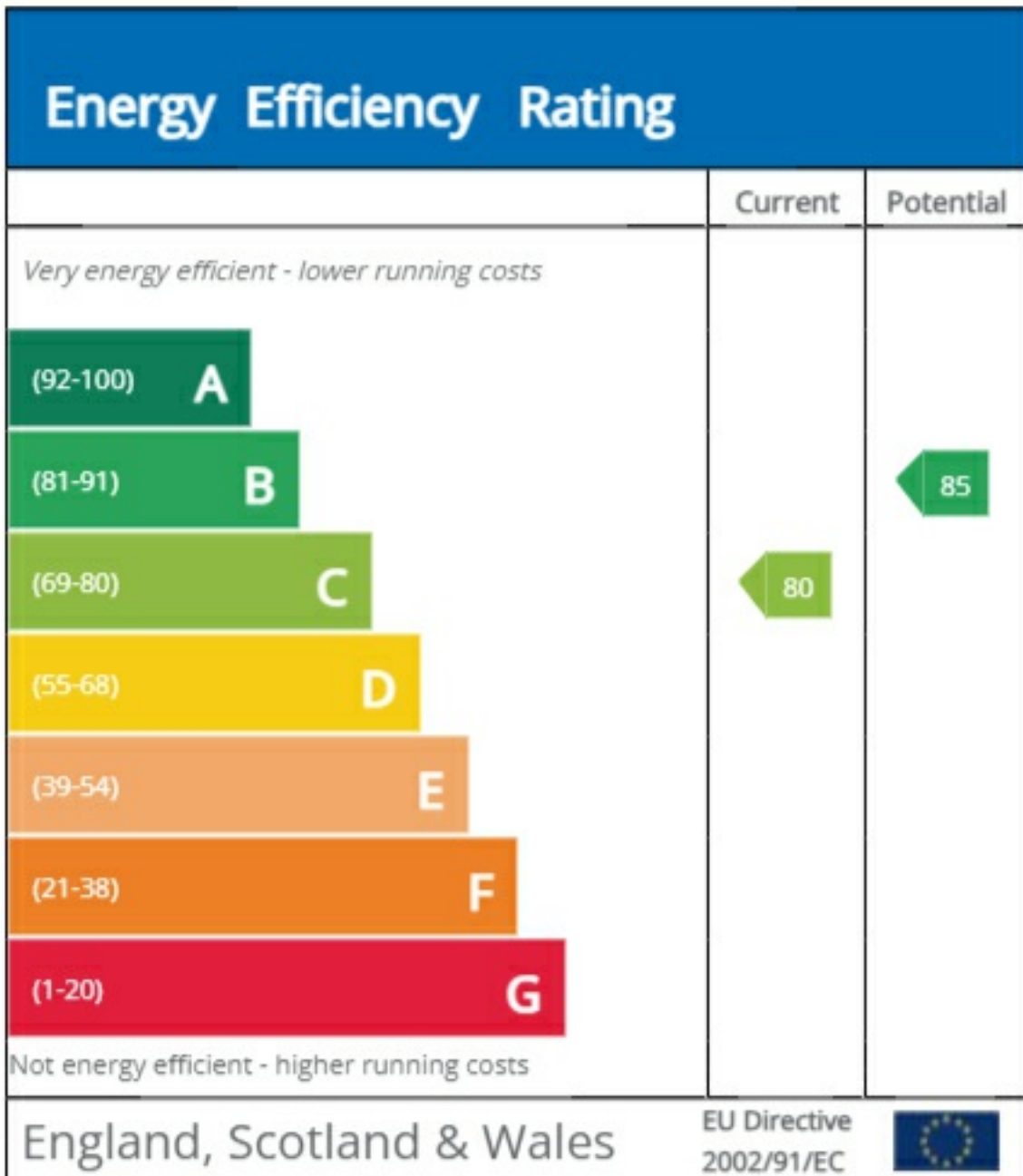
This floor plan is for representation purposes only and is not drawn to scale.

**The Gross Internal Area includes outbuildings shown on the plan.**

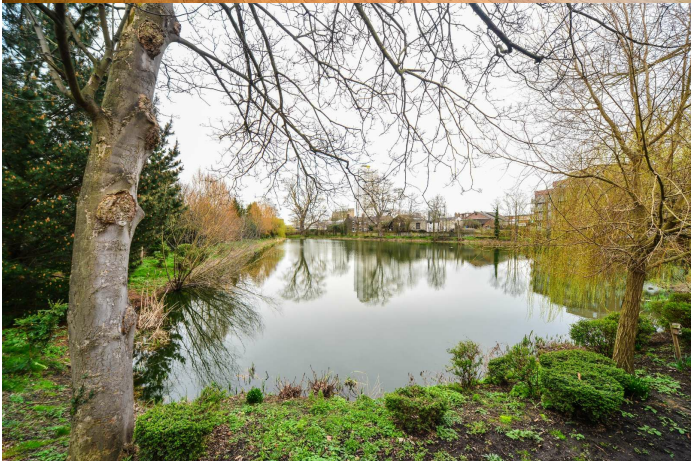
Whilst every attempt has been made to ensure the accuracy of the plan measurements of doors, windows and rooms are approximate only and should be checked before making any decisions reliant upon them.

Copyright Bespokeplans.co.uk (ID1054057)

# EPC









35a St Georges Road, London,  
SE1 6EW  
+44 (0) 207 401 2020

<https://globalhouseestates.com>

Level 24, Lee Garden One,  
33 Hysan Ave, Causeway Bay,  
Hong Kong  
+852 3963 8411