

0247 401 2020 | enquiries@globalhousestates.com

151 TOWER BRIDGE ROAD, BERMONDSEY, LONDON

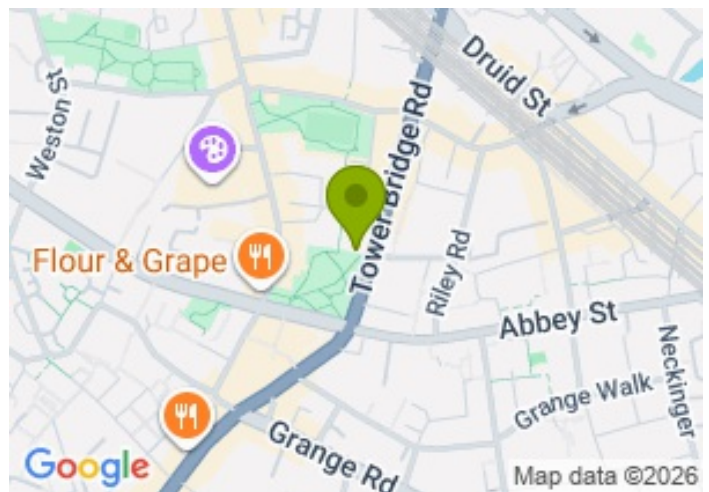
£765.00



FOR LET



- Two double bedroom, 5th floor apartment
- Modern Galliard Homes development
- Spacious private terrace with tree top views
- Located near to Bermondsey Street and London Bridge
- Concierge on site



Property Description

This modern two-bedroom apartment on the 5th floor of a stunning Galliard Homes development is bright and airy, with beautiful treetop views from its spacious 202 sq. ft. private terrace. The reception area features engineered wood floors and flows seamlessly into a sleek, integrated kitchen. There's plenty of storage throughout, with built-in wardrobes in both bedrooms, and a stylish, contemporary bathroom. The apartment comes fully furnished with a luxury furniture package. The development offers concierge service, plus on-site restaurants and a Planet Organic store. Bermondsey Street and Tanner Street Park are just a short walk away, with London Bridge Station only 10 minutes on foot and the Thames close by.

Viewing

Please contact our Global House Estates Ltd Office on 0207 401 2020 if you wish to arrange a viewing appointment for this property or require further information.

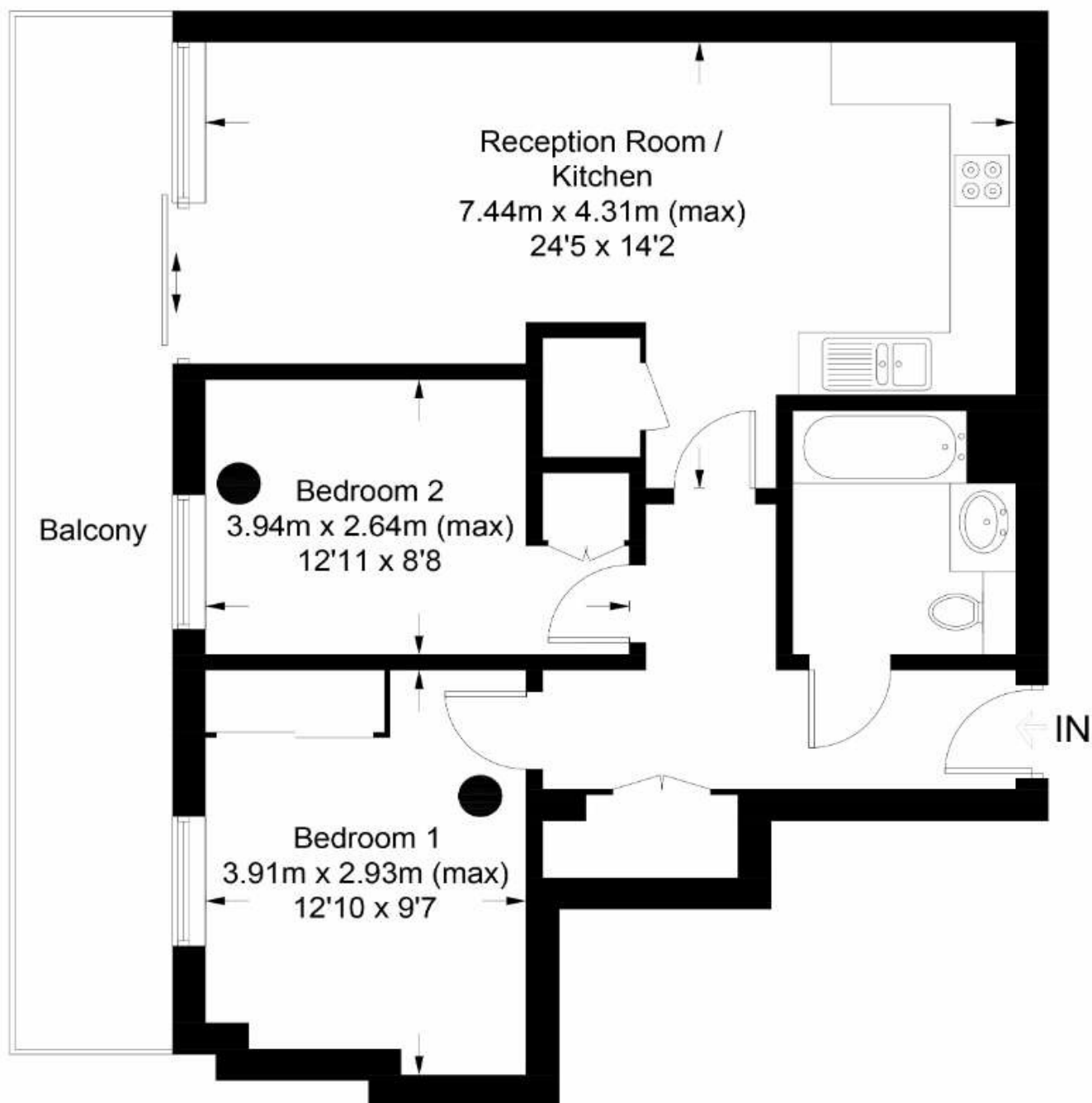
Disclaimer

This website provides information about buying, selling, renting UK property. The information is from reliable sources, but we can't guarantee that it's always accurate. There may be mistakes or changes in the information, such as price, availability, leases, or financing. The square footage is also an estimate and should be confirmed by a professional architect or engineer.

Floor plan

Newhams Yard, Tower Bridge Road, SE1

Approximate Gross Internal Area = 63.2 sq m / 680 sq ft



Fifth Floor

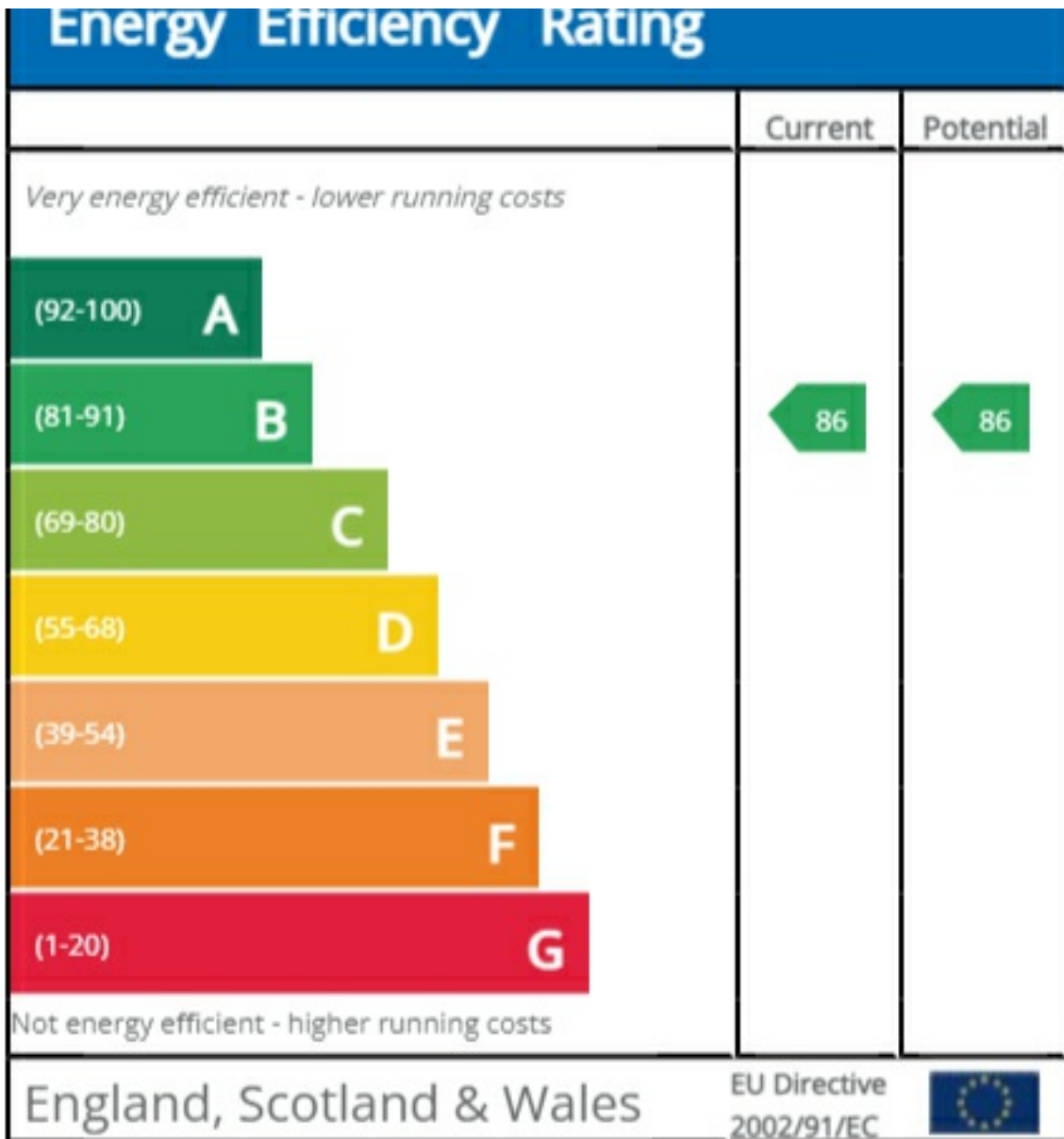
This floor plan is for representation purposes only and is not drawn to scale.

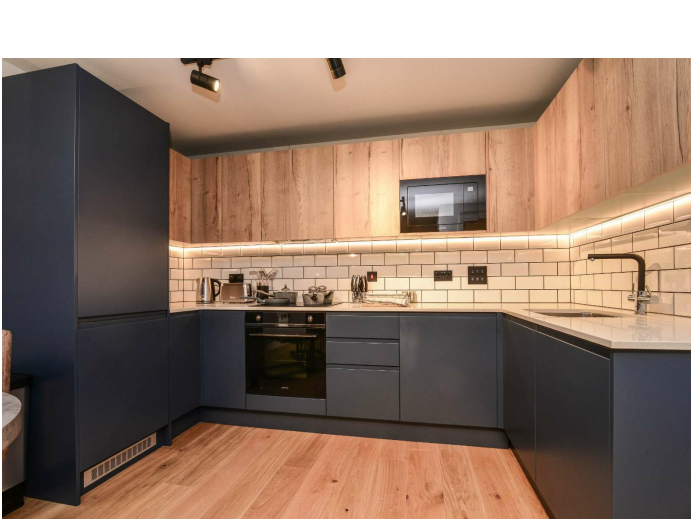
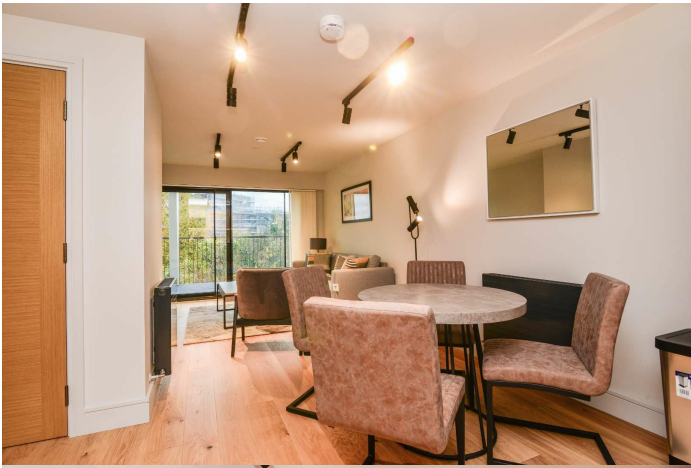
The Gross Internal Area includes outbuildings shown on the plan.

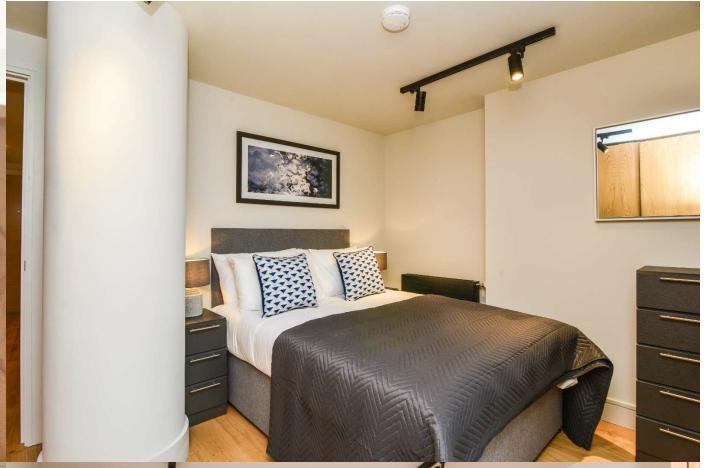
Whilst every attempt has been made to ensure the accuracy of the plan measurements of doors, windows and rooms are approximate only and should be checked before making any decisions reliant upon them.

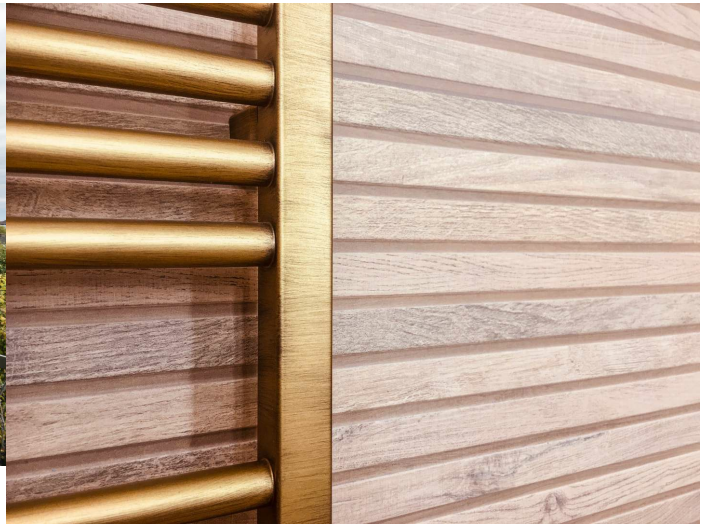
Copyright Bespokeplans.co.uk (ID812825)

EPC









35a St Georges Road, London,
SE1 6EW
+44 (0) 207 401 2020

<https://globalhouseestates.com>

Level 24, Lee Garden One,
33 Hysan Ave, Causeway Bay,
Hong Kong
+852 3963 8411