

0247 401 2020 | enquiries@globalhousestates.com

CREST VIEW DRIVE, ORPINGTON, LONDON

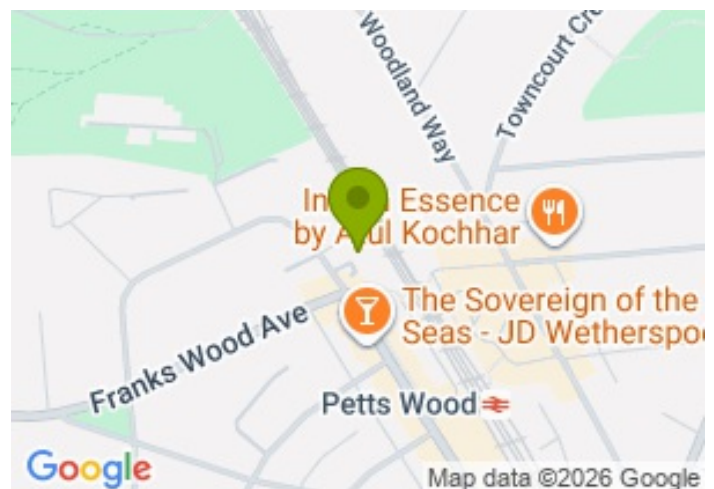
£392.00



FOR LET



- Two double bedroom modern apartment
- Two Bathrooms
- Close to Petts Wood Station
- Near Parks and ammenities
- Available Now



Property Description

A smart and spacious ground floor apartment featuring two double bedrooms and two bathrooms. Situated in a modern development ideally located for Petts Wood Station and close to various shops and amenities, the property is bright and well-presented with wooden floors and carpeted bedrooms. It offers a generously sized open-plan, integrated modern kitchen and reception room, two double bedrooms, an en suite shower room, and a main bathroom.

The area boasts a wide selection of shops, amenities, and the open spaces of Jubilee Park and the Hawkwood Estate. Available now, unfurnished.

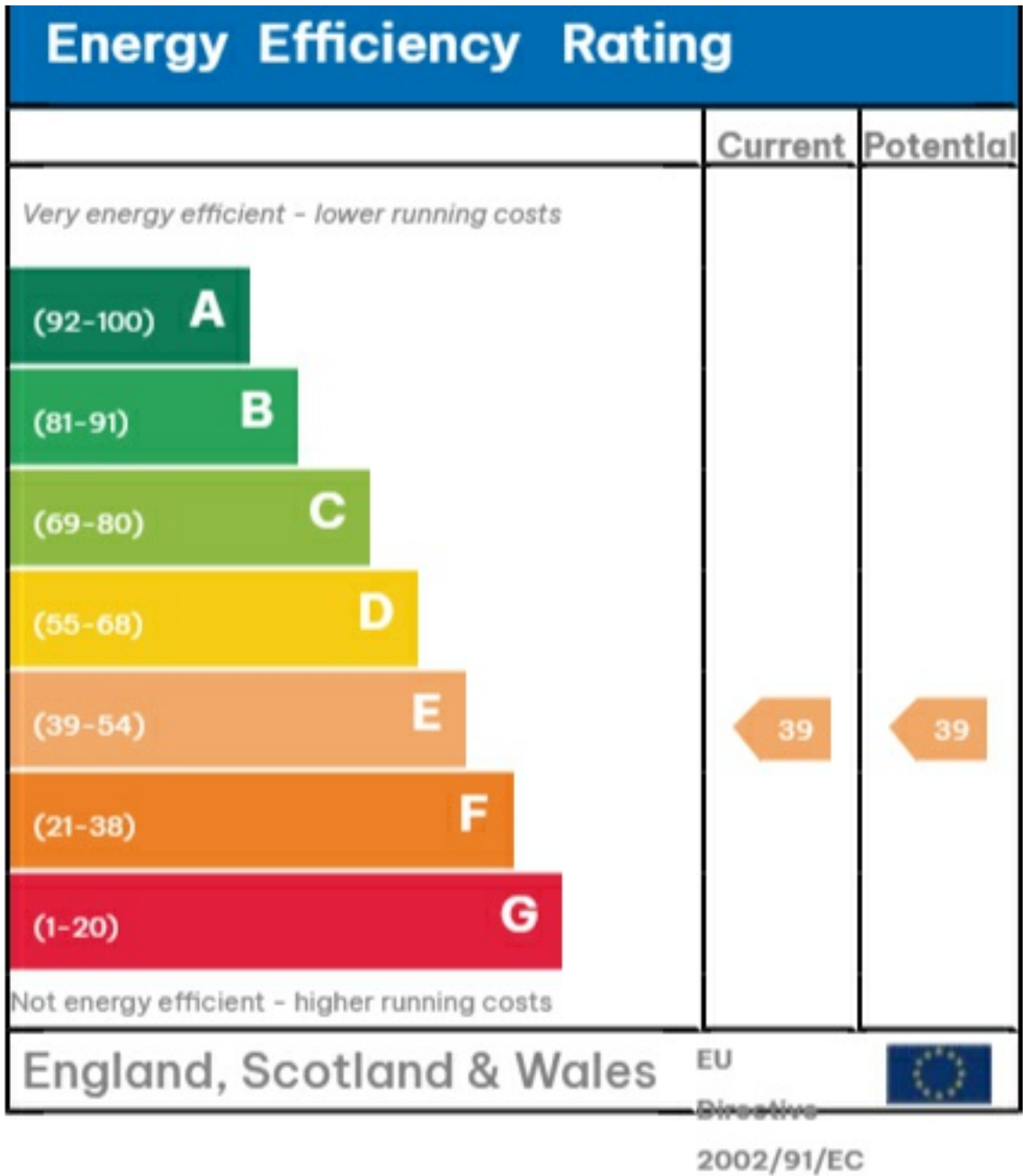
Viewing

Please contact our Global House Estates Ltd Office on 0207 401 2020 if you wish to arrange a viewing appointment for this property or require further information.

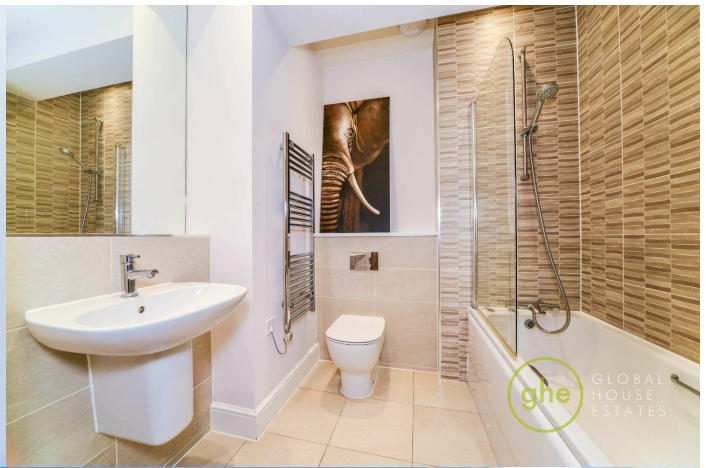
Disclaimer

This website provides information about buying, selling, renting UK property. The information is from reliable sources, but we can't guarantee that it's always accurate. There may be mistakes or changes in the information, such as price, availability, leases, or financing. The square footage is also an estimate and should be confirmed by a professional architect or engineer.

EPC







35a St Georges Road, London,
SE1 6EW
+44 (0) 207 401 2020

<https://globalhouseestates.com>

Level 24, Lee Garden One,
33 Hysan Ave, Causeway Bay,
Hong Kong
+852 3963 8411