

0247 401 2020 | enquiries@globalhousestates.com

JAMAICA ROAD, BERMONDSEY, LONDON

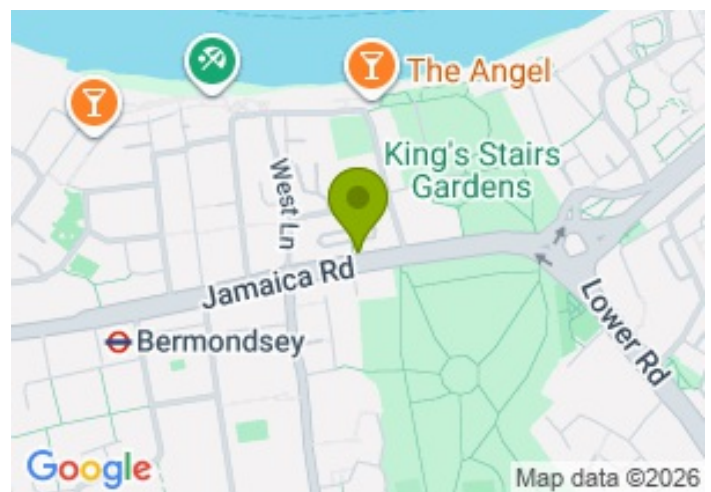
£2,200.00



FOR LET



- Two bedrooms
- Spacious reception
- Stunning recently fitted kitchen
- Balcony
- Moments from Bermondsey tube (Jubilee Line)



Property Description

New to the market is this fantastic 2 bedroom apartment located moments from Bermondsey tube station and the River Thames. The property comprises bright and airy reception with wood floors and feature fireplace, separate modern recently fitted kitchen with plenty of storage, two bedrooms and very spacious family bathroom. It further benefits from private balcony. It is moments from Bermondsey tube station (Jubilee line) and the many river walks that follow along to both Rotherhithe and Tower Bridge. A must see.

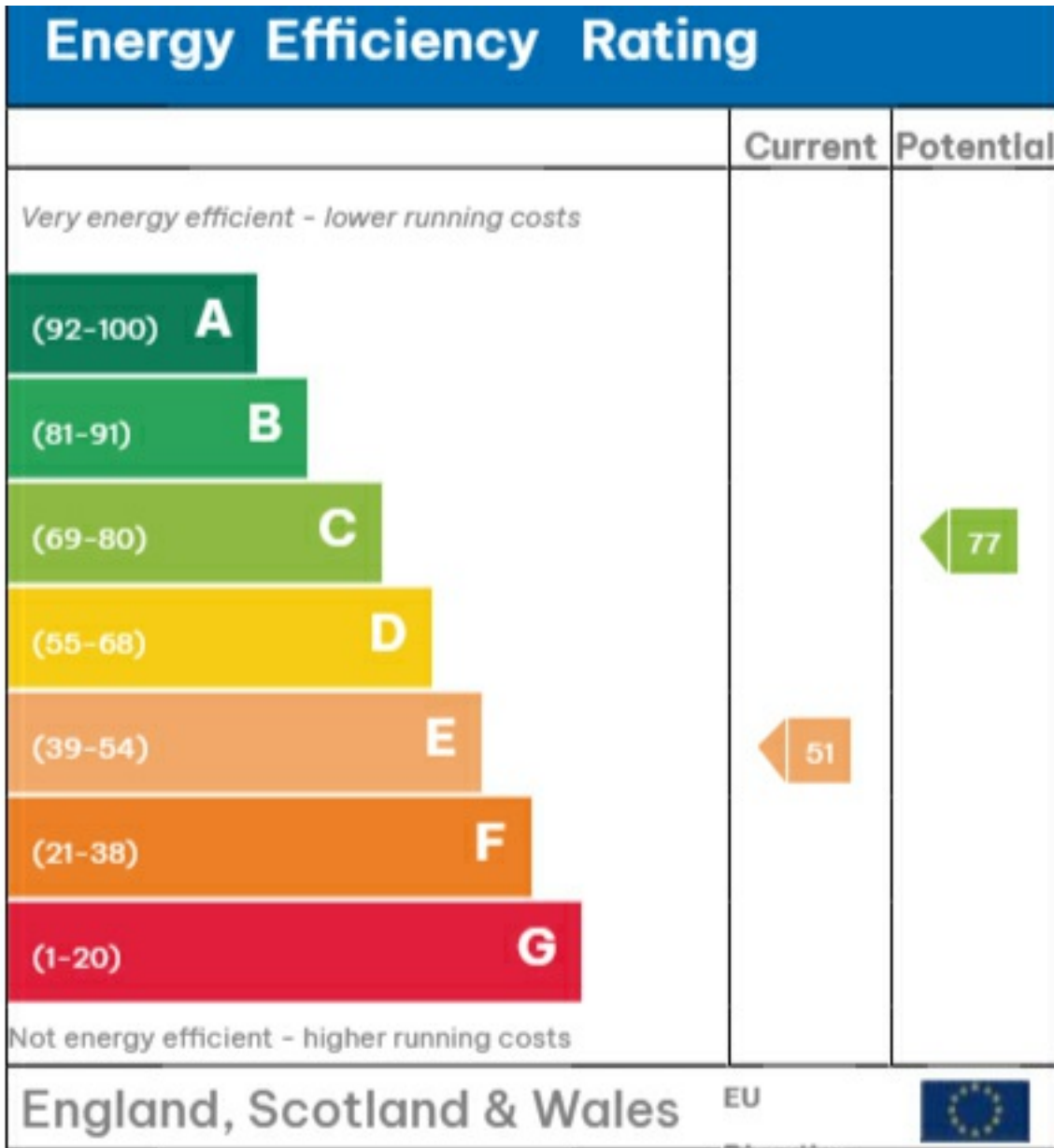
Viewing

Please contact our Global House Estates Ltd Office on 0207 401 2020 if you wish to arrange a viewing appointment for this property or require further information.

Disclaimer

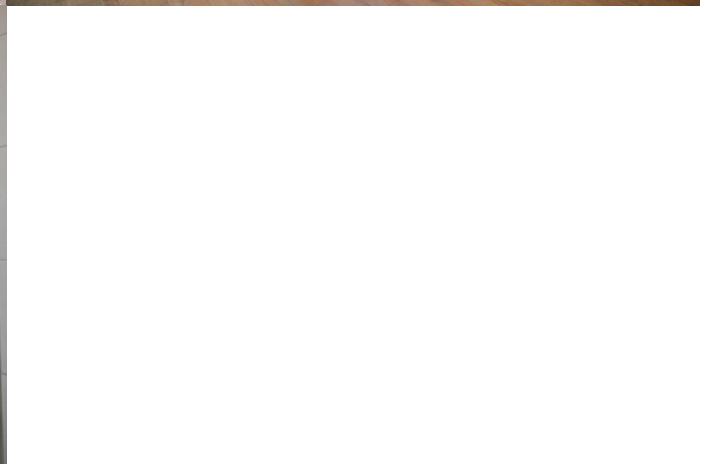
This website provides information about buying, selling, renting UK property. The information is from reliable sources, but we can't guarantee that it's always accurate. There may be mistakes or changes in the information, such as price, availability, leases, or financing. The square footage is also an estimate and should be confirmed by a professional architect or engineer.

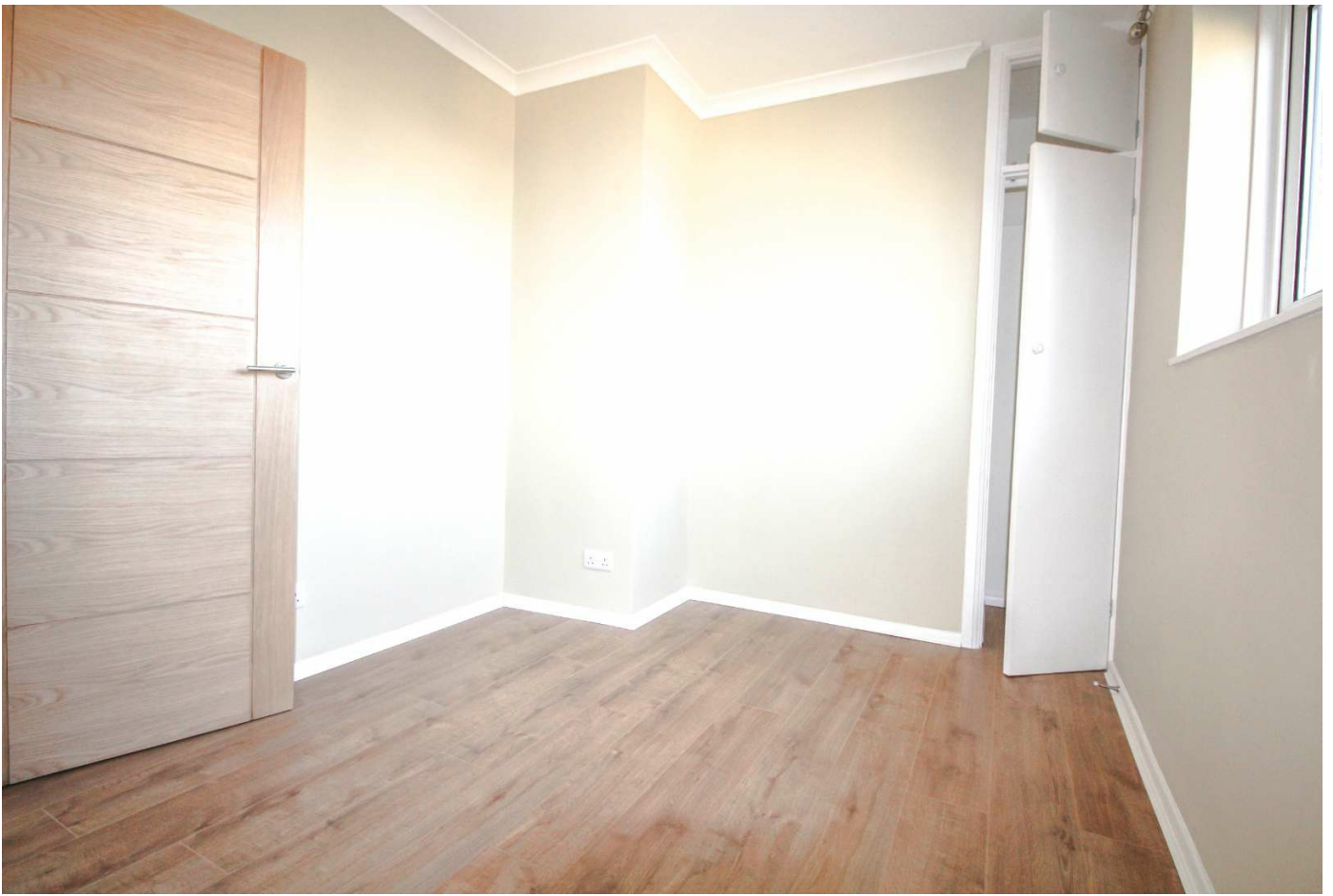
EPC



Directive

2002/91/EC





35a St Georges Road, London,
SE1 6EW
+44 (0) 207 401 2020

<https://globalhouseestates.com>

Level 24, Lee Garden One,
33 Hysan Ave, Causeway Bay,
Hong Kong
+852 3963 8411