

0247 401 2020 | enquiries@globalhouseestates.com

## TELEGRAPH PLACE, TOWER HAMLETS, LONDON

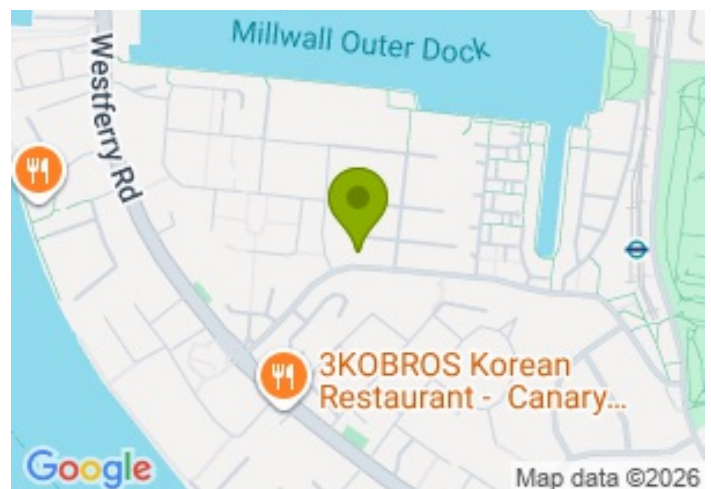
£300,000.00



FOR SALE



- One-bedroom apartment on the top floor (2nd)
- Off-street parking
- Only 0.3 miles to Mudchute DLR station
- Secure development
- Chain free
- Quiet residential area
- Ideal for first-time buyers and investors
- Healthy lease length



## Property Description

Situated on the top (second) floor of a well-maintained, purpose-built development, this bright one-bedroom apartment offers an excellent opportunity for both first-time buyers and investors alike.

Located within a peaceful residential setting, the property features a spacious and light-filled living area with attractive wood flooring, complemented by a semi-open-plan layout that flows into a well-appointed separate kitchen. The generous double bedroom benefits from a large fitted wardrobe, providing ample storage, while a large bathroom and additional hallway storage and attic space enhance the practicality of the home. The property enjoys impressive views from the bedroom window across Millwall Dock towards Canary Wharf.

Residents of this secure development enjoy access to allocated off-street parking and clean, well-kept communal areas. The apartment is offered with vacant possession, making it ready for immediate occupation or rental.

Ideally located just moments from Millwall Outer Dock and the green open spaces of Mudchute Park, the property is also approximately 0.3 miles from Mudchute DLR station. This ensures excellent connectivity to Canary Wharf and the City, making it perfect for commuters. A variety of local shops, supermarkets, and amenities are all within easy reach.

Service charge: £2023 per annum

Ground rent: £300 per annum

Length of lease: 176 years

All data and information set forth on this website regarding real property, for sale, purchase, rental and/or financing, are from sources regarded as reliable. No warranties are made as to the accuracy of any descriptions and/or other details and such information is subject to errors, omissions, changes of price, tenancies, commissions, prior sales, leases or financing, or withdrawal without notice. Square footages are approximate and may be verified by consulting a professional architect or engineer.

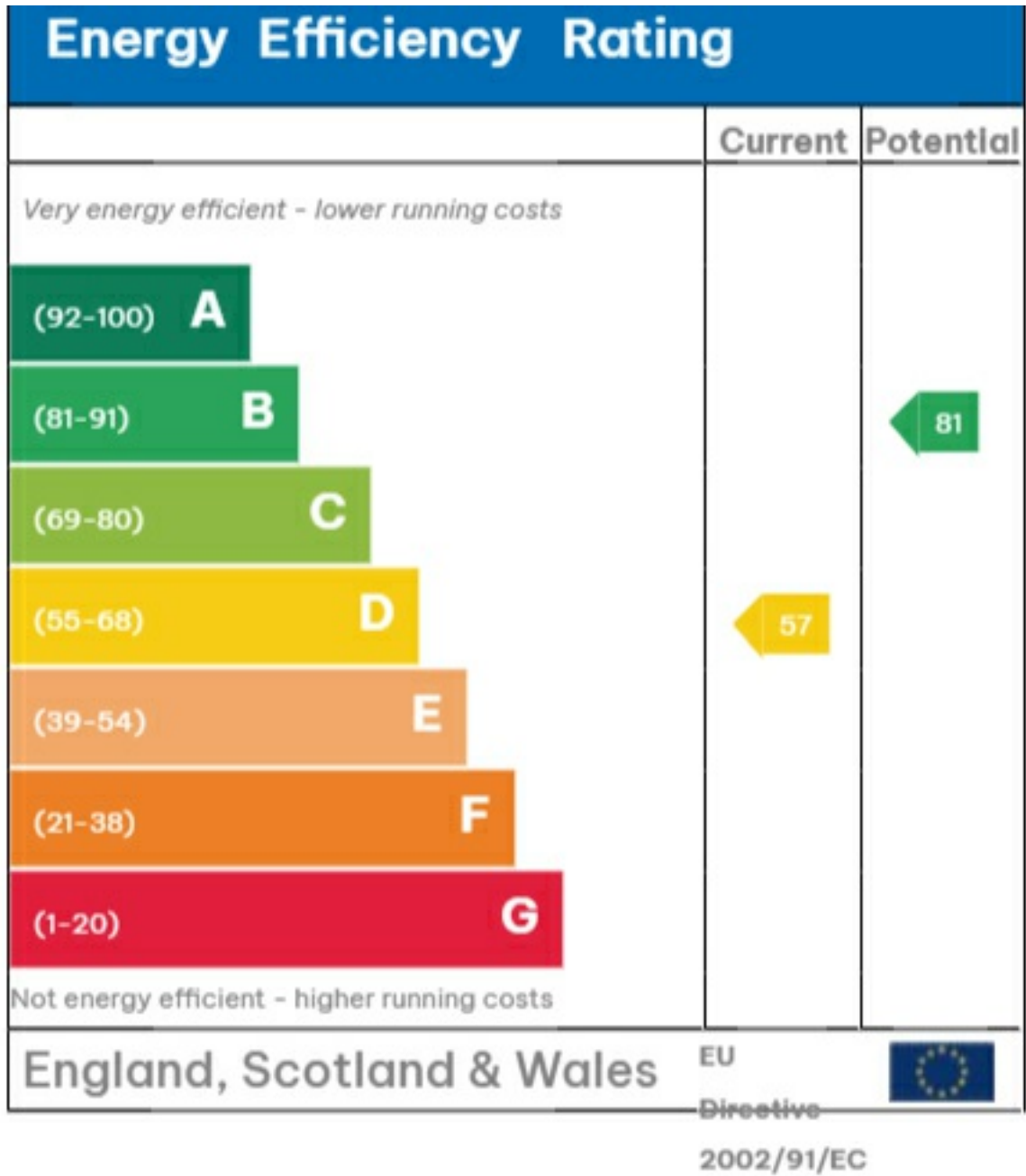
## Viewing

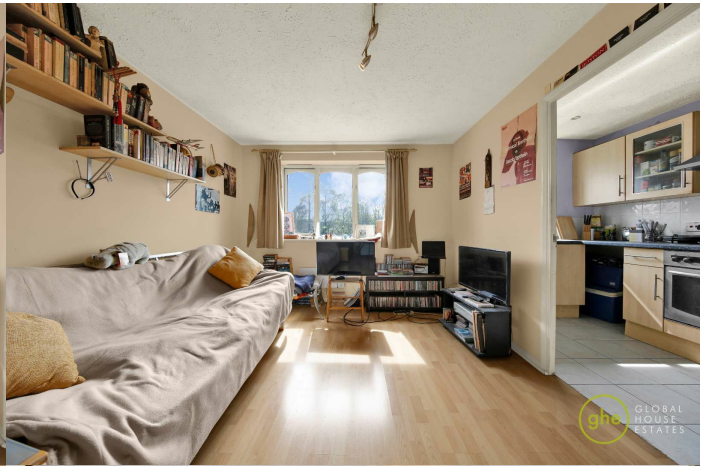
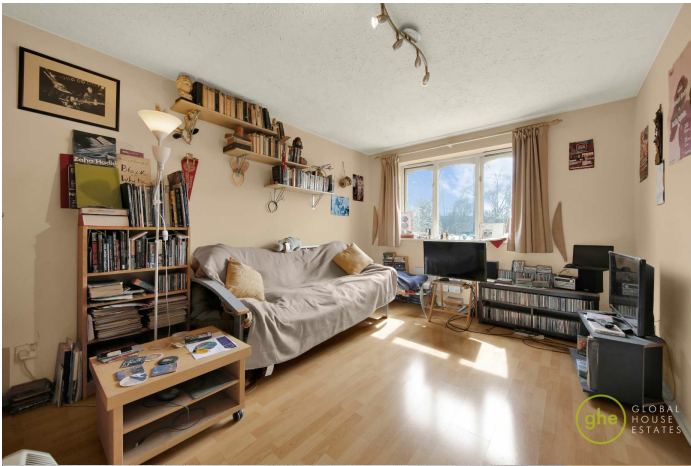
Please contact our Global House Estates Ltd Office on 0207 401 2020 if you wish to arrange a viewing appointment for this property or require further information.

## Disclaimer

This website provides information about buying, selling, renting UK property. The information is from reliable sources, but we can't guarantee that it's always accurate. There may be mistakes or changes in the information, such as price, availability, leases, or financing. The square footage is also an estimate and should be confirmed by a professional architect or engineer.

# EPC







35a St Georges Road, London,  
SE1 6EW  
+44 (0) 207 401 2020

<https://globalhouseestates.com>

Level 24, Lee Garden One,  
33 Hysan Ave, Causeway Bay,  
Hong Kong  
+852 3963 8411