

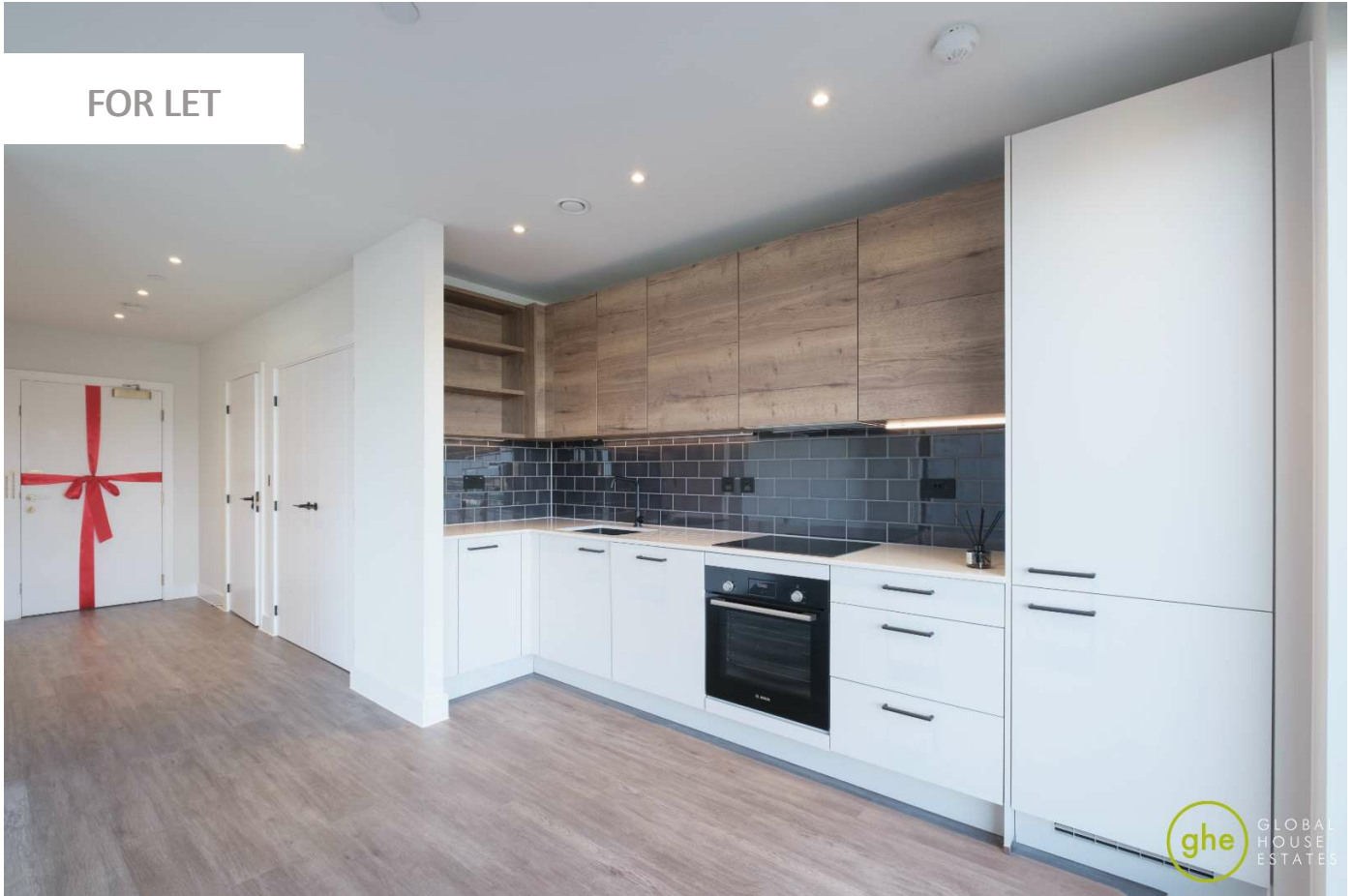
0247 401 2020 | enquiries@globalhouseestates.com

CURZON WHARF, GLASSWATER LOCKS, BIRMINGHAM

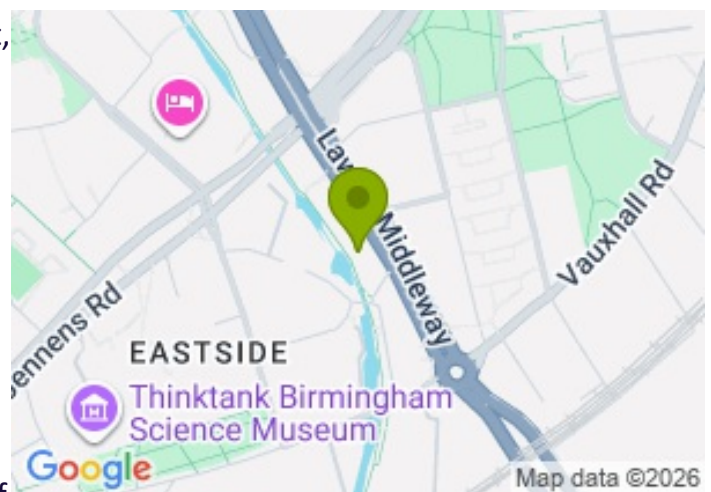
£1,000.00



FOR LET



- Brand New Home - One bedroom apartment, unfurnished
- Full access to a 24-hour concierge
- State-of-the-art gym, cinema room, games room, and residents' business lounge
- Fully fitted kitchen with high-quality integrated appliances
- Large windows providing excellent natural light
- Prime city location within walking distance of business district



- Close to transport links, shops, restaurants, and local amenities
- Available now

Property Description

Brand new A stylish and contemporary one-bedroom apartment located within the sought-after Curzon Wharf development at Glasswater Locks, right in the heart of Birmingham's vibrant city centre.

This beautifully presented property offers a bright and spacious open-plan living and kitchen area, designed with modern living in mind. The kitchen is fully fitted with high-quality integrated appliances and sleek finishes, seamlessly flowing into a comfortable lounge space ideal for both relaxing and entertaining. Large windows allow for plenty of natural light, creating an inviting and airy atmosphere throughout.

The generously sized double bedroom is thoughtfully designed, providing ample space for storage and comfort. The apartment is completed by a modern bathroom featuring elegant fixtures and fittings.

Residents benefit from a secure, well-maintained development in a prime location, just a short walk from Birmingham's business district, transport links, and a wide range of shops, restaurants, and amenities.

Ideal for professionals, students or couples, this property offers the perfect combination of city convenience and modern comfort.

Please contact GHE to arrange a viewing!

All data and information set forth on this website regarding real property, for sale, purchase, rental and/or financing, are from sources regarded as reliable. No warranties are made as to the accuracy of any descriptions and/or other details and such information is subject to errors, omissions, changes of price, tenancies, commissions, prior sales, leases or financing, or withdrawal without notice. Square footages are approximate and may be verified by consulting a professional architect or engineer.

Viewing

Please contact our Global House Estates Ltd Office on 0207 401 2020 if you wish to arrange a viewing appointment for this property or require further information.

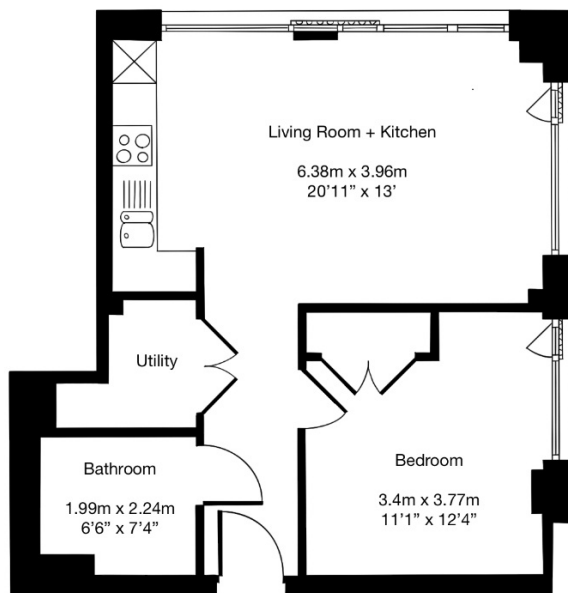
Disclaimer

This website provides information about buying, selling, renting UK property. The information is from reliable sources, but we can't guarantee that it's always accurate. There may be mistakes or changes in the information, such as price, availability, leases, or financing. The square footage is also an estimate and should be confirmed by a professional architect or engineer.

Floor plan

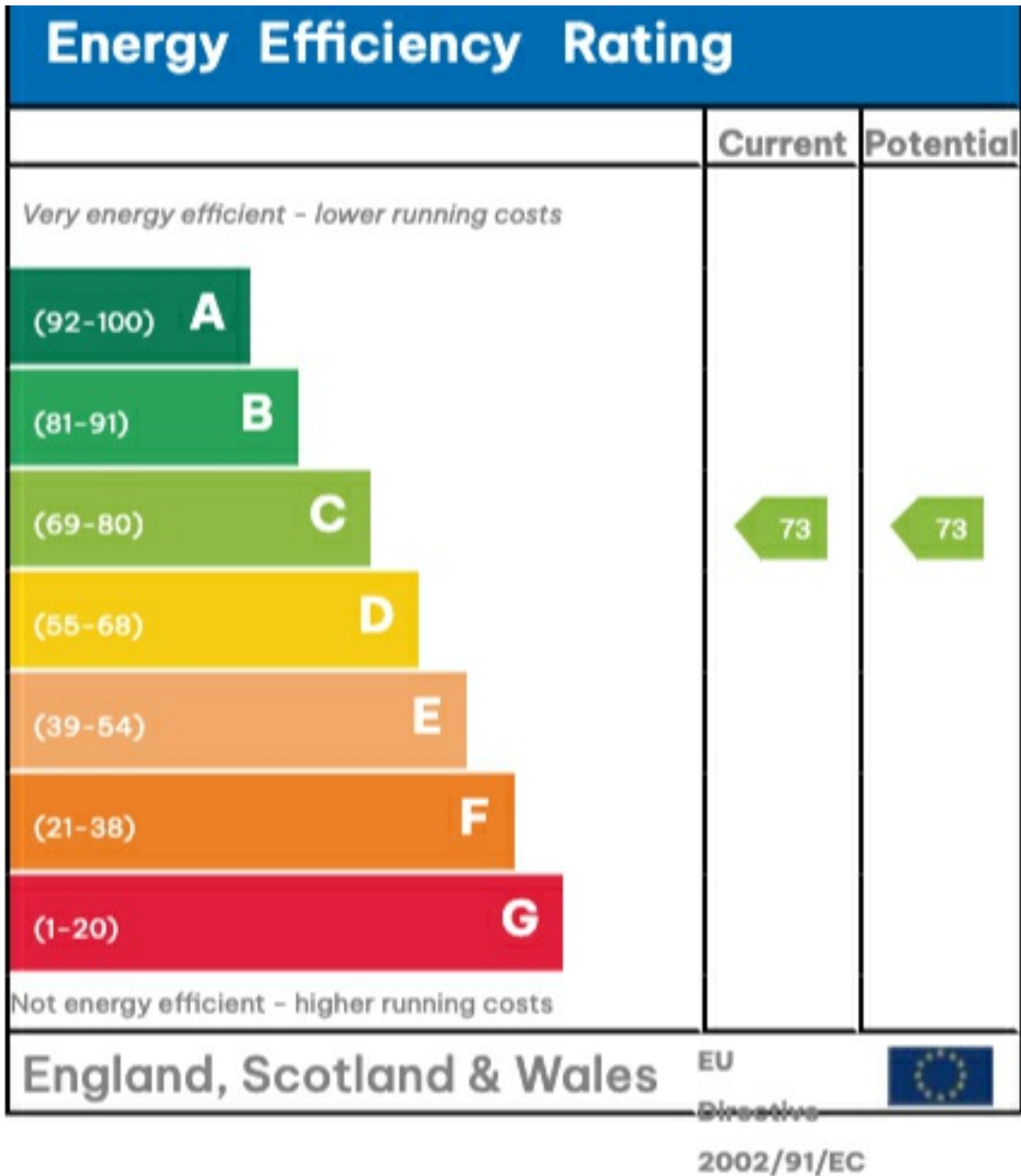
Approx. Total Area

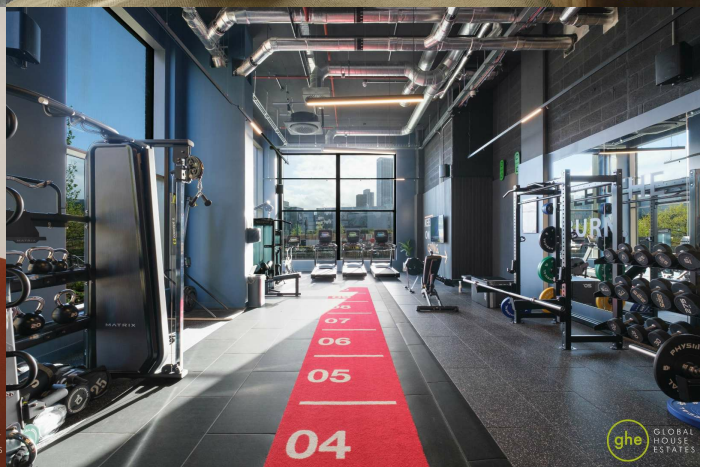
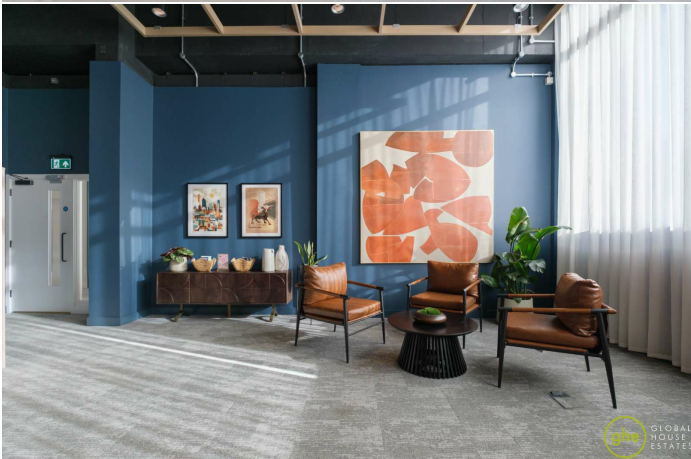
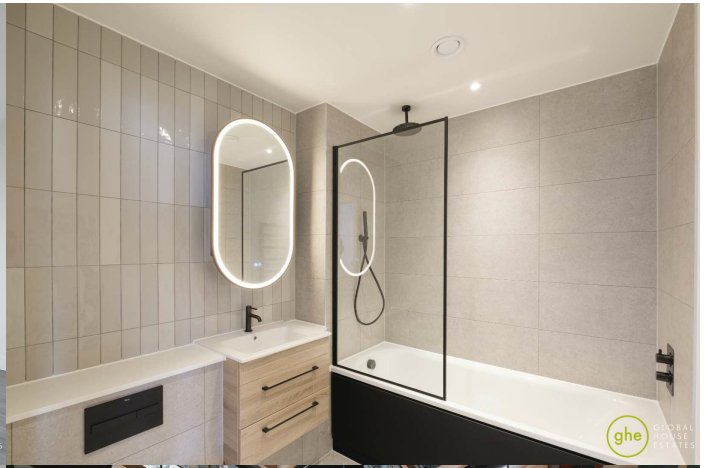
50 sqm / 538 sqft

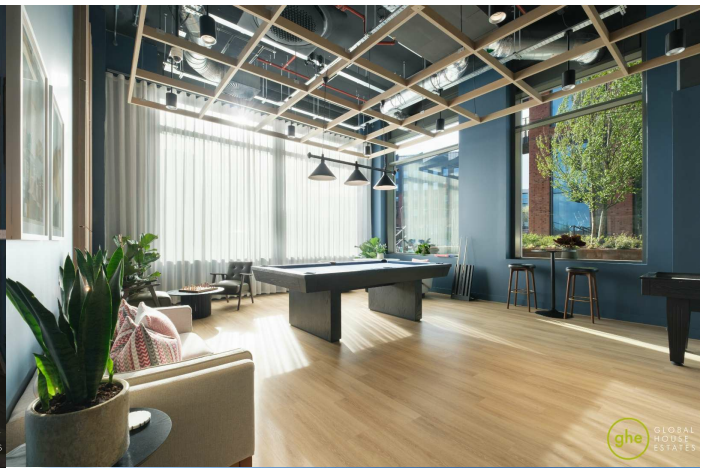
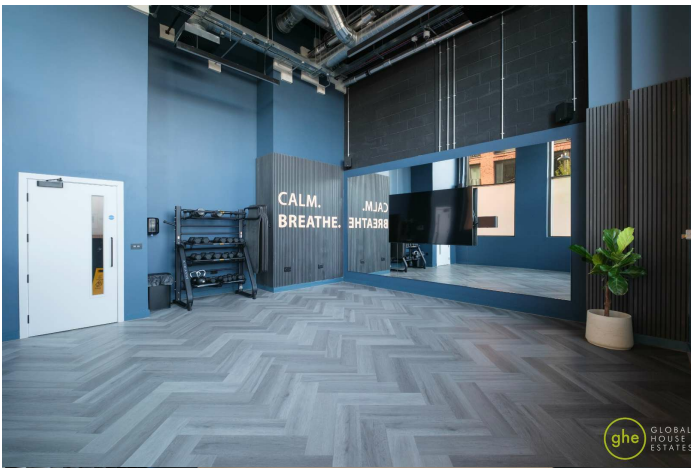


This floor plan is illustrative purposes only. It is not drawn to scale. Any measurements, floor areas (including any total floor area), openings and orientation are approximate. No details are guaranteed, they cannot be relied upon for any purpose and they do not form part of any agreement. No liability is taken for any error, omission or misstatement. A party must rely upon its own inspection(s).

EPC









35a St Georges Road, London,
SE1 6EW
+44 (0) 207 401 2020

<https://globalhouseestates.com>

Level 24, Lee Garden One,
33 Hysan Ave, Causeway Bay,
Hong Kong
+852 3963 8411