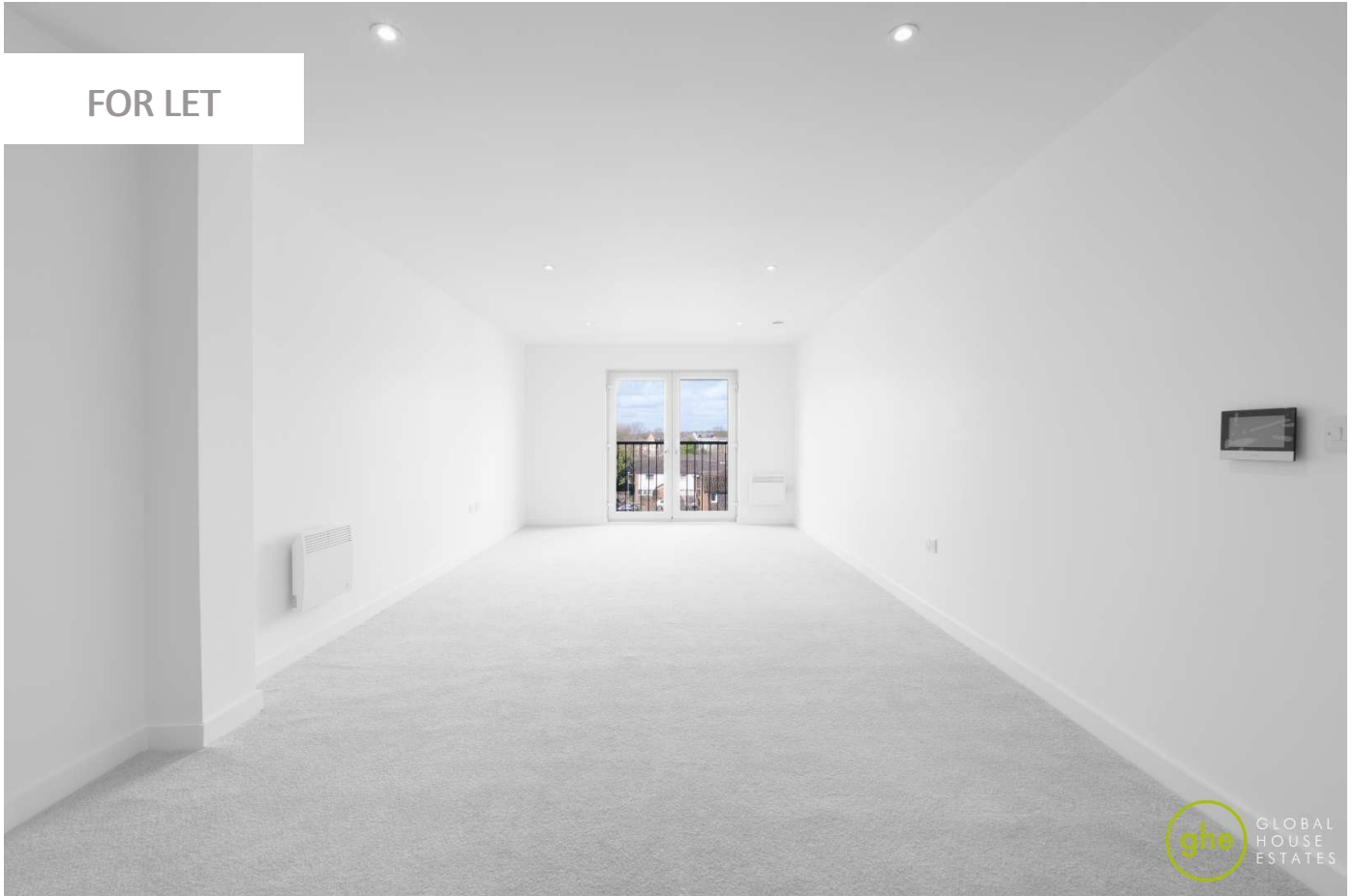


GRANT COURT, SALFORD, MANCHESTER

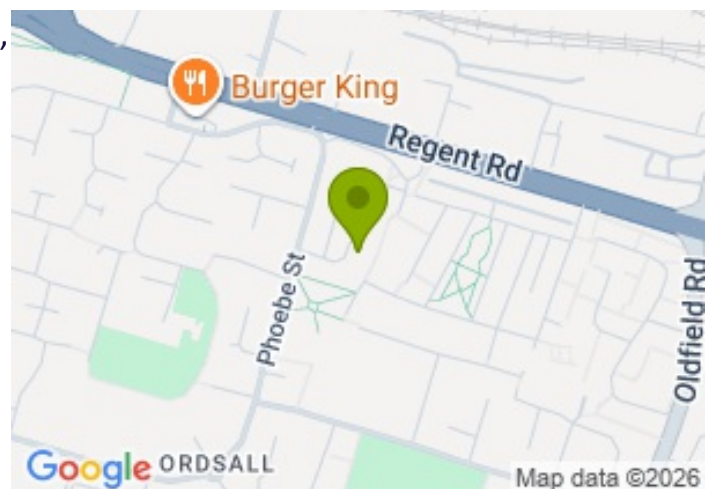
£1,250.00



FOR LET



- *Brand new* modern 2 bedroom apartment, unfurnished
- Prime location - perfectly placed between the City Centre and MediaCityUK
- Communal gardens – access to beautifully landscaped outdoor resident areas
- Perfectly situated directly next to the canal, offers a peaceful waterside setting
- EPC - B
- Available now



Property Description

Available for immediate occupation is this *brand new* two-bedroom apartment in the sought-after Bridgewater Wharf development. Designed for professional living, the property offers a sleek, contemporary interior with high-quality fixtures and fittings throughout.

The apartment comprises a spacious entrance hallway with a utility room leading into a large open-plan living and dining area. The kitchen is ultra-modern, featuring integrated appliances and a minimalist design. Two generous double bedrooms provide ample space for wardrobes and desks, making it ideal for sharers or those working from home. A luxury three-piece bathroom suite completes the accommodation.

The development is situated on the banks of the canal with excellent transportation links to the city, offering a peaceful retreat just minutes away from the hustle and bustle of the city.

This stunning apartment is a perfect living place for small family, professionals and students.

Please contact GHE to book a viewing!

All data and information set forth on this website regarding real property, for sale, purchase, rental and/or financing, are from sources regarded as reliable. No warranties are made as to the accuracy of any descriptions and/or other details and such information is subject to errors, omissions, changes of price, tenancies, commissions, prior sales, leases or financing, or withdrawal without notice. Square footages are approximate and may be verified by consulting a professional architect or engineer.

Viewing

Please contact our Global House Estates Ltd Office on 0207 401 2020 if you wish to arrange a viewing appointment for this property or require further information.

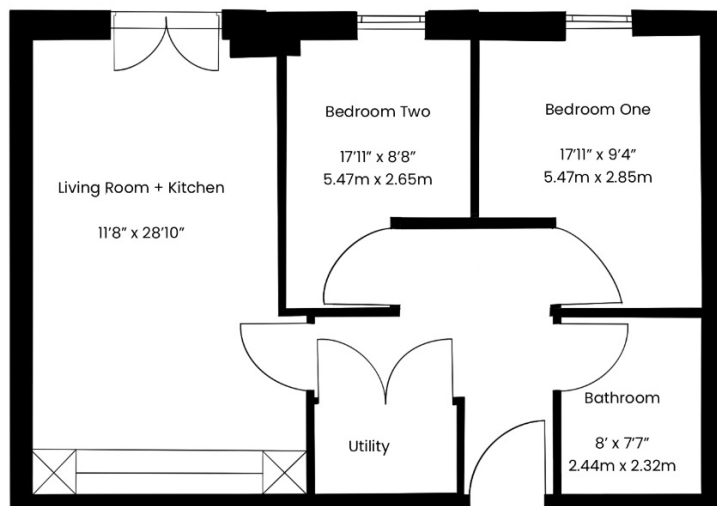
Disclaimer

This website provides information about buying, selling, renting UK property. The information is from reliable sources, but we can't guarantee that it's always accurate. There may be mistakes or changes in the information, such as price, availability, leases, or financing. The square footage is also an estimate and should be confirmed by a professional architect or engineer.

Floor plan

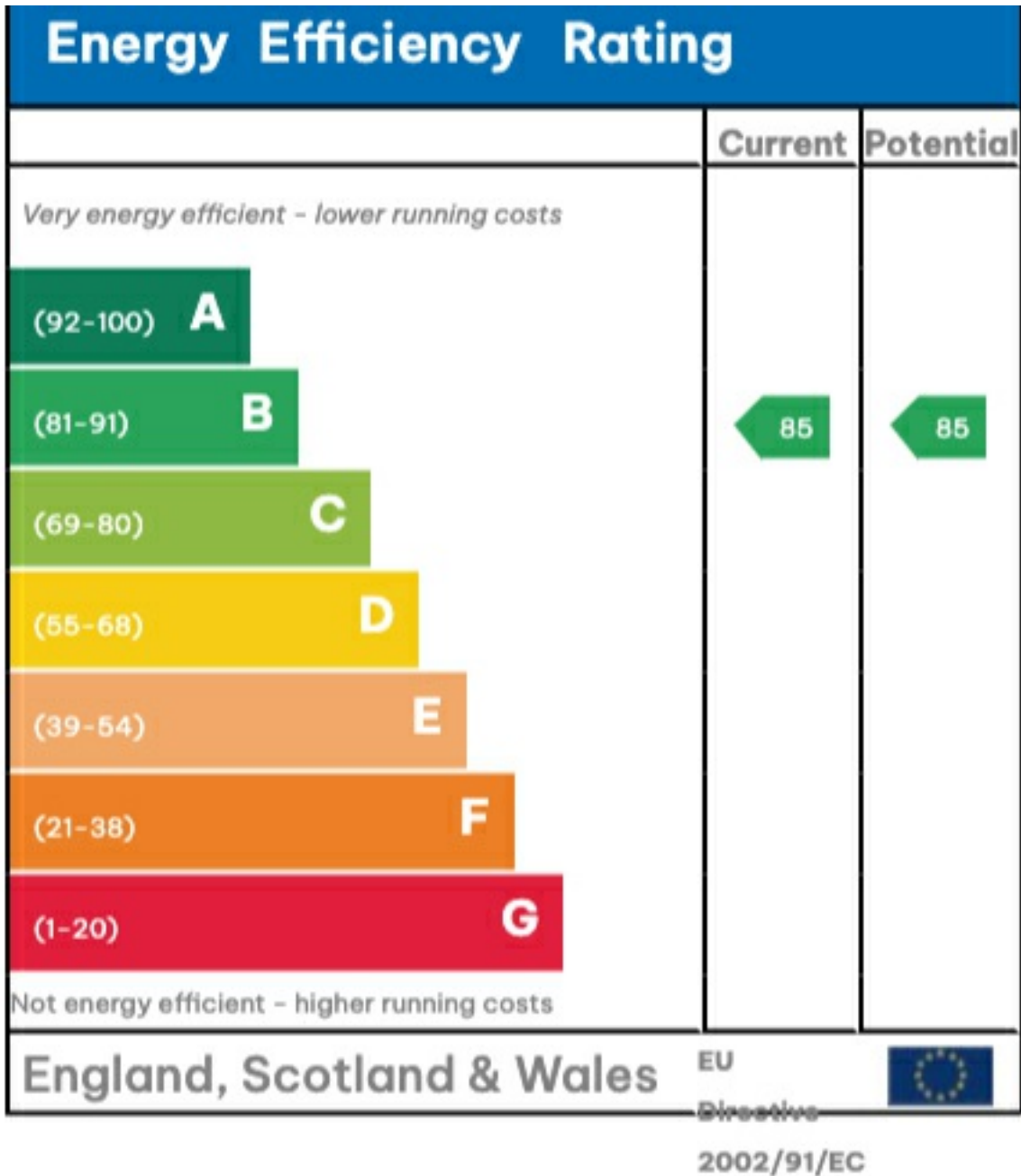
Approx. Total Area

74 sqm / 796 sqft



This floor plan is illustrative purposes only. It is not drawn to scale. Any measurements, floor areas (including any total floor area), openings and orientation are approximate. No details are guaranteed, they cannot be relied upon for any purpose and they do not form part of any agreement. No liability is taken for any error, omission or misstatement. A party must rely upon its own inspection(s).

EPC







35a St Georges Road, London,
SE1 6EW
+44 (0) 207 401 2020

<https://globalhouseestates.com>

Level 24, Lee Garden One,
33 Hysan Ave, Causeway Bay,
Hong Kong
+852 3963 8411