

0247 401 2020 | enquiries@globalhousestates.com

CARLOW STREET, MORNINGTON CRESCENT, LONDON

£510.00



FOR LET



- One bedroom ground floor apartment
- Stylish modern interior of almost 600 sq ft
- Secure building and on site concierge
- Near to amenities and Regents Park
- Short Walk to Mornington Crescent Underground Station
- Available furnished



Propety Description

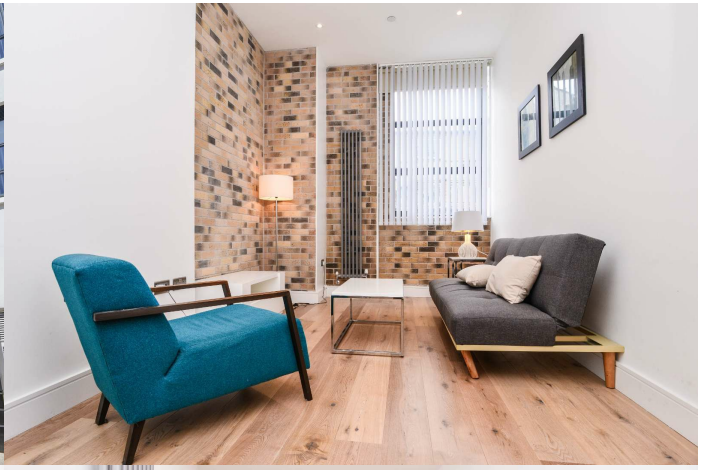
A spacious one bedroom apartment of almost 600 sq in this striking development in NW1 with onsite concierge. The apartment has high ceilings and a warehouse feel which is in keeping with the Art Deco original building which was converted a few years ago by Galliard Homes and features a wonderful entrance vestibule. The interior is entirely modern with an open plan, integrated kitchen onto a roomy reception, The bathroom is stylish and the bedroom has built in wardrobes. You are perfectly positioned with a variety of shops and eateries nearby in Camden and Euston. Mornington Crescent Underground Station is moments away and all the open space of Regents Park is a short stroll.

Viewing

Please contact our Global House Estates Ltd Office on 0207 401 2020 if you wish to arrange a viewing appointment for this property or require further information.

Disclaimer

This website provides information about buying, selling, renting UK property. The information is from reliable sources, but we can't guarantee that it's always accurate. There may be mistakes or changes in the information, such as price, availability, leases, or financing. The square footage is also an estimate and should be confirmed by a professional architect or engineer.





35a St Georges Road, London,
SE1 6EW
+44 (0) 207 401 2020

<https://globalhouseestates.com>

Level 24, Lee Garden One,
33 Hysan Ave, Causeway Bay,
Hong Kong
+852 3963 8411