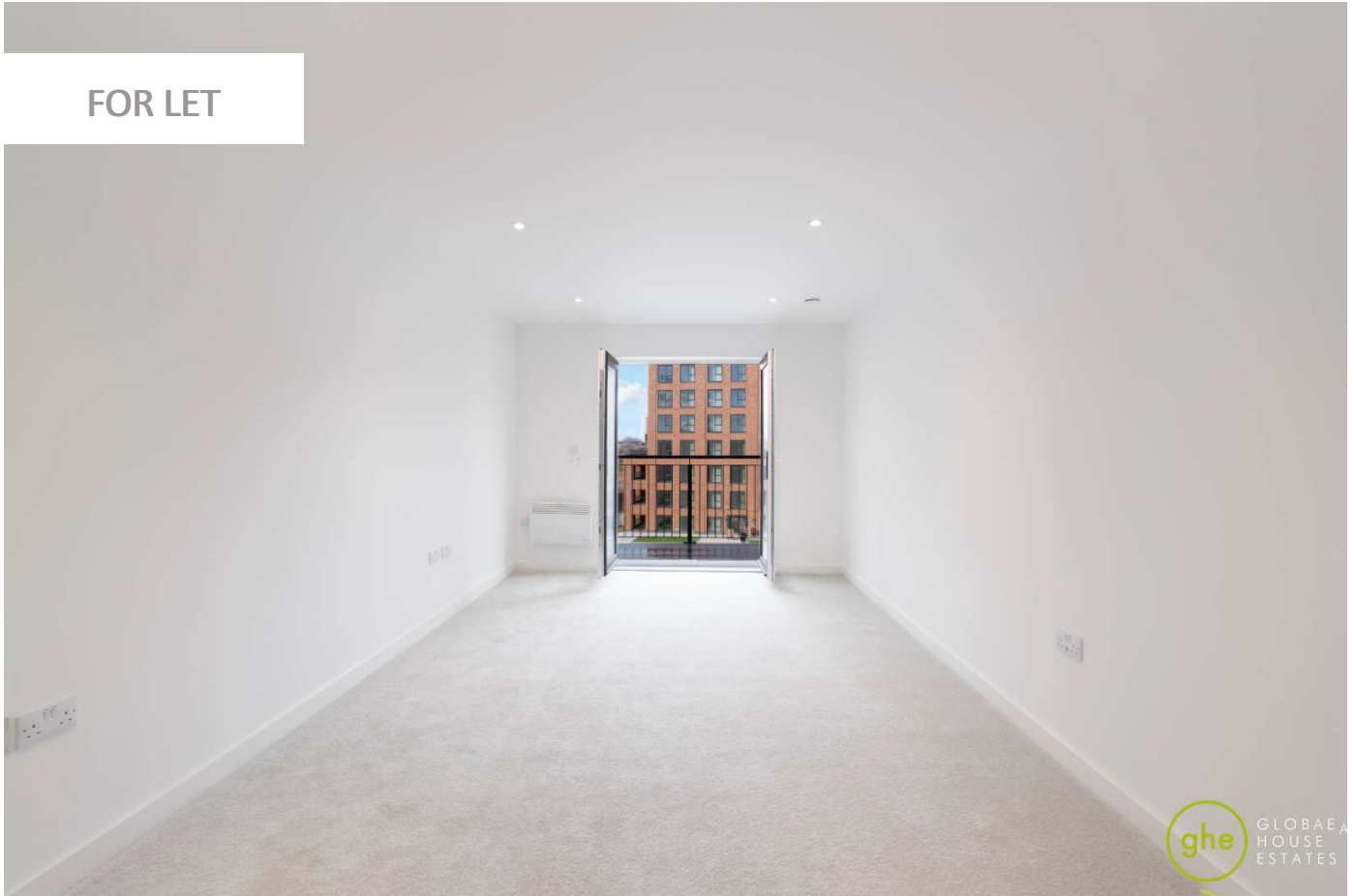


GRANT COURT, SALFORD, MANCHESTER

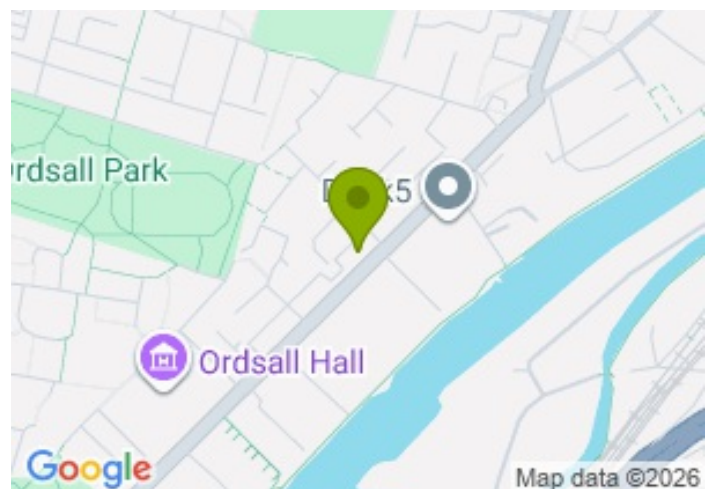
£1,350.00



FOR LET



- \*Brand-new\* - 2 bedroom apartment
- Furnished or Unfurnished - landlord is flexible
- Including one allocated parking space
- Private balcony with stunning views
- Excellent transport links (Metrolink & Bus routes nearby)
- Available in Apr26



## Property Description

Set within the \*brand-new\* developed Bridgewater Wharf, this two-bedroom apartment offers a sophisticated living environment for professionals or small families. The property boasts high-quality flooring throughout and large windows that flood the space with natural light.

The heart of the home is the open-plan kitchen and living space, which provides direct access to the private balcony. The kitchen is fully fitted with integrated appliances. Both bedrooms are well-proportioned doubles, served by a stylish, contemporary family bathroom with premium tiling.

The property located in the sought-after location in Salford. You are minutes away from the scenic Bridgewater Canal, providing a direct walking/cycling route into the city. With MediaCityUK and the Manchester city core both within easy reach, you have the best of the North's dining and culture on your doorstep.

Please contact GHE for more details!

All data and information set forth on this website regarding real property, for sale, purchase, rental and/or financing, are from sources regarded as reliable. No warranties are made as to the accuracy of any descriptions and/or other details and such information is subject to errors, omissions, changes of price, tenancies, commissions, prior sales, leases or financing, or withdrawal without notice. Square footages are approximate and may be verified by consulting a professional architect or engineer.

## Viewing

Please contact our Global House Estates Ltd Office on 0207 401 2020 if you wish to arrange a viewing appointment for this property or require further information.

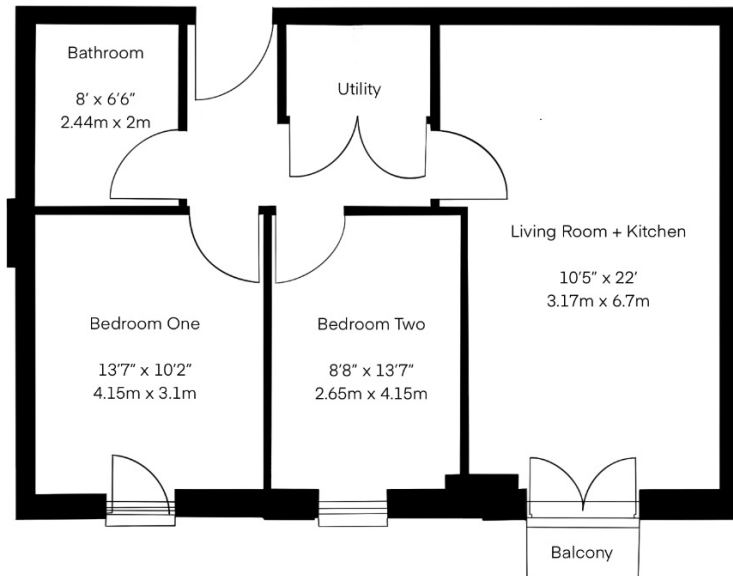
## Disclaimer

This website provides information about buying, selling, renting UK property. The information is from reliable sources, but we can't guarantee that it's always accurate. There may be mistakes or changes in the information, such as price, availability, leases, or financing. The square footage is also an estimate and should be confirmed by a professional architect or engineer.

# Floor plan

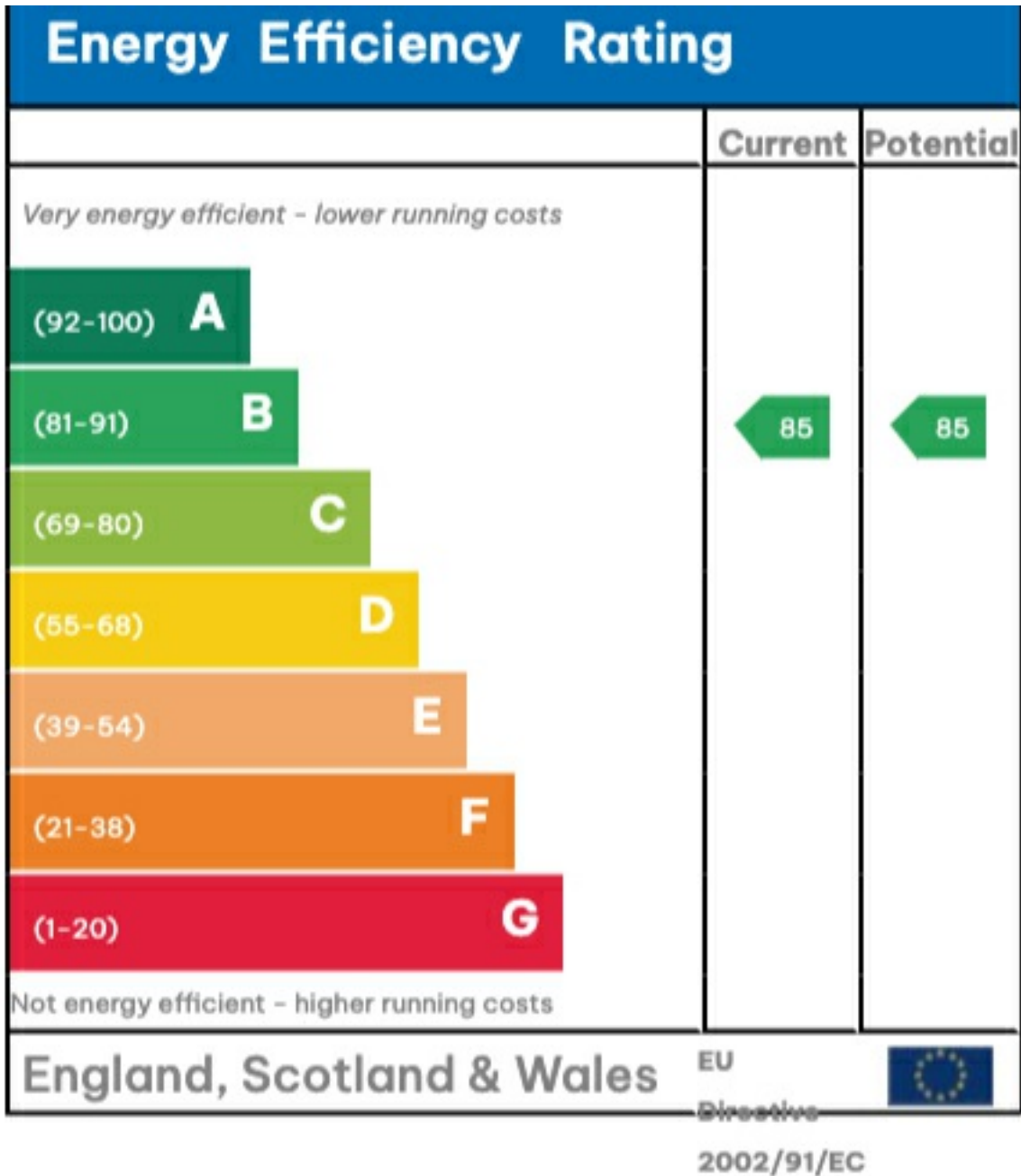
Approx. Total Area

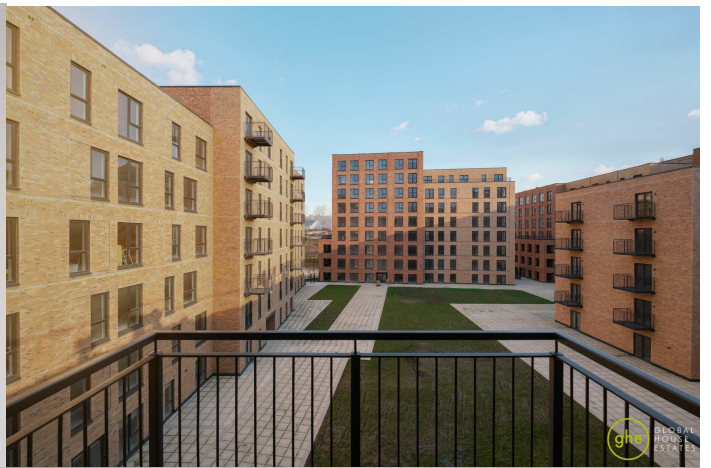
62 sqm / 667 sqft



This floor plan is illustrative purposes only. It is not drawn to scale. Any measurements, floor areas (including any total floor area), openings and orientation are approximate. No details are guaranteed, they cannot be relied upon for any purpose and they do not form part of any agreement. No liability is taken for any error, omission or misstatement. A party must reply upon its own inspection(s).

# EPC







35a St Georges Road, London,  
SE1 6EW  
+44 (0) 207 401 2020

<https://globalhouseestates.com>

Level 24, Lee Garden One,  
33 Hysan Ave, Causeway Bay,  
Hong Kong  
+852 3963 8411