

0247 401 2020 | enquiries@globalhouseestates.com

ROYAL CAPTAIN COURT, CANARY WHARF, LONDON

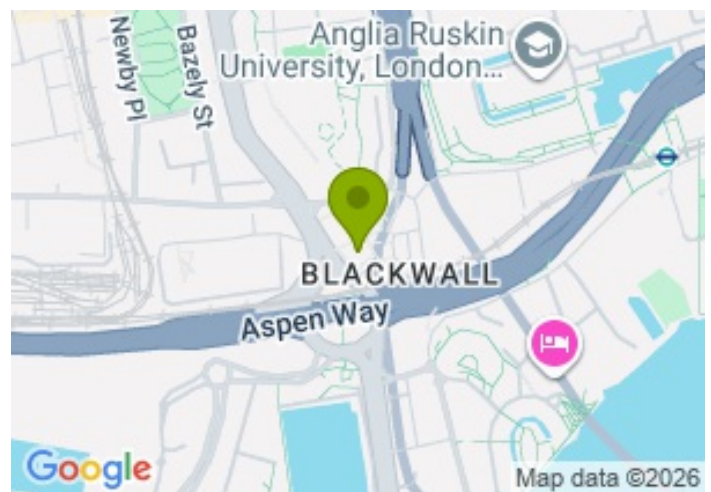
£400,000.00



FOR SALE



- Modern one-bedroom apartment
- Winter balcony with beautiful views
- Underfloor heating throughout
- Large open-plan living area
- Concierge service
- Just 3 minutes away from the DLR station
- Close to local amenities such as shops, cafes and restaurants
- 10th Floor



Property Description

Located on the 10th floor, this beautifully presented one-bedroom apartment is set within Royal Captain Court, forming part of the popular Blackwall Reach development, a thoughtfully designed regeneration project in East London with excellent connectivity to Canary Wharf and the City.

Upon entering, you are welcomed by a bright and spacious open-plan living area. Floor-to-ceiling windows flood the space with natural light, while elegant wooden flooring adds warmth and sophistication throughout. The fully fitted kitchen is seamlessly integrated, complete with quality appliances, creating a stylish and functional living environment.

Extending to 679 sq. ft., this apartment benefits from the elegant winter garden, accessible from both the living area and bedroom, offering a tranquil retreat that can be enjoyed all year round. The generously sized double bedroom provides a calm and comfortable space, benefiting from a built-in wardrobe. The contemporary bathroom is finished to a high standard, featuring sleek fittings and a modern design. The apartment has double-glazed windows and underfloor heating, enhancing insulation and practicality, while engineered wooden flooring adds a refined finish.

Residents further enjoy the convenience of a 24-hour concierge service and lift access, secure bicycle storage, CCTV across the development and a video entry system. Royal Captain Court is ideally located for those seeking a vibrant yet well-connected lifestyle, with access to local shops, restaurants and excellent transport links nearby providing swift access to Canary Wharf, the City, and beyond.

All data and information set forth on this website regarding real property, for sale, purchase, rental and/or financing, are from sources regarded as reliable. No warranties are made as to the accuracy of any descriptions and/or other details and such information is subject to errors, omissions, changes of price, tenancies, commissions, prior sales, leases or financing, or withdrawal without notice. Square footages are approximate and may be verified by consulting a professional architect or engineer.

Viewing

Please contact our Global House Estates Ltd Office on 0207 401 2020 if you wish to arrange a viewing appointment for this property or require further information.

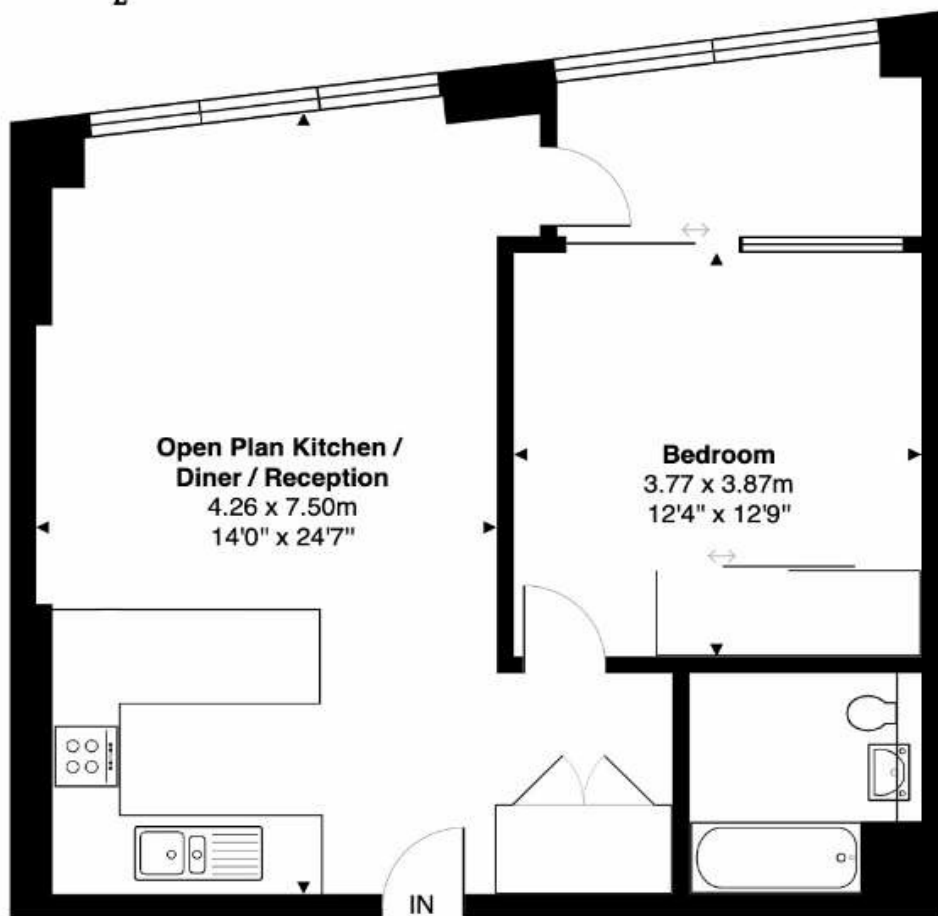
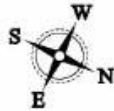
Disclaimer

This website provides information about buying, selling, renting UK property. The information is from reliable sources, but we can't guarantee that it's always accurate. There may be mistakes or changes in the information, such as price, availability, leases, or financing. The square footage is also an estimate and should be confirmed by a professional architect or engineer.

Floor plan

Royal Captain Court, E14

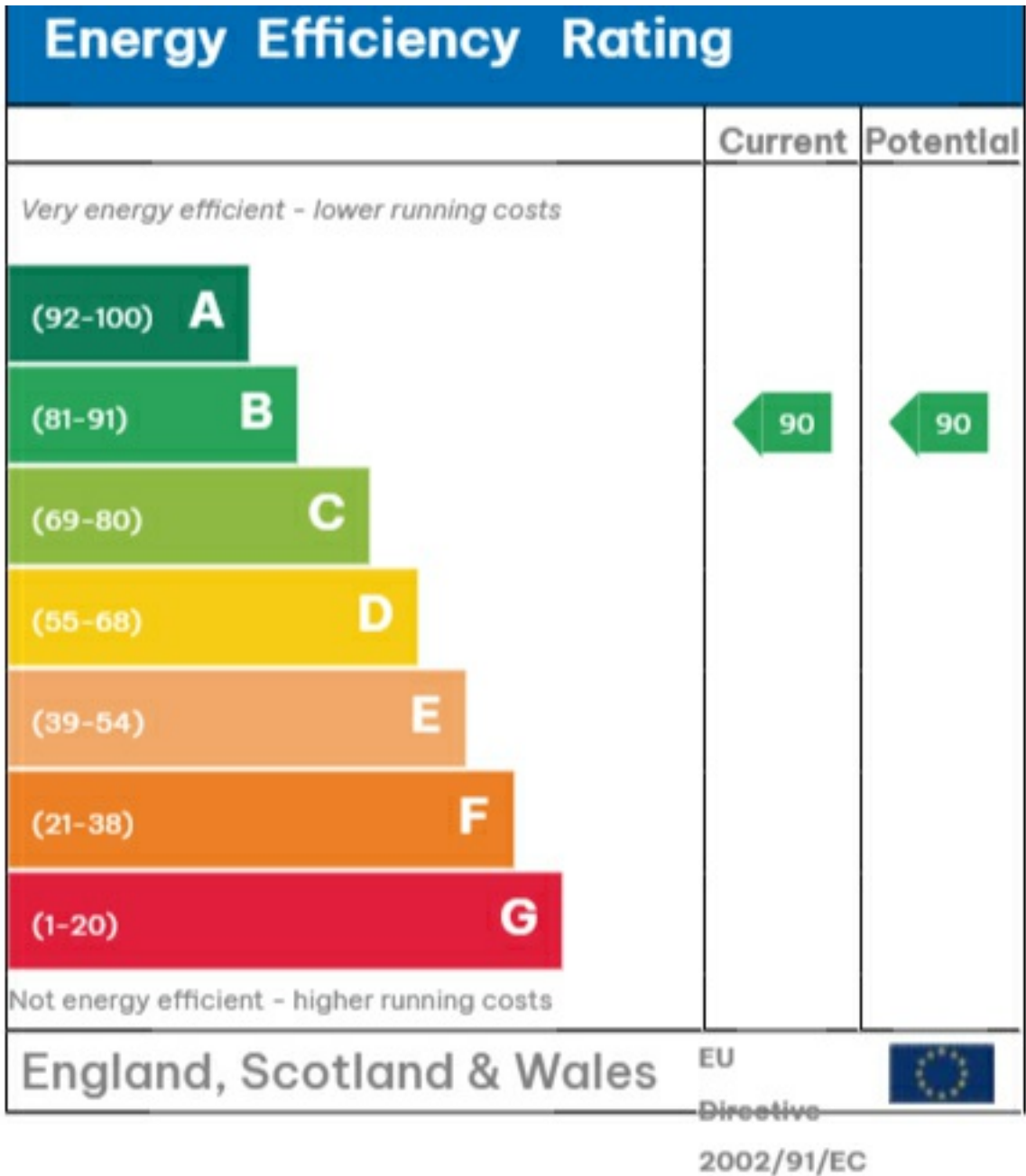
Total Area: 63.1 m² ... 679 ft²



Tenth Floor

This Floorplan is provided without warranty, of any kind.
Bespoke Plans disclaims any warranty including,
without limitation, satisfaction, quality or accuracy of any dimensions

EPC







35a St Georges Road, London,
SE1 6EW
+44 (0) 207 401 2020

<https://globalhouseestates.com>

Level 24, Lee Garden One,
33 Hysan Ave, Causeway Bay,
Hong Kong
+852 3963 8411