

0247 401 2020 | [enquiries@globalhouseestates.com](mailto:enquiries@globalhouseestates.com)

**HIGH DEFINITION, RED, SALFORD, MANCHESTER**

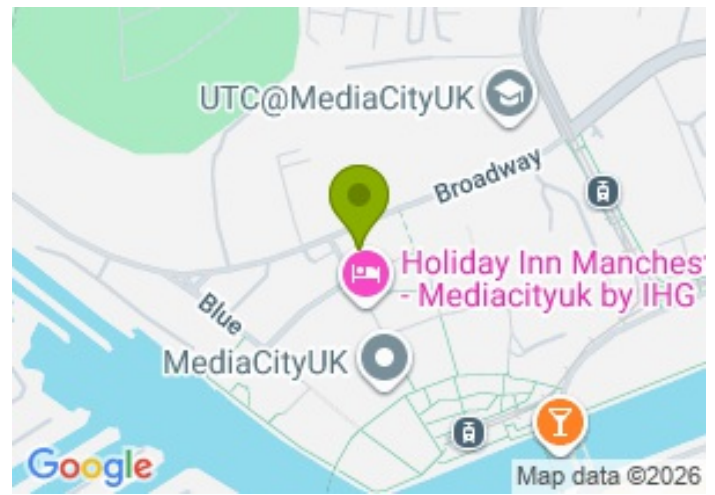
£1,200.00



FOR LET



- Spacious one bedroom apartment
- Available from 21Apr26
- Fully furnished
- 24 hours Concierge
- Co-working Space and Residents Lounge
- Multi-Function Private Room and Communal Residents Podium Terrace



## Property Description

GHE is delighted to bring to the market this beautiful one bedroom flat on the 11th floor within this impressive building. This modern designed apartment is fully furnished including an integrated fridge, dishwasher, microwave, oven and washing machine.

The stunning one bedroom apartment gives a spacious feel and relaxing place to people who loves city life. The modern and crafted elegance of design through out the development. Floor to ceiling windows brighten the room for light filled living.

High Definition is located in the heart of media city, surrounded by all the local transport links you may need, including a tram stop just in 3 minutes walking distance. Local shops, restaurants and cinema are nearby.

Please contact GHE to book a viewing.

All data and information set forth on this website regarding real property, for sale, purchase, rental and/or financing, are from sources regarded as reliable. No warranties are made as to the accuracy of any descriptions and/or other details and such information is subject to errors, omissions, changes of price, tenancies, commissions, prior sales, leases or financing, or withdrawal without notice. Square footages are approximate and may be verified by consulting a professional architect or engineer.

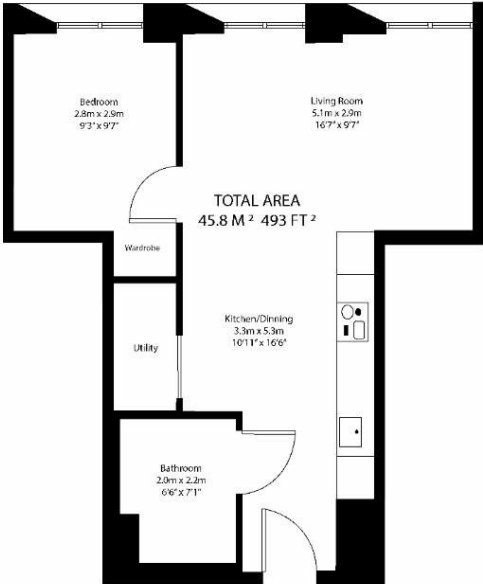
## Viewing

Please contact our Global House Estates Ltd Office on 0207 401 2020 if you wish to arrange a viewing appointment for this property or require further information.

## Disclaimer

This website provides information about buying, selling, renting UK property. The information is from reliable sources, but we can't guarantee that it's always accurate. There may be mistakes or changes in the information, such as price, availability, leases, or financing. The square footage is also an estimate and should be confirmed by a professional architect or engineer.

# Floor plan



This floor plan is for illustrative purposes only. It is not drawn to scale. Any measurements, floor areas (including any total floor area), openings and orientation are approximate. No details are guaranteed, they cannot be relied upon for any purpose and they do not form part of any agreement. No liability is taken for any error, omission or misstatement. A party must rely upon its own inspection(s).

# Energy efficiency rating for this property

This property’s current energy rating is B. It has the potential to be B.

[See how to improve this property’s energy performance.](#)

Score	Energy rating	Current	Potential
92+	A		
81-91	B	84   B	84   B
69-80	C		
55-68	D		
39-54	E		
21-38	F		
1-20	G		







35a St Georges Road, London,  
SE1 6EW  
+44 (0) 207 401 2020

<https://globalhousestates.com>

Level 24, Lee Garden One,  
33 Hysan Ave, Causeway Bay,  
Hong Kong  
+852 3963 8411