

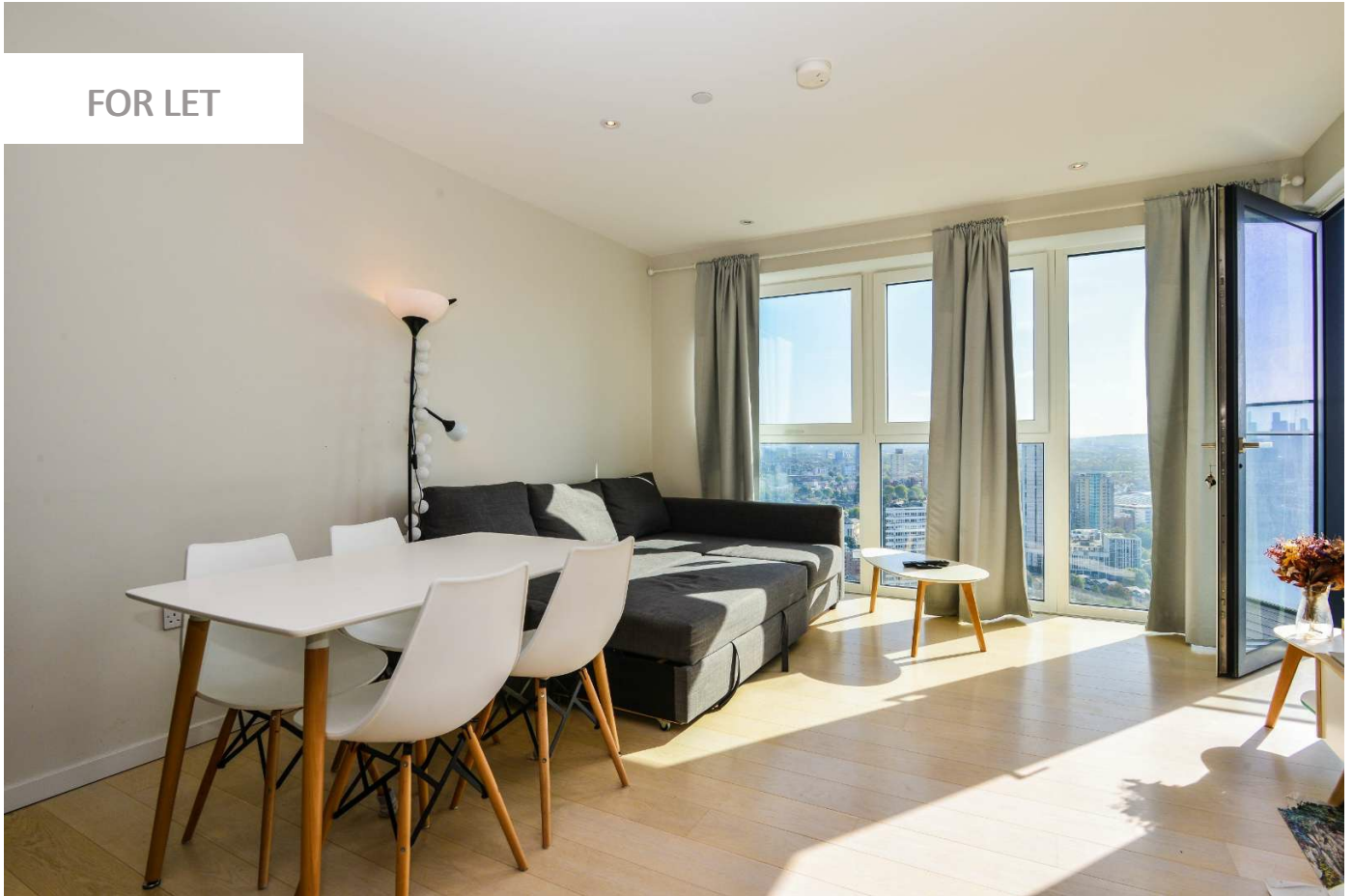
0247 401 2020 | enquiries@globalhouseestates.com

2 GLASSHOUSE GARDENS, STRATFORD, LONDON

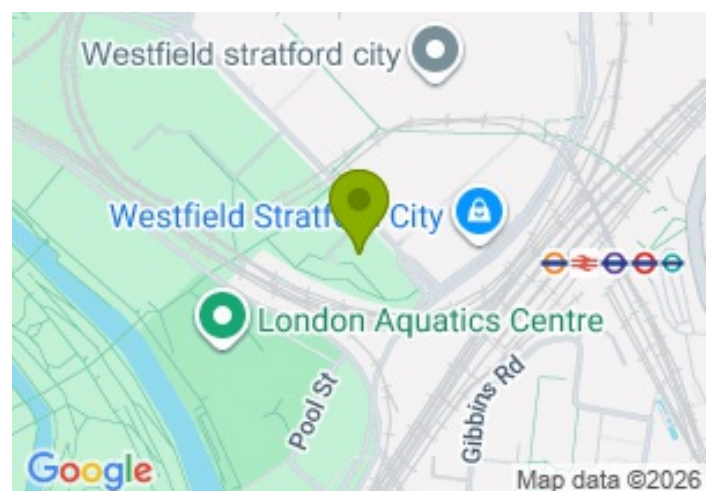
£540.00



FOR LET



- One bedroom, 25th floor apartment
- Spectacular views
- Private terrace
- Incredibly convenient location
- 24 hour concierge and residents gym



Property Description

A superb, 25th floor one bedroom apartment within the fantastic Glasshouse Gardens development in Stratford. The property offers stylish, modern and light accommodation with amazing views over the Olympic Park and to Canary Wharf. There is a spacious open plan kitchen and living room with the private terrace off it, Bedroom with built in cupboards, smart bathroom and plenty of storage throughout.

The location is fantastic - near to Stratford Underground, Train and International Station. Westfield Shopping Centre is close as are a fine selection of restaurants and amenities and you have the green open space of The Queen Elizabeth Park near too. The development offers a 24 hour concierge and residents on site gym.

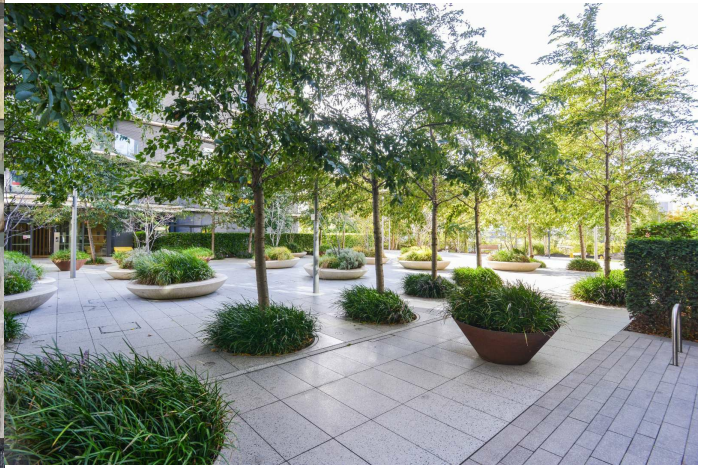
Viewing

Please contact our Global House Estates Ltd Office on 0207 401 2020 if you wish to arrange a viewing appointment for this property or require further information.

Disclaimer

This website provides information about buying, selling, renting UK property. The information is from reliable sources, but we can't guarantee that it's always accurate. There may be mistakes or changes in the information, such as price, availability, leases, or financing. The square footage is also an estimate and should be confirmed by a professional architect or engineer.







35a St Georges Road, London,
SE1 6EW
+44 (0) 207 401 2020

<https://globalhouseestates.com>

Level 24, Lee Garden One,
33 Hysan Ave, Causeway Bay,
Hong Kong
+852 3963 8411