

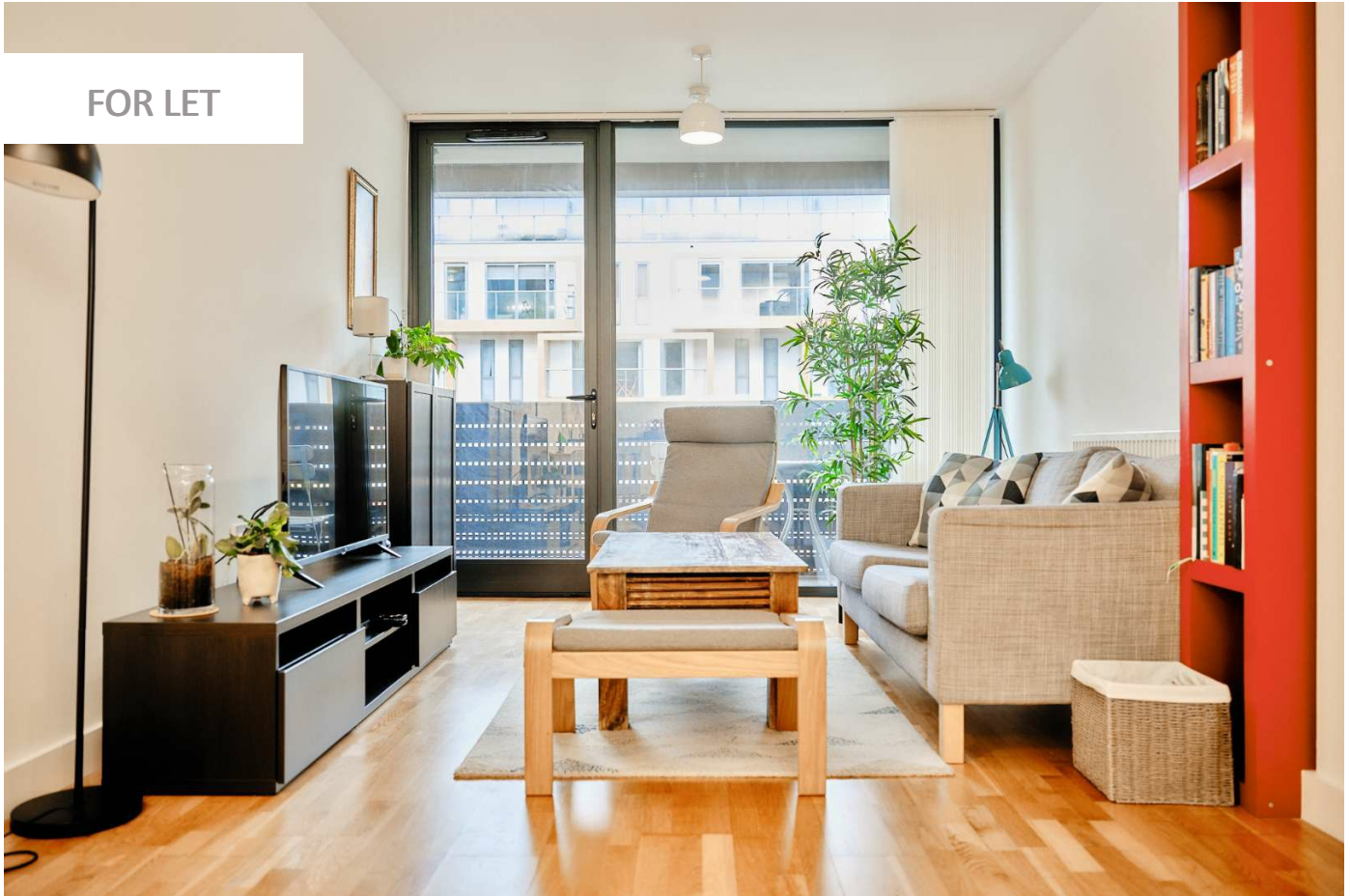
0247 401 2020 | [enquiries@globalhouseestates.com](mailto:enquiries@globalhouseestates.com)

22 AMELIA STREET, ELEPHANT & CASTLE, LONDON

£450.00



FOR LET



- Modern One Double Bedroom Apartment
- Secure Gated Development
- Balcony
- Concierge
- Furnished
- Close to Elephant and Castle Station
- Large open-plan reception room
- Modern kitchen



## Property Description

A well presented one bedroom apartment in the 'Printworks' development in the heart of Elephant & Castle. Located on the 4th floor the accommodation comprises a reception room with balcony, open modern fitted kitchen, large bedroom and bathroom with shower. Further benefits include an on-site daytime concierge, entry phone system and a landscaped courtyard.

The property is ideally situated within walking distance to Elephant & Castle and Kennington Stations offering easy access to The City and West End.

Situated in a prime location of Elephant & Castle, this property offers excellent transport links nearby, making commuting a breeze. The vibrant neighbourhood offers a wide array of local amenities, including shopping, dining, and leisure options, ensuring a fulfilling lifestyle

## Viewing

Please contact our Global House Estates Ltd Office on 0207 401 2020 if you wish to arrange a viewing appointment for this property or require further information.

## Disclaimer

This website provides information about buying, selling, renting UK property. The information is from reliable sources, but we can't guarantee that it's always accurate. There may be mistakes or changes in the information, such as price, availability, leases, or financing. The square footage is also an estimate and should be confirmed by a professional architect or engineer.

# Floor plan

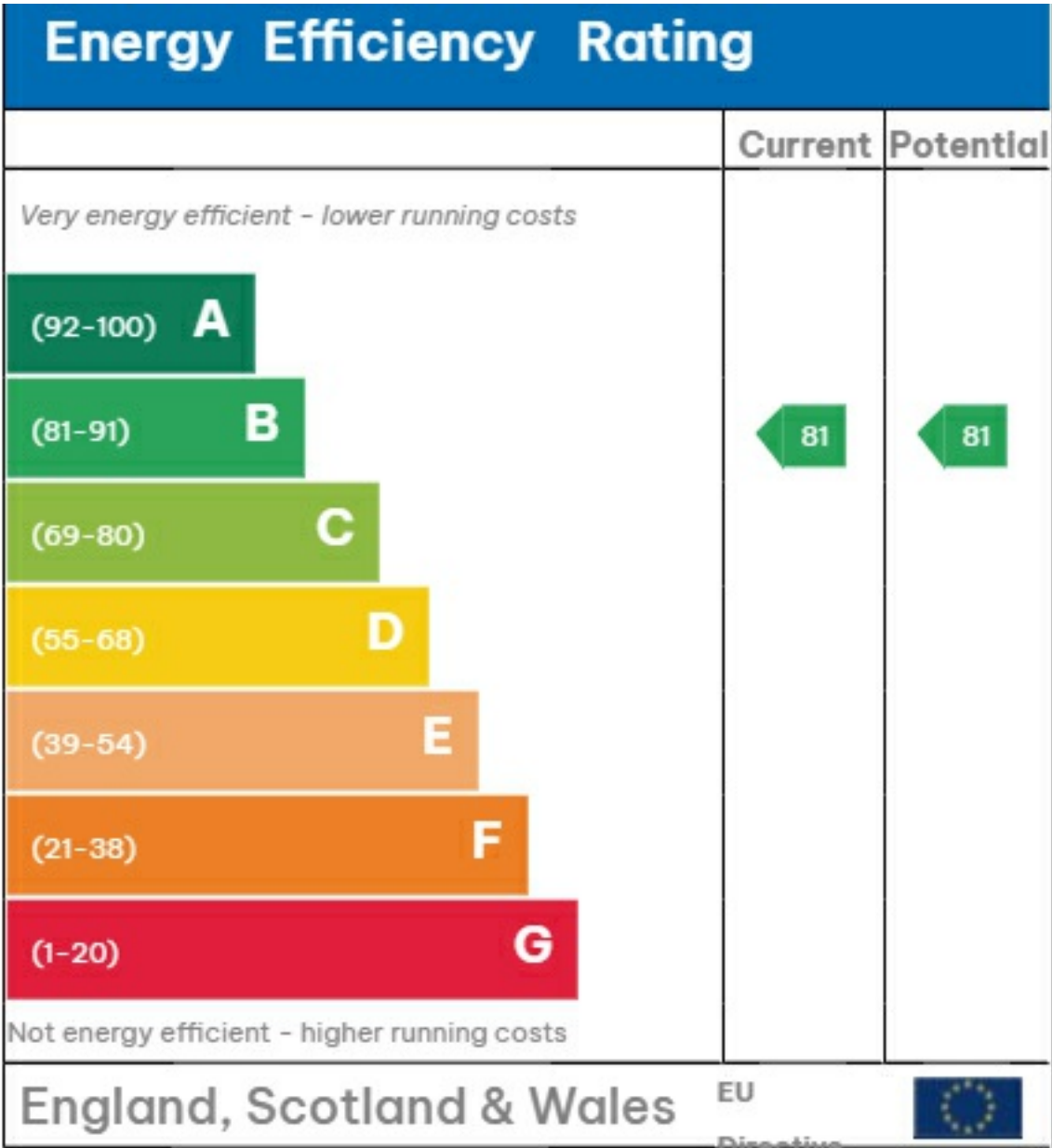
## The Printworks, Amelia Street, SE17

Total Area: 46.0 m<sup>2</sup> ... 495 ft<sup>2</sup> (excluding balcony)



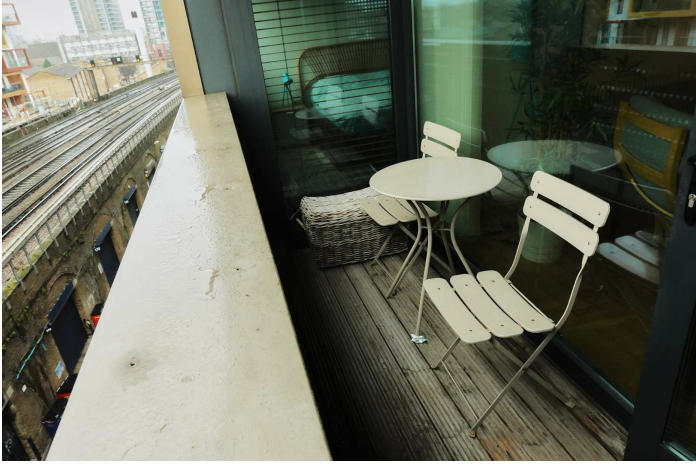
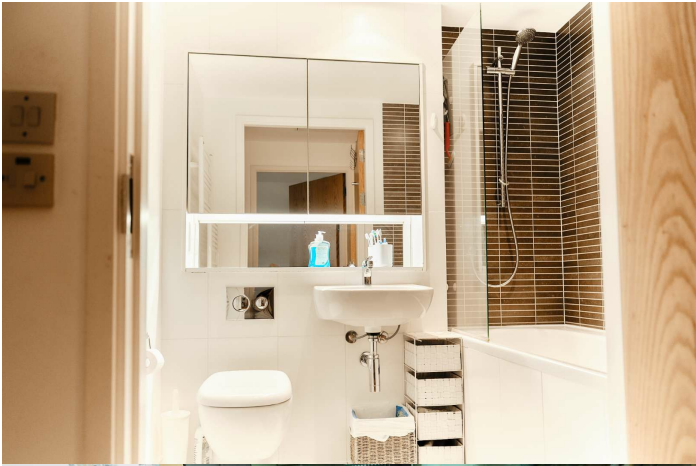
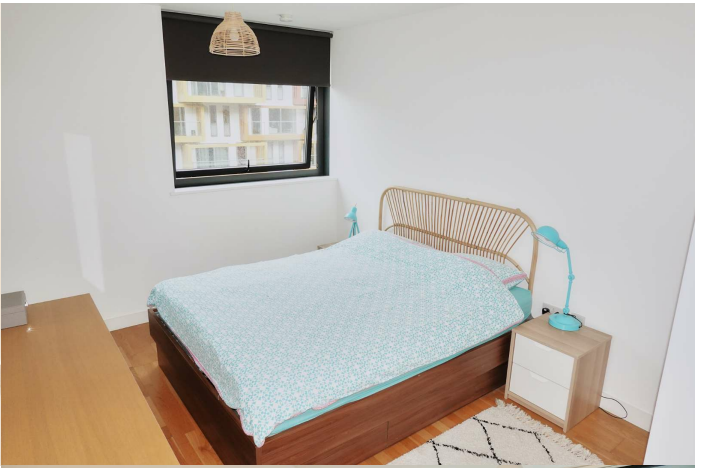
This Floorplan is provided without warranty, of any kind.  
Bespoke Plans disclaims any warranty including,  
without limitation, satisfaction, quality or accuracy of any dimensions

EPC



2002/91/EC







35a St Georges Road, London,  
SE1 6EW  
+44 (0) 207 401 2020

<https://globalhouseestates.com>

Level 24, Lee Garden One,  
33 Hysan Ave, Causeway Bay,  
Hong Kong  
+852 3963 8411