

ANCHORAGE POINT, DOCKLANDS, LONDON

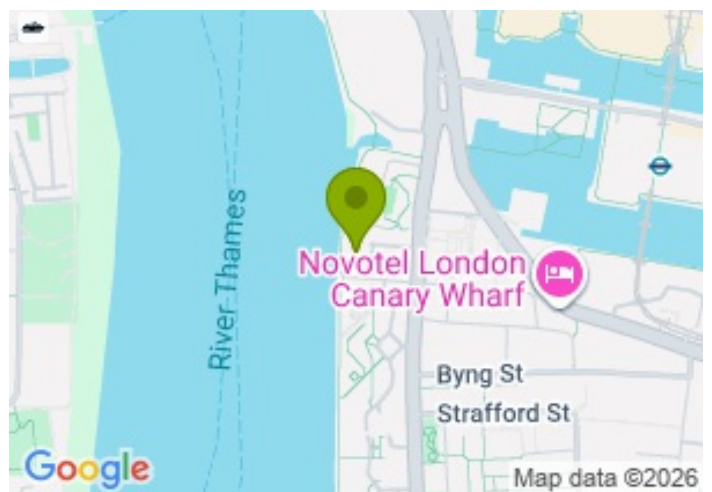
£461.53



FOR LET



- One Bedroom Apartment
- Spacious Dining/Living area
- Modern Bathroom
- 24/7 Concierge Service
- On-site gym, Pool & Sauna Room
- Private Underground Parking
- Higher Floor
- Private Balcony



Property Description

Large one bedroom apartment located on the third floor of one of the most wanted developments in Canary Wharf, Anchorage Point. The property comprises of a very spacious bedroom & dining/living area, highly functioning kitchen and recently refurbished bathroom as well as its very own, private balcony facing Canary Wharf

Plenty of storage space, wooden flooring throughout and daylight coming in all day long , this flat has all the benefits of a modern and homely feeling space alongside with the security and the luxury the 24/7 concierge service and amenities can offer, Pool, Sauna room, Gym and Secure allocated Parking

Just minutes away from all the bars, restaurants and shops of Canary Wharf, your entertainment certainly doesn't stop there as the brand new Elisabeth Line, Jubilee Line, Heron Quays and South Quays DLR Stations are less than 10 minutes away, so you are greatly connected to all parts of the city.

All data and information set forth on this website regarding real property, for sale, purchase, rental and/or financing, are from sources regarded as reliable. No warranties are made as to the accuracy of any descriptions and/or other details and such information is subject to errors, omissions, changes of price, tenancies, commissions, prior sales, leases or financing, or withdrawal without notice. Square footages are approximate and may be verified by consulting a professional architect or engineer.

Viewing

Please contact our Global House Estates Ltd Office on 0207 401 2020 if you wish to arrange a viewing appointment for this property or require further information.

Disclaimer

This website provides information about buying, selling, renting UK property. The information is from reliable sources, but we can't guarantee that it's always accurate. There may be mistakes or changes in the information, such as price, availability, leases, or financing. The square footage is also an estimate and should be confirmed by a professional architect or engineer.

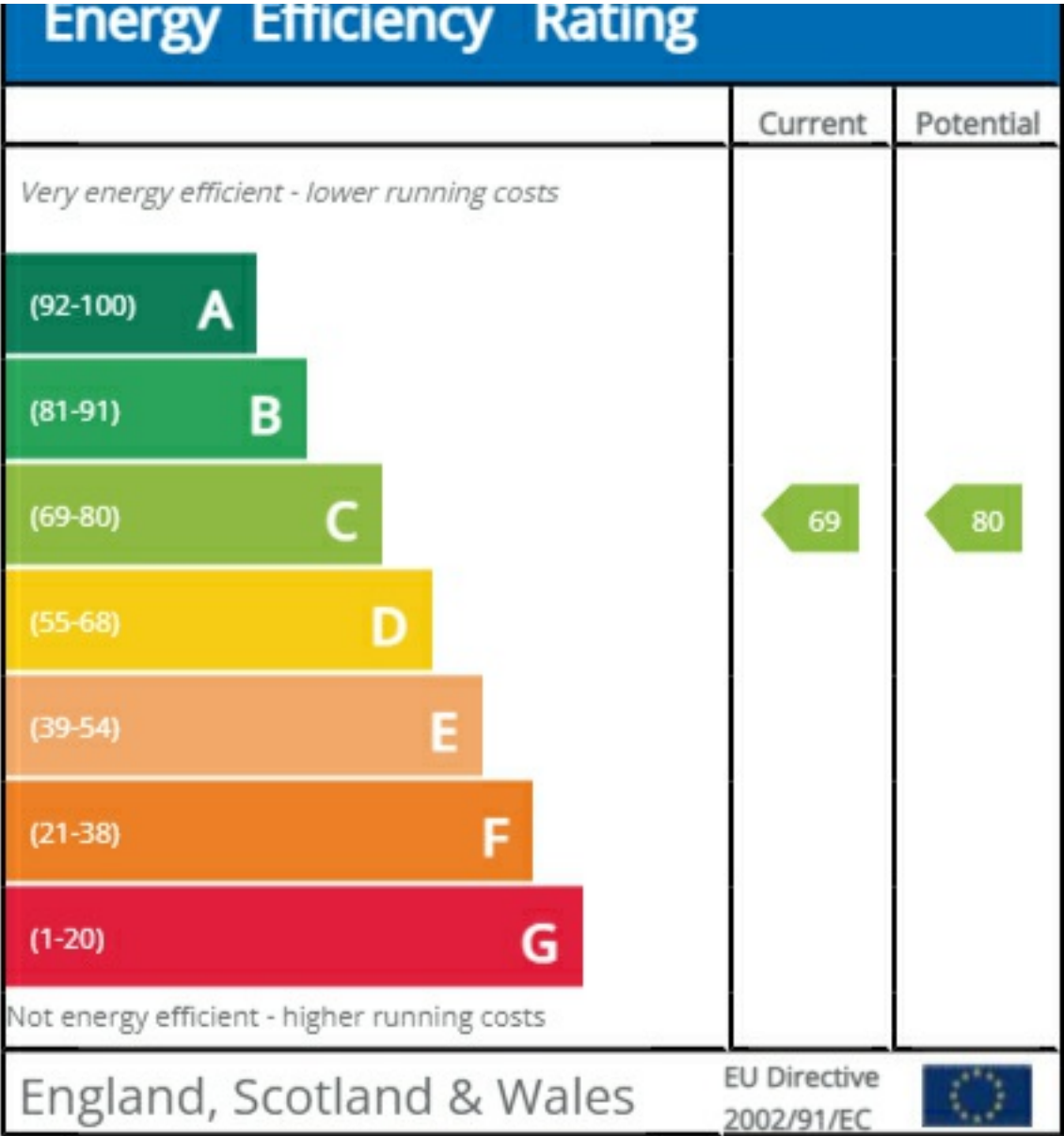
Floor plan

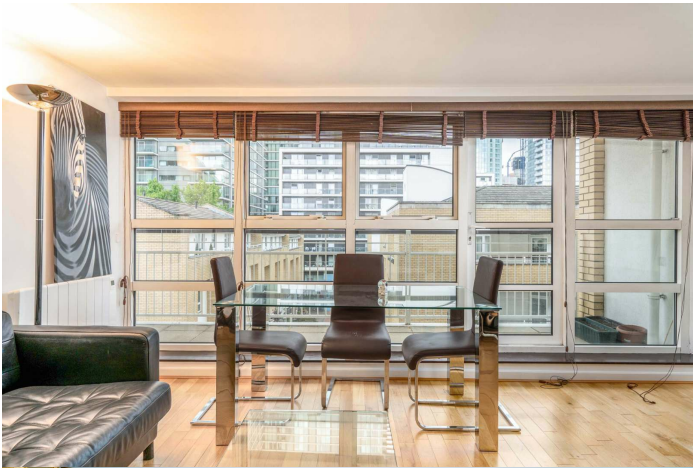


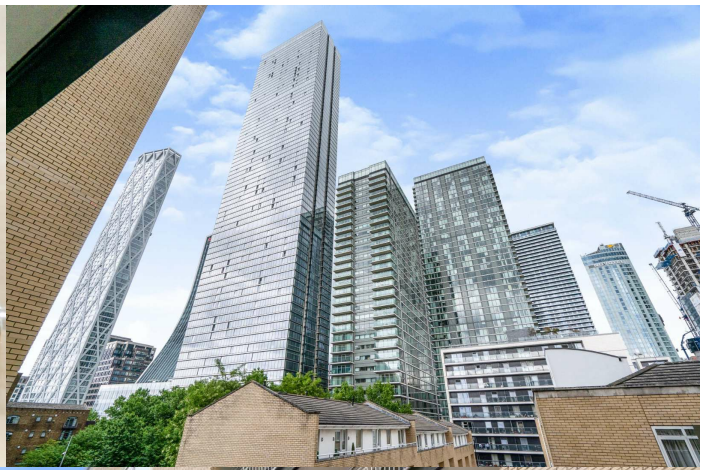
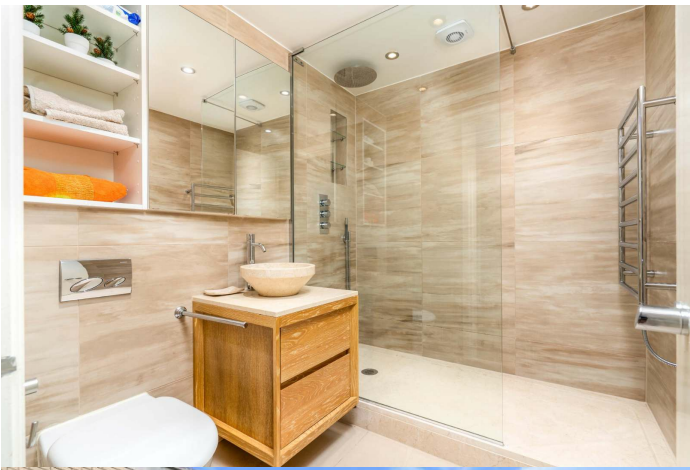
Total floor area 57.1 sq.m. (614 sq.ft.) approx

This floor plan is for illustrative purposes only. It is not drawn to scale. Any measurements, floor areas (including any total floor area), openings and orientation are approximate. No details are guaranteed, they cannot be relied upon for any purpose and they do not form part of any agreement. No liability is taken for any error, omission or misstatement. A party must rely upon its own inspection(s). Powered by www.focalagent.com

EPC







35a St Georges Road, London,
SE1 6EW
+44 (0) 207 401 2020

<https://globalhouseestates.com>

Level 24, Lee Garden One,
33 Hysan Ave, Causeway Bay,
Hong Kong
+852 3963 8411