

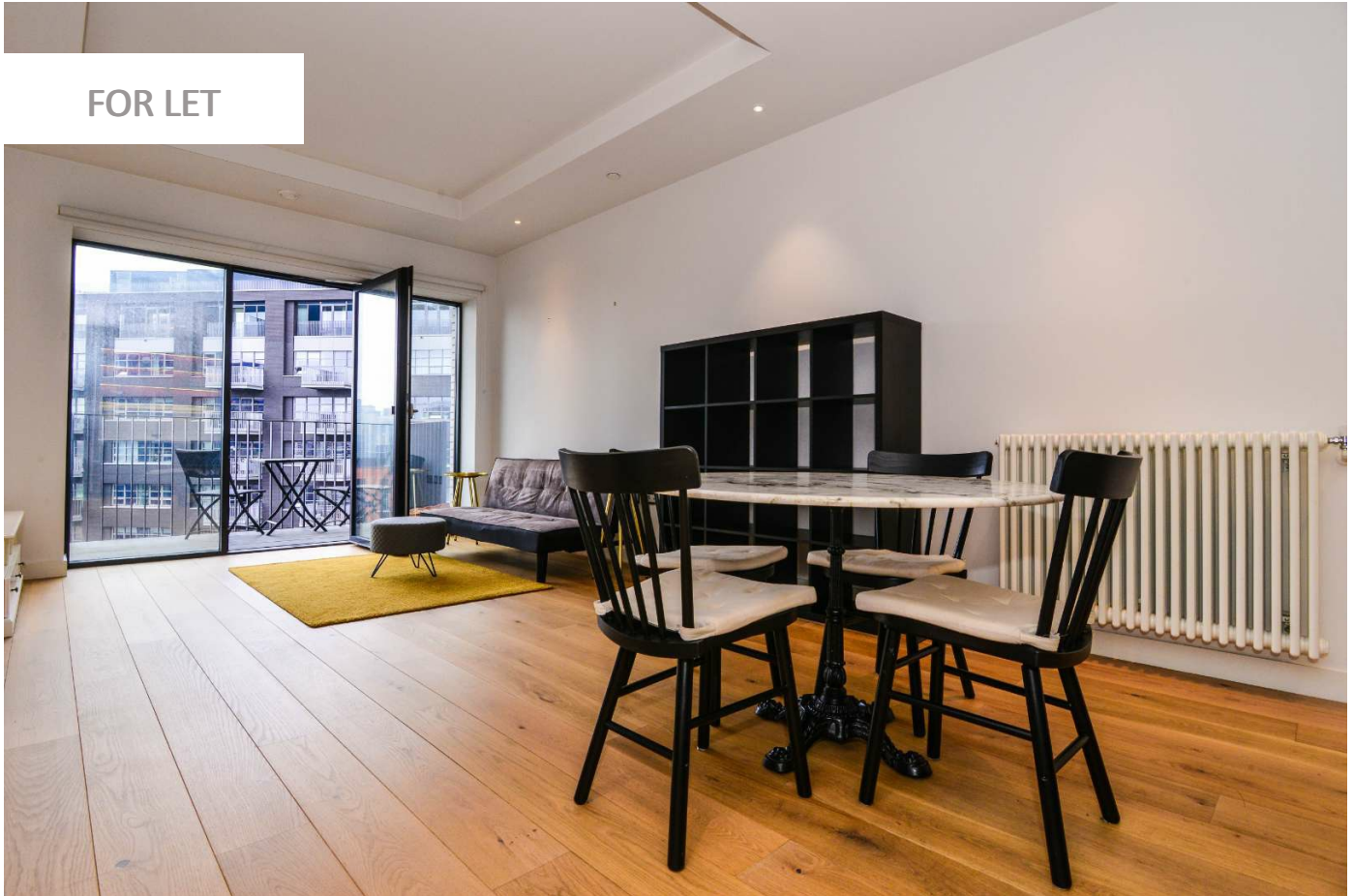
0247 401 2020 | enquiries@globalhouseestates.com

46 BOTANIC SQUARE, CANNING TOWN, LONDON

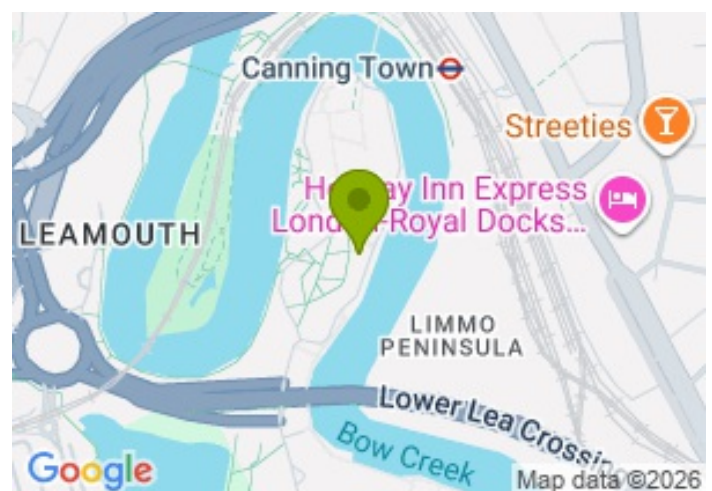
£500.00



FOR LET



- One bedroom modern 12th floor apartment
- Stylish interior
- Private balcony
- Pool, gym, concierge and other fantastic residents facilities
- Close to Canning Town Underground Station



Property Description

A 12th floor one bedroom apartment within the ever popular London City Island. With a private balcony, the apartment offers far reaching views over the Thames to the O2 Arena and Canary Wharf. The property is beautifully presented throughout with an open plan kitchen reception room, master bedroom with built in cupboards, a stylish bathroom suite and there is plenty of storage throughout. London City Island offers an array of amenities, coffee shops, restaurants and shops and is moments from Canning Town Underground Station. The Facilities are second to none and include a 24 hour concierge, residents also have access to the high-spec gymnasium, spa & treatment rooms, pools, gardens and even a rooftop for summer film screenings and outdoor sport's matches. Plus the facilities including an indoor pool at the adjacent development, Goodluck Hope.

Viewing

Please contact our Global House Estates Ltd Office on 0207 401 2020 if you wish to arrange a viewing appointment for this property or require further information.

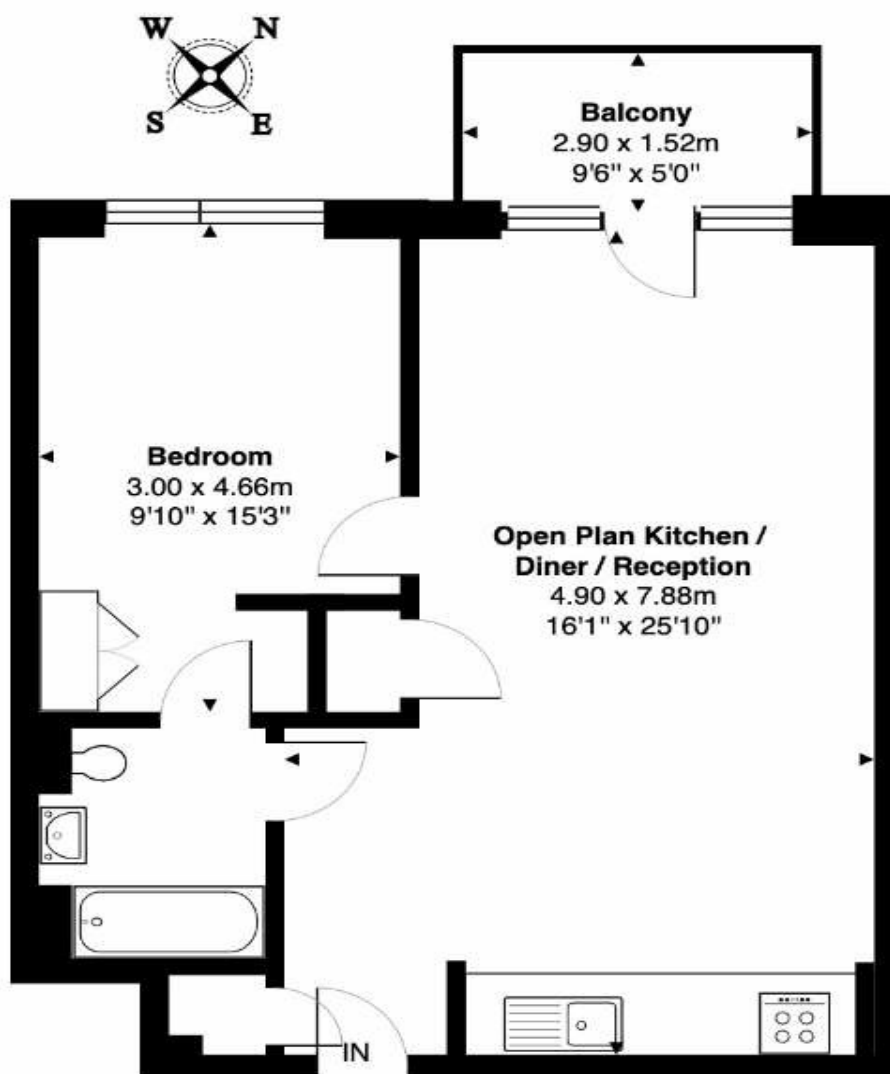
Disclaimer

This website provides information about buying, selling, renting UK property. The information is from reliable sources, but we can't guarantee that it's always accurate. There may be mistakes or changes in the information, such as price, availability, leases, or financing. The square footage is also an estimate and should be confirmed by a professional architect or engineer.

Floor plan

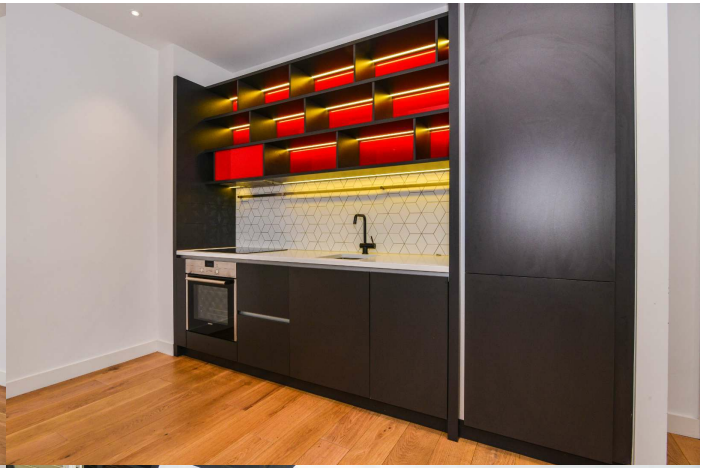
Grantham House, E14

Total Area: 53.9 m² ... 580 ft² (excluding balcony)



12th Floor

This Floor plan is provided without warranty, of any kind.
Bespoke Plans disclaims any warranty including,
without limitation, satisfaction, quality or accuracy of any dimensions







35a St Georges Road, London,
SE1 6EW
+44 (0) 207 401 2020

<https://globalhouseestates.com>

Level 24, Lee Garden One,
33 Hysan Ave, Causeway Bay,
Hong Kong
+852 3963 8411