

0247 401 2020 | [enquiries@globalhouseestates.com](mailto:enquiries@globalhouseestates.com)

## ALLINGTON CLOSE, GREENFORD, LONDON

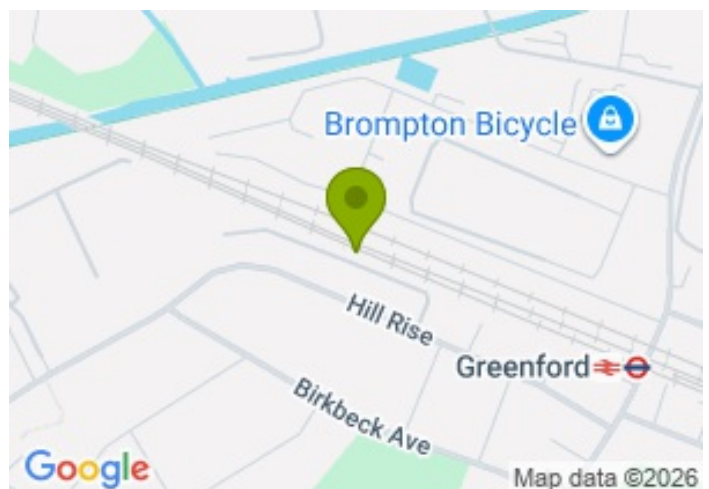
£334.61



FOR LET



- One Bedroom Apartment
- Part Furnished
- New Wooden Floors
- Brand New Kitchen & Bathroom
- Off Street Parking
- 7 minutes walk from Greenford Central line station
- First Floor



## Property Description

A refurbished one double bedroom, first floor apartment set with this secure development with in a short walk to Greenford underground Station. The property benefits from a double bedroom, separate reception room, fully separate bathroom with shower over bath and a Brand New fully fitted kitchen.

Other benefits include wooden flooring throughout, double glazing.

Suitably located within walking distance to Greenford Underground Station, local bus links and shops, A refurbished one double bedroom, first floor apartment set within this secure development, within a short walk to Greenford Underground Station. The property benefits from a double bedroom, separate reception room, fully separate bathroom with shower over bath, and a brand new fully fitted kitchen.

Other benefits include wooden flooring throughout and double glazing.

Suitably located within walking distance to Greenford Underground Station, local bus links, and shops, providing great access to transport links and local amenities, it's a mere 7-minute walk to Central Line and overground stations.

The property is beautifully maintained and includes a communal garden, a dedicated off-road parking space, and ample additional parking on the private street.

All data and information set forth on this website regarding real property, for sale, purchase, rental and/or financing, are from sources regarded as reliable. No warranties are made as to the accuracy of any descriptions and/or other details and such information is subject to errors, omissions, changes of price, tenancies, commissions, prior sales, leases or financing, or withdrawal without notice. Square footages are approximate and may be verified by consulting a professional architect or engineer.

## Viewing

Please contact our Global House Estates Ltd Office on 0207 401 2020 if you wish to arrange a viewing appointment for this property or require further information.

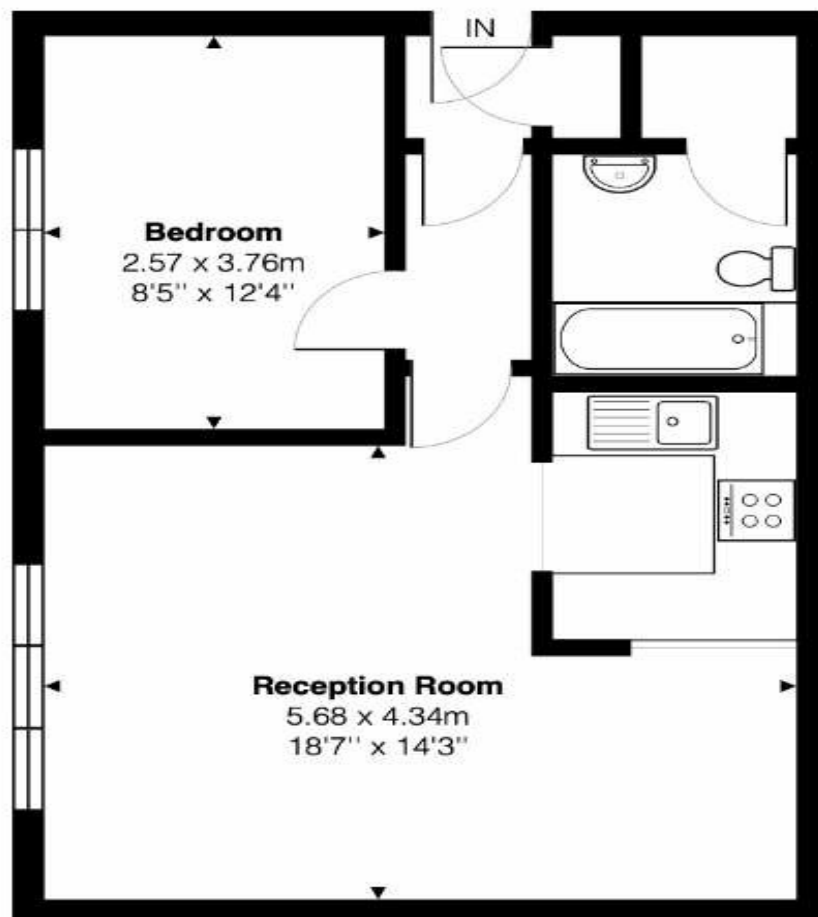
## Disclaimer

This website provides information about buying, selling, renting UK property. The information is from reliable sources, but we can't guarantee that it's always accurate. There may be mistakes or changes in the information, such as price, availability, leases, or financing. The square footage is also an estimate and should be confirmed by a professional architect or engineer.

# Floor plan

## Allington Close, UB6

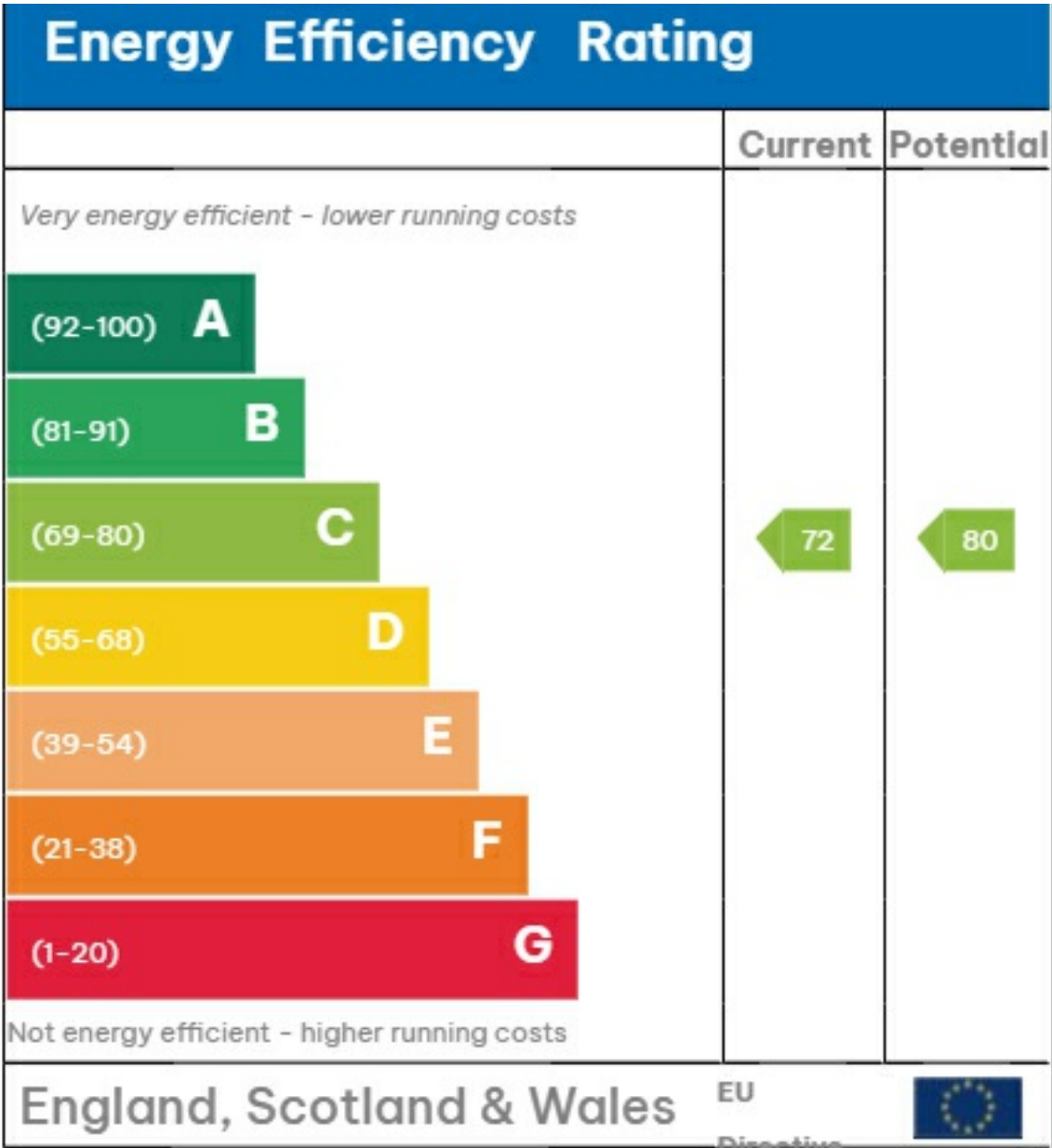
Total Area: 46.9 m<sup>2</sup> ... 505 ft<sup>2</sup>



First Floor



This Floorplan is provided without warranty, of any kind.  
Bespoke Plans disclaims any warranty including,  
without limitation, satisfaction, quality or accuracy of any dimensions









35a St Georges Road, London,  
SE1 6EW  
+44 (0) 207 401 2020

<https://globalhouseestates.com>

Level 24, Lee Garden One,  
33 Hysan Ave, Causeway Bay,  
Hong Kong  
+852 3963 8411