

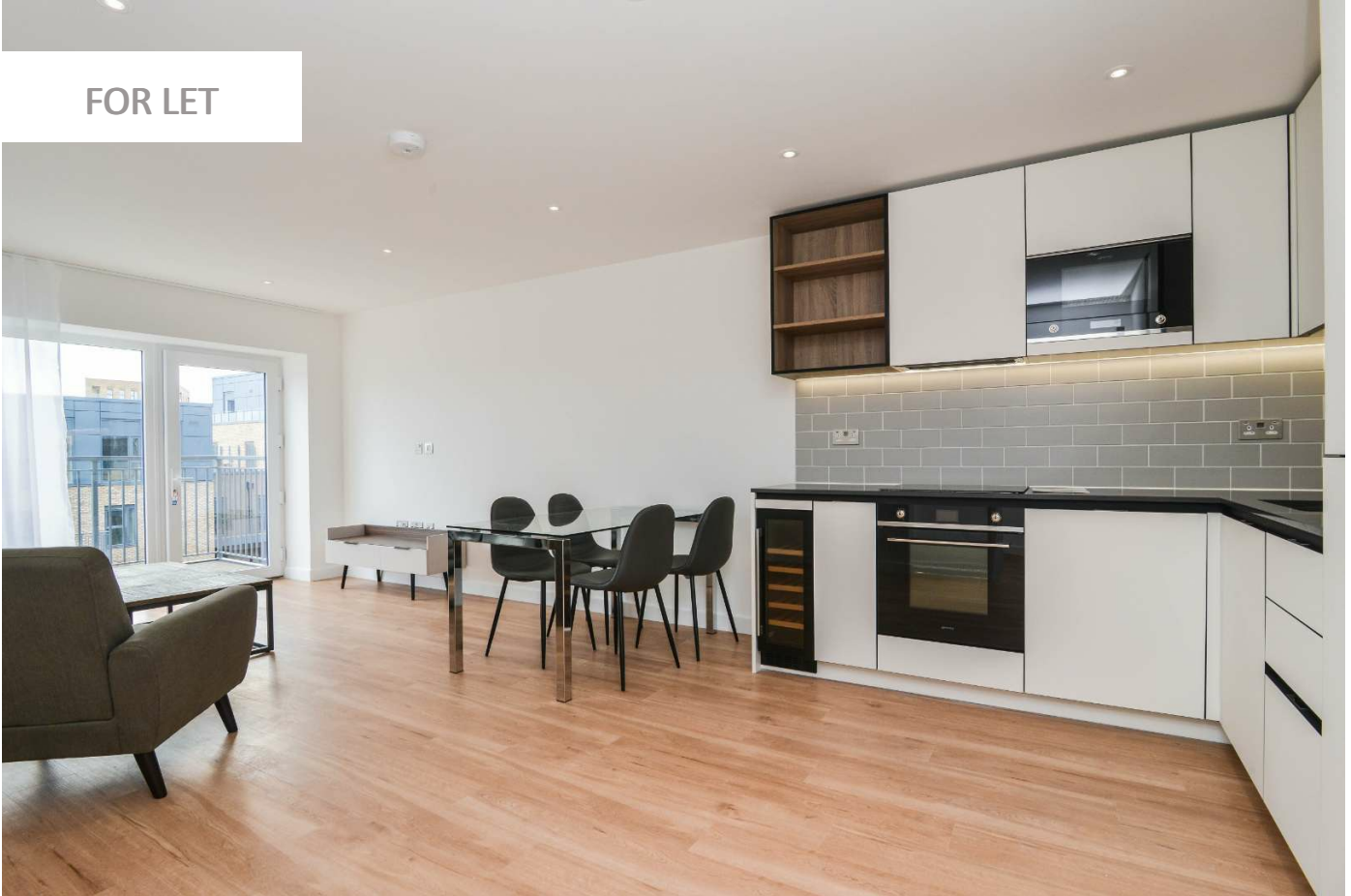
0247 401 2020 | enquiries@globalhouseestates.com

15 BEAUFORT PARK, COLINDALE, LONDON

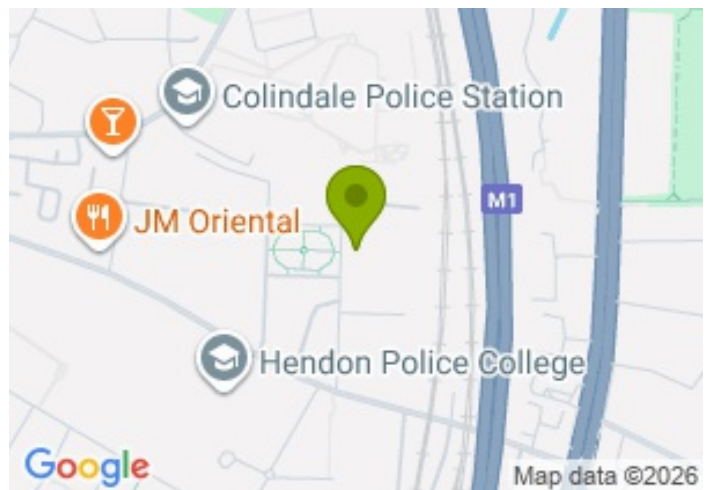
£560.00



FOR LET



- Two double bedroom, 7th floor apartment
- Two bathrooms
- Private terrace
- Residents gym, swimming pool and spa
- Secure underground parking
- Ideal for a professional couple or family



Property Description

An opportunity to rent a wonderful two double bedroom, two bathroom apartment in the recently built Fermont House in the St George development, Beaufort Park. The apartment is on the 7th floor and offers lovely views across the roof tops and down to the residents garden below. There is a private south facing balcony and the apartment is bathed in natural light. The property has a high quality internal finish with a stunning open plan, integrated kitchen, high quality bathrooms and there is engineered wood flooring in the living space and luxurious carpet in both bedrooms. Included with this apartment is secure underground parking.

Further benefits include the on-site residents' gym, swimming pool, spa and Jacuzzi, residents courtyard garden as well as a private gated garden. There is video entry system, refuse shoots on each floor, CCTV throughout the building and automatic lifts.

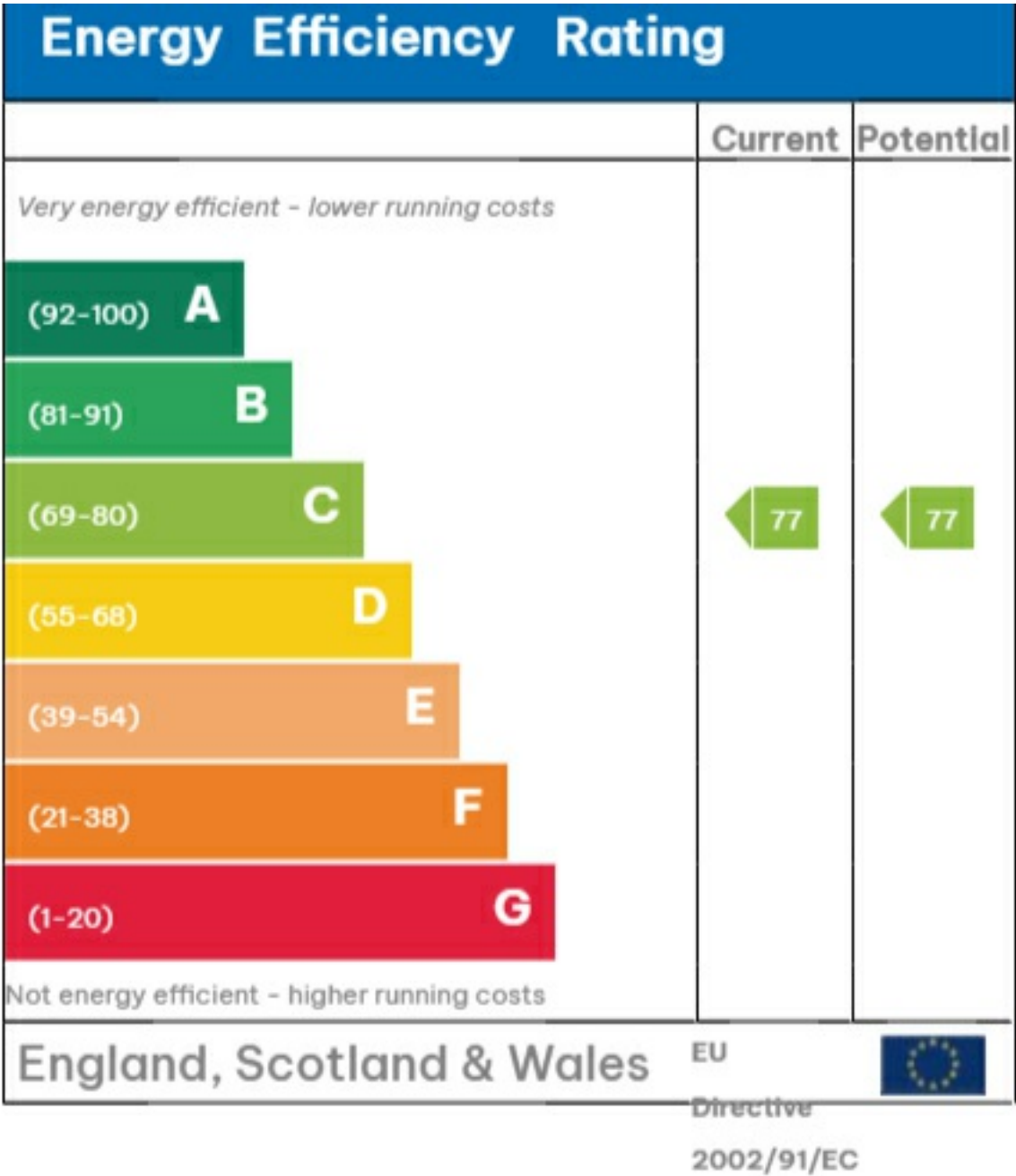
Viewing

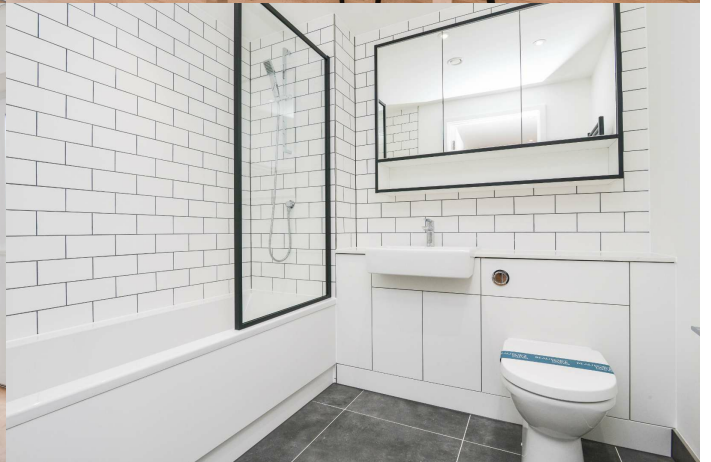
Please contact our Global House Estates Ltd Office on 0207 401 2020 if you wish to arrange a viewing appointment for this property or require further information.

Disclaimer

This website provides information about buying, selling, renting UK property. The information is from reliable sources, but we can't guarantee that it's always accurate. There may be mistakes or changes in the information, such as price, availability, leases, or financing. The square footage is also an estimate and should be confirmed by a professional architect or engineer.

EPC

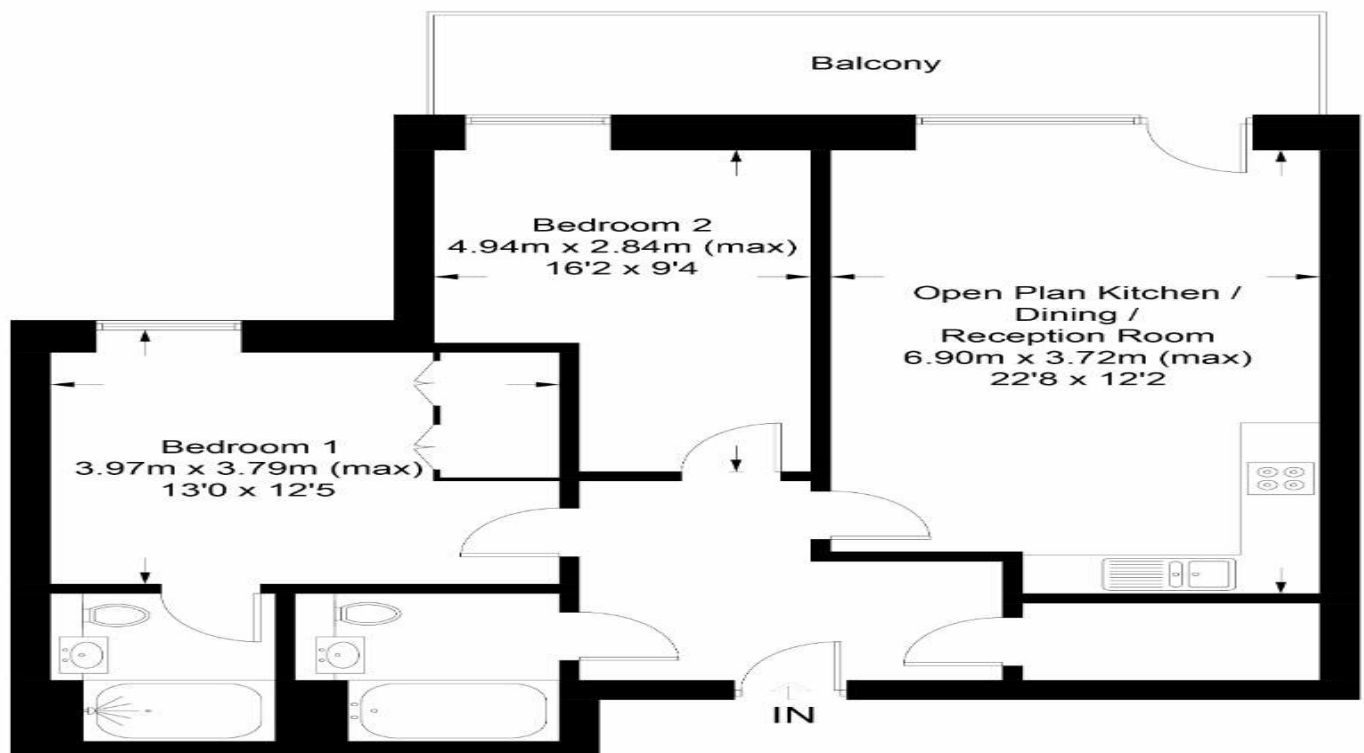






Fermont House, NW9

Approximate Gross Internal Area = 75.7 sq m / 815 sq ft



This floor plan is for representation purposes only and is not drawn to scale.

The Gross Internal Area includes outbuildings shown on the plan.

Whilst every attempt has been made to ensure the accuracy of the plan measurements of doors, windows and rooms are approximate only and should be checked before making any decisions reliant upon them.

Copyright Bespokeplans.co.uk (ID802494)

35a St Georges Road, London,
SE1 6EW
+44 (0) 207 401 2020

<https://globalhouseestates.com>

Level 24, Lee Garden One,
33 Hysan Ave, Causeway Bay,
Hong Kong
+852 3963 8411