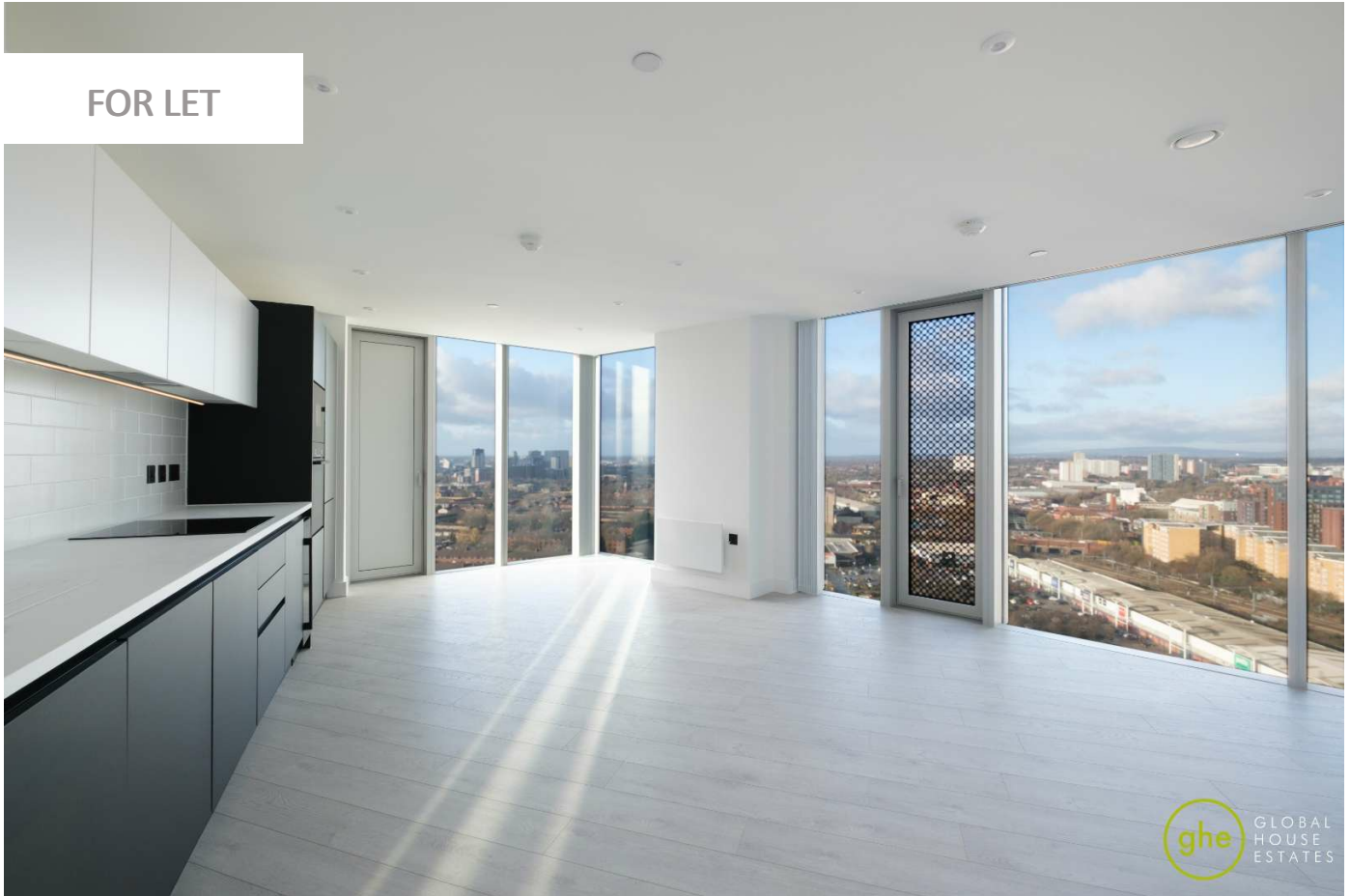


**VISTA RIVER TOWER, MANCHESTER, UK**

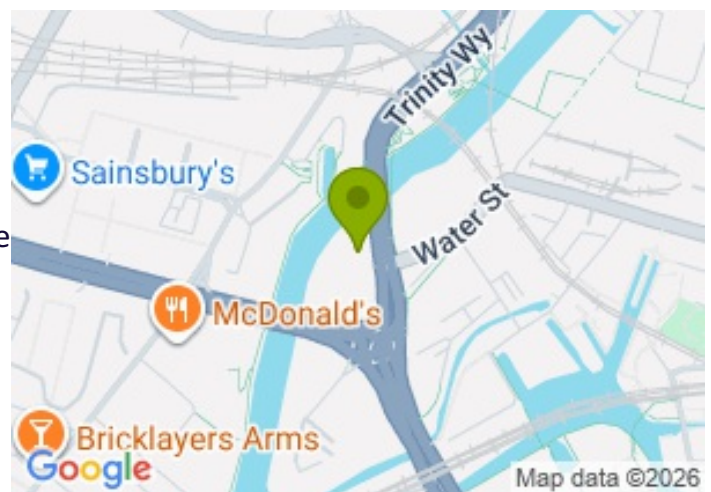
£1,900.00



**FOR LET**



- A brand new 2 bedroom apartment - Available Now
- Including one allocated indoor parking with an EV Charger
- Furnished or unfurnished - landlord is flexible
- 24/7 Concierge
- State-of-the-art gym and wellness suite
- Cinema room & entertainment spaces
- Co-working lounges & private workspaces
- Rooftop terraces, landscaped gardens &



outdoor fitness areas

## Property Description

A brand-new two bedroom apartment in the highly sought-after Vista River Gardens, offering contemporary riverside living just minutes from Manchester city centre. One allocated indoor parking with an EV Charger is included.

Finished to an exceptional standard throughout, the apartment features a stylish open-plan kitchen and living area enhanced by floor-to-ceiling windows, flooding the space with natural light. The modern kitchen is fully equipped with integrated Bosch appliances, including a wine fridge, making it ideal for modern living and entertaining.

Both bedrooms are well proportioned, with the master bedroom benefiting from fitted wardrobes and a luxurious en-suite shower room. The main bathroom is finished to a high, hotel-style standard with premium fixtures and fittings.

Residents enjoy access to an outstanding range of on-site amenities, including a gym, fitness and spin studios, cinema room, games room, landscaped wellness deck with climbing wall, private dining suite, residents' lounge, dog spa, co-working and meeting spaces, as well as a podcast and content creation studio. Landscaped communal gardens provide seating areas, BBQ spaces, play zones and generous green areas.

Ideally located within walking distance of Spinningfields and Deansgate, with excellent transport links nearby, this apartment offers luxury living in one of Manchester's most desirable riverside developments.

It is ideal for professionals, small families and students seeking both convenience and prestige. Please contact GHE to book a viewing!

All data and information set forth on this website regarding real property, for sale, purchase, rental and/or financing, are from sources regarded as reliable. No warranties are made as to the accuracy of any descriptions and/or other details and such information is subject to errors, omissions, changes of price, tenancies, commissions, prior sales, leases or financing, or withdrawal without notice. Square footages are approximate and may be verified by consulting a professional architect or engineer.

## Viewing

Please contact our Global House Estates Ltd Office on 0207 401 2020 if you wish to arrange a viewing appointment for this property or require further information.

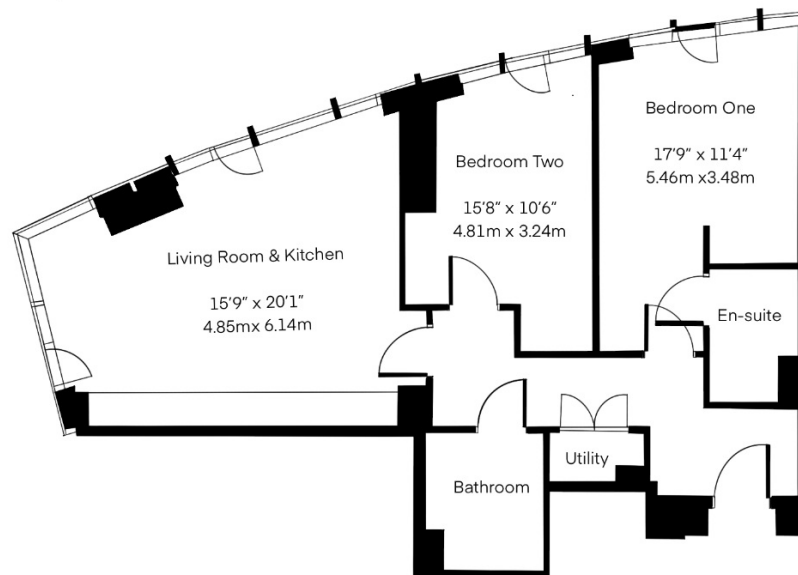
## Disclaimer

This website provides information about buying, selling, renting UK property. The information is from reliable sources, but we can't guarantee that it's always accurate. There may be mistakes or

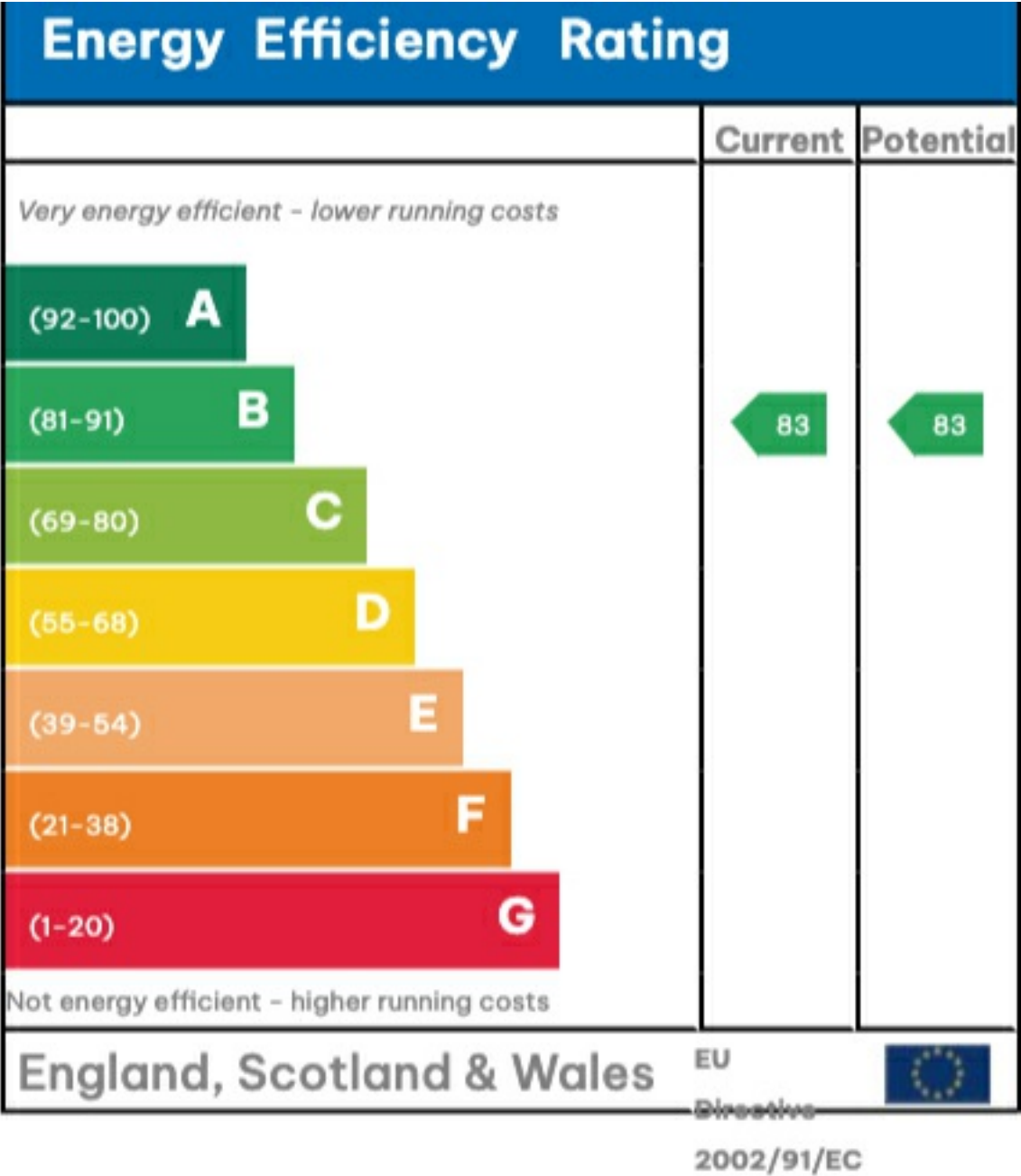
changes in the information, such as price, availability, leases, or financing. The square footage is also an estimate and should be confirmed by a professional architect or engineer.

# Floor plan

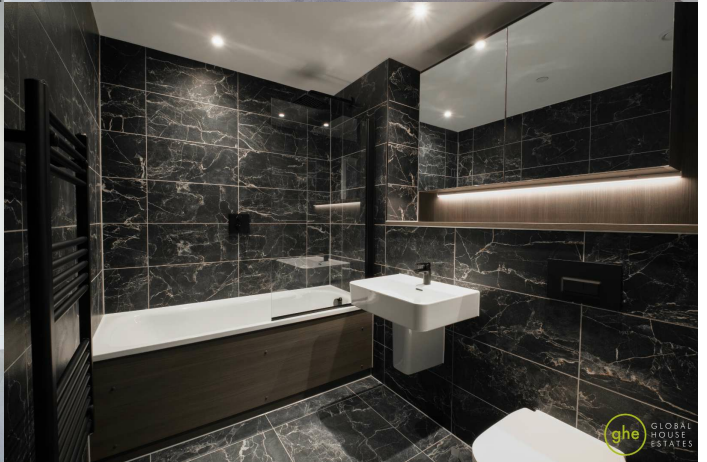
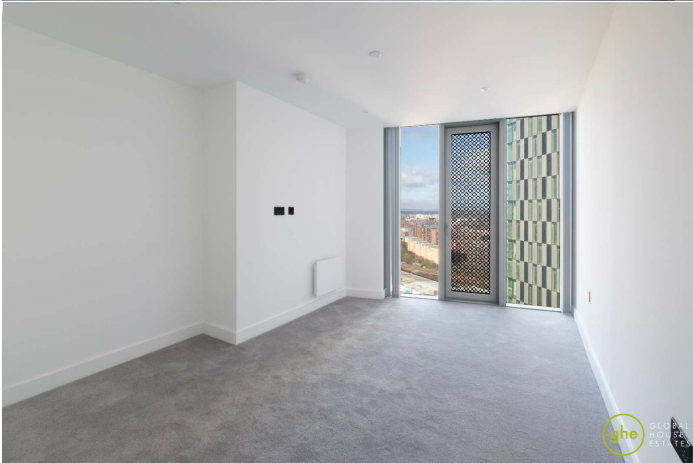
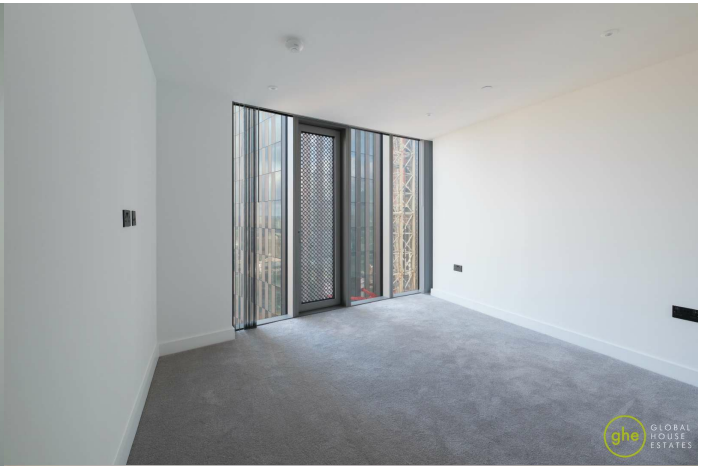
Approx. Total Area  
878 sqft / 81sqm



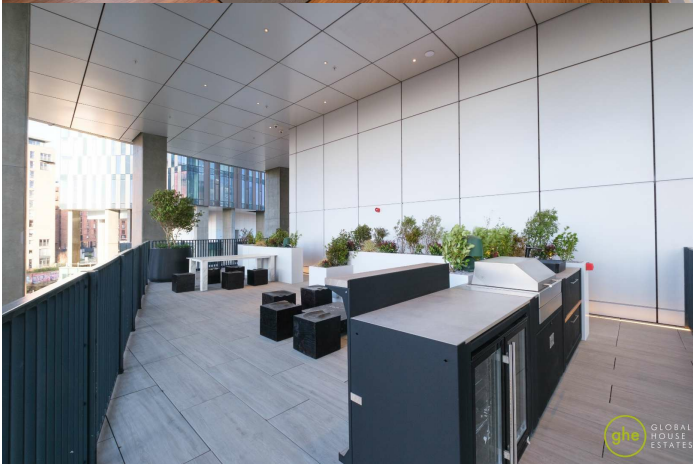
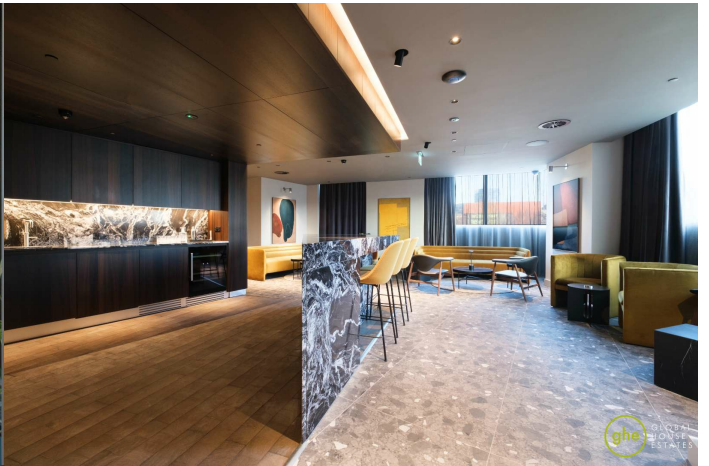
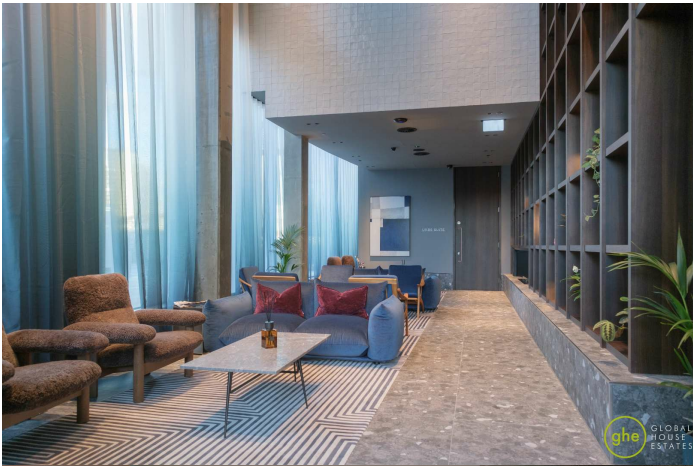
This floor plan is illustrative purposes only. It is not drawn to scale. Any measurements, floor areas (including any total floor area), openings and orientation are approximate. No details are guaranteed, they cannot be relied upon for any purpose and they do not form part of any agreement. No liability is taken for any error, omission or misstatement. A party must rely upon its own inspection(s).

















35a St Georges Road, London,  
SE1 6EW  
+44 (0) 207 401 2020

<https://globalhouseestates.com>

Level 24, Lee Garden One,  
33 Hysan Ave, Causeway Bay,  
Hong Kong  
+852 3963 8411