

0247 401 2020 | enquiries@globalhouseestates.com

ST DAVIDS SQUARE, ISLE OF DOGS, LONDON

£426.92



FOR LET



- Two Bedroom Apartment
- Under Ground Parking
- Balcony
- Modern Kitchen
- Swimming Pool & Gymnasium
- 24 Hour Concierge
- Wooden Floors
- Next Mudchute To DLR



Property Description

Offering good-sized living space in a water-side development, this neutrally decorated two bedroom apartment boasts a modern feel and benefits from a superb balcony offering desirable views.

The property comprises generous reception room with access to the balcony, fully equipped modern kitchen, spacious master bedroom with a smart bathroom, property also benefits from a extra study/dressing room from an underground parking, swimming pool, gymnasium and 24 hour concierge. St David's Square is perfectly situated for gentle river walks and swift access into vibrant Canary Wharf where there is an excellent selection of shops, bars and dock-side attractions. Local transport links include Island Garden (DLR) as well as several convenient roads for routes into and out of London.

All data and information set forth on this website regarding real property, for sale, purchase, rental and/or financing, are from sources regarded as reliable. No warranties are made as to the accuracy of any descriptions and/or other details and such information is subject to errors, omissions, changes of price, tenancies, commissions, prior sales, leases or financing, or withdrawal without notice. Square footages are approximate and may be verified by consulting a professional architect or engineer.

Viewing

Please contact our Global House Estates Ltd Office on 0207 401 2020 if you wish to arrange a viewing appointment for this property or require further information.

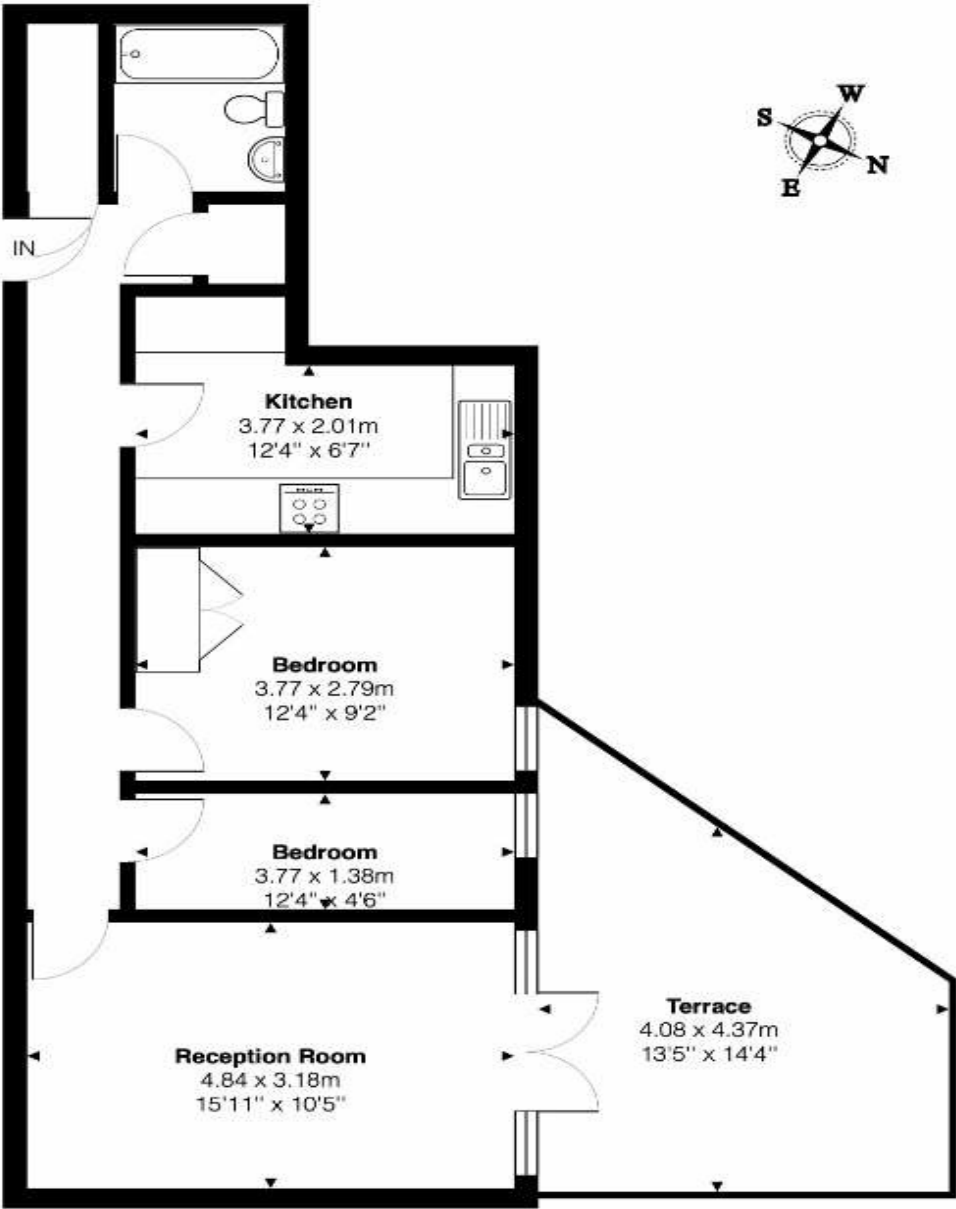
Disclaimer

This website provides information about buying, selling, renting UK property. The information is from reliable sources, but we can't guarantee that it's always accurate. There may be mistakes or changes in the information, such as price, availability, leases, or financing. The square footage is also an estimate and should be confirmed by a professional architect or engineer.

Floor plan

St Davids Square, E14

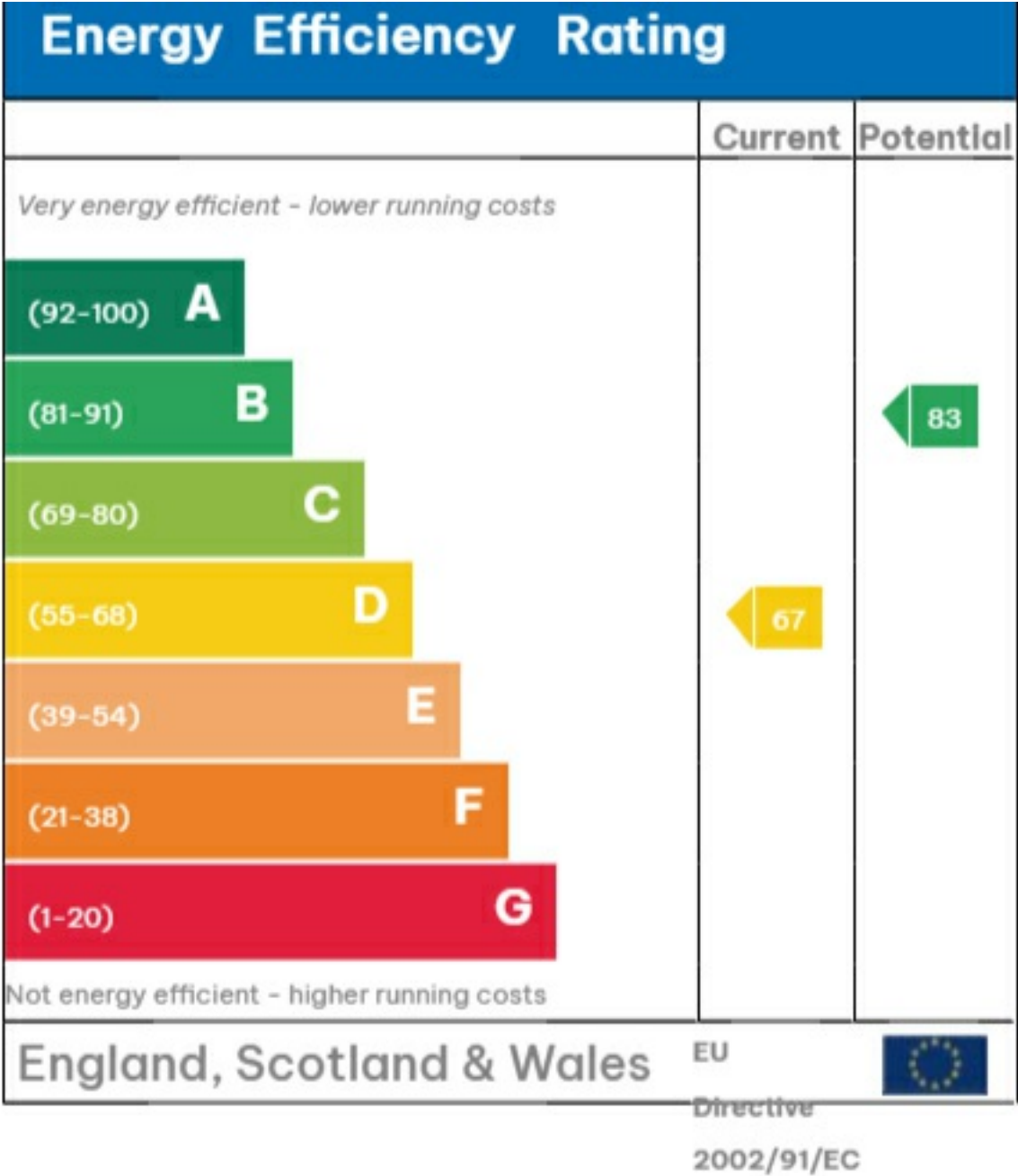
Total Area: 58.1 m² ... 626 ft² (excluding terrace)

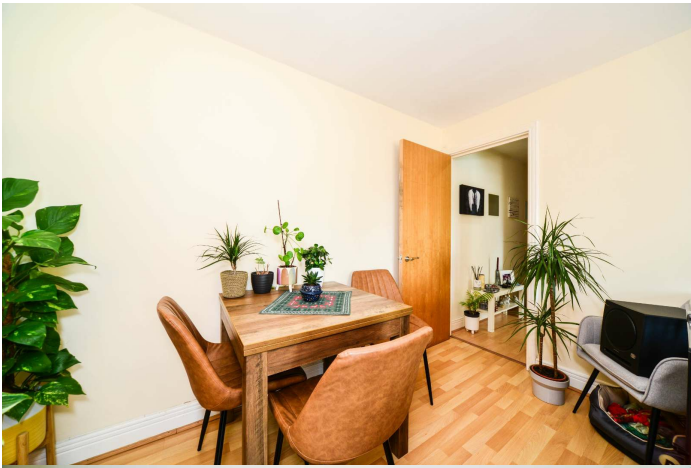


First Floor

This Floor plan is provided without warranty, of any kind.
Bespoke Plans disclaims any warranty including,
without limitation, satisfaction, quality or accuracy of any dimensions

EPC







35a St Georges Road, London,
SE1 6EW
+44 (0) 207 401 2020

<https://globalhouseestates.com>

Level 24, Lee Garden One,
33 Hysan Ave, Causeway Bay,
Hong Kong
+852 3963 8411