

0247 401 2020 | enquiries@globalhouseestates.com

LANCASTER DRIVE, CANARY WHARF, LONDON

£485.00



FOR LET



- Two Bedroom Apartment
- Dulpex Apartment
- Next To Canary Wharf
- Fitted Wardrobes
- Furnished
- Off Street Parking
- Large Kitchen
- Private Balcony



Property Description

A delightful two double bedroom duplex apartment only a short walk to Canary Wharf is set on second floor (top floor) of this dockside development. Property comprises a bright and spacious reception room with access onto a private covered balcony, large fully fitted kitchen, modern bathroom, two double bedrooms both with fitted wardrobes and ample storage. Offering stunning views towards Canary Wharf, this apartment is available furnished and has off Street parking. Lancaster Drive is located within close proximity to Canary Wharf and Blackwall DLR station.

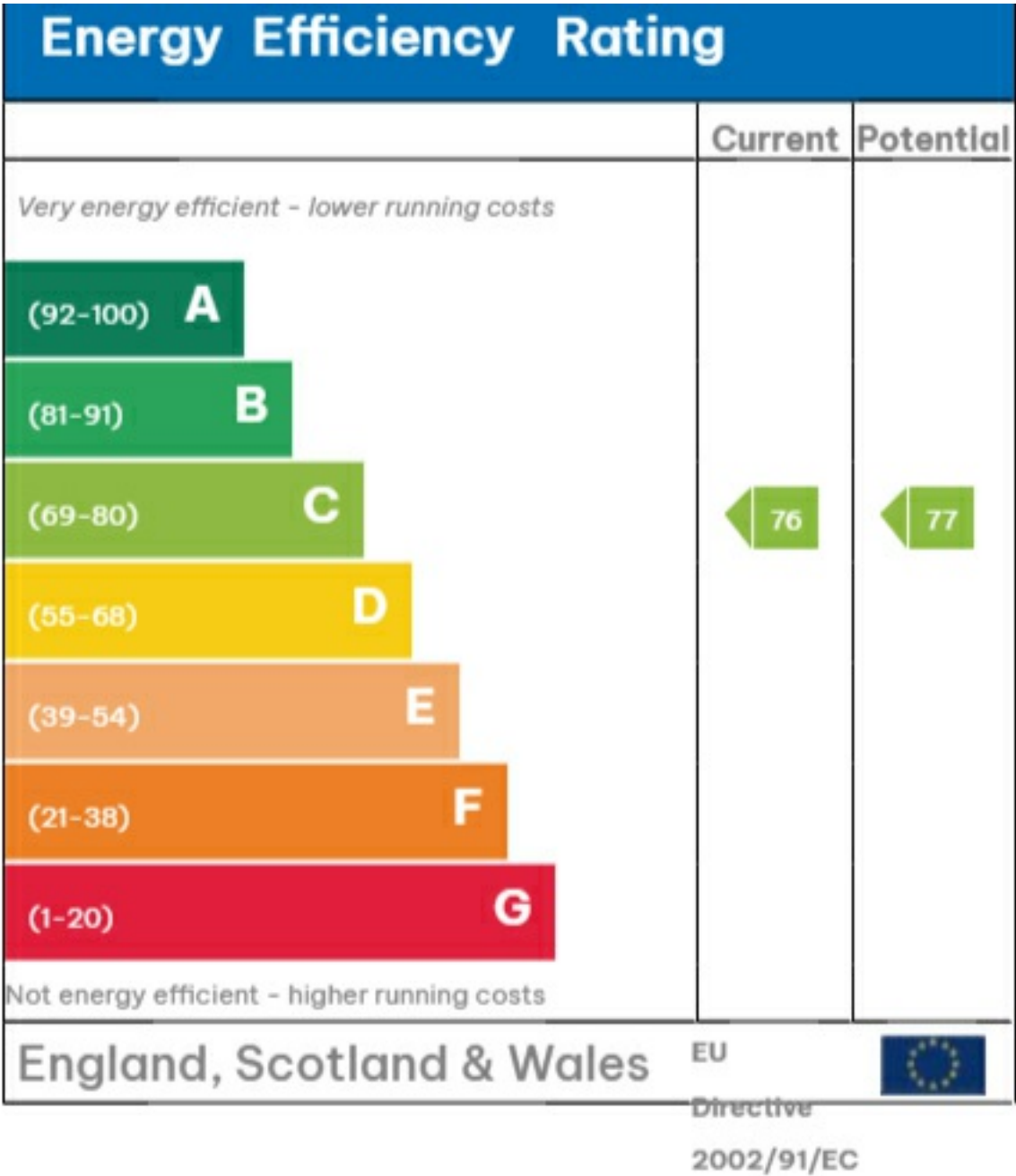
Viewing

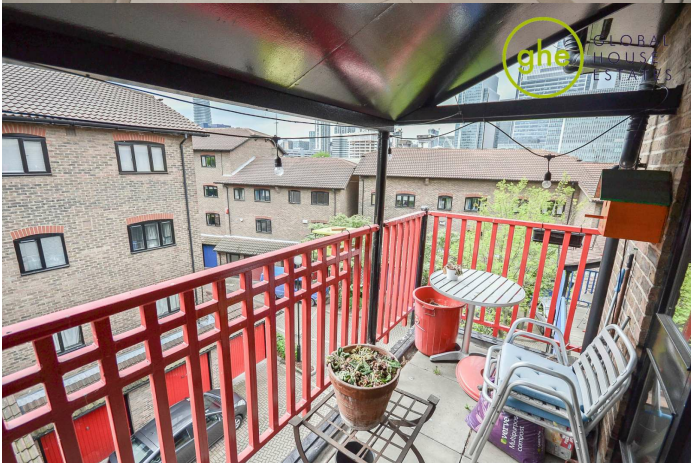
Please contact our Global House Estates Ltd Office on 0207 401 2020 if you wish to arrange a viewing appointment for this property or require further information.

Disclaimer

This website provides information about buying, selling, renting UK property. The information is from reliable sources, but we can't guarantee that it's always accurate. There may be mistakes or changes in the information, such as price, availability, leases, or financing. The square footage is also an estimate and should be confirmed by a professional architect or engineer.

EPC









GLOBAL
HOUSE
ESTATES



35a St Georges Road, London,
SE1 6EW
+44 (0) 207 401 2020

<https://globalhouseestates.com>

Level 24, Lee Garden One,
33 Hysan Ave, Causeway Bay,
Hong Kong
+852 3963 8411