

0247 401 2020 | [enquiries@globalhousestates.com](mailto:enquiries@globalhousestates.com)

## VICTORIA WHARF, BETHNAL GREEN, LONDON

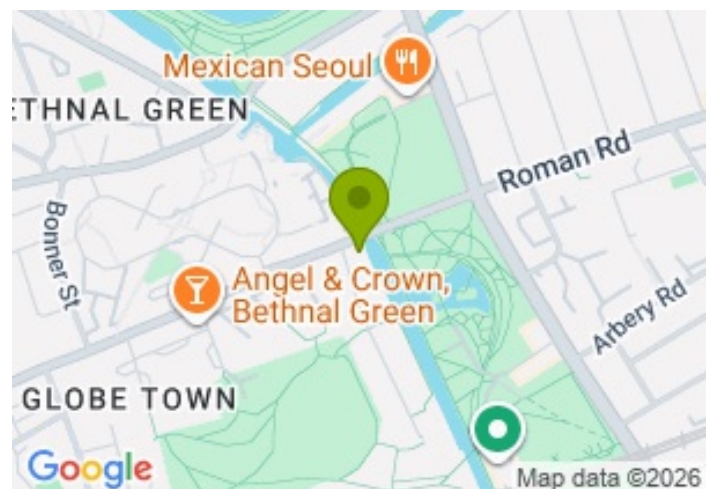
£634.61



FOR LET



- Two Double Bedroom Apartment
- Stunning Views
- Wooden Flooring
- Secure Underground Parking
- Two Balconies
- Great Transport Links
- Two Bathrooms
- Concierge Service



## Property Description

Placed majestically beside the Regent's Canal and surrounded by acres of parkland, this unique 990 sq ft beautifully designed on the 9th floor two bedroom apartment of Victoria Wharf boast simply stunning urban living. Property benefits from a large living space wooden floors with floor to ceiling windows with stunning views of Victoria park and Canary Wharf, Stylish open plan kitchen, two double bedrooms, two bathrooms (one en-suite) and two balconies that enjoys a pleasant outlooks. Private Secure underground parking for one car included. Moments from Victoria Park Village and Bow Wharf with lovely boutique shops, restaurants and bars. Fantastic transport links with both Bethnal Green and Mile End (Central Line) stations offering swift access to all of central London.

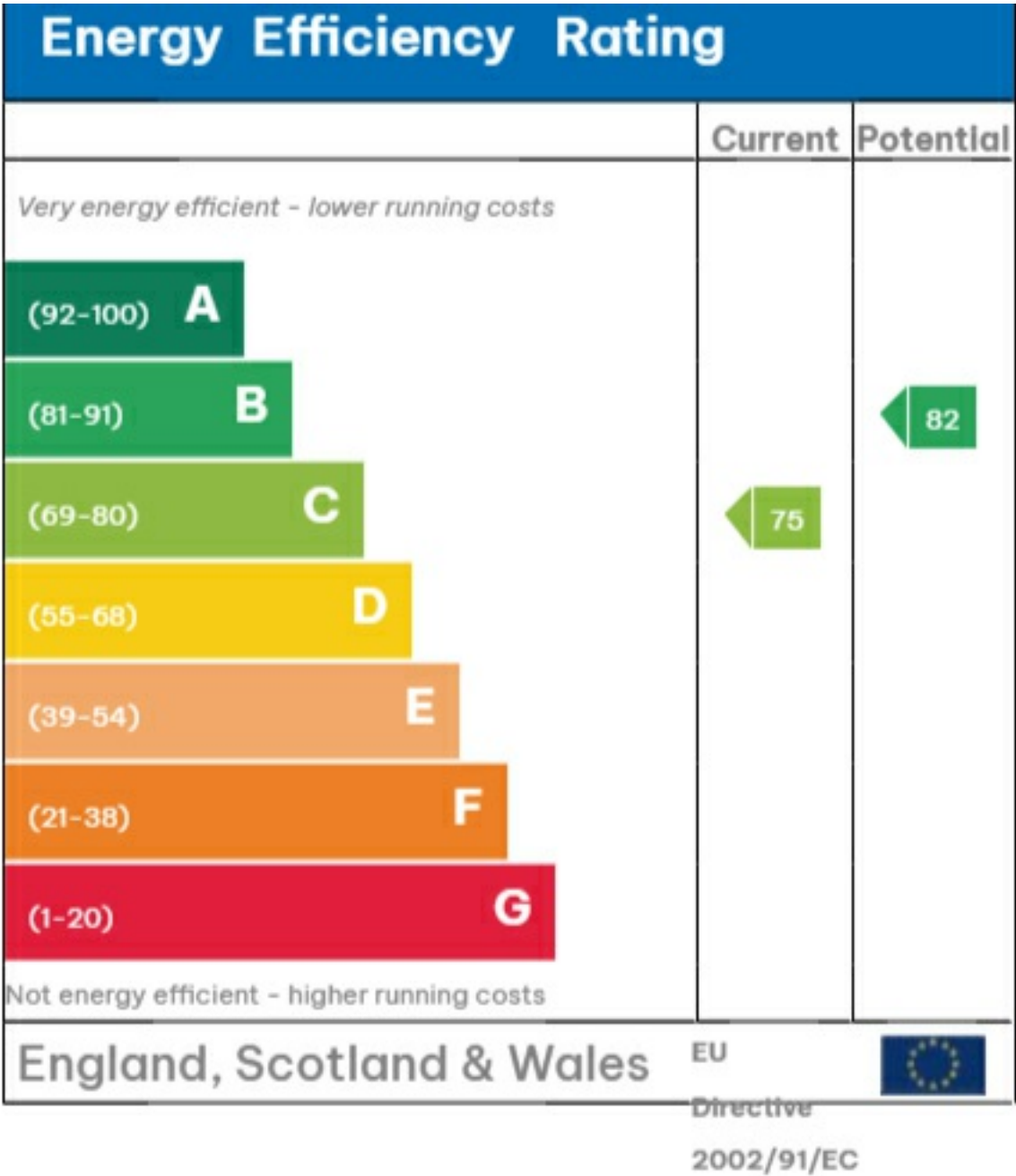
## Viewing

Please contact our Global House Estates Ltd Office on 0207 401 2020 if you wish to arrange a viewing appointment for this property or require further information.

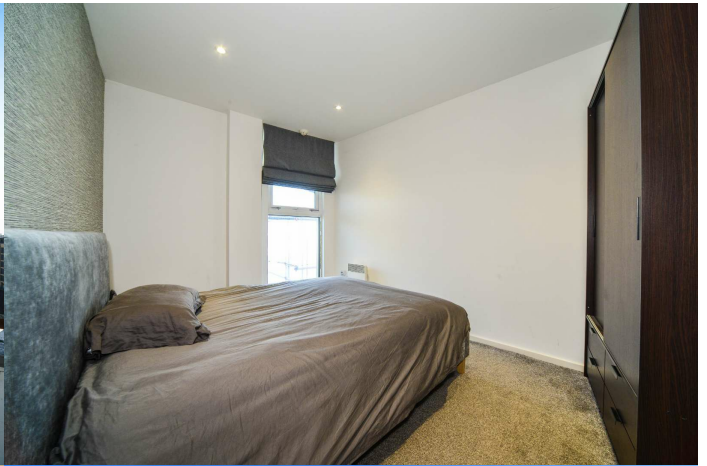
## Disclaimer

This website provides information about buying, selling, renting UK property. The information is from reliable sources, but we can't guarantee that it's always accurate. There may be mistakes or changes in the information, such as price, availability, leases, or financing. The square footage is also an estimate and should be confirmed by a professional architect or engineer.

EPC









35a St Georges Road, London,  
SE1 6EW  
+44 (0) 207 401 2020

<https://globalhouseestates.com>

Level 24, Lee Garden One,  
33 Hysan Ave, Causeway Bay,  
Hong Kong  
+852 3963 8411