

HALF MOON LANE, HERNE HILL, LONDON

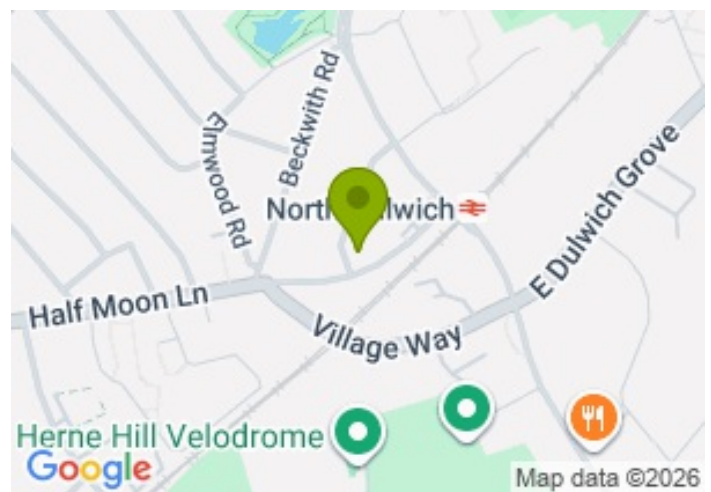
£438.46



FOR LET



- Two Bedroom Apartment
- Lovely Period Building
- Large Reception
- Well Presented Bathroom
- Modern Kitchen
- GHC
- Seconds From Transport Links
- Period Features



Property Description

Desirably positioned within a prestigious Victorian house dating back to 1901, this well presented two bed property set on the top floor and only a short walk from North Dulwich Station. Benefiting from a large separate reception room with stunning views, High ceilings, fitted kitchen and modern fitted bathroom, benefiting from a large master bedroom and a second bedroom/studio room, access to large attic space with plenty of storage space.

Half Moon Lane is a tree-lined street, with the delights of Sunray Gardens moments away and also Brockwell Park and Dulwich Park only a 15 minute walk away. Central Herne Hill and Dulwich Village offer a popular selection of restaurants & shopping amenities. North Dulwich railway station is a short stroll away with access to London Bridge and Herne Hill railway station is a 10 minute journey to London Victoria and 12 minutes to London Blackfriars. A delightful home, early viewing is highly recommended.

EPC Grade E, Deposit is £2192.31pcm

Viewing

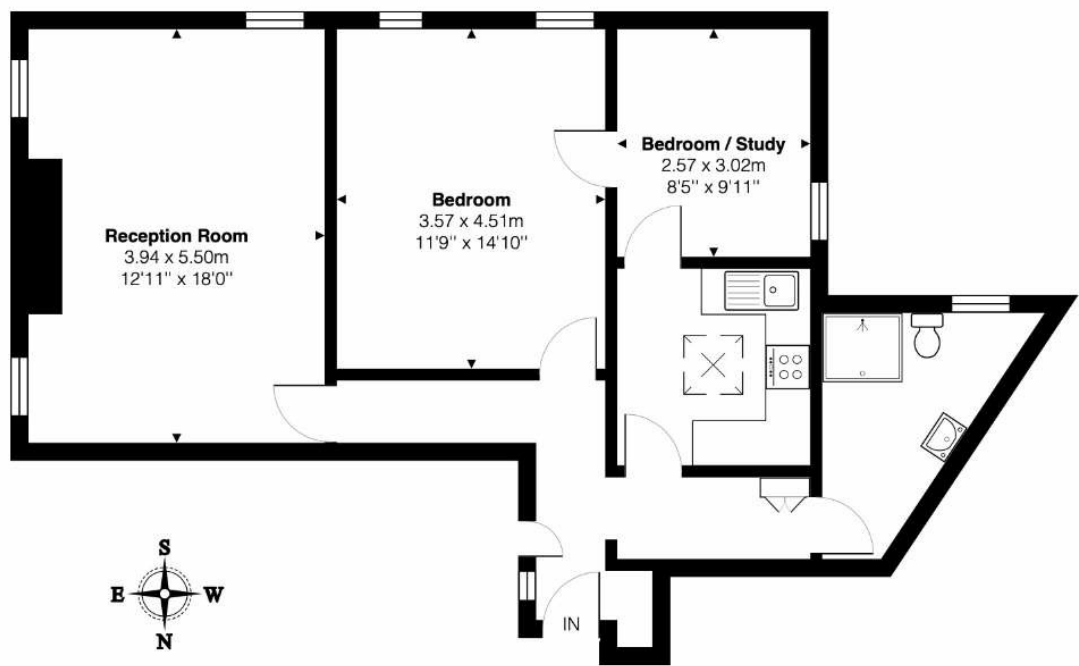
Please contact our Global House Estates Ltd Office on 0207 401 2020 if you wish to arrange a viewing appointment for this property or require further information.

Disclaimer

This website provides information about buying, selling, renting UK property. The information is from reliable sources, but we can't guarantee that it's always accurate. There may be mistakes or changes in the information, such as price, availability, leases, or financing. The square footage is also an estimate and should be confirmed by a professional architect or engineer.

Half Moon Lane, SE24

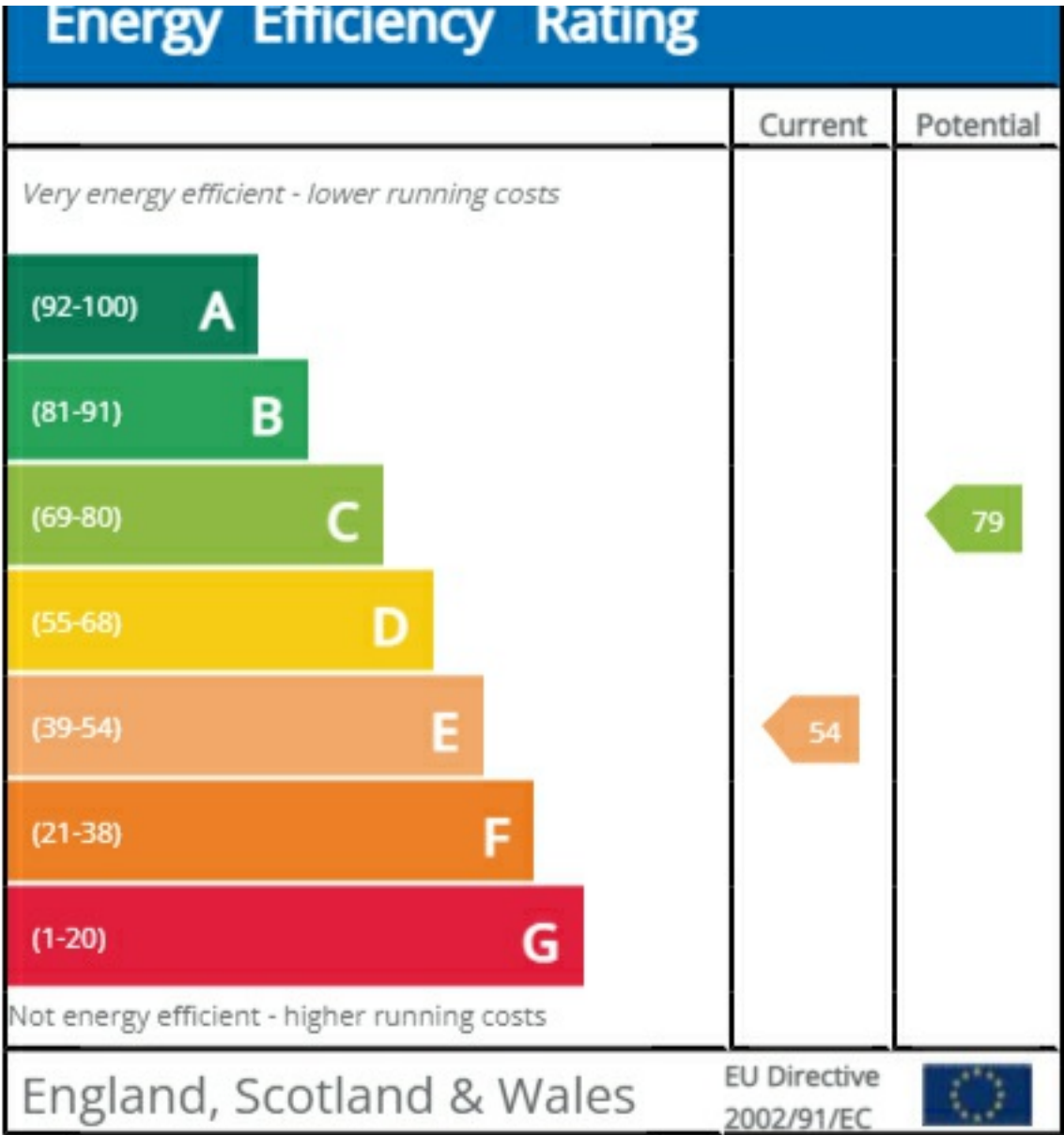
Total Area: 70.8 m² ... 762 ft²



Second Floor

This Floorplan is provided without warranty, of any kind.
Bespoke Plans disclaims any warranty including,
without limitation, satisfaction, quality or accuracy of any dimensions

EPC







35a St Georges Road, London,
SE1 6EW
+44 (0) 207 401 2020

<https://globalhouseestates.com>

Level 24, Lee Garden One,
33 Hysan Ave, Causeway Bay,
Hong Kong
+852 3963 8411