

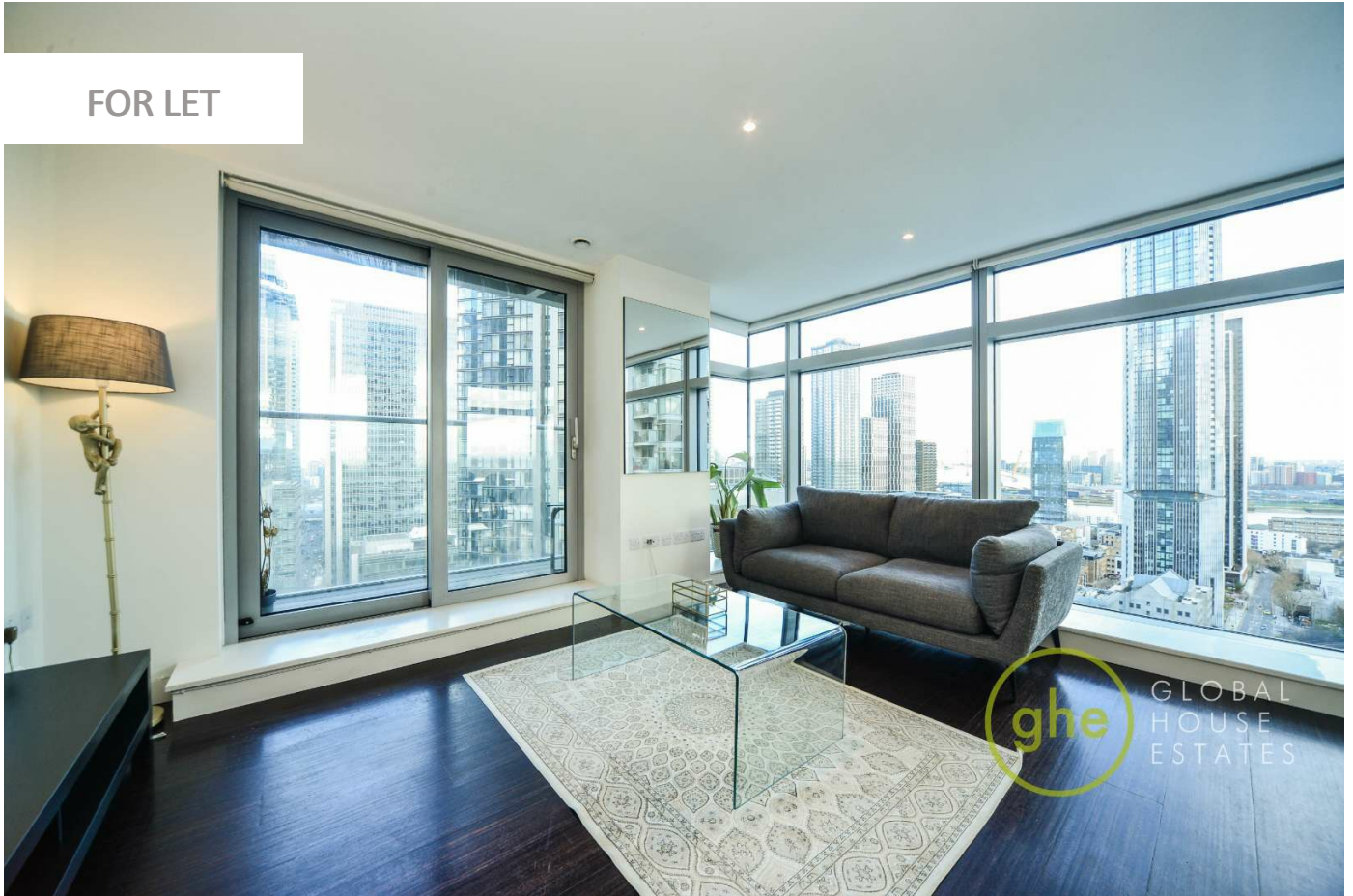
0247 401 2020 | enquiries@globalhouseestates.com

3 PAN PENINSULA SQUARE, CANARY WHARF, LONDON

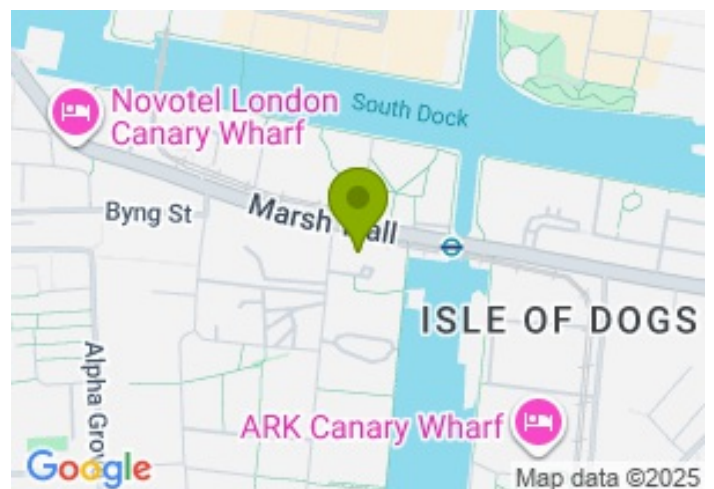
£750.00



FOR LET



- Two double bedroom apartment
- Two bathrooms
- Spectacular triple aspect views
- Residents gym, spa, pool, cinema room and business centre
- Envious location in Canary Wharf



Property Description

A 27th floor two bedroom, two bathroom apartment, offering 821 sq ft of internal space within the impressive Pan Peninsular development by renowned developers, Ballymore. The apartment offers spectacular views with plenty of natural light and a private balcony. Pan Peninsula remains one of the most desirable and highly regarded developments in the area with excellent facilities on-site including gym, pool, sauna/steam rooms, 24hr concierge, residents cinema and business centre.

Located within a very short walk of Canary Wharf centre, with numerous restaurants, bars and shopping mall all on your doorstep. South Quay DLR is the closest station with Canary Wharf, Jubilee Line and Crossrail only a very short walk away.

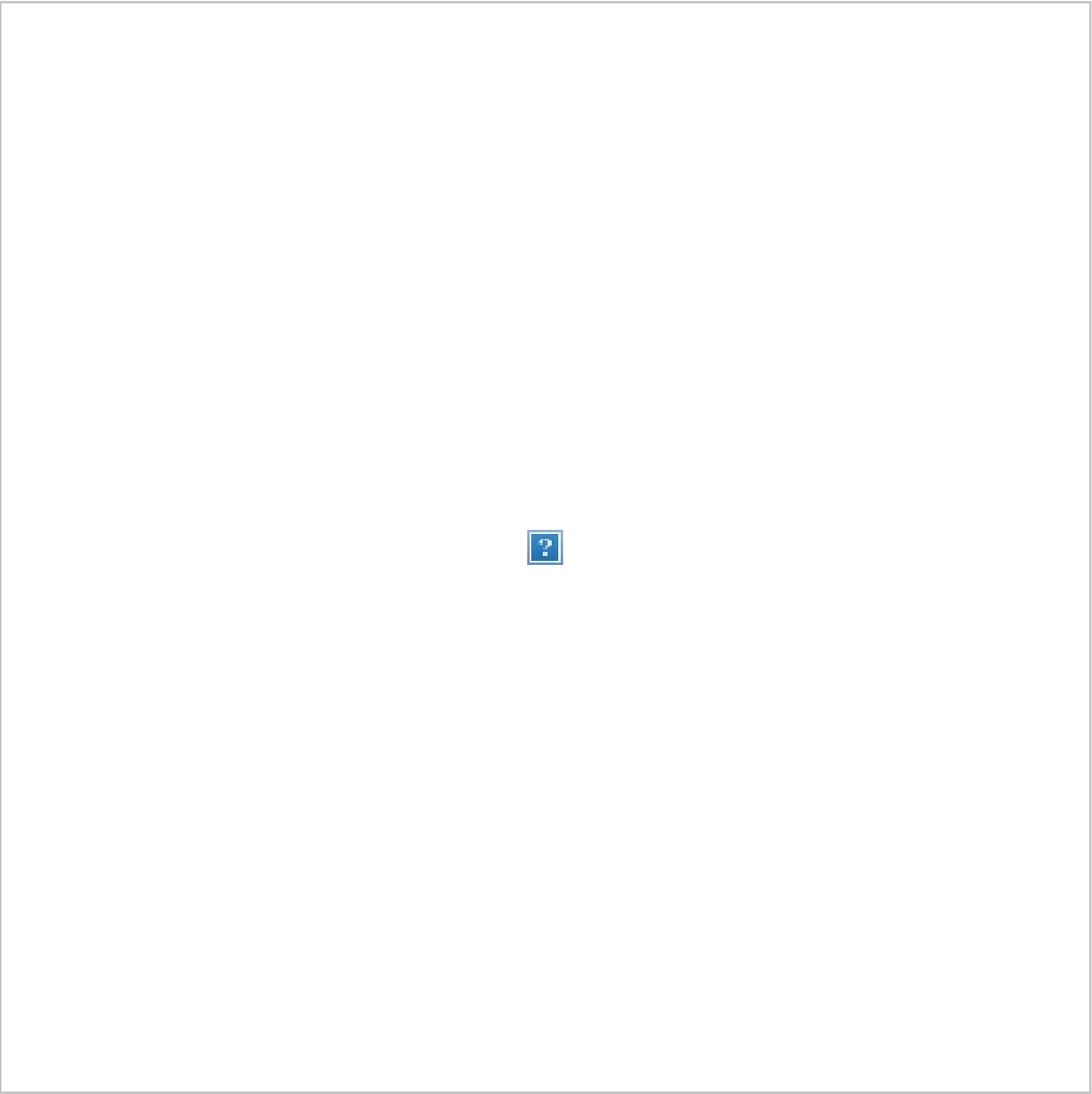
Viewing

Please contact our Global House Estates Ltd Office on 0207 401 2020 if you wish to arrange a viewing appointment for this property or require further information.

Disclaimer

This website provides information about buying, selling, renting UK property. The information is from reliable sources, but we can't guarantee that it's always accurate. There may be mistakes or changes in the information, such as price, availability, leases, or financing. The square footage is also an estimate and should be confirmed by a professional architect or engineer.

Floor plan









35a St Georges Road, London,
SE1 6EW
+44 (0) 207 401 2020

<https://globalhouseestates.com>

Level 24, Lee Garden One,
33 Hysan Ave, Causeway Bay,
Hong Kong
+852 3963 8411