

0247 401 2020 | enquiries@globalhouseestates.com

WHEATSTONE GARDENS, LADBROKE GROVE, LONDON

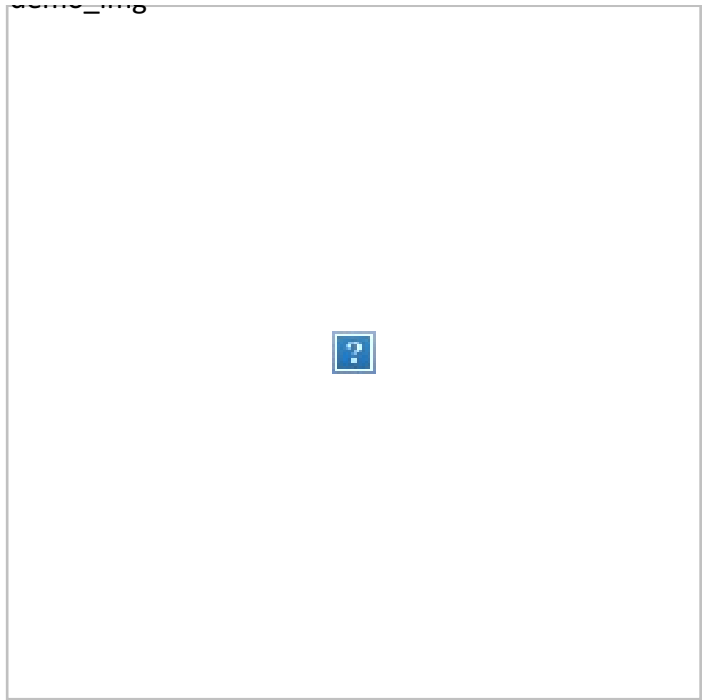
£981.00



FOR LET



- Brand new two double bedroom apartment
- Two bathrooms
- Private balcony
- Private parking space include
- Residents gymnasium and co working space
- Superb location



Property Description

This stunning new apartment is part of an attractive development just off Portobello Road, in one of London's most sought-after neighbourhoods. Surrounded by a great selection of eateries, boutiques, and amenities, the third-floor home features a spacious, light-filled living area with an open-plan kitchen and reception room, plus a private balcony offering lovely views over the park. There are two double bedrooms, with the principal bedroom boasting an ensuite shower room. The building provides lift access, a concierge, and secure parking.

Landlord is flexible to provide furniture

Ladbroke Grove Underground station is just a short walk away, and residents can also enjoy a gym, co-working space, and concierge services.

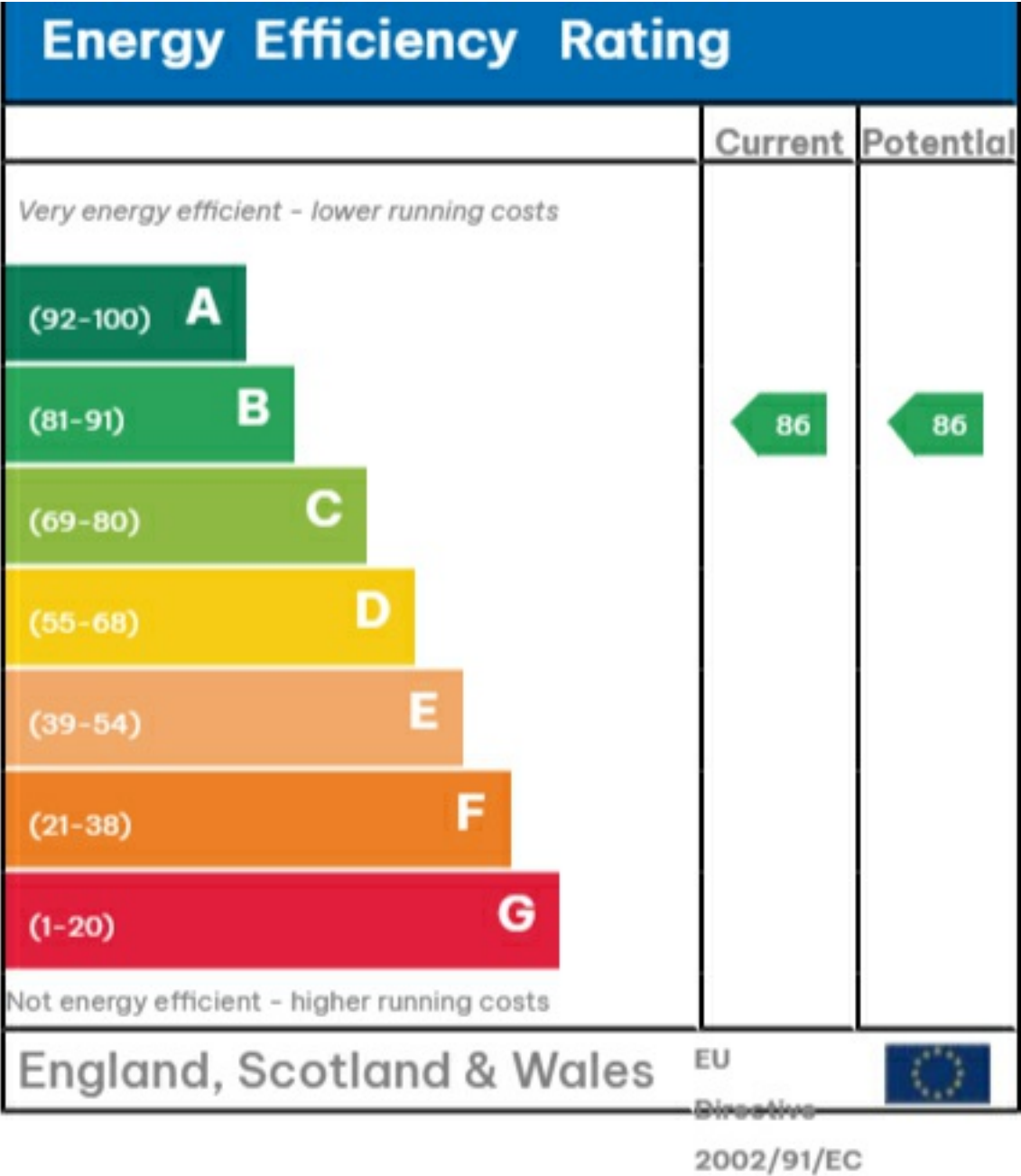
Viewing

Please contact our Global House Estates Ltd Office on 0207 401 2020 if you wish to arrange a viewing appointment for this property or require further information.

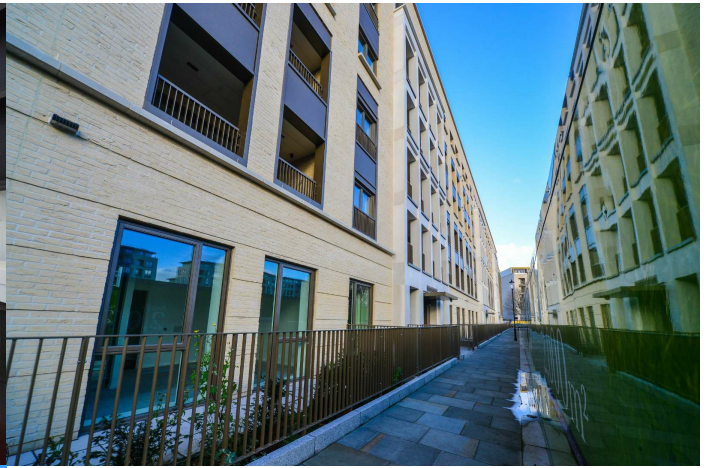
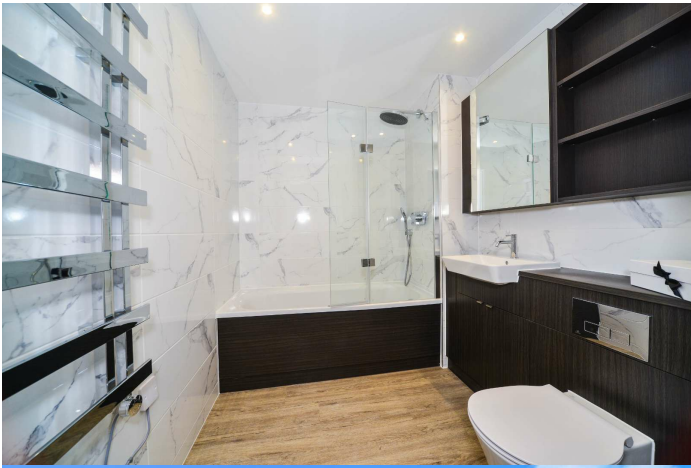
Disclaimer

This website provides information about buying, selling, renting UK property. The information is from reliable sources, but we can't guarantee that it's always accurate. There may be mistakes or changes in the information, such as price, availability, leases, or financing. The square footage is also an estimate and should be confirmed by a professional architect or engineer.

EPC







35a St Georges Road, London,
SE1 6EW
+44 (0) 207 401 2020

<https://globalhouseestates.com>

Level 24, Lee Garden One,
33 Hysan Ave, Causeway Bay,
Hong Kong
+852 3963 8411