

0247 401 2020 | enquiries@globalhousestates.com

**BRADING ROAD, LAMBETH, LONDON**

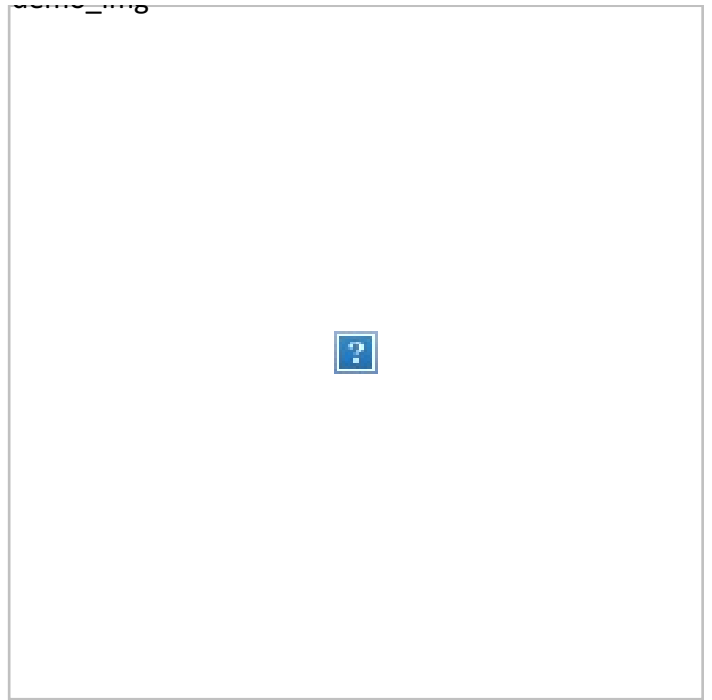
£923.08



**FOR LET**



- Four double bedrooms
- Two bathrooms
- Wood floors
- Private patio garden



## Propety Description

Considerable four double bedroom Victorian house located on a popular residential road off Brixton Hill, giving easy access to many amenities including, Brixton underground station, Brockwell Park and Brixton Village, which is full of fantastic restaurants and bars. This period property is full of original features including stripped wood floors throughout, there are four large double bedrooms, the kitchen breakfast room is fitted with bespoke wood units, a butler sink and real limestone floor tiles. This property benefits from a private patio garden, neutral decor throughout and there are two bathrooms. Perfect for four professional sharers.

## Viewing

Please contact our Global House Estates Ltd Office on 0207 401 2020 if you wish to arrange a viewing appointment for this property or require further information.

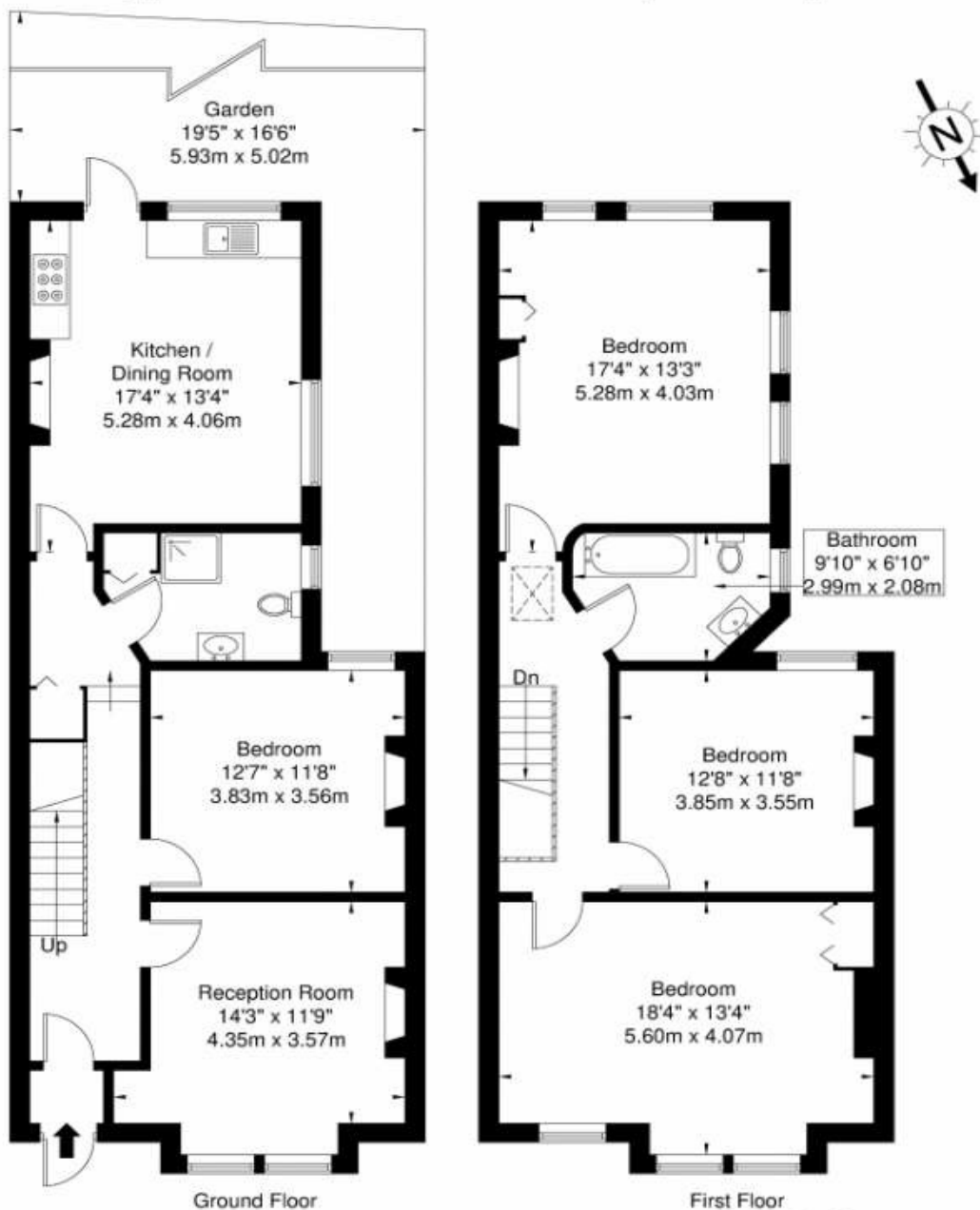
## Disclaimer

This website provides information about buying, selling, renting UK property. The information is from reliable sources, but we can't guarantee that it's always accurate. There may be mistakes or changes in the information, such as price, availability, leases, or financing. The square footage is also an estimate and should be confirmed by a professional architect or engineer.

# Floor plan

## Brading Road SW2 2AW

Approx. Gross Internal Area = 141.3 sq m / 1521 sq ft



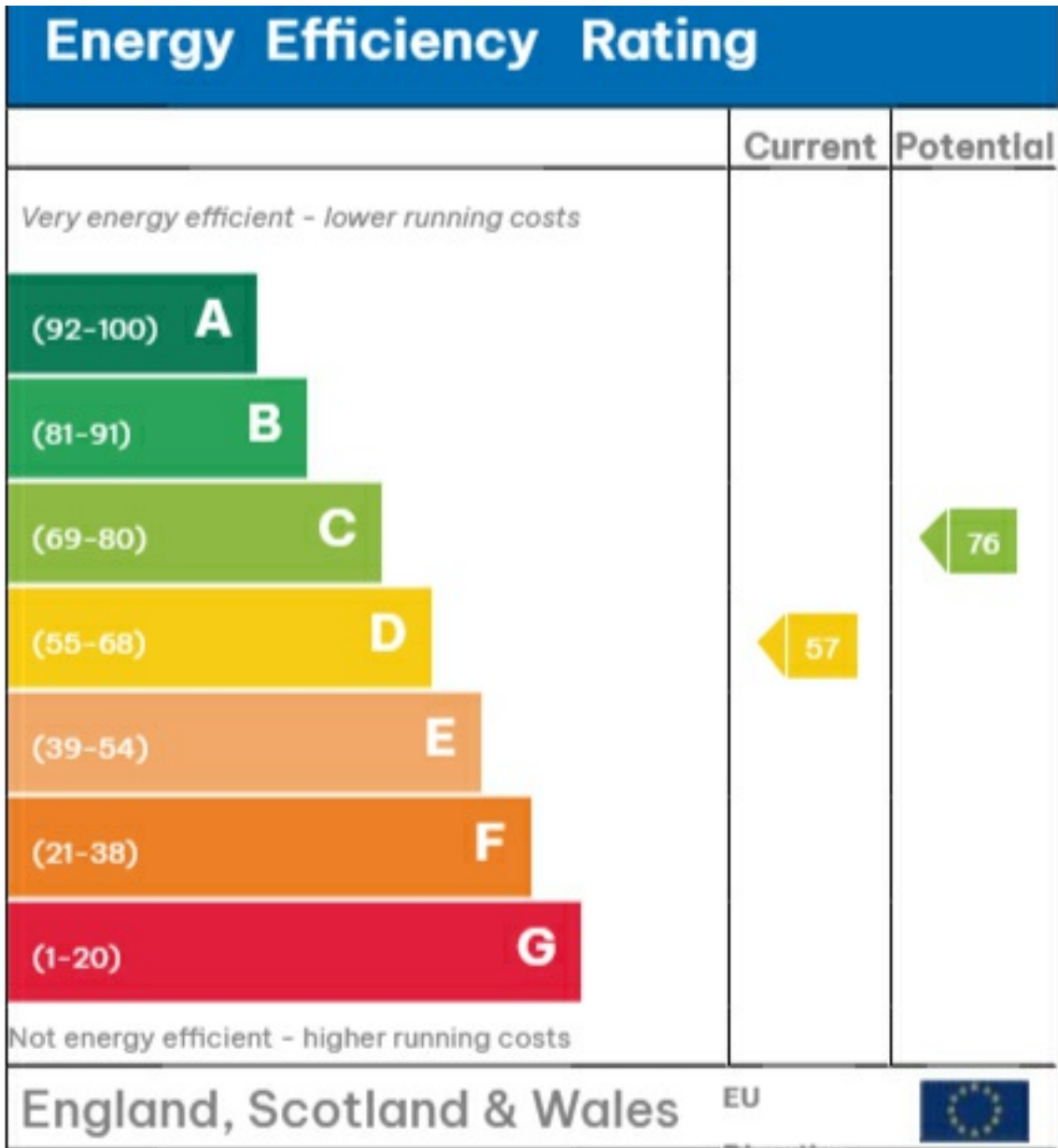
Ref

Copyright **BLEU PLAN**

The Floor plan is not to scale and measurements and areas shown are approximate and therefore should be used for illustrative purposes only. The plan has been prepared in accordance with the RICS code of Measuring Practice and whilst we have confidence in the information produced it must not be relied on. If there is any aspect of particular importance, you should carry out or commission your own inspection of the property.

Copyright @ BLEUPLAN

# EPC



Directive

2002/91/EC



35a St Georges Road, London,  
SE1 6EW  
+44 (0) 207 401 2020

<https://globalhousestates.com>

Level 24, Lee Garden One,  
33 Hysan Ave, Causeway Bay,  
Hong Kong  
+852 3963 8411