

0247 401 2020 | [enquiries@globalhouseestates.com](mailto:enquiries@globalhouseestates.com)

68 MOLESWORTH STREET, LEWISHAM, LONDON

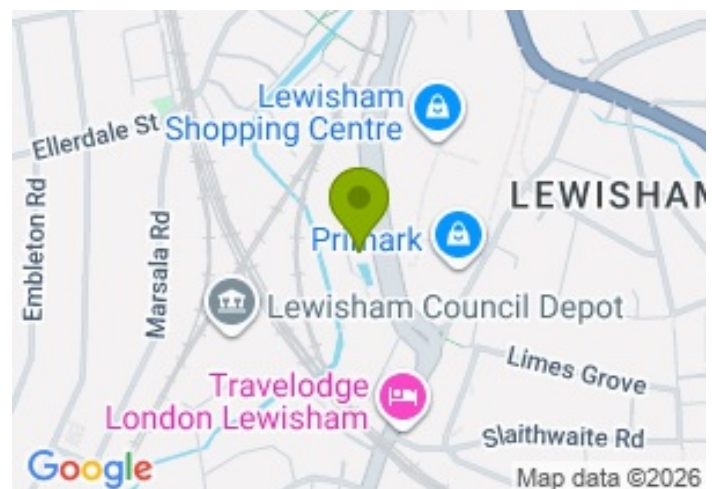
£525,000.00



FOR SALE



- Beautiful watermill conversion
- Modern 837 sq. ft. three-bedroom apartment
- Private terrace
- Great transport link connections and local amenities
- Natural light throughout
- Separate WC
- Open plan living area
- Parking options available



## Property Description

We are pleased to introduce this stylish and unique three-bedroom apartment set within the Mill Apartments development. Previously a watermill, now restored to offer residents a modern living space while keeping its original charm.

Leading off the long hallway are three generously sized double bedrooms, each benefiting from excellent proportions and the charm of double-glazed sash windows that invite in plenty of natural light.

The home opens into a beautifully designed living area. This large open-plan space features engineered oak flooring, perfectly blending modern convenience with the character of this historic conversion. The contemporary kitchen is fitted with integrated appliances.

Completing the layout is a sleek three-piece bathroom along with a separate WC.

A private balcony provides an inviting outdoor retreat. Residents also benefit from access to a dedicated children's playground and communal gardens. Parking options are also available.

Situated in the heart of Lewisham, the apartment is opposite Lewisham Shopping Centre, placing cafés, restaurants, retail stores, and supermarkets right on your doorstep.

Located just a 6-minute walk from Lewisham Train and DLR Station, the property enjoys outstanding connectivity, making it an exceptional choice for families and investors alike.

Contact us today to arrange a viewing.

Length of lease: approximately 990 years remaining

Ground rent: £250 per annum

Service charge: approximately £1953 per annum

All data and information set forth on this website regarding real property, for sale, purchase, rental and/or financing, are from sources regarded as reliable. No warranties are made as to the accuracy of any descriptions and/or other details and such information is subject to errors, omissions, changes of price, tenancies, commissions, prior sales, leases or financing, or withdrawal without notice. Square footages are approximate and may be verified by consulting a professional architect or engineer.

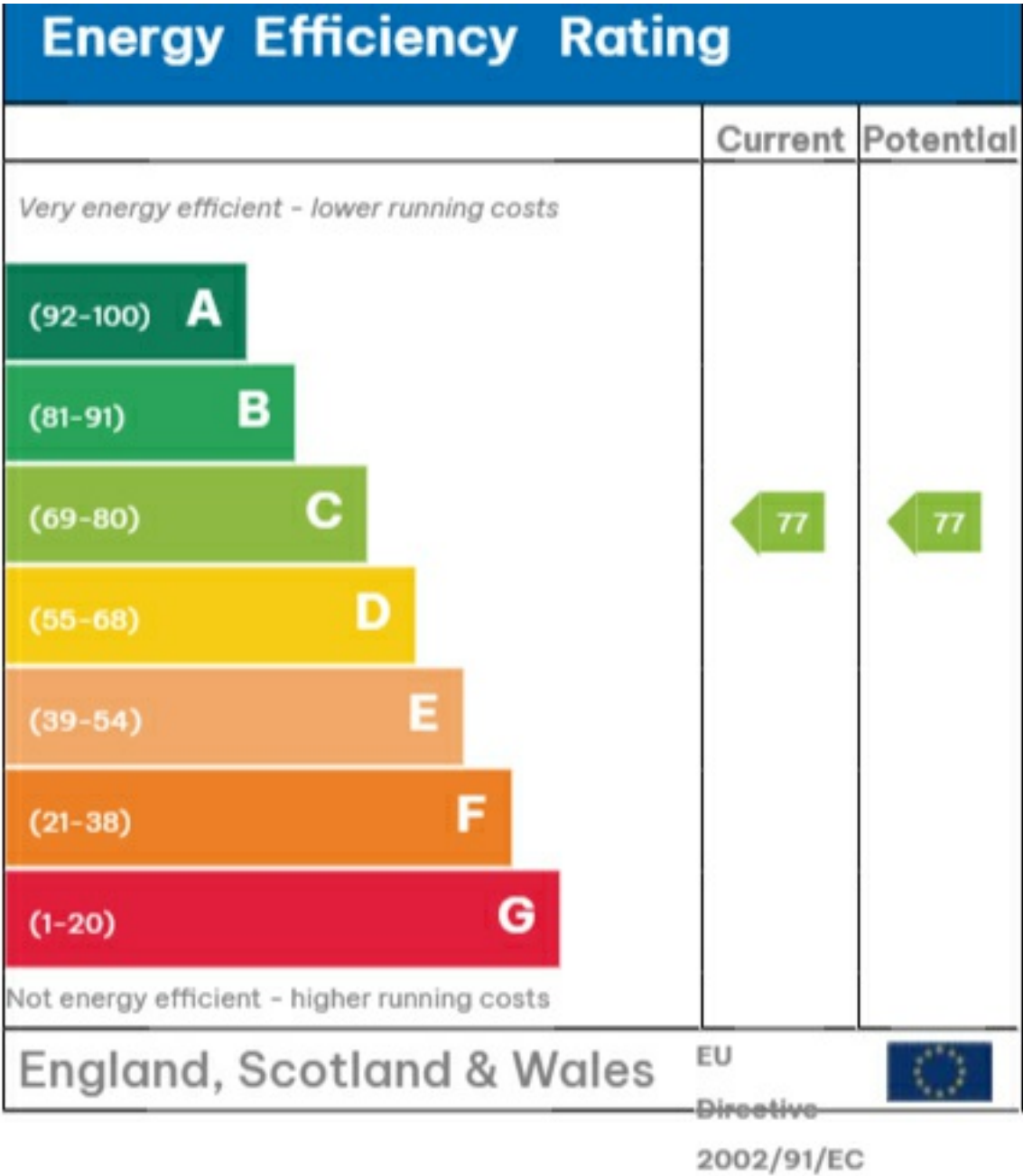
## Viewing

Please contact our Global House Estates Ltd Office on 0207 401 2020 if you wish to arrange a viewing appointment for this property or require further information.

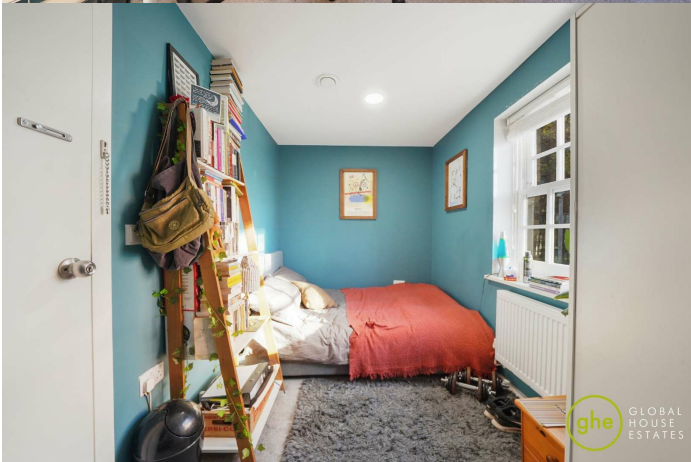
## Disclaimer

This website provides information about buying, selling, renting UK property. The information is from reliable sources, but we can't guarantee that it's always accurate. There may be mistakes or changes in the information, such as price, availability, leases, or financing. The square footage is also an estimate and should be confirmed by a professional architect or engineer.

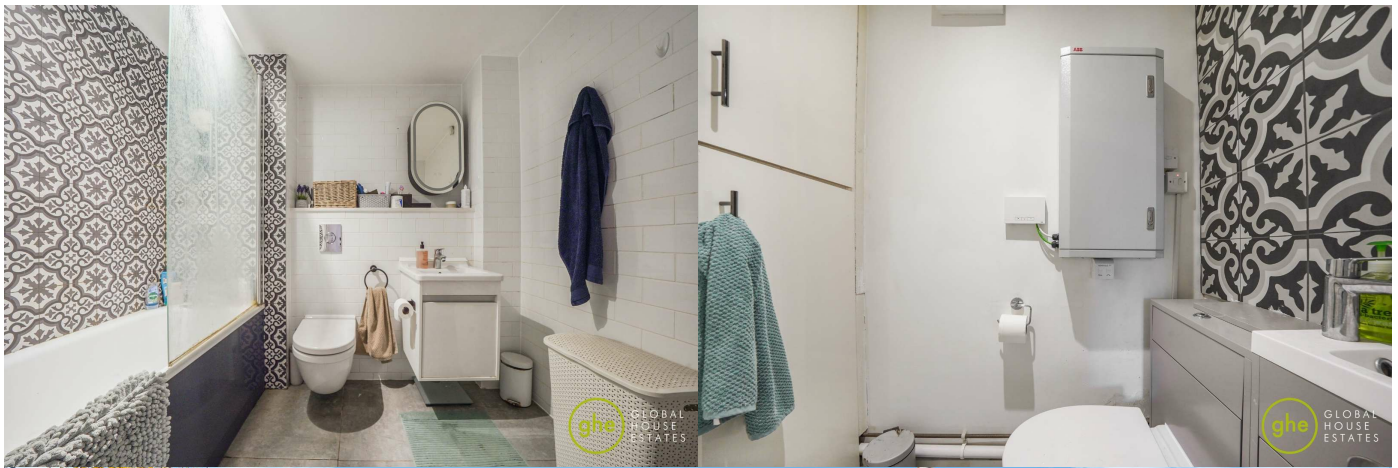
EPC











35a St Georges Road, London,  
SE1 6EW  
+44 (0) 207 401 2020

<https://globalhouseestates.com>

Level 24, Lee Garden One,  
33 Hysan Ave, Causeway Bay,  
Hong Kong  
+852 3963 8411