

0247 401 2020 | enquiries@globalhouseestates.com

590 COMMERCIAL ROAD, LIMEHOUSE, LONDON

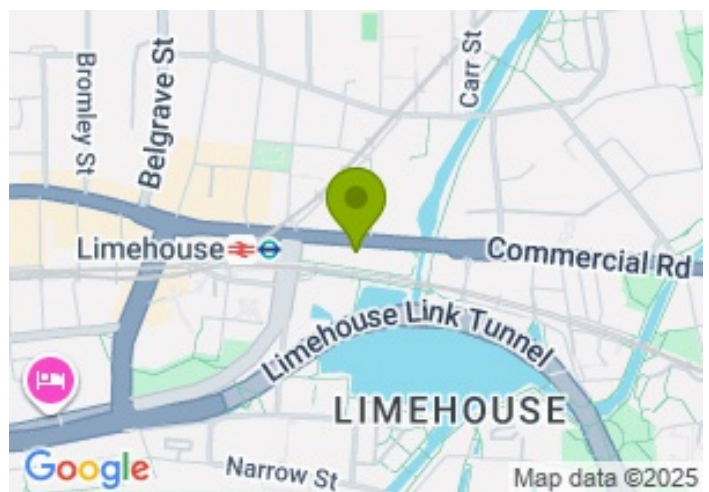
£600.00



FOR LET



- Two Double Bedrooms
- Two Bathrooms
- Two Private Balconies
- Secure Underground Parking
- Near Limehouse DLR Station



Property Description

Welcome to this stylish 2-bedroom, 2-bathroom apartment, a bright and modern home with two private balconies and secure underground parking. Just moments from Limehouse DLR Station, commuting is effortless, with excellent connections across London for professionals and families alike.

Thoughtfully furnished throughout, the open-plan living area offers a comfortable space for both relaxing and entertaining, filled with natural light to create a warm and welcoming atmosphere. The en-suit bedroom and guest bedroom are both well-proportioned, complemented by contemporary bathrooms for added convenience.

Step outside and you'll find a vibrant selection of cafés, shops, bars and restaurants close by, bringing the best of city living right to your doorstep. With modern furnishing, superb transport links and secure parking, this property provides comfort, style and convenience all in one.

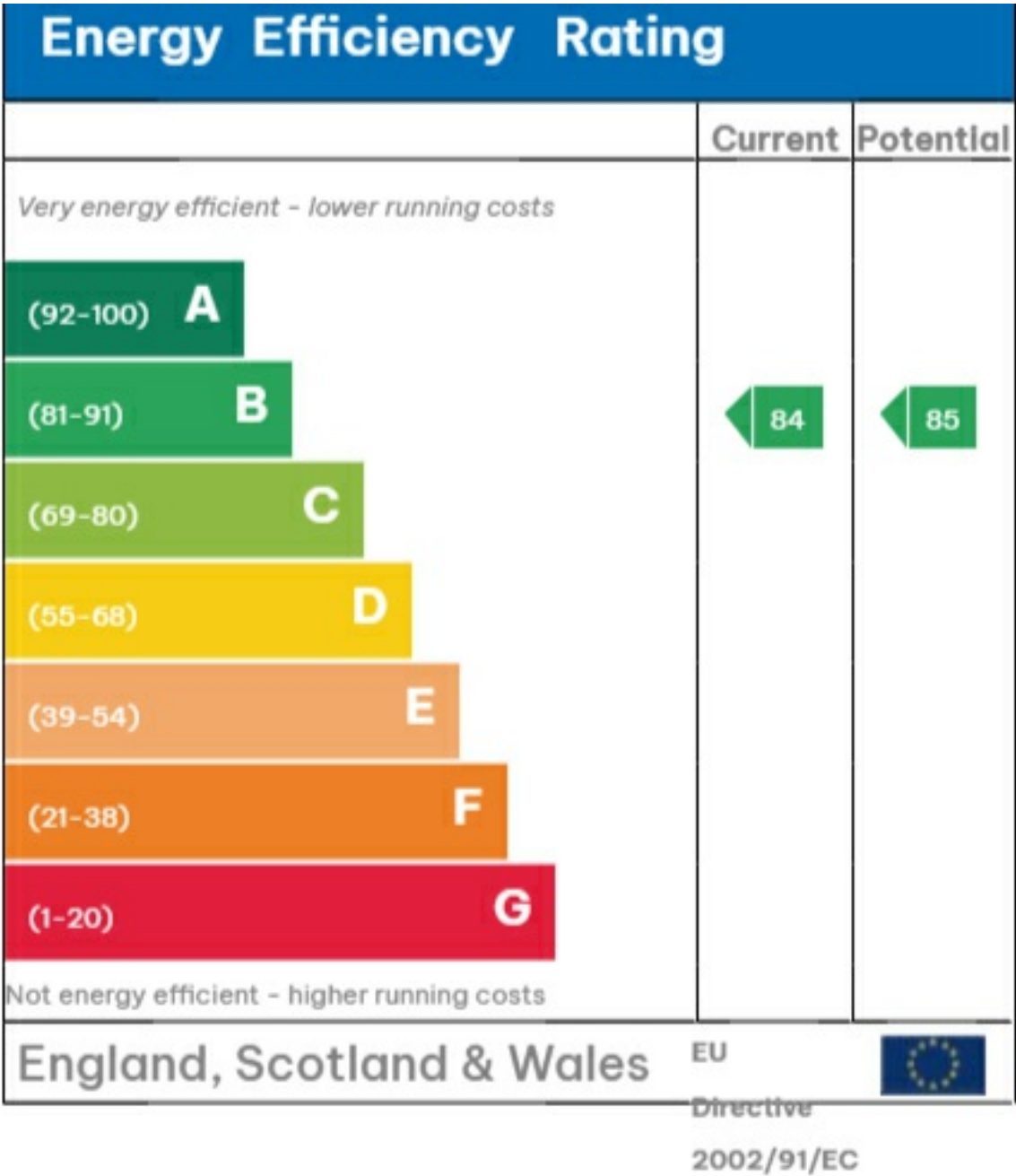
Viewing

Please contact our Global House Estates Ltd Office on 0207 401 2020 if you wish to arrange a viewing appointment for this property or require further information.

Disclaimer

This website provides information about buying, selling, renting UK property. The information is from reliable sources, but we can't guarantee that it's always accurate. There may be mistakes or changes in the information, such as price, availability, leases, or financing. The square footage is also an estimate and should be confirmed by a professional architect or engineer.

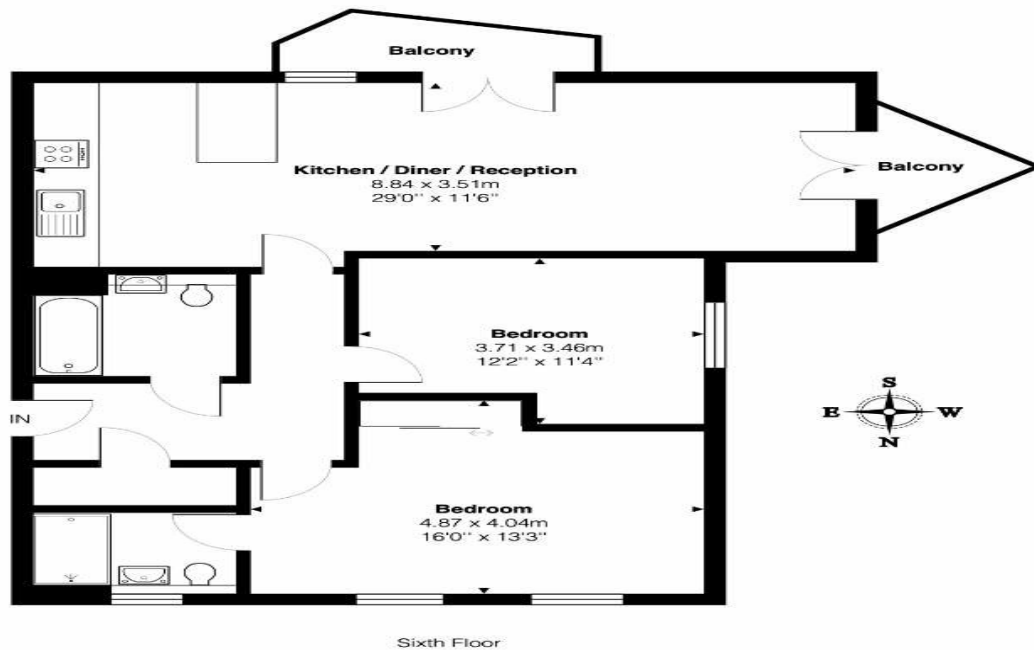
EPC





590 Commercial Road, E14

Total Area: 82.6 m² ... 889 ft² (excluding balcony)



This Floorplan is provided without warranty, of any kind.
Bespoke Plans disclaims any warranty including,
without limitation, satisfaction, quality or accuracy of any dimensions