

0247 401 2020 | enquiries@globalhouseestates.com

GLASSWATER LOCKS, 1 PITT STREET, BIRMINGHAM

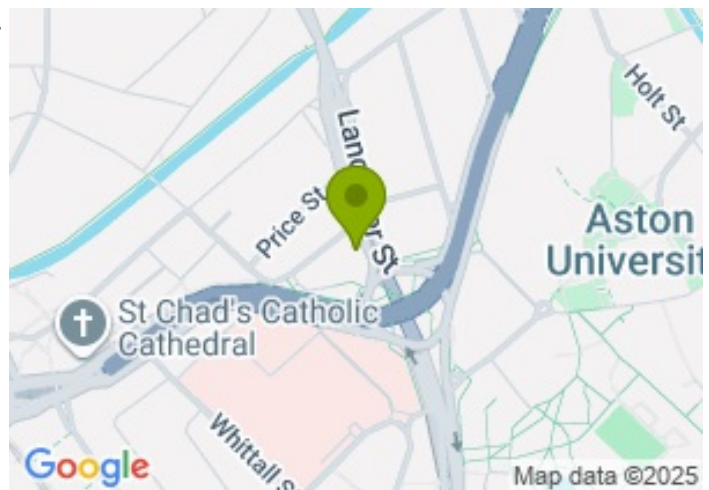
£1,700.00



FOR LET



- *Brand New* 2 bedroom duplex on 8th floor
- Fully furnished with modern design and high quality furniture
- A study room on the beautiful mezzanine floor
- 24 hours concierge
- Resident lounge, gym, cinema room and games room
- Available now



Property Description

Glasswater Locks opens up a new gateway between Birmingham's Eastside and the city's vibrant Learning Quarter. The contemporary canal-side duplex is located moments away from the city centre and high-speed rail links. The vision is to create a thriving new community with extensive on-site facilities that offer an appealing alternative to the buzz of the city.

This brand new luxury two-bedroom, two-bathroom apartment located on the top floor (8/F) offers spacious living space including a beautiful mezzanine. The layout has been thoughtfully planned to maximise space and natural light, creating a bright and welcoming atmosphere to the resident.

The apartment comes fully furnished with modern design and high quality furniture, so you can move straight in and start enjoying your new home. It boasts floor to ceiling windows ensuring plenty of natural light into substantial open plan living and dining areas.

The kitchen equipped with modern integrated electric appliances. The cozy study room on mezzanine floor provides a calm and private space for work or reflection. Two spacious double bedrooms, ideal for a small family, young professionals or students and one of which includes an en-suite bathroom.

Residents at Glasswater Locks enjoy access to a range of top-class amenities including a 24 hours concierge, resident lounge, multi-station modern gym, cinema room, games room and Canalside Club, creating the perfect blend of comfort and convenience.

Living at Glasswater Locks is about more than just a beautiful apartment. You will be part of a vibrant Eastside community surrounded by cafés, bars and cultural hotspots, with the city centre only a short stroll or tram ride away.

Please contact GHE to book a viewing!

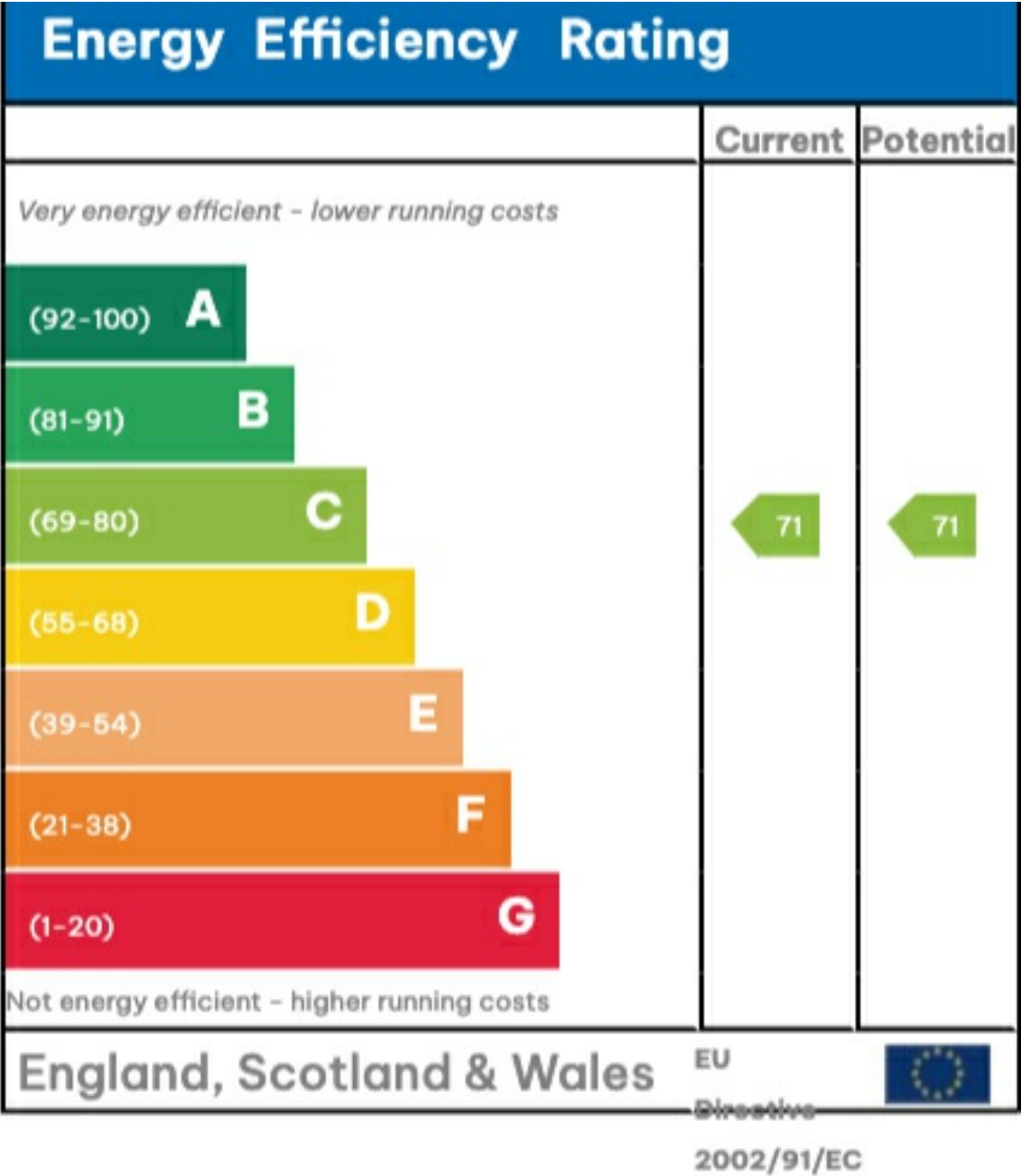
All data and information set forth on this website regarding real property, for sale, purchase, rental and/or financing, are from sources regarded as reliable. No warranties are made as to the accuracy of any descriptions and/or other details and such information is subject to errors, omissions, changes of price, tenancies, commissions, prior sales, leases or financing, or withdrawal without notice. Square footages are approximate and may be verified by consulting a professional architect or engineer.

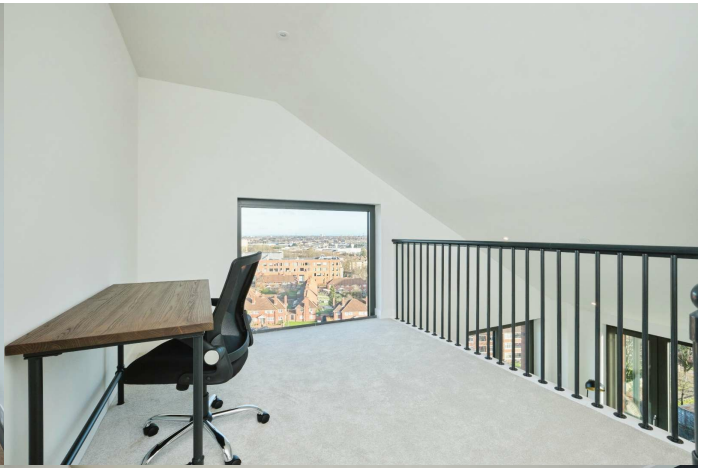
Viewing

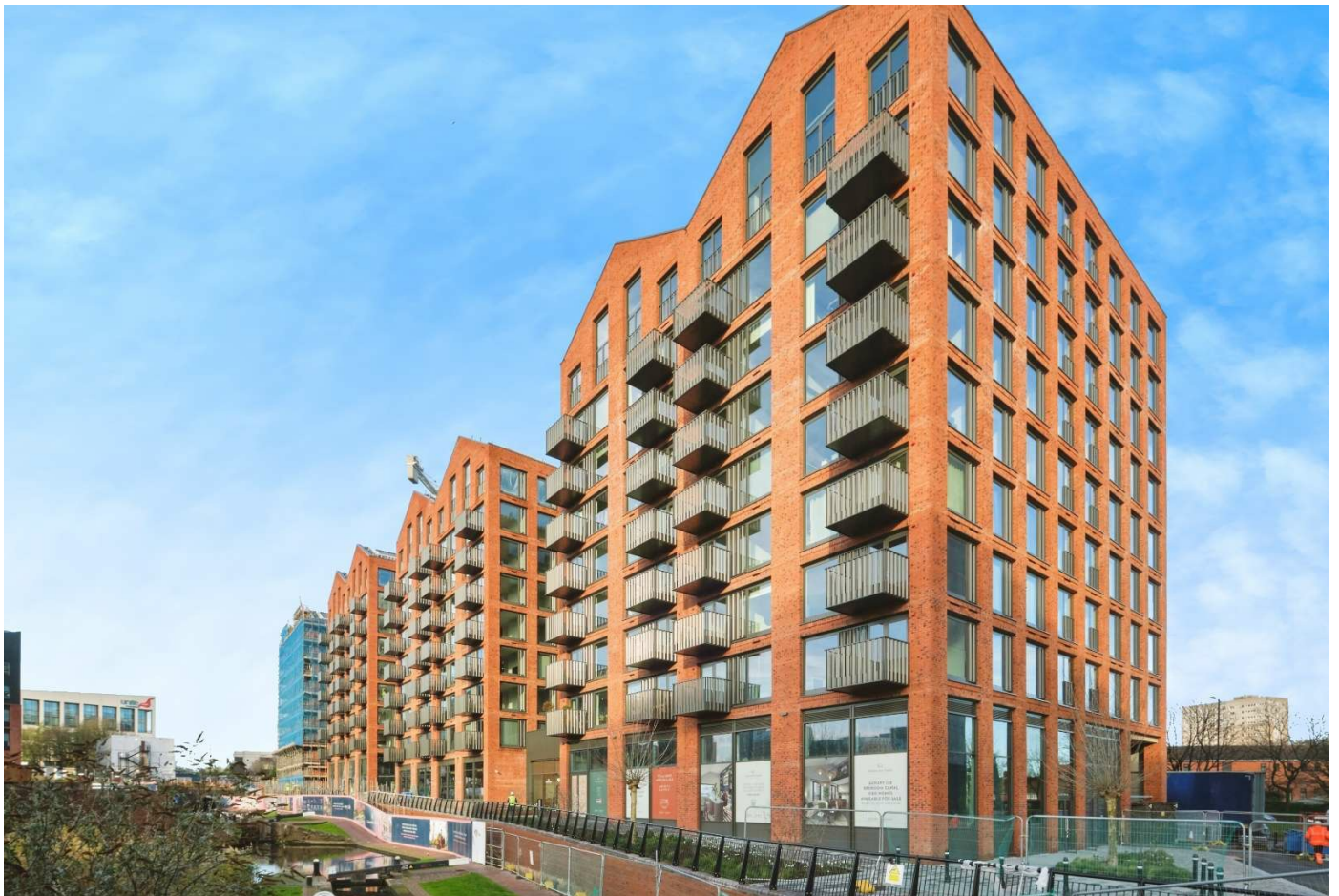
Please contact our Global House Estates Ltd Office on 0207 401 2020 if you wish to arrange a viewing appointment for this property or require further information.

Disclaimer

This website provides information about buying, selling, renting UK property. The information is from reliable sources, but we can't guarantee that it's always accurate. There may be mistakes or changes in the information, such as price, availability, leases, or financing. The square footage is also an estimate and should be confirmed by a professional architect or engineer.







35a St Georges Road, London,
SE1 6EW
+44 (0) 207 401 2020

<https://globalhouseestates.com>

Level 24, Lee Garden One,
33 Hysan Ave, Causeway Bay,
Hong Kong
+852 3963 8411