

0247 401 2020 | [enquiries@globalhouseestates.com](mailto:enquiries@globalhouseestates.com)

14, PIAZZA WALK, TOWER HAMLETS, LONDON

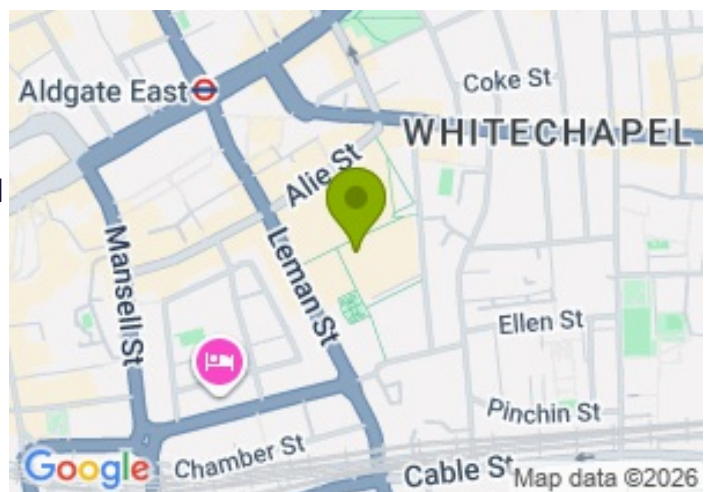
£660,000.00



FOR SALE



- One-bedroom apartment
- Private balcony
- 24-hour concierge service, residents' gym, wellness centre, cinema, business centre and communal garden
- Long lease
- Ample storage space
- Award-winning development



## Property Description

GHE is proud to present this beautifully designed one-bedroom apartment in Neroli House, part of the award-winning Goodman's Fields development.

Located on the second floor, the apartment features a bright open-plan kitchen and living area, flooded with natural light through the large floor-to-ceiling windows. Finished to a high standard, the kitchen is fully fitted with integrated Siemens appliances. A private balcony extends the living space and provides a peaceful area to relax.

The generous double bedroom benefits from a built-in wardrobe, offering ample storage, while an additional storage cupboard in the hallway ensures everyday essentials are neatly tucked away. The apartment is completed by a stylish, three-piece bathroom with high quality fittings. The underfloor heating and double glazed windows ensure year-round comfort and energy efficiency.

Residents enjoy exceptional amenities, including a 24-hour concierge service, a private wellness centre with gym, swimming pool, sauna and steam room, a cinema room, business centre and beautifully landscaped communal gardens. The development also benefits from on-site shops, restaurants and cafés.

Perfectly positioned, the property provides easy access to the city, with Aldgate East station just a short stroll away, making it an ideal home for professionals seeking luxury, comfort, and connectivity.

Length of lease: Approximately 986 years remaining

Service charge: circa £4350 per annum

Ground rent: £550 per annum

All data and information set forth on this website regarding real property, for sale, purchase, rental and/or financing, are from sources regarded as reliable. No warranties are made as to the accuracy of any descriptions and/or other details and such information is subject to errors, omissions, changes of price, tenancies, commissions, prior sales, leases or financing, or withdrawal without notice. Square footages are approximate and may be verified by consulting a professional architect or engineer.

## Viewing

Please contact our Global House Estates Ltd Office on 0207 401 2020 if you wish to arrange a viewing appointment for this property or require further information.

## Disclaimer

This website provides information about buying, selling, renting UK property. The information is from reliable sources, but we can't guarantee that it's always accurate. There may be mistakes or changes in the information, such as price, availability, leases, or financing. The square footage is also an estimate and should be confirmed by a professional architect or engineer.

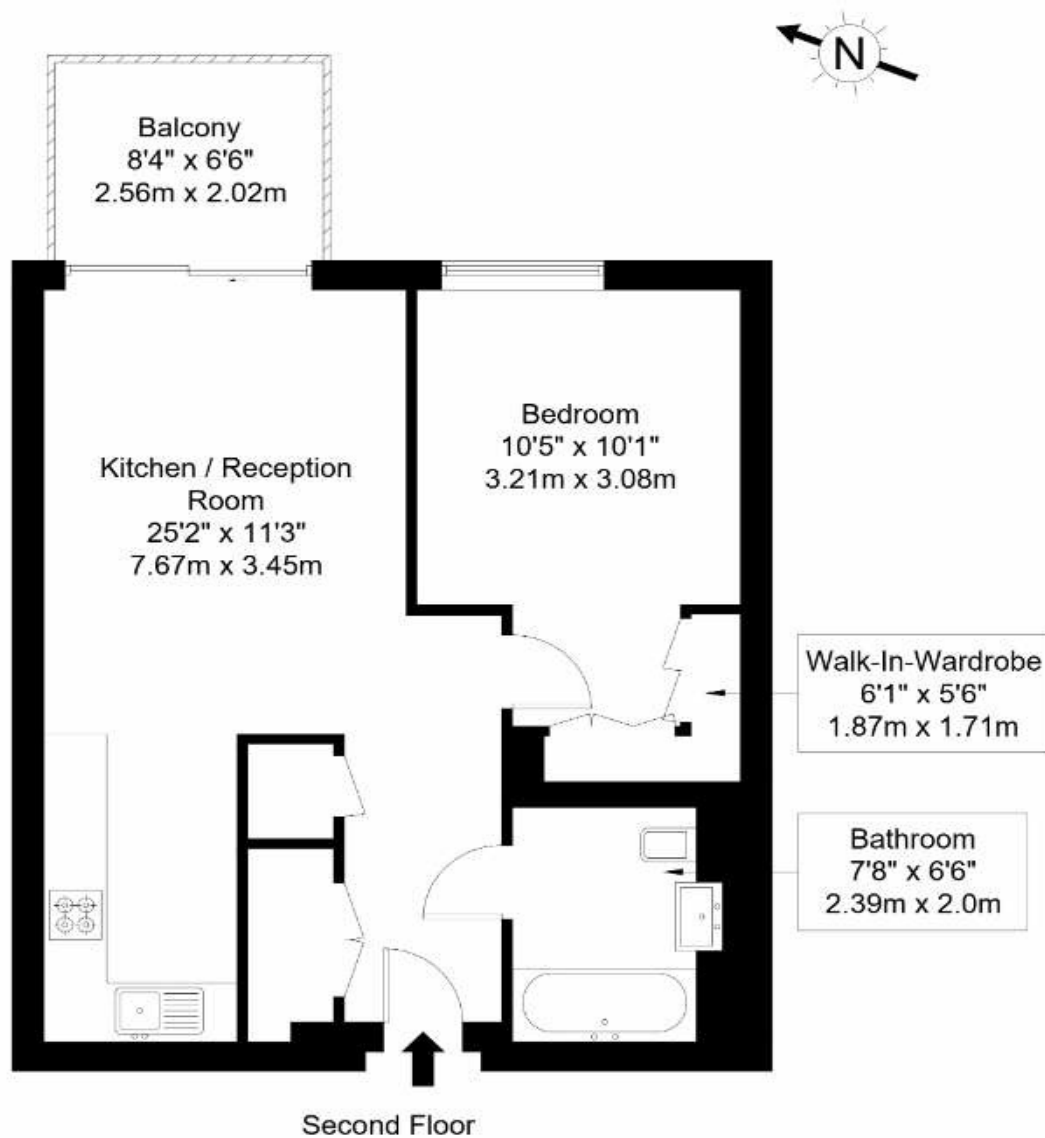
# Floor plan

## Piazza Walk, E1 8ZH

Approx Gross Internal Area = 50.06 sq m / 539 sq ft

Balcony = 5.17 sq m / 56 sq ft

Total = 55.23 sq m / 595 sq ft



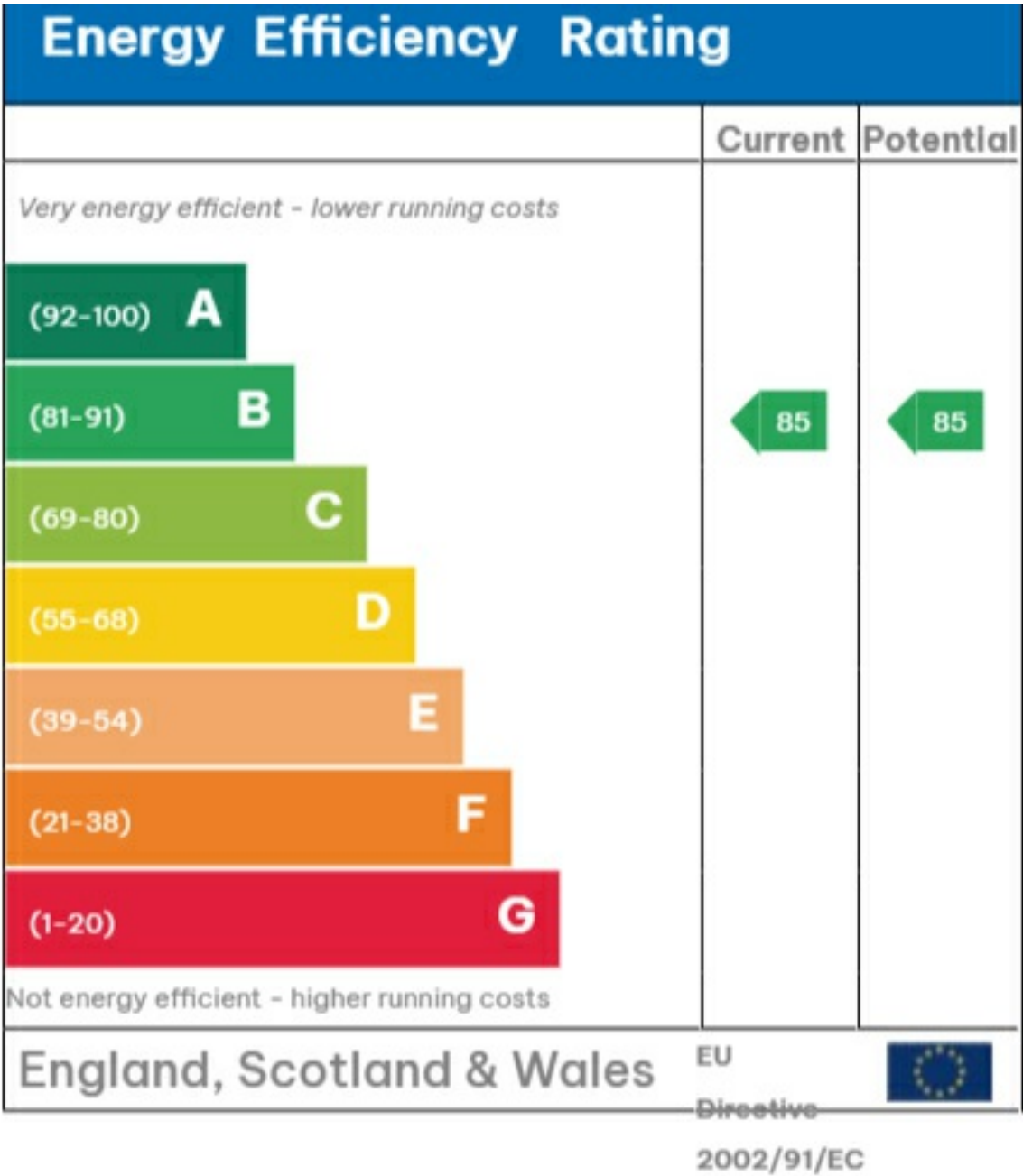
Ref :

Copyright **BLEUPLAN**

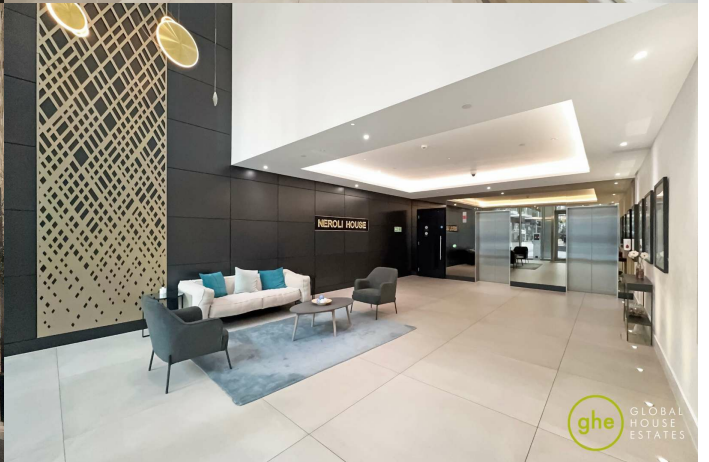
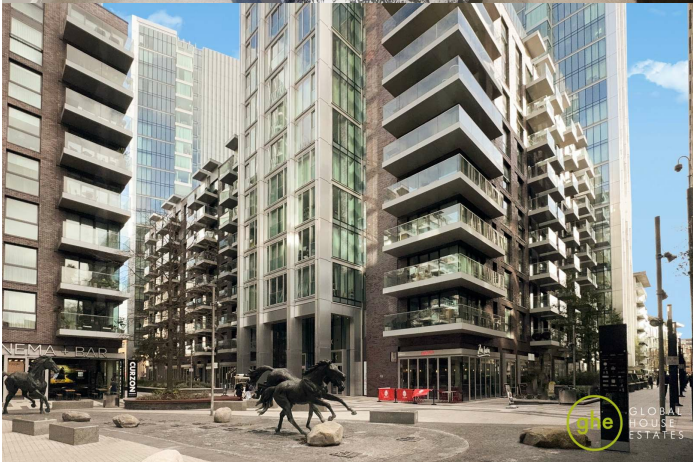
The Floor plan is not to scale and measurements and areas shown are approximate and therefore should be used for illustrative purposes only. The plan has been prepared in accordance with the RICS code of Measuring Practice and whilst we have confidence in the information produced it must not be relied on. Maximum lengths and widths are represented on the floor plan. If there is any aspect of particular importance, you should carry out or commission your own inspection of the property.

Copyright @ BLEUPLAN

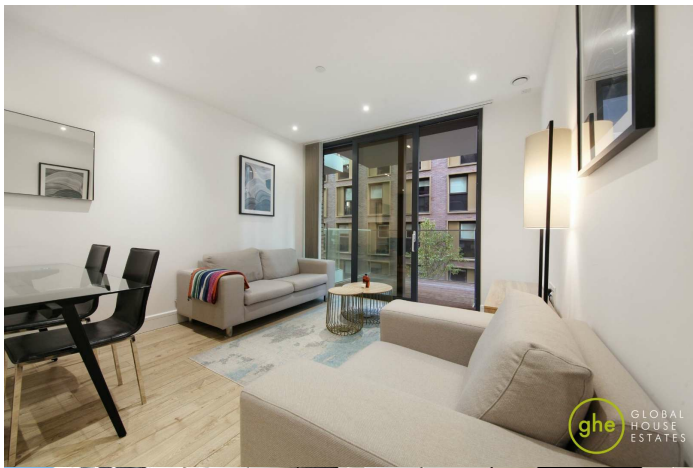
EPC











35a St Georges Road, London,  
SE1 6EW  
+44 (0) 207 401 2020

<https://globalhouseestates.com>

Level 24, Lee Garden One,  
33 Hysan Ave, Causeway Bay,  
Hong Kong  
+852 3963 8411