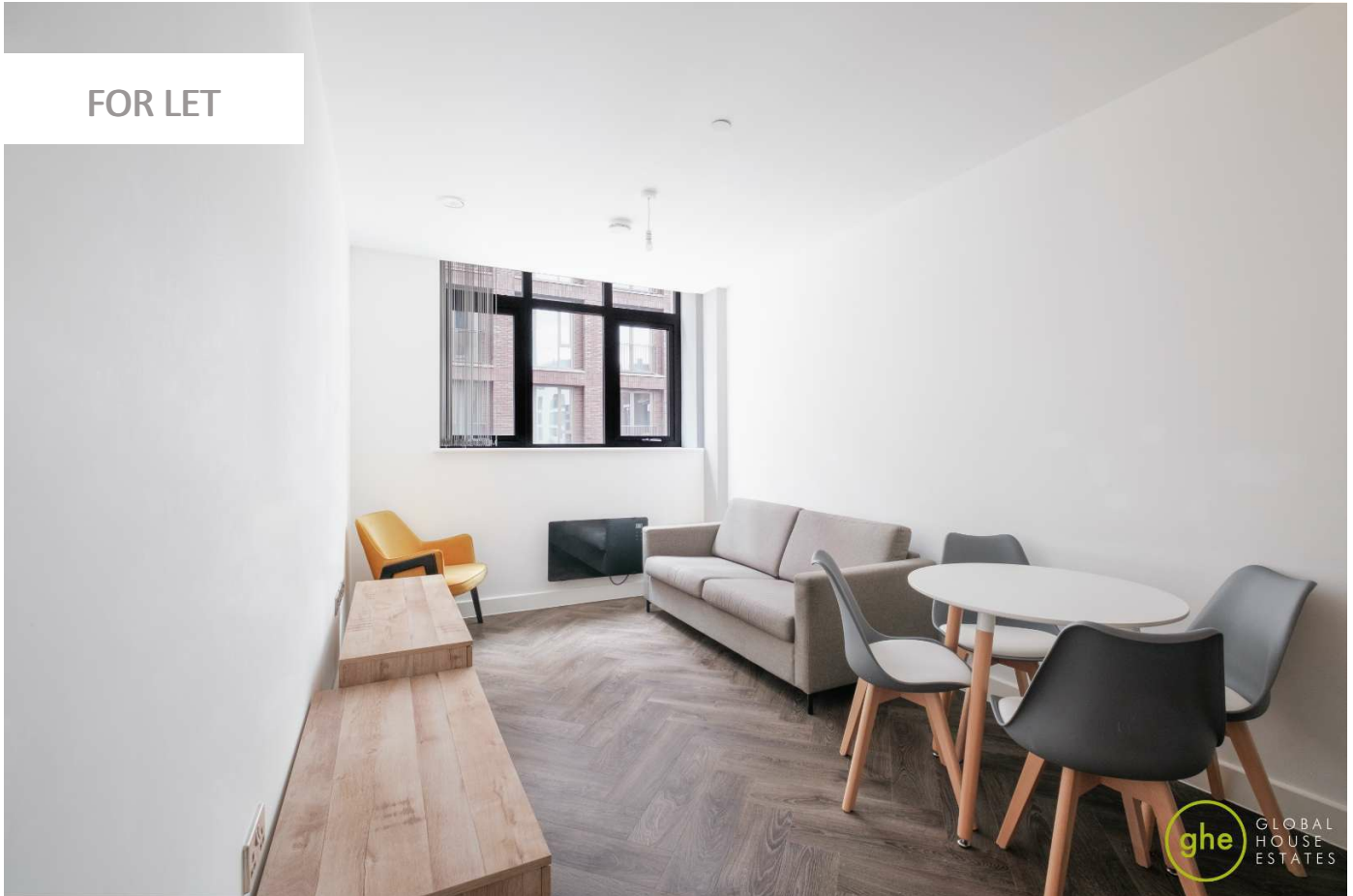


PRIORY HOUSE, BIRMINGHAM, UK

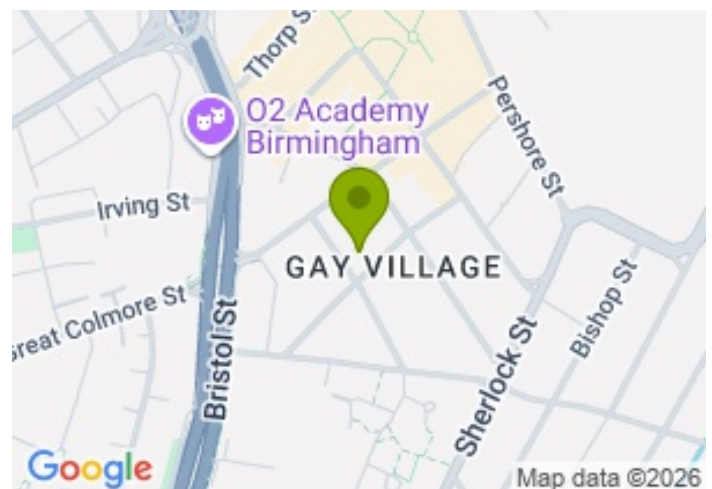
£1,050.00



FOR LET



- Fully furnished one bedroom apartment
- Integrated appliances included
- Exclusive Residents Courtyard
- Modern Development
- Minutes' walk to New Street Train Station, Bullring Shopping Centre & much more
- Available Mid-Aug 2026



## Property Description

GHE is delighted to present this fully furnished one bedroom apartment located in the Priory House development. This apartment features fully integrated appliances and comfortable residential living space.

Embracing a simple open plan living aesthetic, provide an one bed loft in Priory House. The industrial aesthetics of natural materials, brick, metalwork, and glass will be incorporated to stunning effect in the apartment interiors.

Priory House, a landmark mid-century building that housed the Birmingham Forensic Science Service for over 40 years, has been revitalised by a bold regeneration project.

Drawing inspiration from its historical roots, each home in Priory House is finished to the highest specifications, offering luxury loft-style living. Residents also have access to beautifully landscaped courtyard gardens.

Situated in Birmingham's vibrant Southside District, Priory House is surrounded by the cultural richness of Chinatown, theatreland, and the LGBT Quarter, creating a welcoming and diverse community.

Please contact GHE to arrange a viewing!

All data and information set forth on this website regarding real property, for sale, purchase, rental and/or financing, are from sources regarded as reliable. No warranties are made as to the accuracy of any descriptions and/or other details and such information is subject to errors, omissions, changes of price, tenancies, commissions, prior sales, leases or financing, or withdrawal without notice. Square footages are approximate and may be verified by consulting a professional architect or engineer.

## Viewing

Please contact our Global House Estates Ltd Office on 0207 401 2020 if you wish to arrange a viewing appointment for this property or require further information.

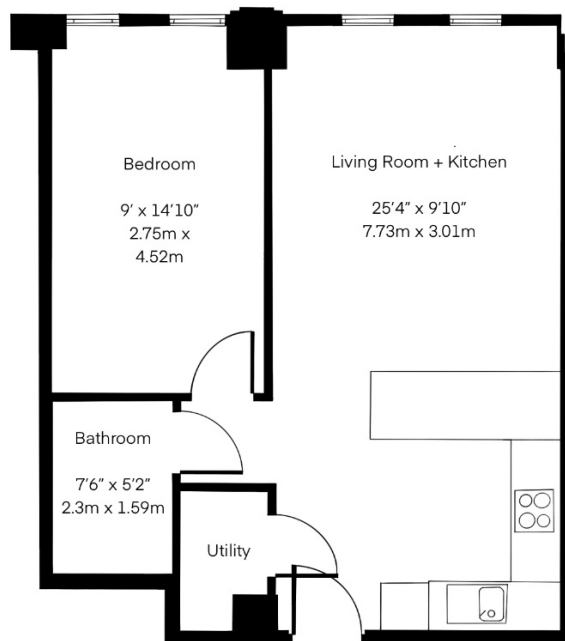
## Disclaimer

This website provides information about buying, selling, renting UK property. The information is from reliable sources, but we can't guarantee that it's always accurate. There may be mistakes or changes in the information, such as price, availability, leases, or financing. The square footage is also an estimate and should be confirmed by a professional architect or engineer.

# Floor plan

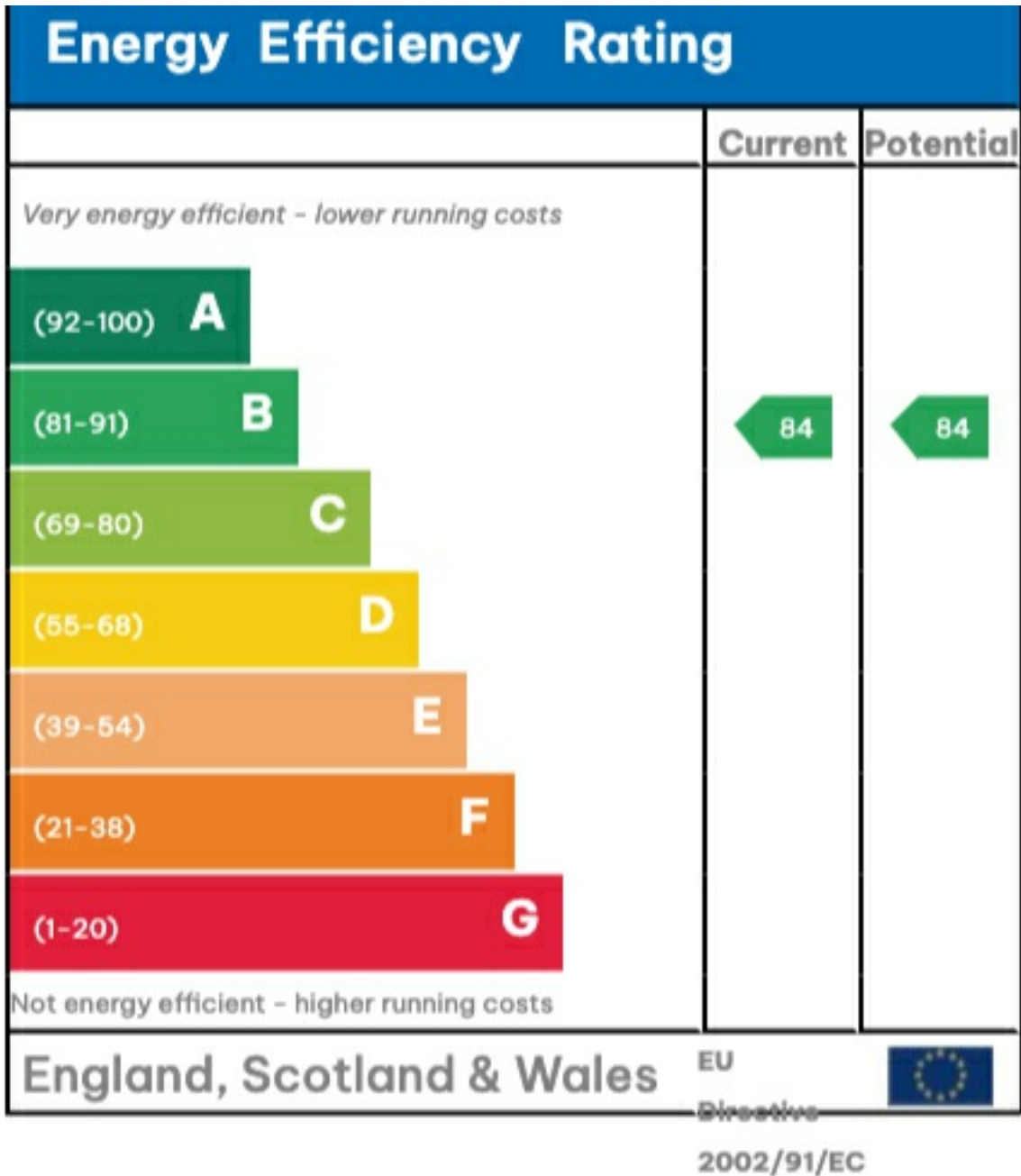
Approx. Total Area

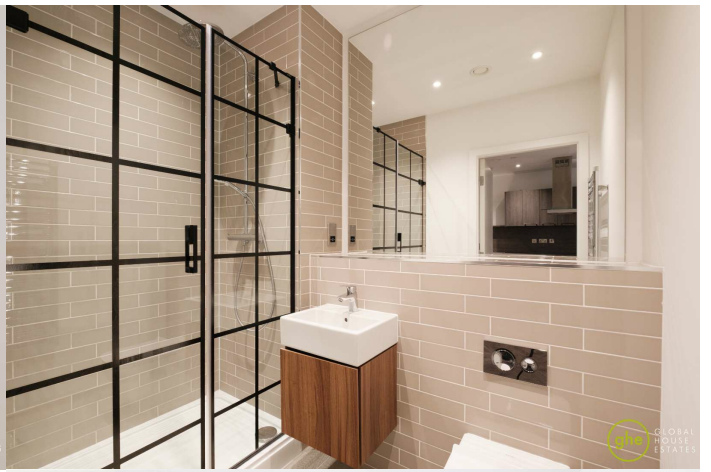
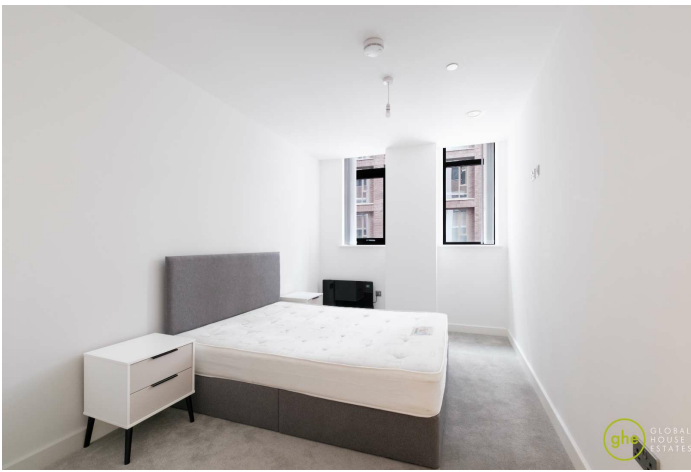
41 sqm | 441 sqft

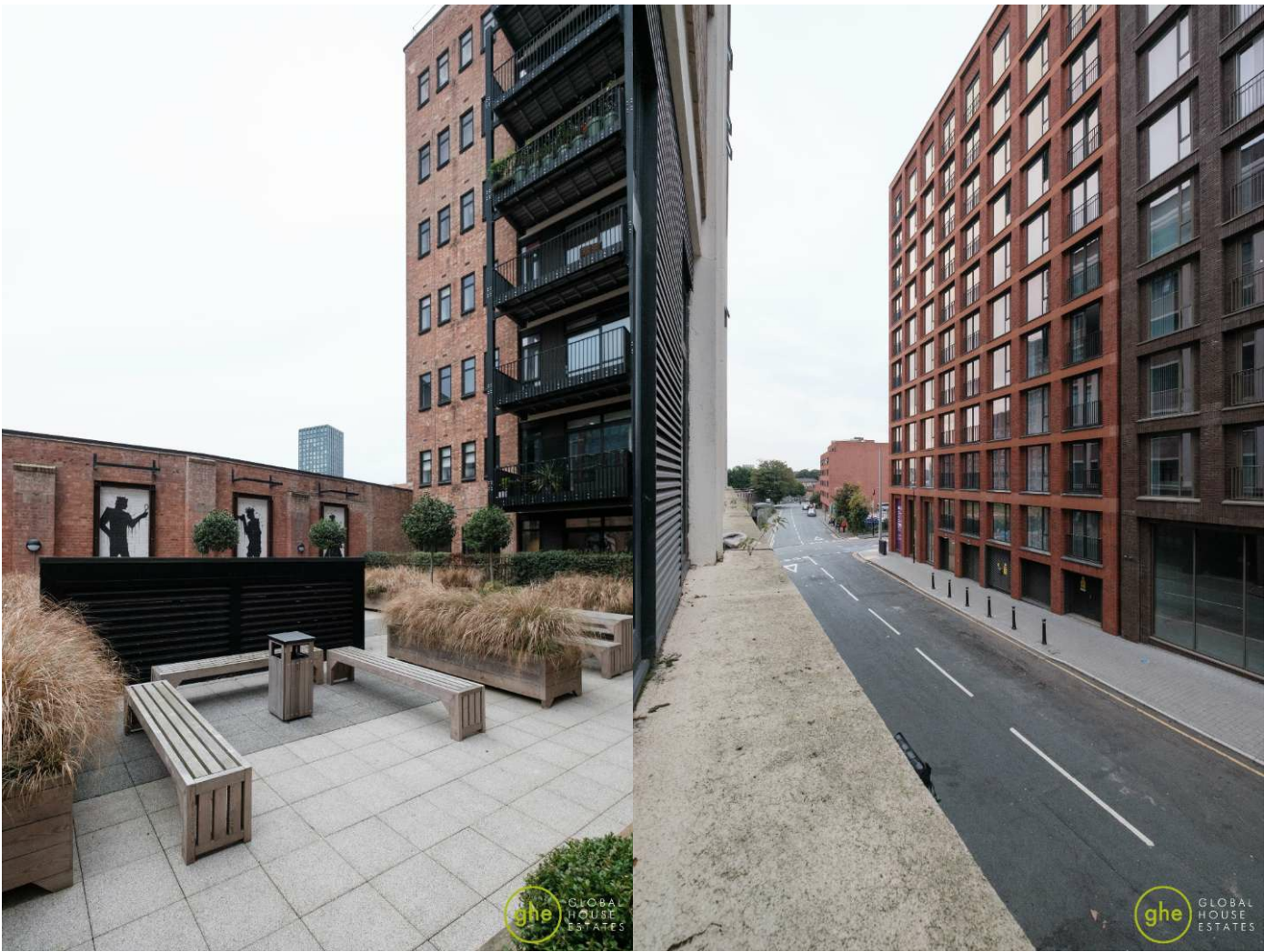


This floor plan is illustrative purposes only. It is not drawn to scale. Any measurements, floor areas (including any total floor area), openings and orientation are approximate. No details are guaranteed, they cannot be relied upon for any purpose and they do not form part of any agreement. No liability is taken for any error, omission or misstatement. A party must reply upon its own inspection(s).

# EPC









35a St Georges Road, London,  
SE1 6EW  
+44 (0) 207 401 2020

<https://globalhouseestates.com>

Level 24, Lee Garden One,  
33 Hysan Ave, Causeway Bay,  
Hong Kong  
+852 3963 8411