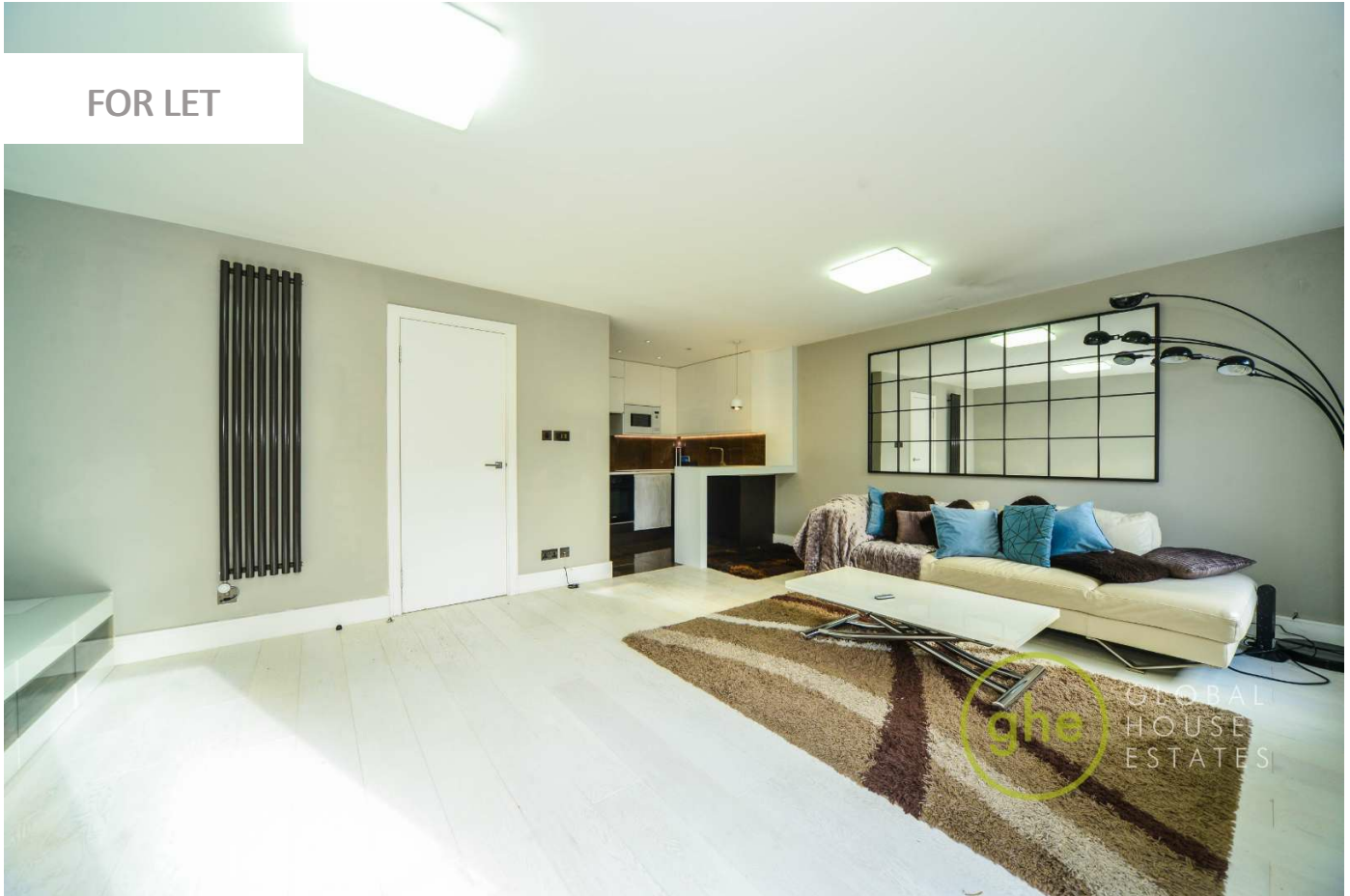


KEMPTON COURT, WHITECHAPEL, LONDON

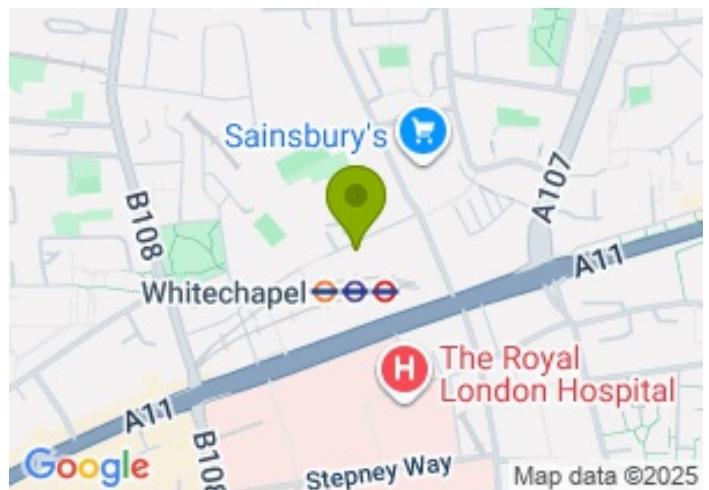
£634.61



FOR LET



- Two double bedrooms
- Wooden floors
- Secure development
- Great location for transport links
- Spacious reception room
- Modern bathroom
- Part furnished
- Day porter



Property Description

A two double bedroom apartment in this popular gated development with porter, by Whitechapel Underground Station (Elizabeth Line). It benefits from a spacious reception room with wooden flooring, fully fitted kitchen, contemporary bathroom and two spacious double bedrooms. The property is very modern and bright and is ideal for professionals due to its excellent location near to Whitechapel Station that provides access to the Elizabeth Line, Hammersmith & City and Circle tube lines as well as the Overground and so is extremely convenient for one of the best served stations in Central London.

Kempton Court is situated less than 1 mile from the city and has a great number of restaurants, shops and amenities nearby the property benefits from a bespoke wardrobe in the master bedroom

Viewing

Please contact our Global House Estates Ltd Office on 0207 401 2020 if you wish to arrange a viewing appointment for this property or require further information.

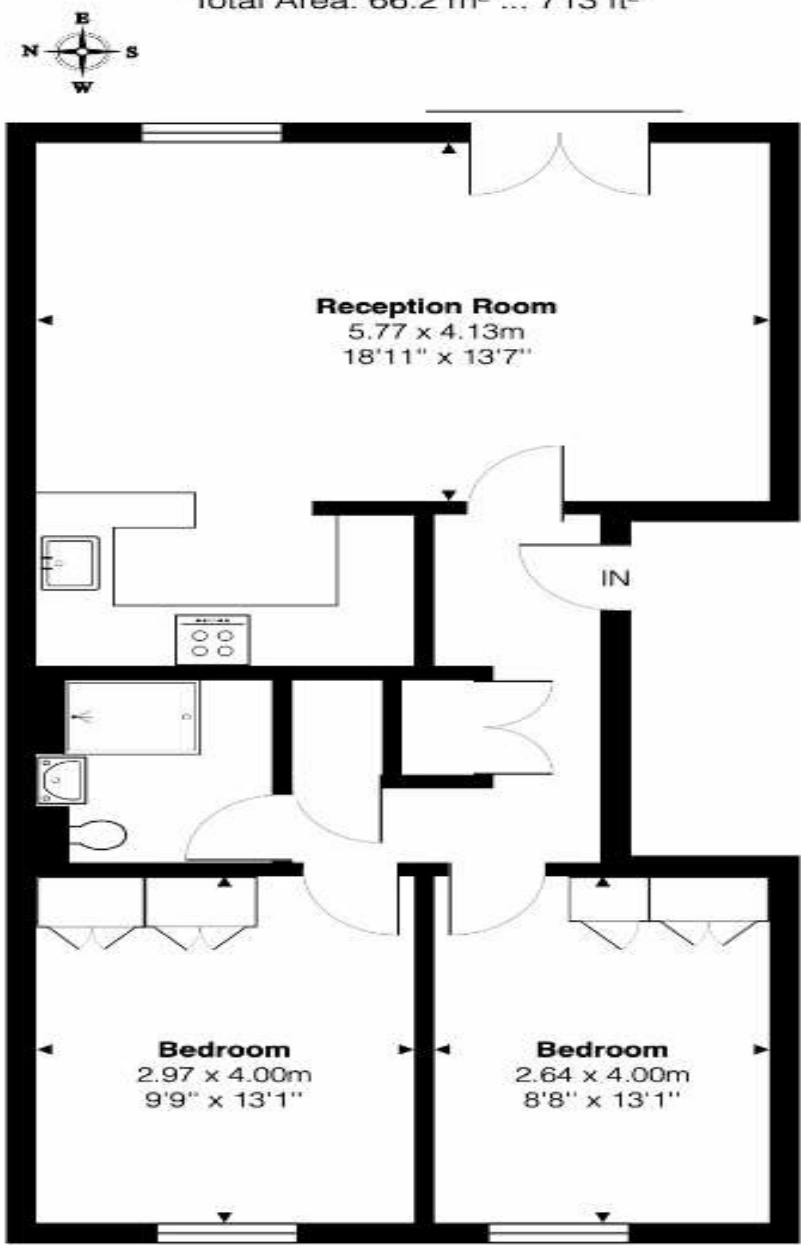
Disclaimer

This website provides information about buying, selling, renting UK property. The information is from reliable sources, but we can't guarantee that it's always accurate. There may be mistakes or changes in the information, such as price, availability, leases, or financing. The square footage is also an estimate and should be confirmed by a professional architect or engineer.

Floor plan

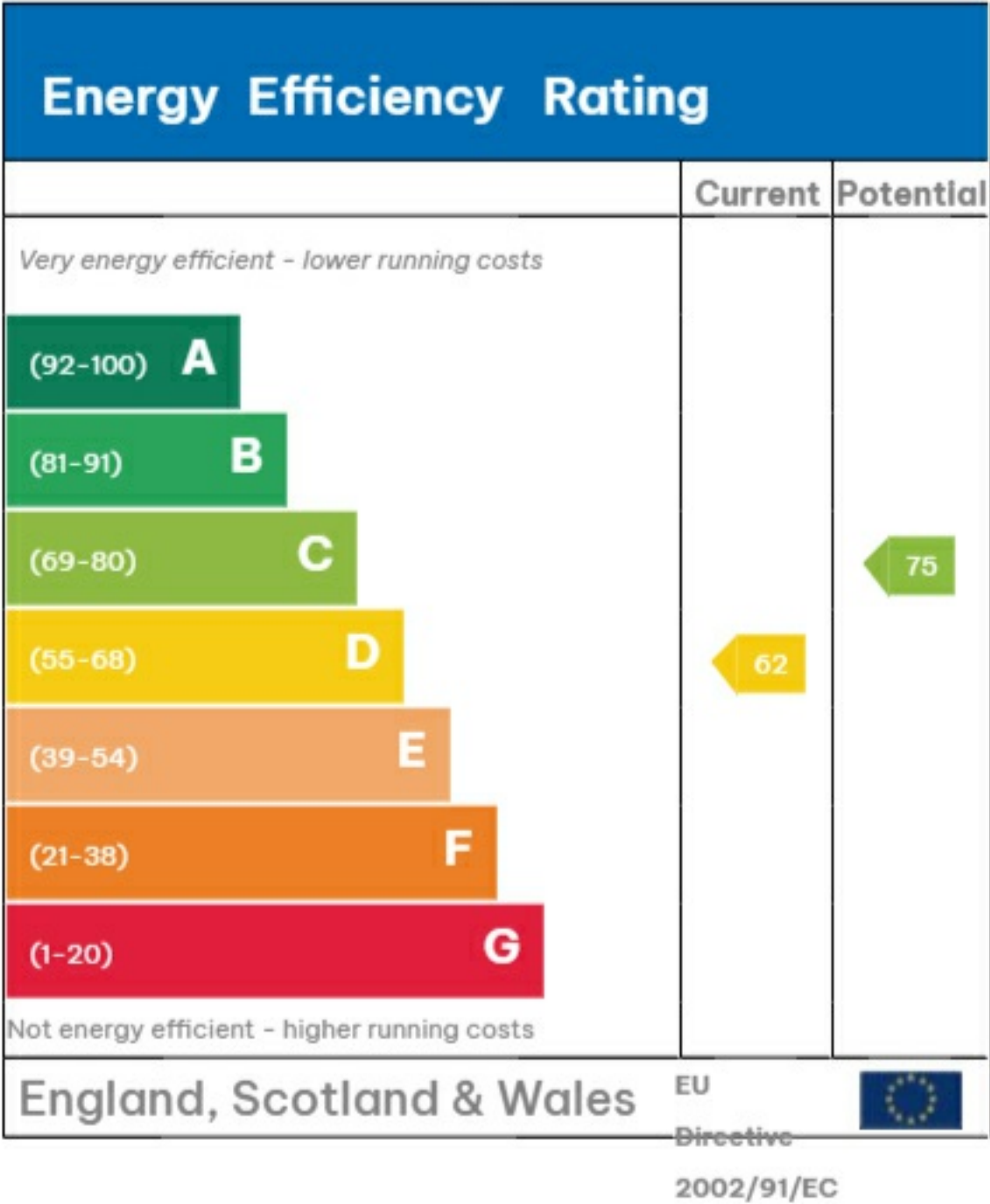
Kempton Court, 2 Durward Street, E1

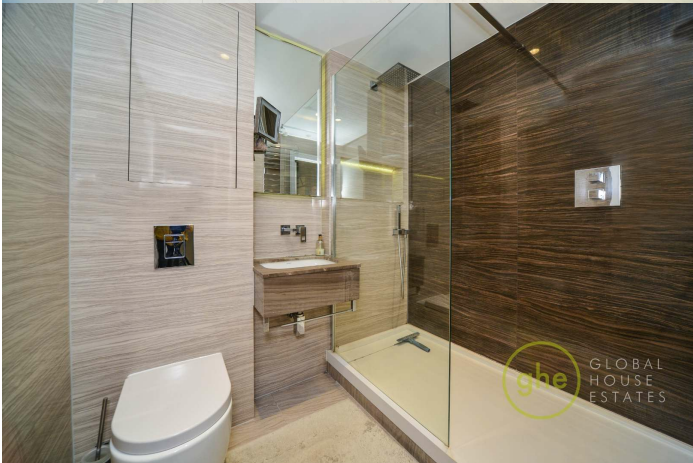
Total Area: 66.2 m² ... 713 ft²



First Floor

This Floor plan is provided without warranty, of any kind.
Bespoke Plans disclaims any warranty including,
without limitation, satisfaction, quality or accuracy of any dimensions.







35a St Georges Road, London,
SE1 6EW
+44 (0) 207 401 2020

<https://globalhouseestates.com>

Level 24, Lee Garden One,
33 Hysan Ave, Causeway Bay,
Hong Kong
+852 3963 8411