

INVERNESS TERRACE, BAYSWATER, LONDON

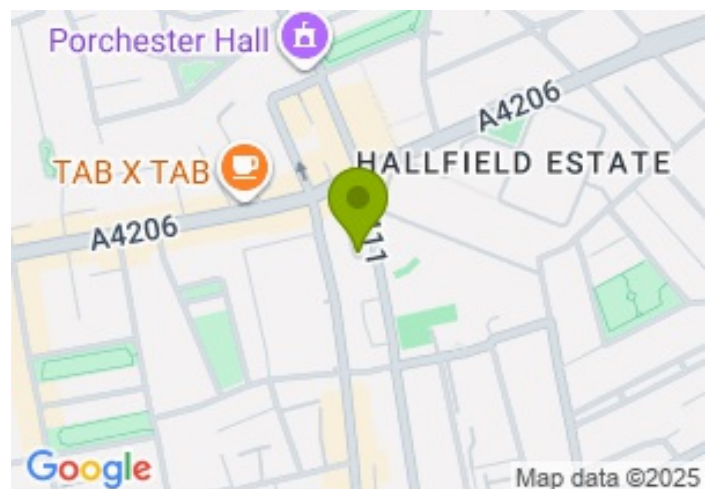
£1,999,000.00



FOR SALE



- Five-bedroom townhouse
- Secure parking space
- Three bathrooms and a guest WC
- Excellent location
- Short walk to Bayswater, Paddington and multiple other tube stations
- Front garden
- Generous layout with 1,867 sq. ft of living space
- Investment opportunity



Property Description

We are delighted to introduce this spacious five-bedroom townhouse, set in one of Bayswater's most sought-after areas. Offering over 1,860 sq. ft. of living space across three floors, this elegant home combines generous proportions with a prime location, just a short walk from Hyde Park.

The house is set back from the tree-lined road and framed by a neat front garden. Stepping inside, the welcoming entrance hall opens into a stylish, fully fitted kitchen complete with integrated appliances, which flows into a bright breakfast and dining area. A separate reception room provides an ideal space for both relaxation and entertaining guests.

The first floor hosts the principal bedroom, which benefits from an en-suite bathroom and a second large double bedroom. The top floor provides three additional double bedrooms. Two family bathrooms and a separate WC serve the home, ensuring convenience for a busy household. Large double-glazed windows ensure great energy efficiency while allowing natural light to fill the units. Ample storage solutions are thoughtfully integrated throughout the home, including a utility room and multiple built-in storage spaces. To the rear, the property enjoys the rare advantage of a private, covered parking space.

Perfectly positioned, residents are within walking distance of the open green spaces of Hyde Park as well as the vibrant cafés, restaurants, and boutiques of Westbourne Grove and Notting Hill. Excellent transport links are available, with Queensway (Central Line), Bayswater (District & Circle Lines), and Paddington Station with National Rail and Heathrow Express services— all within ten minutes.

Offered with no chain, this lovely house presents a fantastic opportunity for end users and investors alike. Contact us today to arrange a viewing!

Length of lease: approximately 956 years remaining

The property is currently tenanted (break clause in place). Please, contact us for further information.

All data and information set forth on this website regarding real property, for sale, purchase, rental and/or financing, are from sources regarded as reliable. No warranties are made as to the accuracy of any descriptions and/or other details and such information is subject to errors, omissions, changes of price, tenancies, commissions, prior sales, leases or financing, or withdrawal without notice. Square footage are approximate and may be verified by consulting a professional architect or engineer.

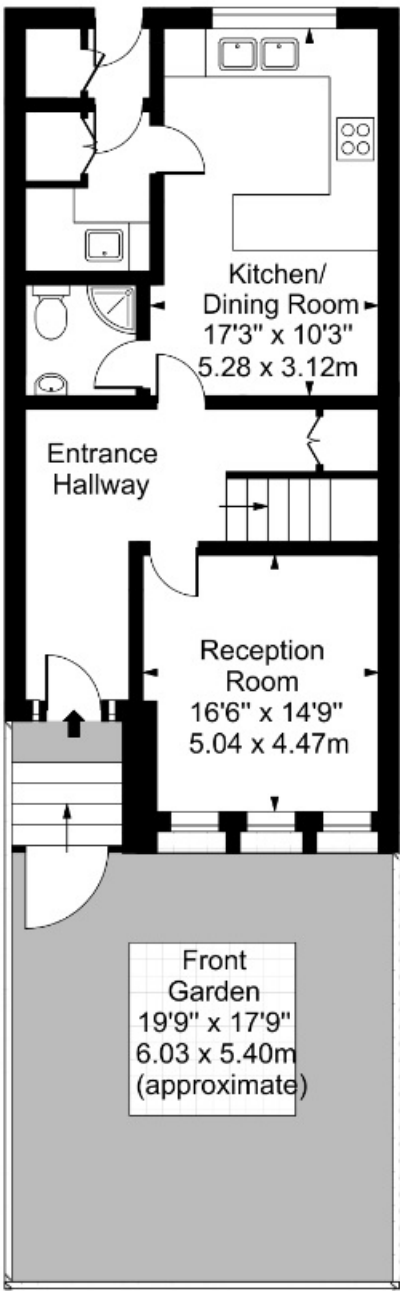
Viewing

Please contact our Global House Estates Ltd Office on 0207 401 2020 if you wish to arrange a viewing appointment for this property or require further information.

Disclaimer

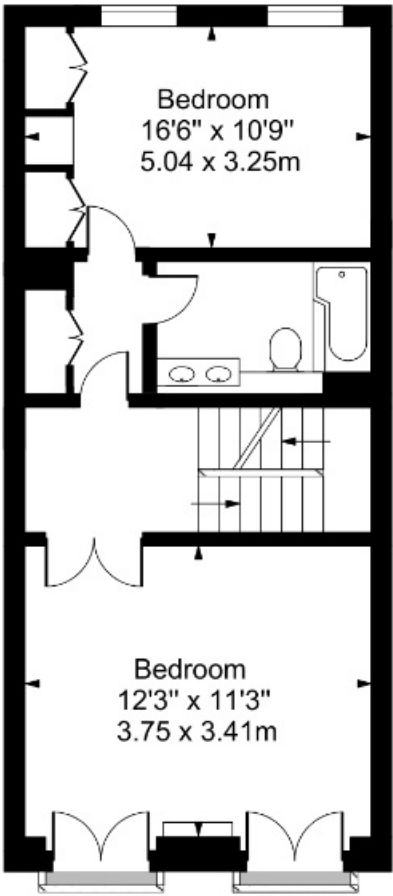
This website provides information about buying, selling, renting UK property. The information is from reliable sources, but we can't guarantee that it's always accurate. There may be mistakes or changes in the information, such as price, availability, leases, or financing. The square footage is also an estimate and should be confirmed by a professional architect or engineer.

Floor plan

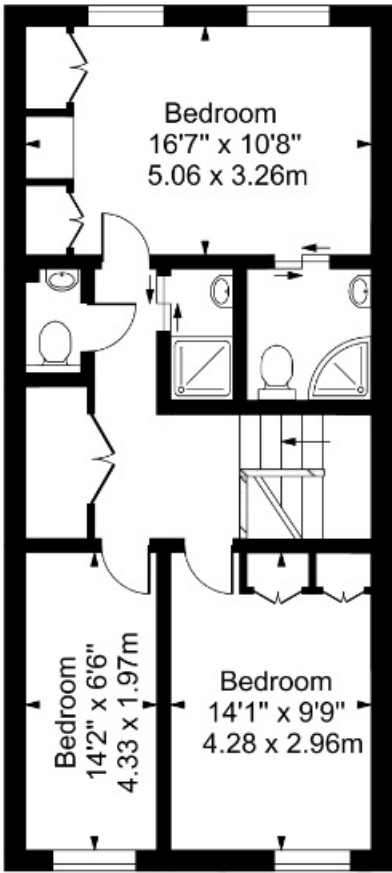


Ground Floor

Inverness Terrace, Bayswater, W2



FirstFloor



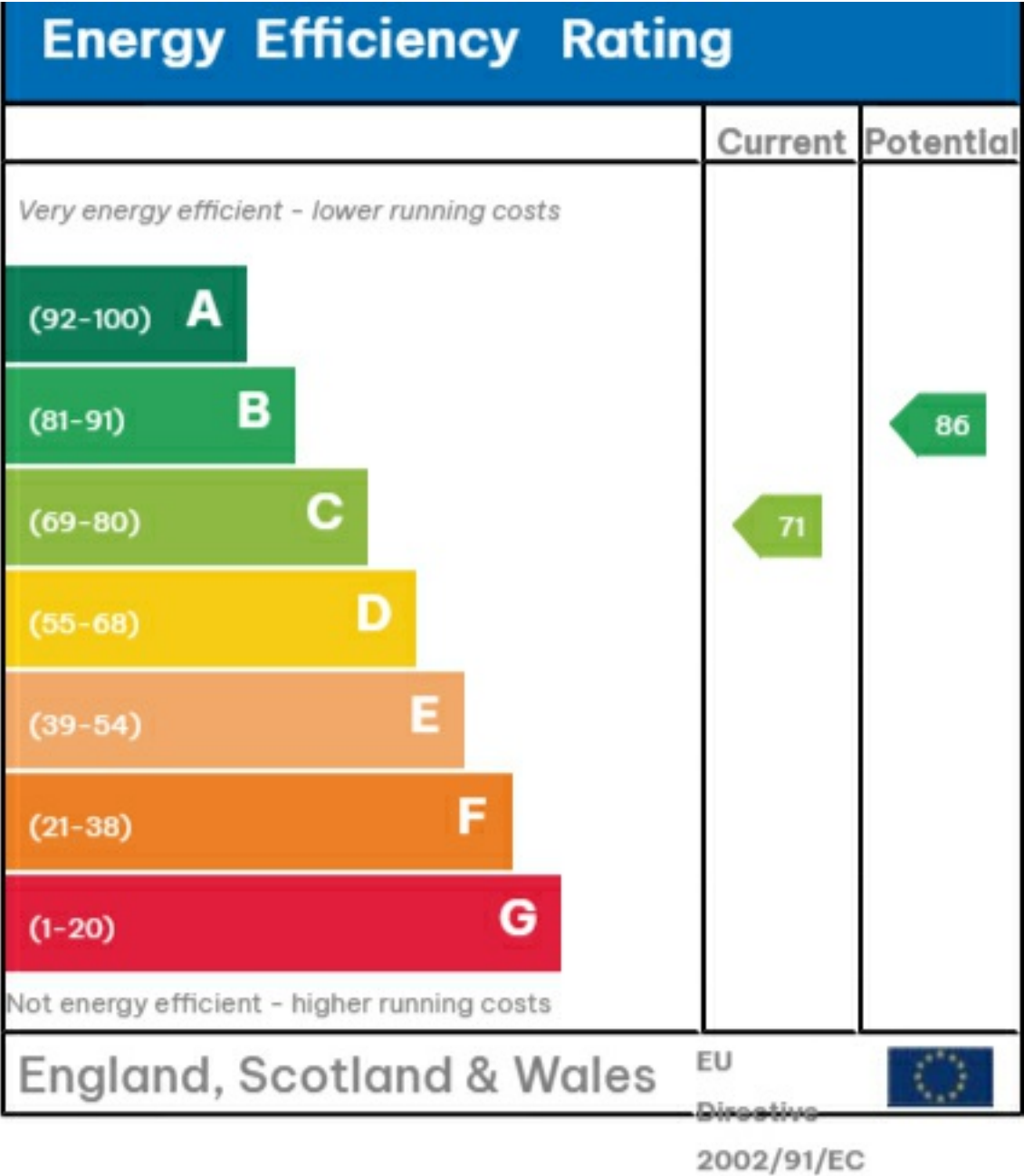
Second Floor

Approx Gross Internal Area 1867 Sq Ft -173.47 Sq M

For Illustration Purposes Only - Not To Scale Floor Plan by www.nogaphotostudio.com Ref: No.34315

This floor plan should be used as a general outline for guidance only. Any intending purchaser or lessee should satisfy themselves by inspection, searches, enquiries and full survey as to the correctness of each statement. Any areas, measurements or distances quoted are approximate and should not be used to value a property or be the basis of any sale or let.











35a St Georges Road, London,
SE1 6EW
+44 (0) 207 401 2020

<https://globalhouseestates.com>

Level 24, Lee Garden One,
33 Hysan Ave, Causeway Bay,
Hong Kong
+852 3963 8411