

BURNS ROAD, BATTERSEA, LONDON

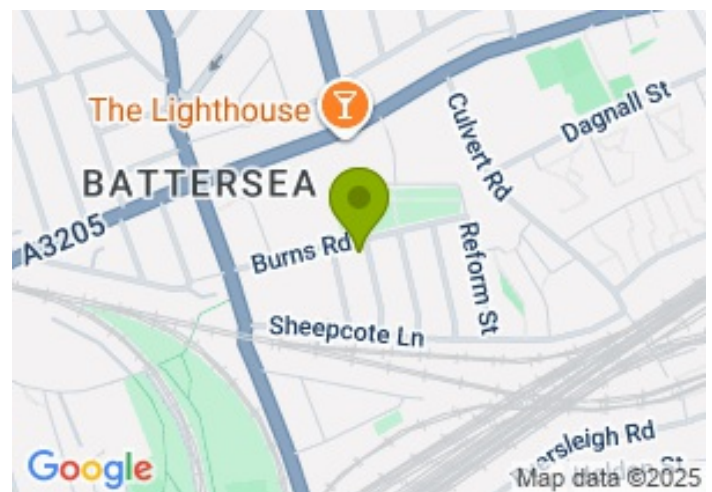
£576.92



FOR LET



- Two double bedrooms
- Private garden
- Separate reception



Property Description

Beautifully presented, this spacious ground-floor home offers two generous double bedrooms and is set within the sought-after Latchmere Conservation Area. Finished to an excellent standard throughout, the property features a stylish fully fitted kitchen, a contemporary shower room, a bright and inviting reception room, and the added benefit of a private garden—perfect for relaxing or entertaining.

Ideally located, you'll be just moments from the vibrant shops, bars, and restaurants of Battersea Park Road, as well as the wide-open green spaces of Battersea Park. Excellent transport links are also within easy reach, with Clapham Junction and Battersea Park stations nearby, making this a superb choice for both convenience and lifestyle.

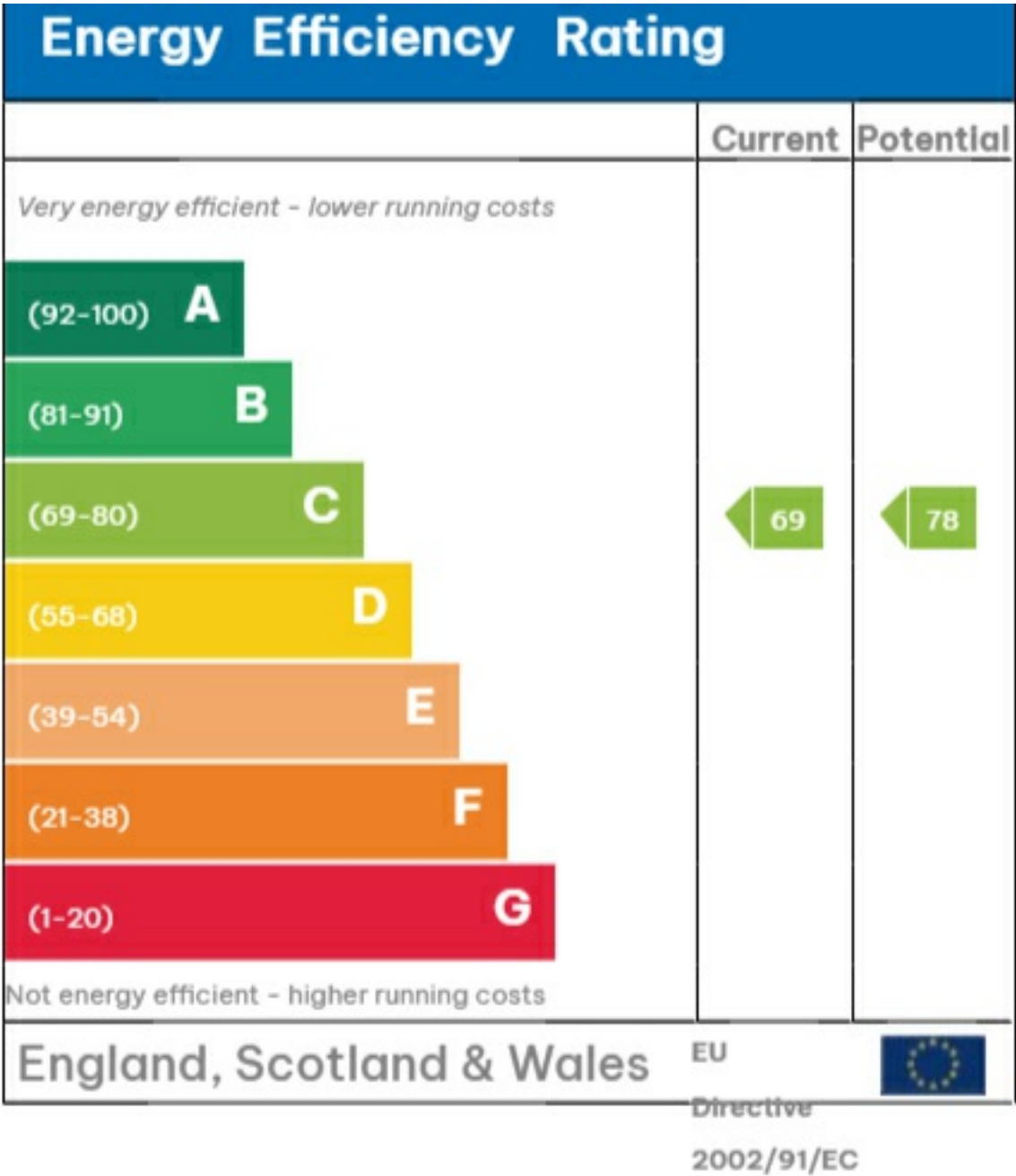
Viewing

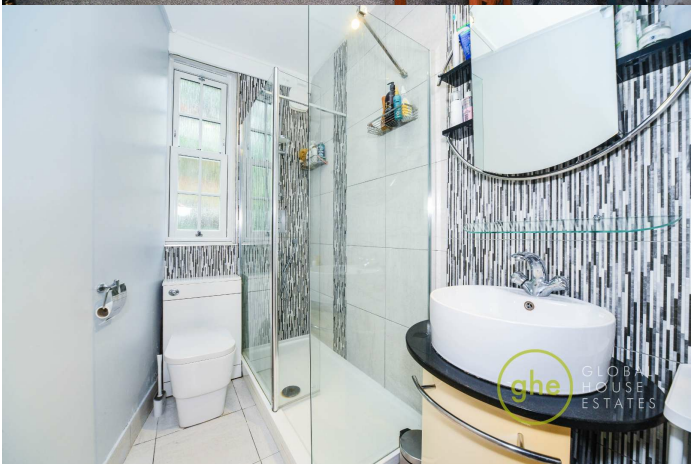
Please contact our Global House Estates Ltd Office on 0207 401 2020 if you wish to arrange a viewing appointment for this property or require further information.

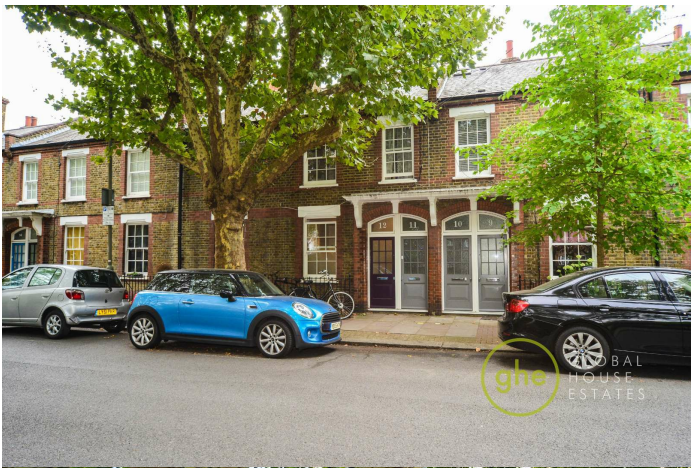
Disclaimer

This website provides information about buying, selling, renting UK property. The information is from reliable sources, but we can't guarantee that it's always accurate. There may be mistakes or changes in the information, such as price, availability, leases, or financing. The square footage is also an estimate and should be confirmed by a professional architect or engineer.

EPC







35a St Georges Road, London,
SE1 6EW
+44 (0) 207 401 2020

<https://globalhouseestates.com>

Level 24, Lee Garden One,
33 Hysan Ave, Causeway Bay,
Hong Kong
+852 3963 8411