

0247 401 2020 | enquiries@globalhouseestates.com

130 WEBBER STREET, WATERLOO, LONDON

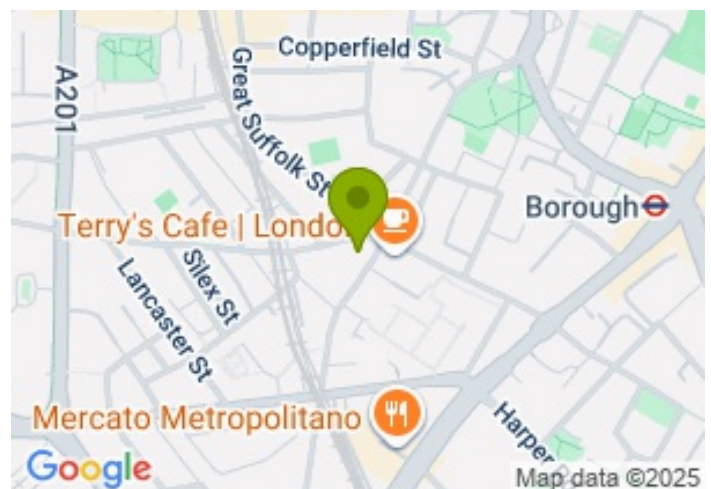
£775.00



FOR LET



- Two terraces
- Panoramic views of London's skyline
- Two bedrooms
- Two bathrooms
- Moments from Waterloo and Borough stations



Property Description

Global House Estates are please to offer this impressive penthouse apartment located on the 7th floor of this contemporary building located between Waterloo and Borough. The property offers two terraces with panoramic views across London of the London Eye and London's other iconic buildings. Comprising two double bedrooms, both of which have direct access to one of the terraces, together with the main bedroom benefiting from an en-suite shower room. The open plan reception and kitchen is bright and spacious and lead directly out to the main roof terrace offering a fantastic entertaining area.

The closest Undergrounds are Borough and Southwark which have direct access to the City and West End with Waterloo station serving various destinations in the South and South West of the UK.

Viewing

Please contact our Global House Estates Ltd Office on 0207 401 2020 if you wish to arrange a viewing appointment for this property or require further information.

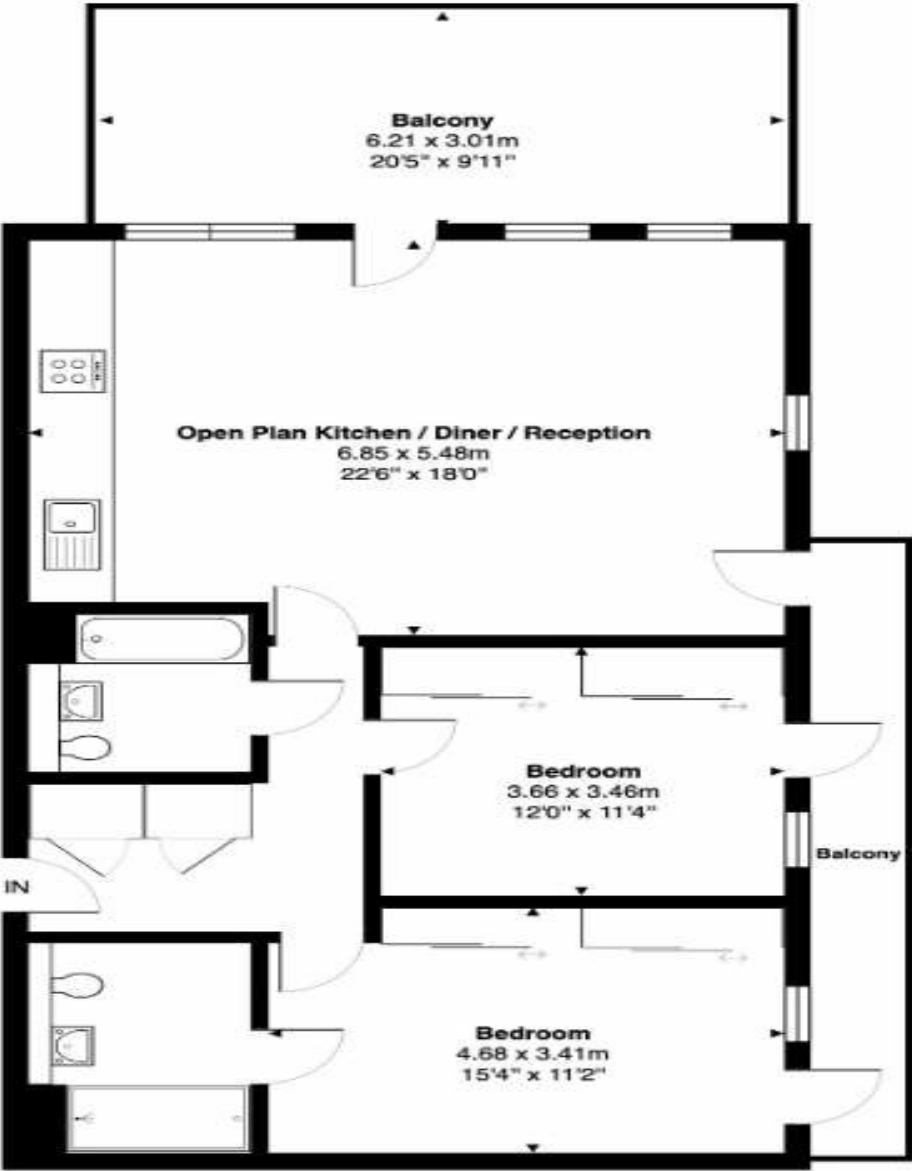
Disclaimer

This website provides information about buying, selling, renting UK property. The information is from reliable sources, but we can't guarantee that it's always accurate. There may be mistakes or changes in the information, such as price, availability, leases, or financing. The square footage is also an estimate and should be confirmed by a professional architect or engineer.

Floor plan

130 Webber Street, SE1

Total Area: 83.6 m² ... 899 ft² (excluding balcony)



Seventh Floor



This Floorplan is provided without warranty, of any kind.
Bespoke Plans disclaims any warranty including,
without limitation, satisfaction, quality or accuracy of any dimensions





35a St Georges Road, London,
SE1 6EW
+44 (0) 207 401 2020

<https://globalhouseestates.com>

Level 24, Lee Garden One,
33 Hysan Ave, Causeway Bay,
Hong Kong
+852 3963 8411